

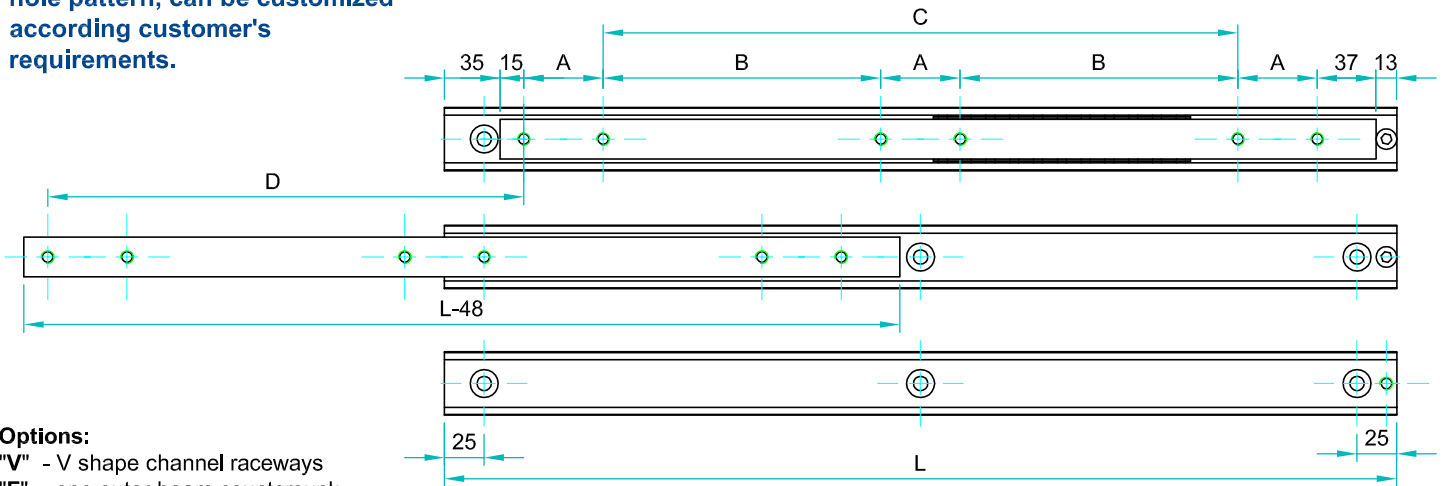
FEDS

TELESCOPIC SLIDES AND LINEAR RAILS

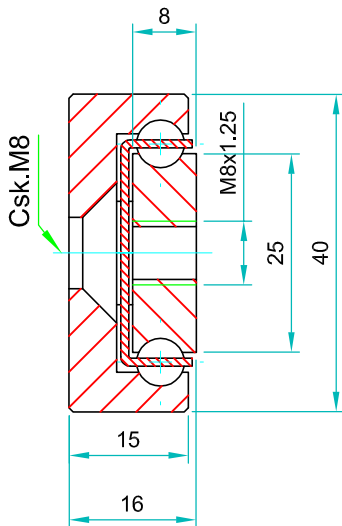
Partial extension

Slide type: **SOWS**

Note: The slide opening and the hole pattern, can be customized according customer's requirements.



Options:
 "V" - V shape channel raceways
 "F" - one outer beam countersunk



We recommend use the major axis.
 Do not dismantle the slide !
 The maximum safe load is given for a fully extended pair of slides, mounted on the major axis with a load spread uniformly along the inner beam. Flat mounted slide load capacities are reduced between 60-80%

Type: SOWS-40				Hole pattern		
Article number	Instalacion lenght: L	Extension lenght :D	Load per pair :kg	"A"	"B"	"C"
SOWS4016.0200	200	100	220	50	-	-
SOWS4016.0250	250	125	230	50	-	50
SOWS4016.0300	300	150	240	50	-	100
SOWS4016.0350	350	175	250	50	-	150
SOWS4016.0400	400	200	260	50	-	200
SOWS4016.0450	450	225	270	50	-	250
SOWS4016.0500	500	250	280	50	-	300
SOWS4016.0550	550	275	270	50	150	-
SOWS4016.0600	600	300	260	50	175	-
SOWS4016.0650	650	325	250	50	200	-
SOWS4016.0700	700	350	240	50	225	-
SOWS4016.0750	750	375	225	50	250	-
SOWS4016.0800	800	400	200	50	275	-
SOWS4016.0850	850	425	185	50	300	-
SOWS4016.0900	900	450	170	50	325	-
SOWS4016.0950	950	475	155	50	350	-
SOWS4016.1000	1000	500	140	50	375	-
SOWS4016.1050	1050	525	130	50	400	-
SOWS4016.1100	1100	550	120	50	425	-
SOWS4016.1150	1150	575	110	50	450	-
SOWS4016.1200	1200	600	100	50	475	-
SOWS4016.1250	1250	625	90	50	500	-
SOWS4016.1300	1300	650	80	50	525	-
SOWS4016.1350	1350	675	70	50	550	-
SOWS4016.1400	1400	700	60	50	575	-
SOWS4016.1450	1450	725	50	50	600	-
SOWS4016.1500	1500	750	40	50	625	-
SOWS4016.1550	1550	775	30	50	650	-
SOWS4016.1600	1600	800	20	50	675	-

Material: All stainless steel parts

Beams: 316 L, milled raceways

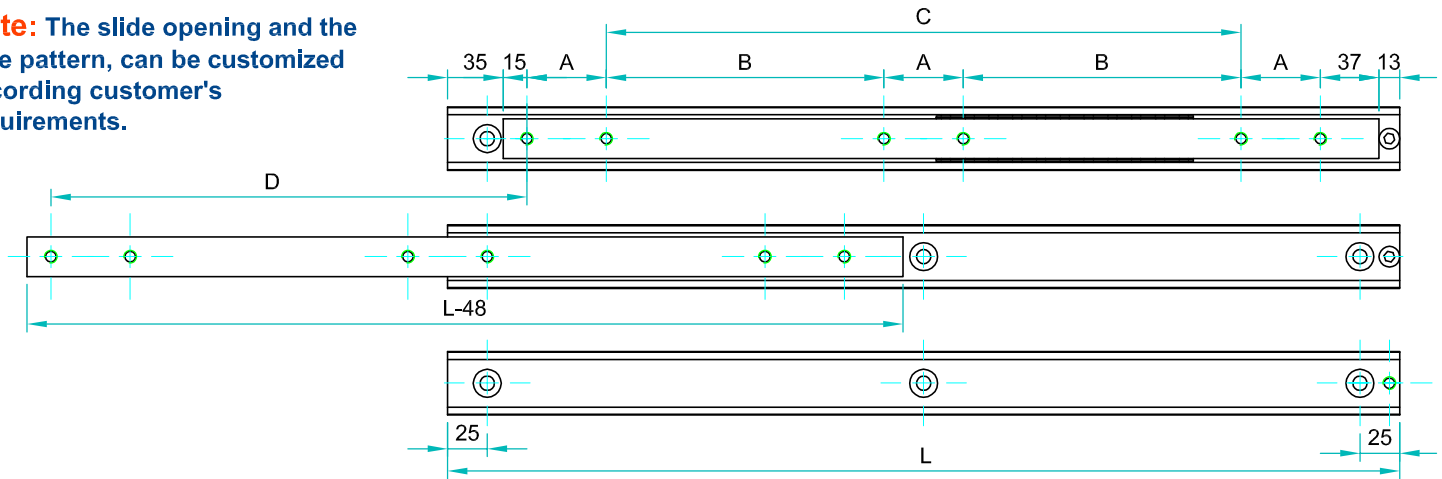
Ball cages: 304 stainless sheet steel .

Ball bearings: 316 L

End Bolts: A2

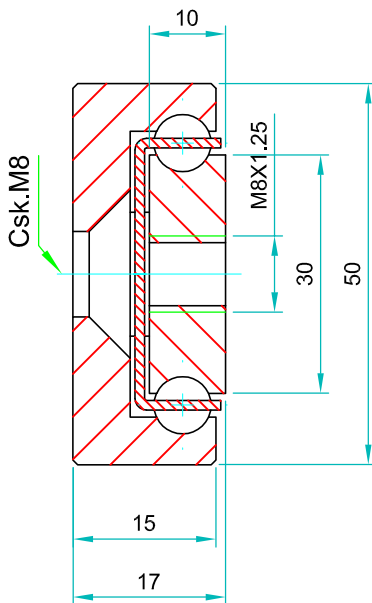
Maximum temperature: We recommend -40 to +200°C with low/high-temp lubrication and free movement to allow for steel expansion.

Note: The slide opening and the hole pattern, can be customized according customer's requirements.



Options:

- "V" - V shape channel raceways
- "F" - one outer beam countersunk



Type:SOWS-50				Hole pattern		
Article number	Instalacion lenght: L	Extension lenght: D	Load per pair: kg	"A"	"B"	"C"
SOWS1517.0200	200	100	330	50	-	-
SOWS1517.0250	250	125	340	50	-	50
SOWS1517.0300	300	150	350	50	-	100
SOWS1517.0350	350	175	360	50	-	150
SOWS1517.0400	400	200	370	50	-	200
SOWS1517.0450	450	225	380	50	-	250
SOWS1517.0500	500	250	390	50	-	300
SOWS1517.0550	550	275	400	50	150	-
SOWS1517.0600	600	300	380	50	175	-
SOWS1517.0650	650	325	360	50	200	-
SOWS1517.0700	700	350	340	50	225	-
SOWS1517.0750	750	375	320	50	250	-
SOWS1517.0800	800	400	310	50	275	-
SOWS1517.0850	850	425	290	50	300	-
SOWS1517.0900	900	450	290	50	325	-
SOWS1517.0950	950	475	280	50	350	-
SOWS1517.1000	1000	500	270	50	375	-
SOWS1517.1050	1050	525	260	50	400	-
SOWS1517.1100	1100	550	250	50	425	-
SOWS1517.1150	1150	575	240	50	450	-
SOWS1517.1200	1200	600	230	50	475	-
SOWS1517.1250	1250	625	215	50	500	-
SOWS1517.1300	1300	650	200	50	525	-
SOWS1517.1350	1350	675	190	50	550	-
SOWS1517.1400	1400	700	180	50	575	-
SOWS1517.1450	1450	725	170	50	600	-
SOWS1517.1500	1500	750	160	50	625	-
SOWS1517.1550	1550	775	150	50	650	-
SOWS1517.1600	1600	800	140	50	675	-
SOWS1517.1250	1650	825	130	50	500	-
SOWS1517.1300	1700	850	120	100	650	-
SOWS1517.1350	1750	875	110	100	675	-
SOWS1517.1400	1800	900	100	100	700	-
SOWS1517.1450	1850	925	90	100	725	-
SOWS1517.1500	1900	950	80	100	750	-
SOWS1517.1550	1950	975	80	100	775	-
SOWS1517.1600	2000	1000	70	100	800	-



We recommend use the major axis.
Do not dismantle the slide !
The maximum safe load is given for a fully extended pair of slides, mounted on the major axis with a load spread uniformly along the inner beam
Flat mounted slide load capacities are reduced between 60-80%

Material: All stainless steel parts

Beams: 316 L, milled raceways

Ball cages: 304 stainless sheet steel .

Ball bearings: 316 L

End Bolts: A2

Maximum temperature: We recommend -40 to +200°C with low/high-temp lubrication and free movement to allow for steel expansion.