

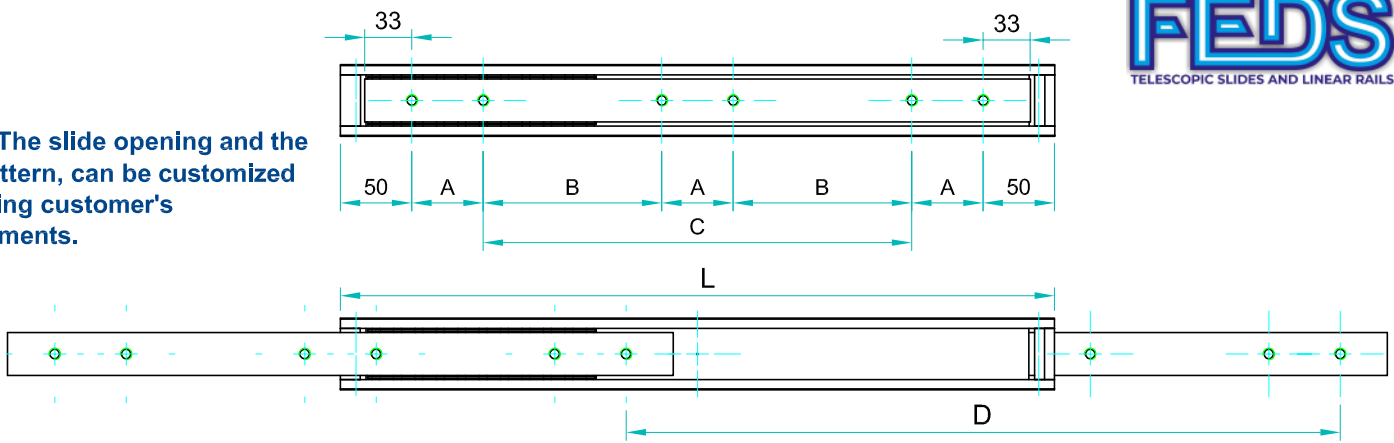
FEDS

TELESCOPIC SLIDES AND LINEAR RAILS

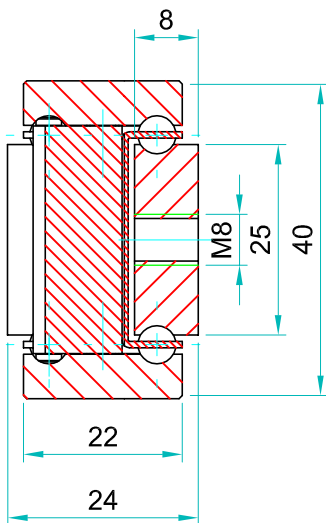
Bi directional

Slide type: **DTSB**
TSRT

Note: The slide opening and the hole pattern, can be customized according customer's requirements.



- Options:**
 "V" - V shape channel raceways
 "F" - one outer beam countersunk
 "FF"- both outer beams countersunk
 "SB"- stainless steel ball bearings
 "SC"- stainless steel ball cages
 "SA"- stainless steel stopping pins and bolts



We recommend use the major axis.
 Do not dismantl the slide !
 The maximum safe load is given for a fully extended pair of slides, mounted on the major axis with a load spread uniformly along the inner beam. Flat mounted slide load capacities are reduced between 60-80%

Type: DTSB-40				Hole pattern		
Article number	Instalacion lenght:L	Extension lenght:D	Load per pair: kg	"A"	"B"	"C"
DTSB4024.0200	200	200	270	50	-	-
DTSB4024.0250	250	250	280	50	-	50
DTSB4024.0300	300	300	290	50	-	100
DTSB4024.0350	350	350	300	50	-	150
DTSB4024.0400	400	400	310	50	-	200
DTSB4024.0450	450	450	320	50	-	250
DTSB4024.0500	500	500	330	50	-	300
DTSB4024.0550	550	550	350	50	150	-
DTSB4024.0600	600	600	340	50	175	-
DTSB4024.0650	650	650	320	50	200	-
DTSB4024.0700	700	700	300	50	225	-
DTSB4024.0750	750	750	290	50	250	-
DTSB4024.0800	800	800	280	50	275	-
DTSB4024.0850	850	850	270	50	300	-
DTSB4024.0900	900	900	250	50	325	-
DTSB4024.0950	950	950	230	50	350	-
DTSB4024.1000	1000	1000	220	50	375	-
DTSB4024.1050	1050	1050	210	50	400	-
DTSB4024.1100	1100	1100	200	50	425	-
DTSB4024.1150	1150	1150	190	50	450	-
DTSB4024.1200	1200	1200	180	50	475	-
DTSB4024.1250	1250	1250	170	50	500	-
DTSB4024.1300	1300	1300	160	50	525	-
DTSB4024.1350	1350	1350	155	50	550	-
DTSB4024.1400	1400	1400	150	50	575	-
DTSB4024.1450	1450	1450	145	50	600	-
DTSB4024.1500	1500	1500	140	50	625	-
DTSB4024.1550	1550	1550	130	50	650	-
DTSB4024.1600	1600	1600	120	50	675	-
DTSB4024.1650	1650	1650	110	50	700	-
DTSB4024.1700	1700	1700	100	100	650	-
DTSB4024.1750	1750	1750	90	100	675	-
DTSB4024.1800	1800	1800	80	100	700	-
DTSB4024.1850	1850	1850	70	100	725	-
DTSB4024.1900	1900	1900	60	100	750	-
DTSB4024.1950	1950	1950	50	100	775	-
DTSB4024.2000	2000	2000	40	100	800	-

Material:All steel parts.

Beams:Cold drawn carbon steel C45E+C, - EN 10277, milled raceways.

Ball cages:Zinc plated sheet steel.

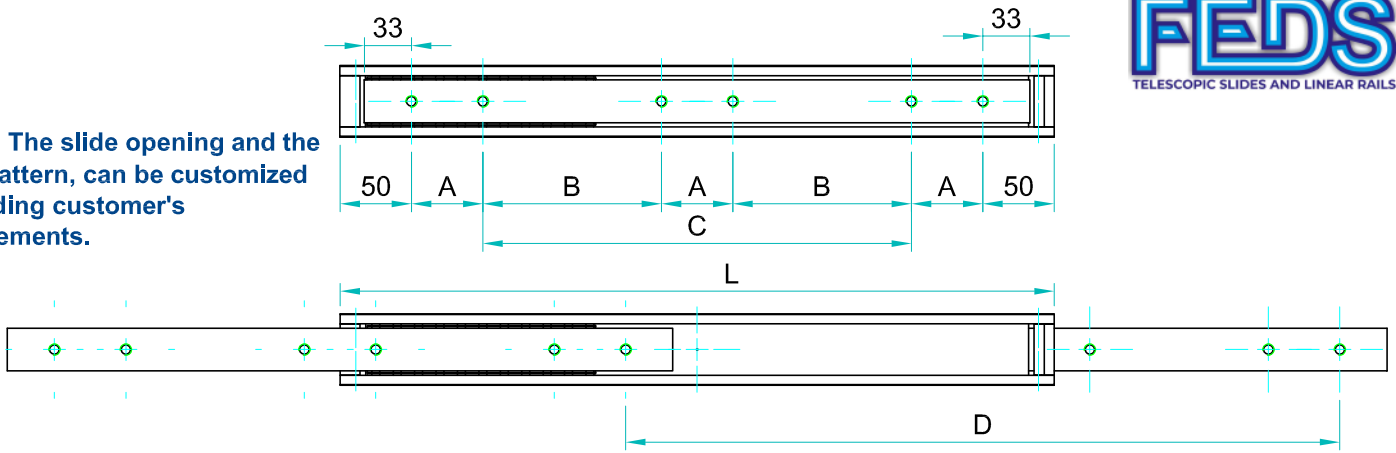
Ball bearings:Chromed C85,G100: DIN 5401.

End Bolts: ASTM A307.

Steel surface protection:Electrolytic alkaline Zinc coating 8-12 microns testet in salt chamber 900 hours without white rast.

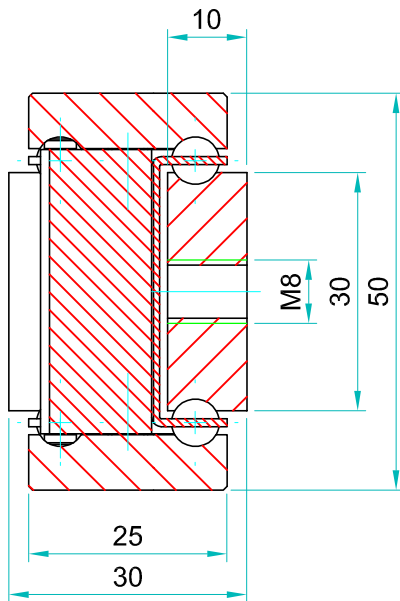
Maximum temperature:We recommend -40 to +200°C with low/high-temp lubrication and free movement to allow for steel expansion.

Note: The slide opening and the hole pattern, can be customized according customer's requirements.



Options:

- "V" - V shape channel raceways
- "F" - one outer beam countersunk
- "FF"- both outer beams countersunk
- "SB"- stainless steel ball bearings
- "SC"- stainless steel ball cages
- "SA"- stainless steel stopping pins and bolts



We recommend use the major axis.
Do not dismantle the slide !
The maximum safe load is given for a fully extended pair of slides, mounted on the major axis with a load spread uniformly along the inner beam. Flat mounted slide load capacities are reduced between 60-80%

Type: DTSB-50				Hole pattern		
Article number	Instalacion lenght:L	Extension lenght:D	Load per pair: kg	"A"	"B"	"C"
DTSB5030.0200	200	200	340	50	-	-
DTSB5030.0250	250	250	350	50	-	50
DTSB5030.0300	300	300	360	50	-	100
DTSB5030.0350	350	350	370	50	-	150
DTSB5030.0400	400	400	380	50	-	200
DTSB5030.0450	450	450	390	50	-	250
DTSB5030.0500	500	500	400	50	-	300
DTSB5030.0550	550	550	410	50	150	-
DTSB5030.0600	600	600	420	50	175	-
DTSB5030.0650	650	650	410	50	200	-
DTSB5030.0700	700	700	400	50	225	-
DTSB5030.0750	750	750	390	50	250	-
DTSB5030.0800	800	800	380	50	275	-
DTSB5030.0850	850	850	370	50	300	-
DTSB5030.0900	900	900	360	50	325	-
DTSB5030.0950	950	950	350	50	350	-
DTSB5030.1000	1000	1000	340	50	375	-
DTSB5030.1050	1050	1050	330	50	400	-
DTSB5030.1100	1100	1100	320	50	425	-
DTSB5030.1150	1150	1150	310	50	450	-
DTSB5030.1200	1200	1200	290	50	475	-
DTSB5030.1250	1250	1250	280	50	500	-
DTSB5030.1300	1300	1300	270	50	525	-
DTSB5030.1350	1350	1350	260	50	550	-
DTSB5030.1400	1400	1400	250	50	575	-
DTSB5030.1450	1450	1450	230	50	600	-
DTSB5030.1500	1500	1500	200	50	625	-
DTSB5030.1550	1550	1550	190	50	650	-
DTSB5030.1600	1600	1600	180	50	675	-
DTSB5030.1650	1650	1650	170	50	700	-
DTSB5030.1700	1700	1700	160	100	650	-
DTSB5030.1750	1750	1750	150	100	675	-
DTSB5030.1800	1800	1800	140	100	700	-
DTSB5030.1850	1850	1850	130	100	725	-
DTSB5030.1900	1900	1900	120	100	750	-
DTSB5030.1950	1950	1950	110	100	775	-
DTSB5030.2000	2000	2000	100	100	800	-

Material:All steel parts.

Beams:Cold drawn carbon steel C45E+C, - EN 10277, milled raceways.

Ball cages:Zinc plated sheet steel.

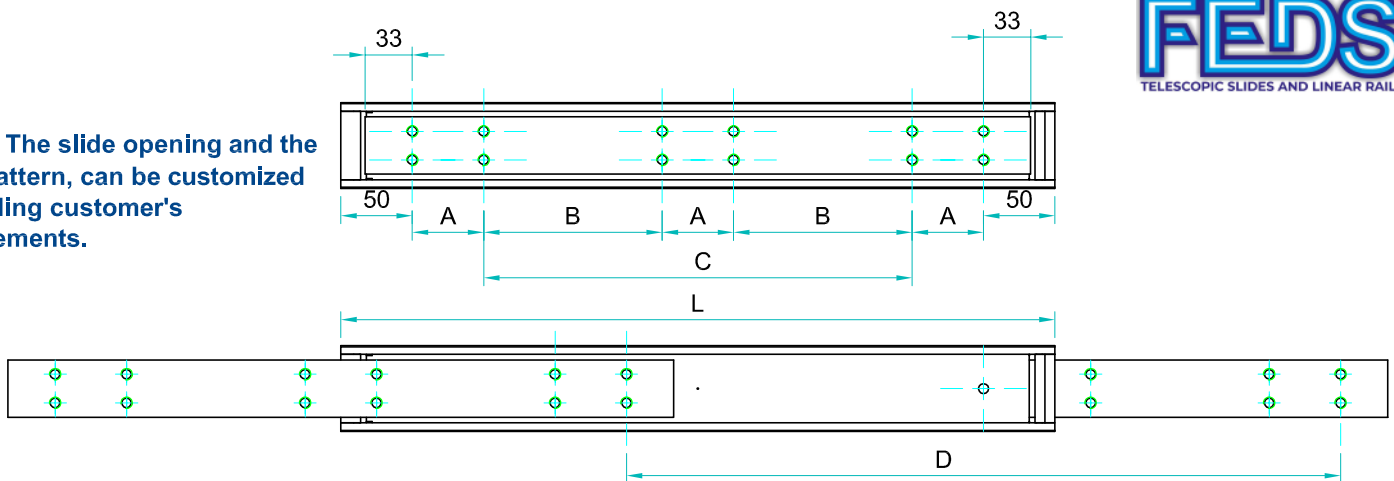
Ball bearings:Chromed C85,G100: DIN 5401.

End Bolts: ASTM A307.

Steel surface protection:Electrolytic alkaline Zinc coating 8-12 microns testet in salt chamber 900 hours without white rast.

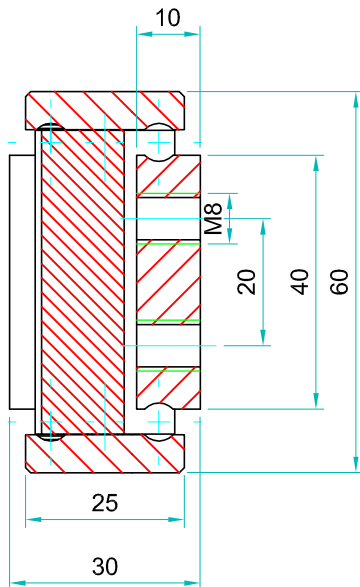
Maximum temperature:We recommend -40 to +200°C with low/high-temp lubrication and free movement to allow for steel expansion.

Note: The slide opening and the hole pattern, can be customized according customer's requirements.



Options:

- "V" - V shape channel raceways
- "F" - one outer beam countersunk
- "FF" - both outer beams countersunk
- "SB" - stainless steel ball bearings
- "SC" - stainless steel ball cages
- "SA" - stainless steel stopping pins and bolts



We recommend use the major axis.
Do not dismantle the slide !
The maximum safe load is given for a fully extended pair of slides, mounted on the major axis with a load spread uniformly along the inner beam. Flat mounted slide load capacities are reduced between 60-80%

Type:DTSB-60				Hole pattern		
Article number	Instalacion lenght:L	Extension lenght:D	Load per pair: kg	"A"	"B"	"C"
DTSB6030.0200	200	200	450	50	-	-
DTSB6030.0250	250	250	470	50	-	50
DTSB6030.0300	300	300	480	50	-	100
DTSB6030.0350	350	350	490	50	-	150
DTSB6030.0400	400	400	500	50	-	200
DTSB6030.0450	450	450	520	50	-	250
DTSB6030.0500	500	500	530	50	-	300
DTSB6030.0550	550	550	550	50	-	350
DTSB6030.0600	600	600	560	50	-	400
DTSB6030.0650	650	650	570	50	200	-
DTSB6030.0700	700	700	580	50	225	-
DTSB6030.0750	750	750	590	50	250	-
DTSB6030.0800	800	800	600	50	275	-
DTSB6030.0850	850	850	590	50	300	-
DTSB6030.0900	900	900	580	50	325	-
DTSB6030.0950	950	950	570	50	350	-
DTSB6030.1000	1000	1000	560	50	375	-
DTSB6030.1050	1050	1050	540	50	400	-
DTSB6030.1100	1100	1100	520	50	425	-
DTSB6030.1150	1150	1150	510	50	450	-
DTSB6030.1200	1200	1200	500	50	475	-
DTSB6030.1250	1250	1250	480	50	500	-
DTSB6030.1300	1300	1300	460	50	525	-
DTSB6030.1350	1350	1350	440	50	550	-
DTSB6030.1400	1400	1400	420	50	575	-
DTSB6030.1450	1450	1450	400	50	600	-
DTSB6030.1500	1500	1500	380	50	625	-
DTSB6030.1550	1550	1550	350	50	650	-
DTSB6030.1600	1600	1600	330	50	675	-
DTSB6030.1650	1650	1650	310	50	700	-
DTSB6030.1700	1700	1700	290	100	650	-
DTSB6030.1750	1750	1750	280	100	675	-
DTSB6030.1800	1800	1800	260	100	700	-
DTSB6030.1850	1850	1850	240	100	725	-
DTSB6030.1900	1900	1900	220	100	750	-
DTSB6030.1950	1950	1950	200	100	775	-
DTSB6030.2000	2000	2000	180	100	800	-

Material:All steel parts.

Beams:Cold drawn carbon steel C45E+C, - EN 10277, milled raceways.

Ball cages:Zinc plated sheet steel.

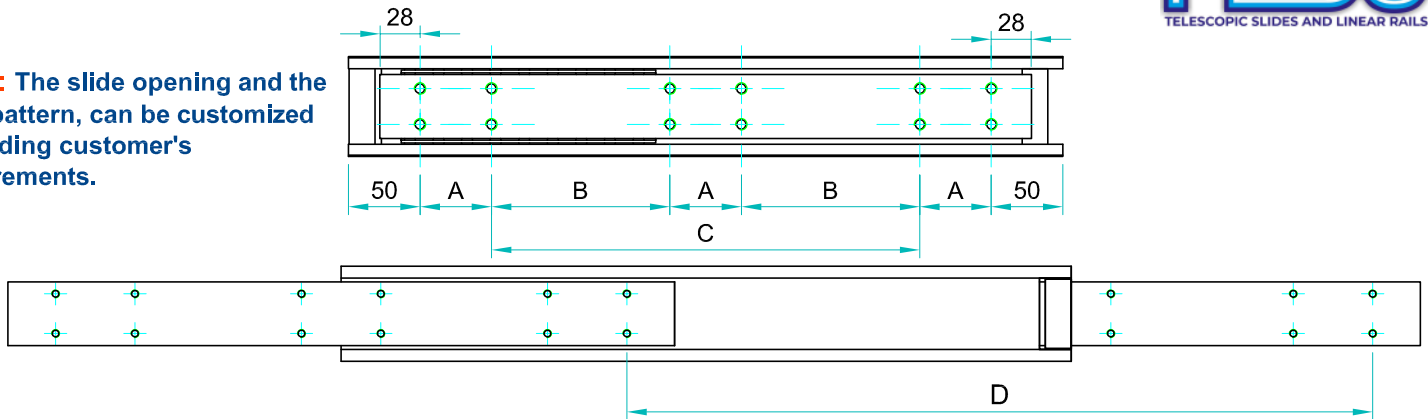
Ball bearings:Chromed C85,G100: DIN 5401.

End Bolts: ASTM A307.

Steel surface protection:Electrolytic alkaline Zinc coating 8-12 microns testet in salt chamber 900 hours without white rast.

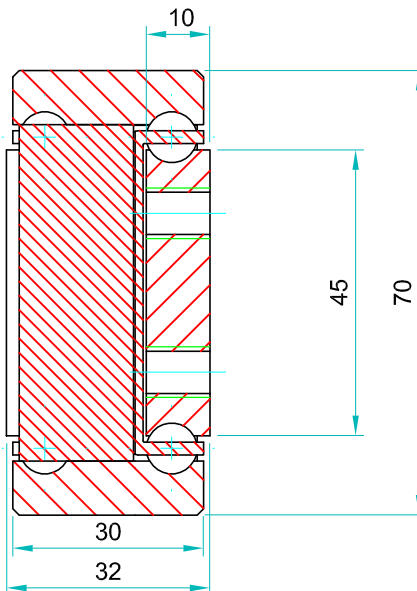
Maximum temperature:We recommend -40 to +200°C with low/high-temp lubrication and free movement to allow for steel expansion.

Note: The slide opening and the hole pattern, can be customized according customer's requirements.



Options:

- "V" - V shape channel raceways
- "F" - one outer beam countersunk
- "FF"- both outer beams countersunk
- "SB"- stainless steel ball bearings
- "SC"- stainless steel ball cages
- "SA"- stainless steel stopping pins and bolts



We recommend use the major axis.
Do not dismantle the slide !
The maximum safe load is given for a fully extended pair of slides, mounted on the major axis with a load spread uniformly along the inner beam. Flat mounted slide load capacities are reduced between 60-80%

Type:DTSB-70				Hole pattern		
Article number	Instalacion lenght:L	Extension lenght:D	Load per pair: kg	"A"	"B"	"C"
DTSB7032.0200	200	200	540	50	-	-
DTSB7032.0250	250	250	560	50	-	50
DTSB7032.0300	300	300	580	50	-	100
DTSB7032.0350	350	350	600	50	-	150
DTSB7032.0400	400	400	620	50	-	200
DTSB7032.0450	450	450	640	50	-	250
DTSB7032.0500	500	500	650	50	-	300
DTSB7032.0550	550	550	660	50	-	350
DTSB7032.0600	600	600	670	50	-	400
DTSB7032.0650	650	650	680	50	200	-
DTSB7032.0700	700	700	690	50	225	-
DTSB7032.0750	750	750	695	50	250	-
DTSB7032.0800	800	800	700	50	275	-
DTSB7032.0850	850	850	695	50	300	-
DTSB7032.0900	900	900	690	50	325	-
DTSB7032.0950	950	950	685	50	350	-
DTSB7032.1000	1000	1000	680	50	375	-
DTSB7032.1050	1050	1050	660	50	400	-
DTSB7032.1100	1100	1100	650	50	425	-
DTSB7032.1150	1150	1150	630	50	450	-
DTSB7032.1200	1200	1200	610	50	475	-
DTSB7032.1250	1250	1250	600	50	500	-
DTSB7032.1300	1300	1300	580	50	525	-
DTSB7032.1350	1350	1350	550	50	550	-
DTSB7032.1400	1400	1400	520	50	575	-
DTSB7032.1450	1450	1450	490	50	600	-
DTSB7032.1500	1500	1500	460	50	625	-
DTSB7032.1550	1550	1550	420	50	650	-
DTSB7032.1600	1600	1600	380	50	675	-
DTSB7032.1650	1650	1650	350	50	700	-
DTSB7032.1700	1700	1700	340	100	650	-
DTSB7032.1750	1750	1750	315	100	675	-
DTSB7032.1800	1800	1800	300	100	700	-
DTSB7032.1850	1850	1850	280	100	725	-
DTSB7032.1900	1900	1900	255	100	750	-
DTSB7032.1950	1950	1950	240	100	775	-
DTSB7032.2000	2000	2000	220	100	800	-

Material:All steel parts.

Beams:Cold drawn carbon steel C45E+C, - EN 10277, milled raceways.

Ball cages:Zinc plated sheet steel.

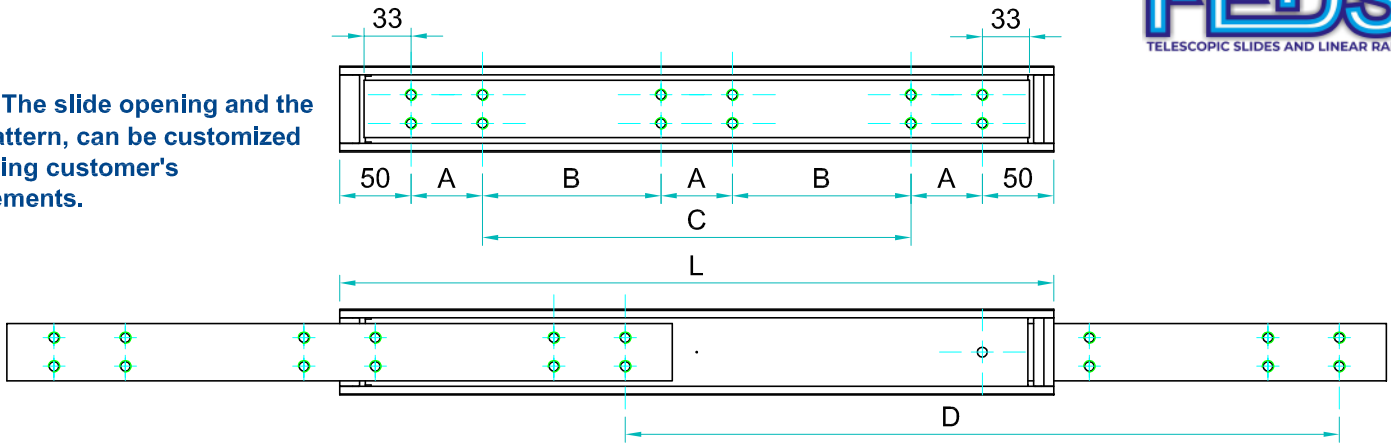
Ball bearings:Chromed C85,G100: DIN 5401.

End Bolts: ASTM A307.

Steel surface protection:Electrolytic alkaline Zinc coating 8-12 microns testet in salt chamber 900 hours without white rast.

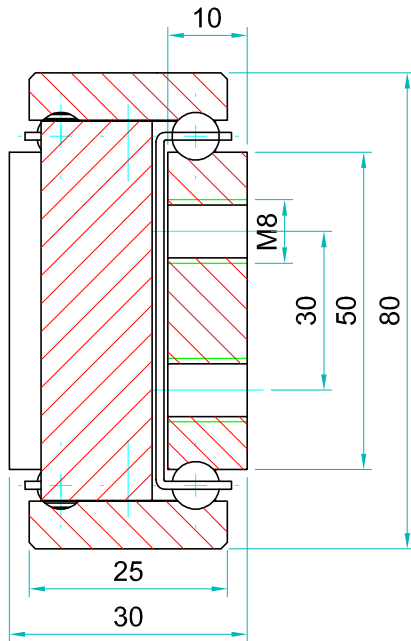
Maximum temperature:We recommend -40 to +200°C with low/high-temp lubrication and free movement to allow for steel expansion.

Note: The slide opening and the hole pattern, can be customized according customer's requirements.



Options:

- "V" - V shape channel raceways
- "F" - one outer beam countersunk
- "FF"- both outer beams countersunk
- "SB"- stainless steel ball bearings
- "SC"- stainless steel ball cages
- "SA"- stainless steel stopping pins and bolts



We recommend use the major axis.
Do not dismantle the slide !
The maximum safe load is given for a fully extended pair of slides, mounted on the major axis with a load spread uniformly along the inner beam. Flat mounted slide load capacities are reduced between 60-80%

Type:DTSB-80				Hole pattern		
Article number	Instalacion lenght:L	Extension lenght: D	Load per pair : kg	"A"	"B"	"C"
DTSB8030.0200	200	200	600	50	-	-
DTSB8030.0250	250	250	620	50	-	50
DTSB8030.0300	300	300	640	50	-	100
DTSB8030.0350	350	350	680	50	-	150
DTSB8030.0400	400	400	720	50	-	200
DTSB8030.0450	450	450	760	50	-	250
DTSB8030.0500	500	500	790	50	-	300
DTSB8030.0550	550	550	830	50	-	350
DTSB8030.0600	600	600	850	50	-	400
DTSB8030.0650	650	650	860	50	200	-
DTSB8030.0700	700	700	865	50	225	-
DTSB8030.0750	750	750	875	50	250	-
DTSB8030.0800	800	800	880	50	275	-
DTSB8030.0850	850	850	870	50	300	-
DTSB8030.0900	900	900	860	50	325	-
DTSB8030.0950	950	950	850	50	350	-
DTSB8030.1000	1000	1000	840	50	375	-
DTSB8030.1050	1050	1050	820	50	400	-
DTSB8030.1100	1100	1100	800	50	425	-
DTSB8030.1150	1150	1150	780	50	450	-
DTSB8030.1200	1200	1200	760	50	475	-
DTSB8030.1250	1250	1250	740	50	500	-
DTSB8030.1300	1300	1300	720	50	525	-
DTSB8030.1350	1350	1350	690	50	550	-
DTSB8030.1400	1400	1400	660	50	575	-
DTSB8030.1450	1450	1450	630	50	600	-
DTSB8030.1500	1500	1500	600	50	625	-
DTSB8030.1550	1550	1550	580	50	650	-
DTSB8030.1600	1600	1600	540	50	675	-
DTSB8030.1650	1650	1650	520	50	700	-
DTSB8030.1700	1700	1700	490	100	650	-
DTSB8030.1750	1750	1750	450	100	675	-
DTSB8030.1800	1800	1800	400	100	700	-
DTSB8030.1850	1850	1850	360	100	725	-
DTSB8030.1900	1900	1900	320	100	750	-
DTSB8030.1950	1950	1950	280	100	775	-
DTSB8030.2000	2000	2000	250	100	800	-

Material:All steel parts.

Beams:Cold drawn carbon steel C45E+C, - EN 10277, milled raceways.

Ball cages:Zinc plated sheet steel.

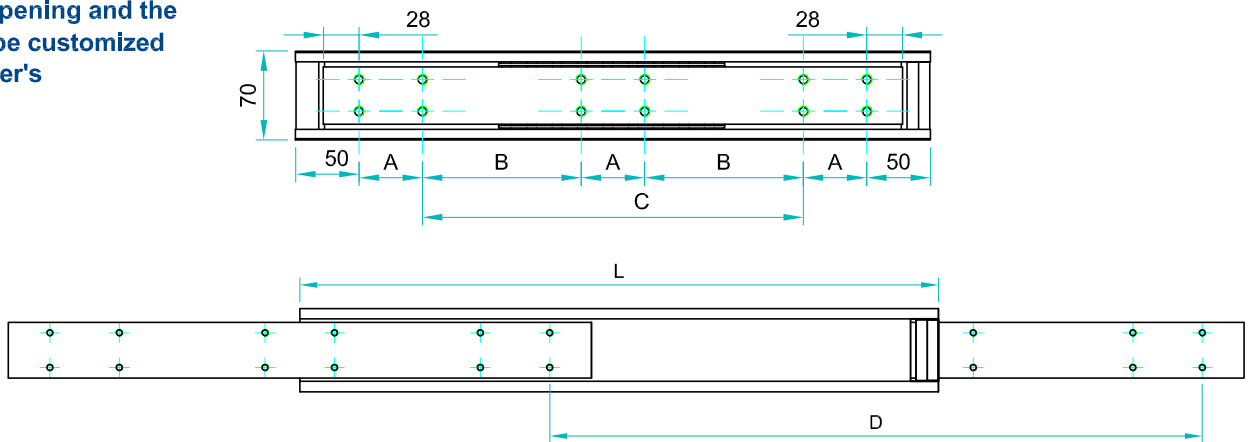
Ball bearings:Chromed C85,G100: DIN 5401.

End Bolts: ASTM A307.

Steel surface protection:Electrolytic alkaline Zinc coating 8-12 microns testet in salt chamber 900 hours without white rast.

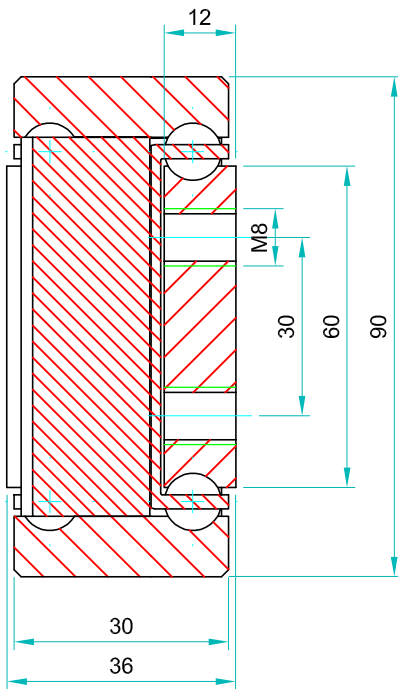
Maximum temperature:We recommend -40 to +200°C with low/high-temp lubrication and free movement to allow for steel expansion.

Note: The slide opening and the hole pattern, can be customized according customer's requirements.



Options:

- "V" - V shape channel raceways
- "F" - one outer beam countersunk
- "FF"- both outer beams countersunk
- "SB"- stainless steel ball bearings
- "SC"- stainless steel ball cages
- "SA"- stainless steel stopping pins and bolts



We recommend use the major axis.
Do not dismantle the slide !
The maximum safe load is given for a fully extended pair of slides, mounted on the major axis with a load spread uniformly along the inner beam
Flat mounted slide load capacities are reduced between 60-80%

Type:DTSB-90				Hole pattern		
Article number	Instalacion lenght:L	Extension lenght:D	Load per pair : kg	"A"	"B"	"C"
DTSB9036.0200	200	200	650	50	-	-
DTSB9036.0250	250	250	720	50	-	50
DTSB9036.0300	300	300	780	50	-	100
DTSB9036.0350	350	350	830	50	-	150
DTSB9036.0400	400	400	860	50	-	200
DTSB9036.0450	450	450	890	50	-	250
DTSB9036.0500	500	500	940	50	-	300
DTSB9036.0550	550	550	960	50	-	350
DTSB9036.0600	600	600	980	50	-	400
DTSB9036.0650	650	650	1000	50	200	-
DTSB9036.0700	700	700	1030	50	225	-
DTSB9036.0750	750	750	1040	50	250	-
DTSB9036.0800	800	800	1050	50	275	-
DTSB9036.0850	850	850	1045	50	300	-
DTSB9036.0900	900	900	1030	50	325	-
DTSB9036.0950	950	950	1015	50	350	-
DTSB9036.1000	1000	1000	995	50	375	-
DTSB9036.1050	1050	1050	980	50	400	-
DTSB9036.1100	1100	1100	950	50	425	-
DTSB9036.1150	1150	1150	920	50	450	-
DTSB9036.1200	1200	1200	900	50	475	-
DTSB9036.1250	1250	1250	880	50	500	-
DTSB9036.1300	1300	1300	850	50	525	-
DTSB9036.1350	1350	1350	820	50	550	-
DTSB9036.1400	1400	1400	790	50	575	-
DTSB9036.1450	1450	1450	740	50	600	-
DTSB9036.1500	1500	1500	710	50	625	-
DTSB9036.1550	1550	1550	690	50	650	-
DTSB9036.1600	1600	1600	660	50	675	-

Material:All steel parts.

Beams:Cold drawn carbon steel C45E+C, - EN 10277, milled raceways.

Ball cages:Zinc plated sheet steel.

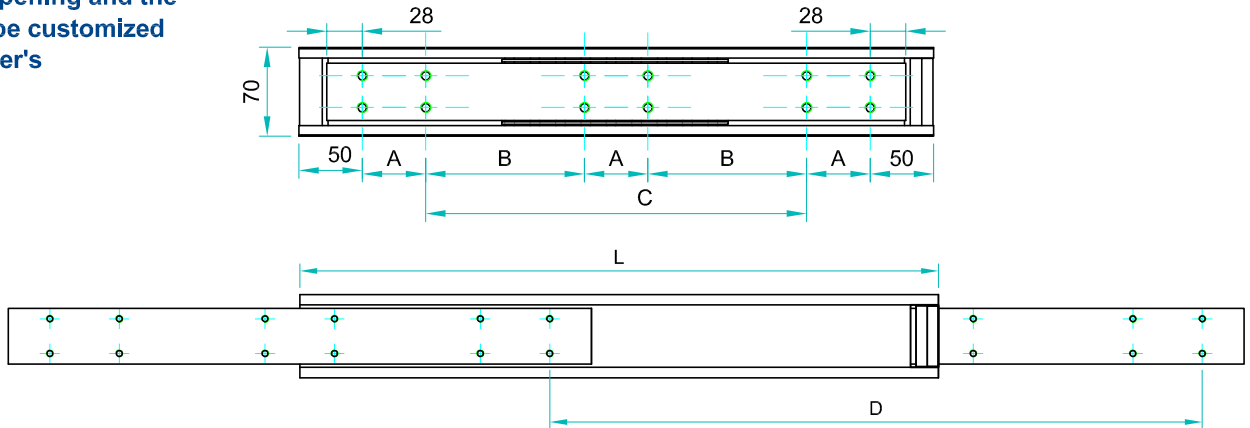
Ball bearings:Chromed C85,G100: DIN 5401.

End Bolts: ASTM A307.

Steel surface protection:Electrolytic alkaline Zinc coating 8-12 microns testet in salt chamber 900 hours without white rast.

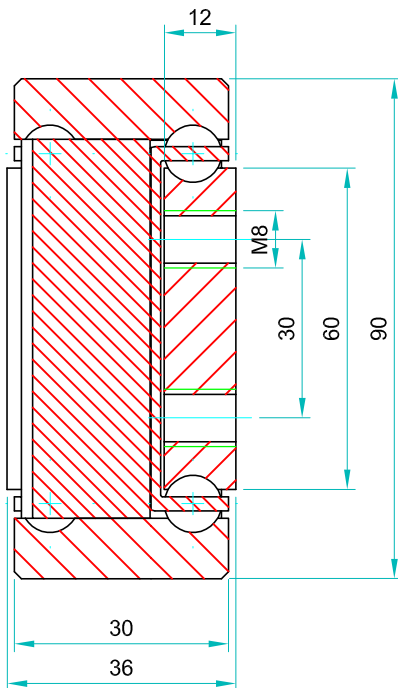
Maximum temperature:We recommend -40 to +200°C with low/high-temp lubrication and free movement to allow for steel expansion.

Note: The slide opening and the hole pattern, can be customized according customer's requirements.



Options:

- "V" - V shape channel raceways
- "F" - one outer beam countersunk
- "FF"- both outer beams countersunk
- "SB"- stainless steel ball bearings
- "SC"- stainless steel ball cages
- "SA"- stainless steel stopping pins and bolts



We recommend use the major axis.
Do not dismantle the slide !
The maximum safe load is given for a fully extended pair of slides, mounted on the major axis with a load spread uniformly along the inner beam. Flat mounted slide load capacities are reduced between 60-80%

Type:DTSB-90				Hole pattern		
Article number	Instalacion lenght:L	Extension lenght:D	Load per pair : kg	"A"	"B"	"C"
DTSB9036.1650	1650	1650	640	50	700	
DTSB9036.1700	1700	1700	620	100	650	
DTSB9036.1750	1750	1750	580	100	675	
DTSB9036.1800	1800	1800	540	100	700	
DTSB9036.1850	1850	1850	500	100	725	
DTSB9036.1900	1900	1900	470	100	750	
DTSB9036.1950	1950	1950	440	100	775	
DTSB9036.2000	2000	2000	420	100	800	
DTSB9036.2050	2050	2050	400	100	825	
DTSB9036.2100	2100	2100	380	100	850	
DTSB9036.2150	2150	2150	360	100	875	
DTSB9036.2200	2200	2200	340	100	900	
DTSB9036.2250	2250	2250	320	100	925	
DTSB9036.2300	2300	2300	300	100	950	
DTSB9036.2350	2350	2350	280	100	975	
DTSB9036.2400	2400	2400	260	100	1000	
DTSB9036.2450	2450	2450	240	100	1025	
DTSB9036.2500	2500	2500	220	100	1050	
DTSB9036.2550	2550	2550	200	100	1075	
DTSB9036.2600	2600	2600	180	100	1100	
DTSB9036.2650	2650	2650	160	100	1125	
DTSB9036.2700	2700	2700	140	100	1150	
DTSB9036.2750	2750	2750	120	100	1175	
DTSB9036.2800	2800	2800	100	100	1200	
DTSB9036.2850	2850	2850	340	100	1225	
DTSB9036.2900	2900	2900	290	100	1250	
DTSB9036.2950	2950	2950	260	100	1275	
DTSB9036.3000	3000	3000	230	100	1300	

Material:All steel parts.

Beams:Cold drawn carbon steel C45E+C, - EN 10277, milled raceways.

Ball cages:Zinc plated sheet steel.

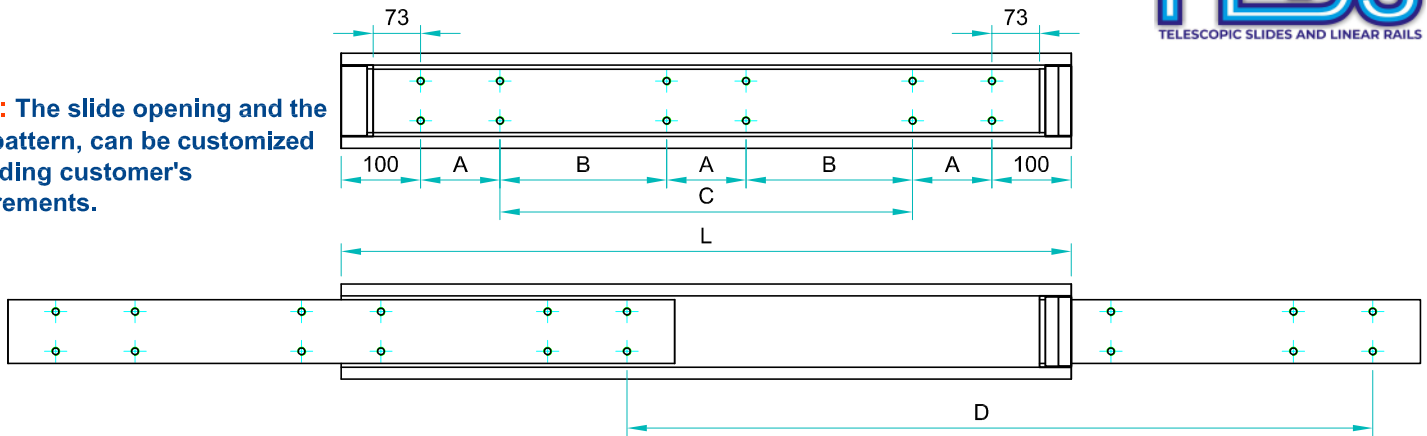
Ball bearings:Chromed C85,G100: DIN 5401.

End Bolts: ASTM A307.

Steel surface protection:Electrolytic alkaline Zinc coating 8-12 microns testet in salt chamber 900 hours without white rast.

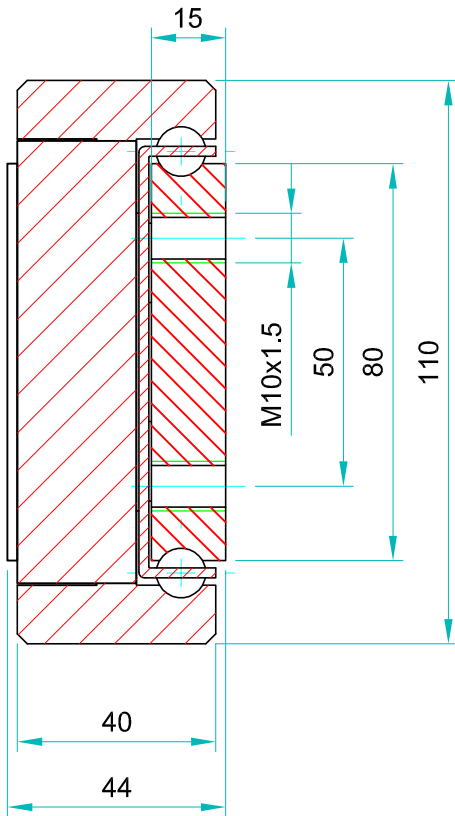
Maximum temperature:We recommend -40 to +200°C with low/high-temp lubrication and free movement to allow for steel expansion.

Note: The slide opening and the hole pattern, can be customized according customer's requirements.



Options:

- "V" - V shape channel raceways
- "F" - one outer beam countersunk
- "FF"- both outer beams countersunk
- "SB"- stainless steel ball bearings
- "SC"- stainless steel ball cages
- "SA"- stainless steel stopping pins and bolts



We recommend use the major axis.
Do not dismantle the slide !
The maximum safe load is given for a fully extended pair of slides, mounted on the major axis with a load spread uniformly along the inner beam.
Flat mounted slide load capacities are reduced between 60-80%

Type: DTSB-110				Hole pattern		
Article number	Instalacion lenght : L	Extension lenght : D	Load per pair (kg)	"A"	"B"	"C"
					-	-
					-	-
DTSB11044.0300	300	300	1430	100	-	-
DTSB11044.0350	350	350	1485	50	-	50
DTSB11044.0400	400	400	1540	50	-	100
DTSB11044.0450	450	450	1595	50	-	150
DTSB11044.0500	500	500	1650	50	-	200
DTSB11044.0550	550	550	1700	50	-	250
DTSB11044.0600	600	600	1740	50	-	300
DTSB11044.0650	650	650	1780	50	150	-
DTSB11044.0700	700	700	1800	50	175	-
DTSB11044.0750	750	750	1780	50	200	-
DTSB11044.0800	800	800	1760	100	150	-
DTSB11044.0850	850	850	1730	100	175	-
DTSB11044.0900	900	900	1690	100	200	-
DTSB11044.0950	950	950	1660	100	225	-
DTSB11044.1000	1000	1000	1630	100	250	-
DTSB11044.1050	1050	1050	1600	100	275	-
DTSB11044.1100	1100	1100	1560	100	300	-
DTSB11044.1150	1150	1150	1530	100	325	-
DTSB11044.1200	1200	1200	1500	100	350	-
DTSB11044.1250	1250	1250	1470	100	375	-
DTSB11044.1300	1300	1300	1440	100	400	-
DTSB11044.1350	1350	1350	1400	100	425	-
DTSB11044.1400	1400	1400	1360	100	450	-
DTSB11044.1450	1450	1450	1320	100	475	-
DTSB11044.1500	1500	1500	1280	100	500	-
DTSB11044.1550	1550	1550	1240	100	525	-
DTSB11044.1600	1600	1600	1200	100	550	-

Material:All steel parts.

Beams:Cold drawn carbon steel C45E+C, - EN 10277, milled raceways.

Ball cages:Zinc plated sheet steel.

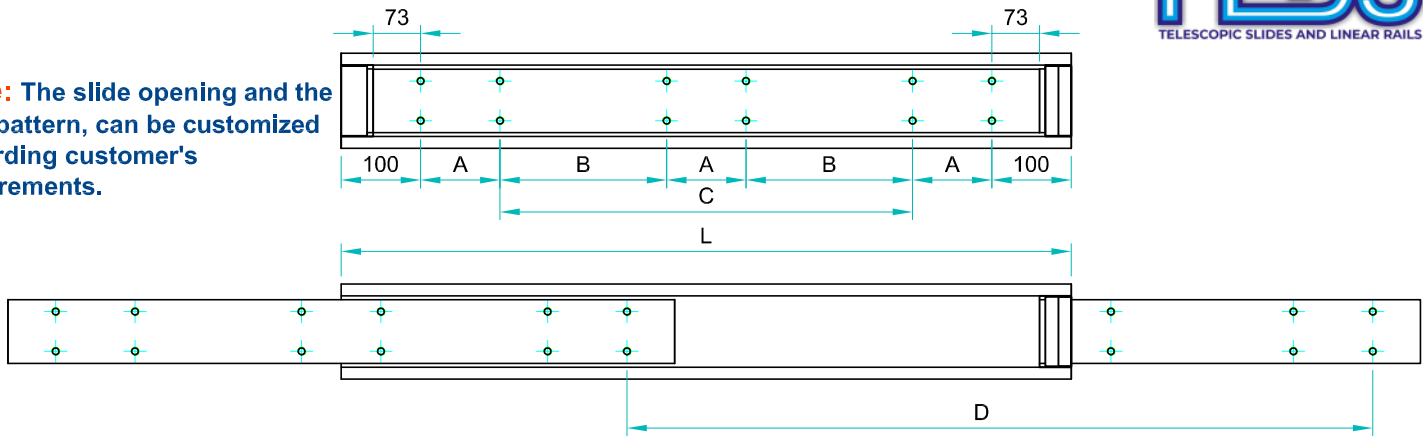
Ball bearings:Chromed C85,G100: DIN 5401.

End Bolts: ASTM A307.

Steel surface protection:Electrolytic alkaline Zinc coating 8-12 microns testet in salt chamber 900 hours without white rast.

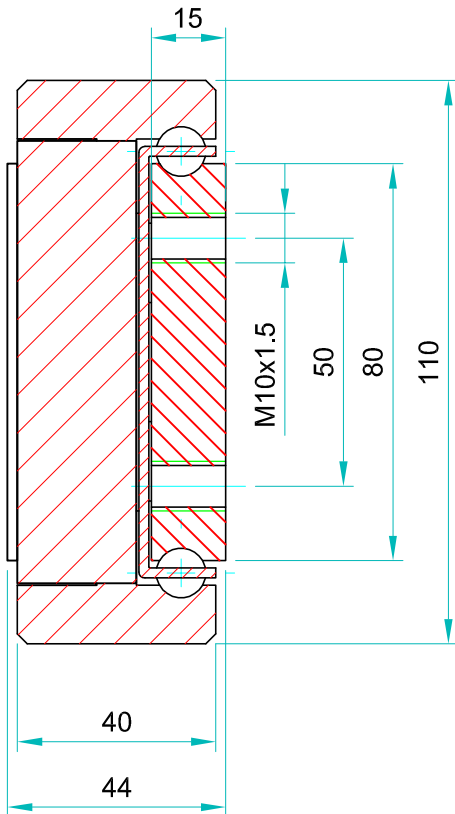
Maximum temperature:We recommend -40 to +200°C with low/high-temp lubrication and free movement to allow for steel expansion.

Note: The slide opening and the hole pattern, can be customized according customer's requirements.



Options:

- "V" - V shape channel raceways
- "F" - one outer beam countersunk
- "FF" - both outer beams countersunk
- "SB" - stainless steel ball bearings
- "SC" - stainless steel ball cages
- "SA" - stainless steel stopping pins and bolts



Type: DTSB-110				Hole pattern		
Article number	Instalacion lenght : L	Extension lenght : D	Load per pair (kg)	"A"	"B"	"C"
DTSB11044.1650	1650	1650	1160	100	575	
DTSB11044.1700	1700	1700	1100	100	600	
DTSB11044.1750	1750	1750	1060	100	625	
DTSB11044.1800	1800	1800	1000	100	650	
DTSB11044.1850	1850	1850	960	100	675	
DTSB11044.1900	1900	1900	910	100	700	
DTSB11044.1950	1950	1950	860	100	725	
DTSB11044.2000	2000	2000	800	100	750	
DTSB11044.2100	2100	2100	720	100	800	
DTSB11044.2200	2200	2200	680	100	850	
DTSB11044.2300	2300	2300	600	100	900	
DTSB11044.2400	2400	2400	540	100	950	
DTSB11044.2500	2500	2500	480	100	1000	
DTSB11044.2600	2600	2600	400	100	1050	
DTSB11044.2700	2700	2700	340	100	1100	
DTSB11044.2800	2800	2800	280	100	1150	
DTSB11044.2900	2900	2900	220	100	1200	
DTSB11044.3000	3000	3000	160	100	1250	



We recommend use the major axis.
Do not dismantle the slide !
The maximum safe load is given for a fully extended pair of slides, mounted on the major axis with a load spread uniformly along the inner beam. Flat mounted slide load capacities are reduced between 60-80%

Material:All steel parts.

Beams:Cold drawn carbon steel C45E+C, - EN 10277, milled raceways.

Ball cages:Zinc plated sheet steel.

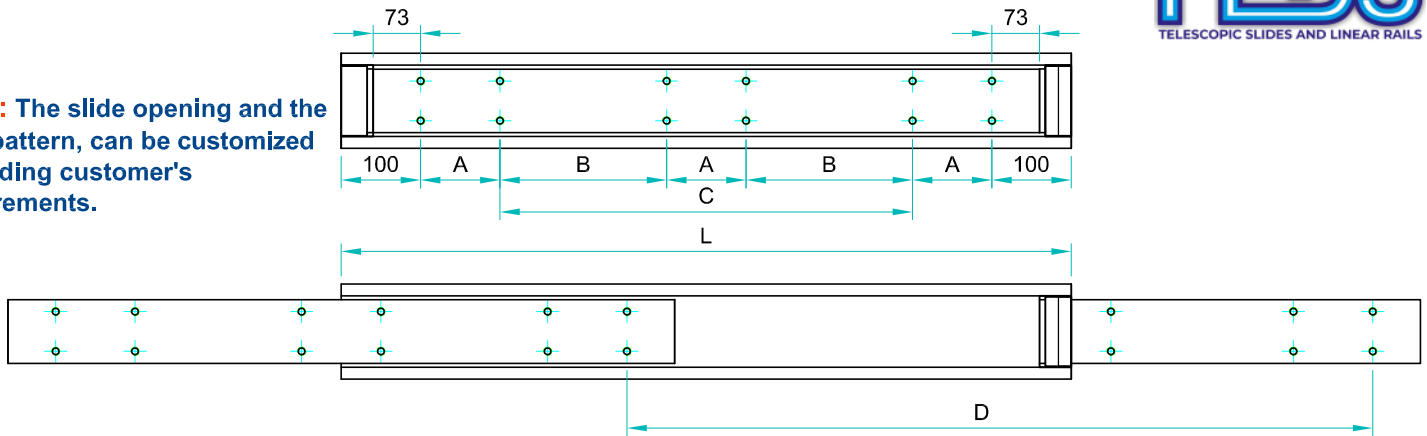
Ball bearings:Chromed C85,G100: DIN 5401.

End Bolts: ASTM A307.

Steel surface protection:Electrolytic alkaline Zinc coating 8-12 microns testet in salt chamber 900 hours without white rast.

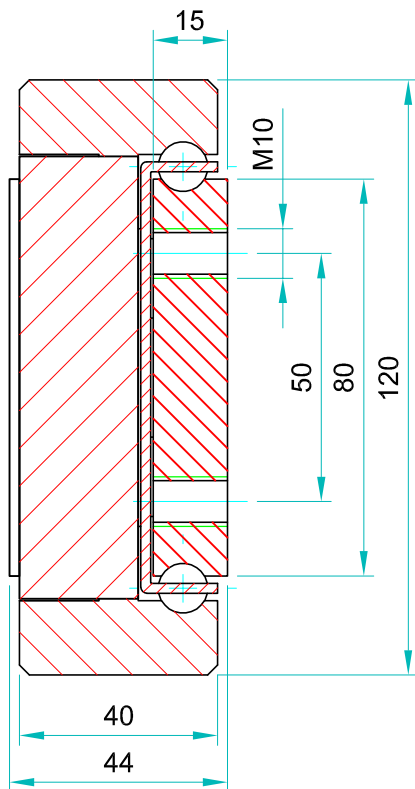
Maximum temperature:We recommend -40 to +200°C with low/high-temp lubrication and free movement to allow for steel expansion.

Note: The slide opening and the hole pattern, can be customized according customer's requirements.



Options:

- "V" - V shape channel raceways
- "F" - one outer beam countersunk
- "FF"- both outer beams countersunk
- "SB"- stainless steel ball bearings
- "SC"- stainless steel ball cages
- "SA"- stainless steel stopping pins and bolts



We recommend use the major axis.
Do not dismantle the slide !
The maximum safe load is given for a fully extended pair of slides, mounted on the major axis with a load spread uniformly along the inner beam. Flat mounted slide load capacities are reduced between 60-80%

Type: DTSB-120				Hole pattern		
Article number	Instalacion lenght : L	Extension lenght : D	Load per pair (kg)	"A"	"B"	"C"
					-	-
DTSB12044.0300	300	300	1480	100	-	-
DTSB12044.0350	350	350	1560	50	-	50
DTSB12044.0400	400	400	1640	50	-	100
DTSB12044.0450	450	450	1720	50	-	150
DTSB12044.0500	500	500	1760	50	-	200
DTSB12044.0550	550	550	1820	50	-	250
DTSB12044.0600	600	600	1850	50	-	300
DTSB12044.0650	650	650	1870	50	150	-
DTSB12044.0700	700	700	1890	50	175	-
DTSB12044.0750	750	750	1860	50	200	-
DTSB12044.0800	800	800	1840	100	150	-
DTSB12044.0850	850	850	1820	100	175	-
DTSB12044.0900	900	900	1790	100	200	-
DTSB12044.0950	950	950	1760	100	225	-
DTSB12044.1000	1000	1000	1730	100	250	-
DTSB12044.1050	1050	1050	1700	100	275	-
DTSB12044.1100	1100	1100	1660	100	300	-
DTSB12044.1150	1150	1150	1630	100	325	-
DTSB12044.1200	1200	1200	1600	100	350	-
DTSB12044.1250	1250	1250	1570	100	375	-
DTSB12044.1300	1300	1300	1540	100	400	-
DTSB12044.1350	1350	1350	1500	100	425	-
DTSB12044.1400	1400	1400	1460	100	450	-
DTSB12044.1450	1450	1450	1410	100	475	-
DTSB12044.1500	1500	1500	1370	100	500	-
DTSB12044.1550	1550	1550	1320	100	525	-
DTSB12044.1600	1600	1600	1280	100	550	-

Material:All steel parts.

Beams:Cold drawn carbon steel C45E+C, - EN 10277, milled raceways.

Ball cages:Zinc plated sheet steel.

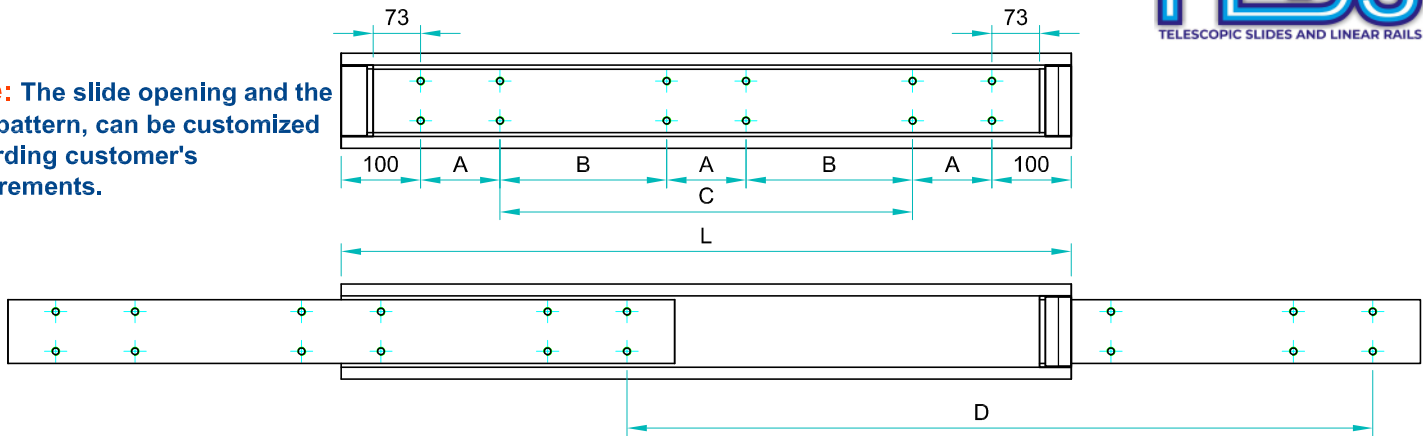
Ball bearings:Chromed C85,G100: DIN 5401.

End Bolts: ASTM A307.

Steel surface protection:Electrolytic alkaline Zinc coating 8-12 microns testet in salt chamber 900 hours without white rast.

Maximum temperature:We recommend -40 to +200°C with low/high-temp lubrication and free movement to allow for steel expansion.

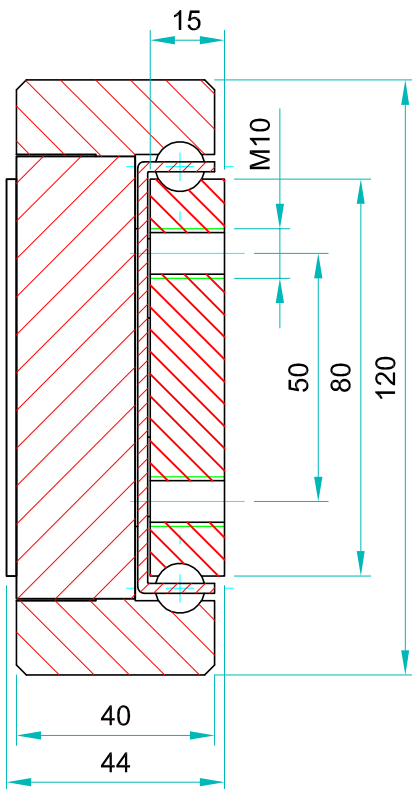
Note: The slide opening and the hole pattern, can be customized according customer's requirements.



Options:

- "V" - V shape channel raceways
- "F" - one outer beam countersunk
- "FF" - both outer beams countersunk
- "SB" - stainless steel ball bearings
- "SC" - stainless steel ball cages
- "SA" - stainless steel stopping pins and bolts

Type: DTSB-120				Hole pattern		
Article number	Instalacion lenght : L	Extension lenght : D	Load per pair (kg)	"A"	"B"	"C"
DTSB12044.1650	1650	1650	1230	100	575	
DTSB12044.1700	1700	1700	1180	100	600	
DTSB12044.1750	1750	1750	1130	100	625	
DTSB12044.1800	1800	1800	1080	100	650	
DTSB12044.1850	1850	1850	1030	100	675	
DTSB12044.1900	1900	1900	980	100	700	
DTSB12044.1950	1950	1950	920	100	725	
DTSB12044.2000	2000	2000	860	100	750	
DTSB12044.2100	2100	2100	800	100	800	
DTSB12044.2200	2200	2200	740	100	850	
DTSB12044.2300	2300	2300	680	100	900	
DTSB12044.2400	2400	2400	620	100	950	
DTSB12044.2500	2500	2500	560	100	1000	
DTSB12044.2600	2600	2600	500	100	1050	
DTSB12044.2700	2700	2700	440	100	1100	
DTSB12044.2800	2800	2800	380	100	1150	
DTSB12044.2900	2900	2900	320	100	1200	
DTSB12044.3000	3000	3000	260	100	1250	



We recommend use the major axis.
Do not dismantle the slide !
The maximum safe load is given for a fully extended pair of slides, mounted on the major axis with a load spread uniformly along the inner beam. Flat mounted slide load capacities are reduced between 60-80%

Material:All steel parts.

Beams:Cold drawn carbon steel C45E+C, - EN 10277, milled raceways.

Ball cages:Zinc plated sheet steel.

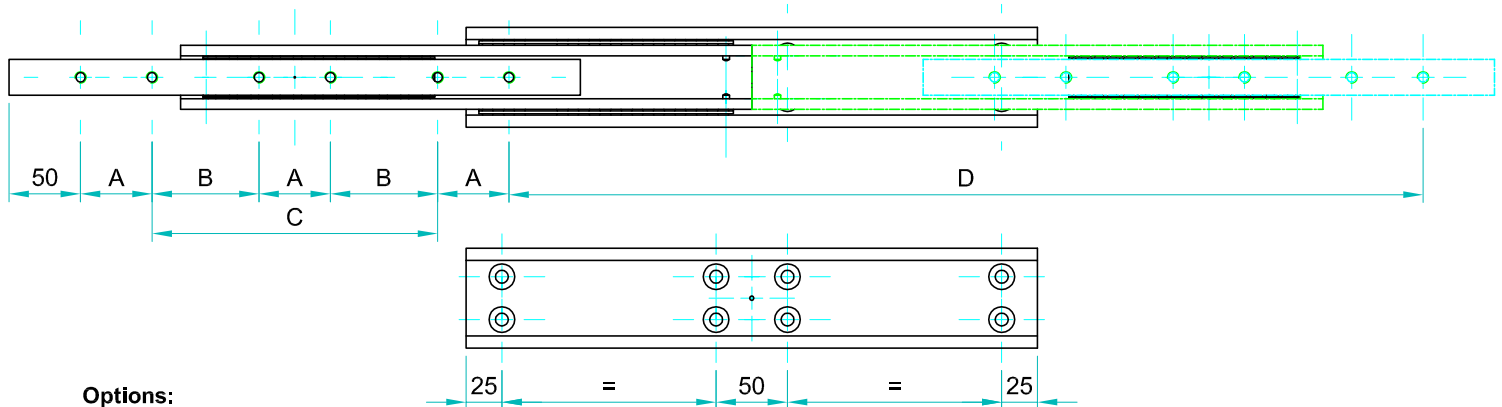
Ball bearings:Chromed C85,G100: DIN 5401.

End Bolts: ASTM A307.

Steel surface protection:Electrolytic alkaline Zinc coating 8-12 microns testet in salt chamber 900 hours without white rast.

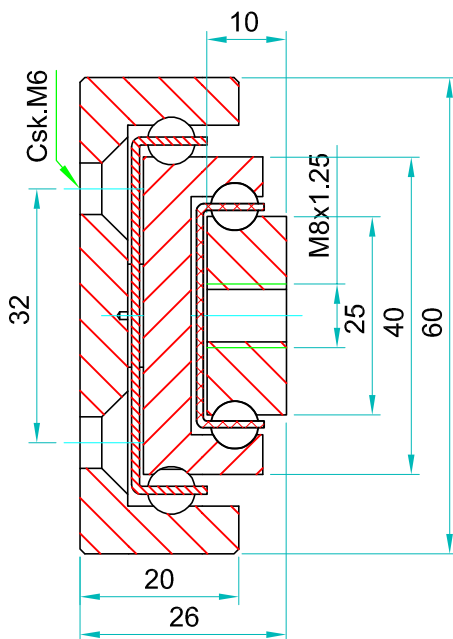
Maximum temperature:We recommend -40 to +200°C with low/high-temp lubrication and free movement to allow for steel expansion.

Note: The slide opening and the hole pattern, can be customized according customer's requirements.



Options:

- "V" - V shape channel raceways
- "F" - one outer beam countersunk
- "SB"- stainless steel ball bearings
- "SC"- stainless steel ball cages
- "SA"- stainless steel stopping pins and bolts



We recommend use the major axis.
Do not dismantle the slide !
The maximum safe load is given for a fully extended pair of slides, mounted on the major axis with a load spread uniformly along the inner beam. Flat mounted slide load capacities are reduced between 60-80%

Type: TSRT-60			Hole pattern			
Article number	Instalacion lenght :L	Extension lenght:D	Load per pair: kg	"A"	"B"	"C"
TSRT6026.0300	300	300	274	50	-	100
TSRT6026.0350	350	350	279	50	-	150
TSRT6026.0400	400	400	284	50	-	200
TSRT6026.0450	450	450	288	50	-	250
TSRT6026.0500	500	500	294	50	-	300
TSRT6026.0550	550	550	300	50	150	
TSRT6026.0600	600	600	307	50	175	
TSRT6026.0650	650	650	314	50	200	-
TSRT6026.0700	700	700	310	50	225	-
TSRT6026.0750	750	750	306	50	250	-
TSRT6026.0800	800	800	300	50	275	-
TSRT6026.0850	850	850	292	50	300	-
TSRT6026.0900	900	900	286	50	325	-
TSRT6026.0950	950	950	280	50	350	-
TSRT6026.1000	1000	1000	272	50	375	-
TSRT6026.1050	1050	1050	262	50	400	-
TSRT6026.1100	1100	1100	252	50	425	-
TSRT6026.1150	1150	1150	242	50	450	-
TSRT6026.1200	1200	1200	232	50	475	-
TSRT6026.1250	1250	1250	222	50	500	-
TSRT6026.1300	1300	1300	212	50	525	-
TSRT6026.1350	1350	1350	200	50	550	-
TSRT6026.1400	1400	1400	190	50	575	-
TSRT6026.1450	1450	1450	180	50	600	-
TSRT6026.1500	1500	1500	170	50	625	-
TSRT6026.1550	1550	1550	160	50	650	-
TSRT6026.1600	1600	1600	150	50	675	-

Material:All steel parts.

Beams:Cold drawn carbon steel C45E+C, - EN 10277, milled raceways.

Ball cages:Zinc plated sheet steel.

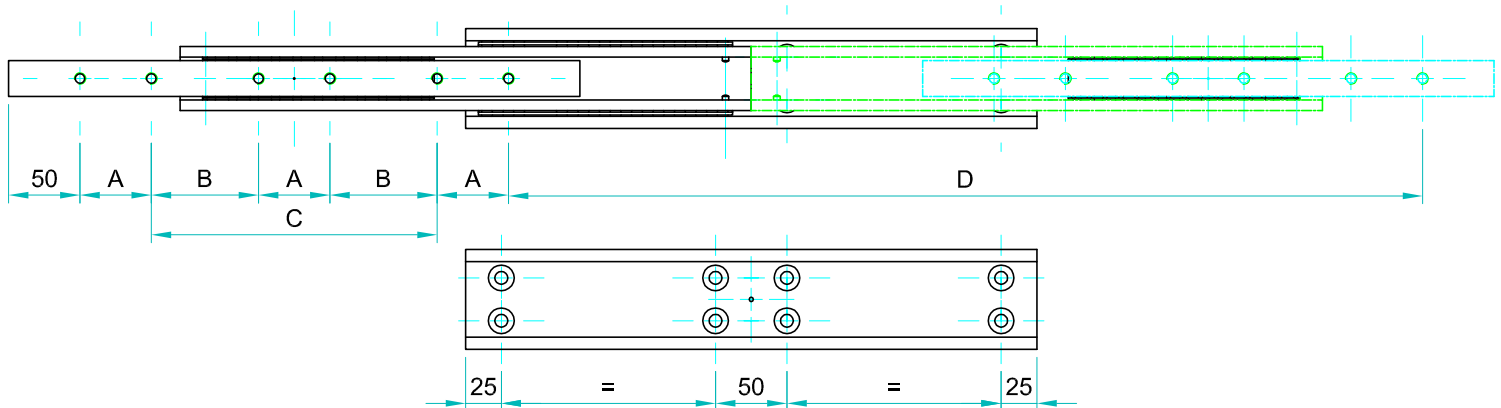
Ball bearings:Chromed C85,G100: DIN 5401.

End Bolts: ASTM A307.

Steel surface protection:Electrolytic alkaline Zinc coating 8-12 microns testet in salt chamber 900 hours without white rast.

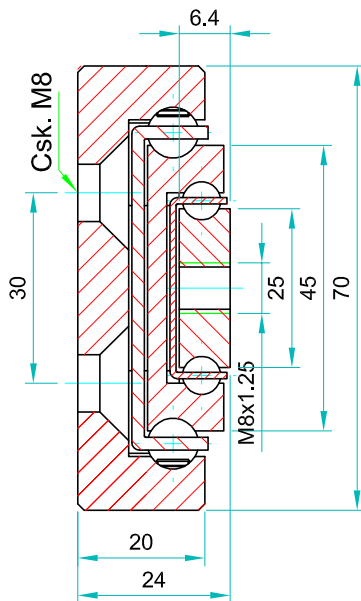
Maximum temperature:We recommend -40 to +200°C with low/high-temp lubrication and free movement to allow for steel expansion.

Note: The slide opening and the hole pattern, can be customized according customer's requirements.



Options:

- "V" - V shape channel raceways
- "F" - one outer beam countersunk
- "SB"- stainless steel ball bearings
- "SC"- stainless steel ball cages
- "SA"- stainless steel stopping pins and bolts



We recommend use the major axis.
Do not dismantle the slide !
The maximum safe load is given for a fully extended pair of slides, mounted on the major axis with a load spread uniformly along the inner beam. Flat mounted slide load capacities are reduced between 60-80%

Type: TSRT-70				Hole pattern		
Article number	Instalacion lenght :L	Extension lenght:D	Load per pair: kg	"A"	"B"	"C"
TSRT7024.0300	300	300	390	50	-	100
TSRT7024.0350	350	350	395	50	-	150
TSRT7024.0400	400	400	400	50	-	200
TSRT7024.0450	450	450	405	50	-	250
TSRT7024.0500	500	500	415	50	-	300
TSRT7024.0550	550	550	420	50	-	350
TSRT7024.0600	600	600	430	50	-	400
TSRT7024.0650	650	650	435	50	200	-
TSRT7024.0700	700	700	430	50	225	-
TSRT7024.0750	750	750	425	50	250	-
TSRT7024.0800	800	800	420	50	275	-
TSRT7024.0850	850	850	410	50	300	-
TSRT7024.0900	900	900	400	50	325	-
TSRT7024.0950	950	950	395	50	350	-
TSRT7024.1000	1000	1000	380	50	375	-
TSRT7024.1050	1050	1050	365	50	400	-
TSRT7024.1100	1100	1100	350	50	425	-
TSRT7024.1150	1150	1150	340	50	450	-
TSRT7024.1200	1200	1200	325	50	475	-
TSRT7024.1250	1250	1250	310	50	500	-
TSRT7024.1300	1300	1300	290	50	525	-
TSRT7024.1350	1350	1350	280	50	550	-
TSRT7024.1400	1400	1400	270	50	575	-
TSRT7024.1450	1450	1450	260	50	600	-
TSRT7024.1500	1500	1500	245	50	625	-
TSRT7024.1550	1550	1550	230	50	650	-
TSRT7024.1600	1600	1600	215	50	675	-
TSRT7024.1650	1650	1650	200	50	700	-
TSRT7024.1700	1700	1700	185	100	650	-
TSRT7024.1750	1750	1750	165	100	675	-
TSRT7024.1800	1800	1800	145	100	700	-
TSRT7024.1850	1850	1850	125	100	725	-
TSRT7024.1900	1900	1900	105	100	750	-
TSRT7024.1950	1950	1950	85	100	775	-
TSRT7024.2000	2000	2000	65	100	800	-

Material:All steel parts.

Beams:Cold drawn carbon steel C45E+C, - EN 10277, milled raceways.

Ball cages:Zinc plated sheet steel.

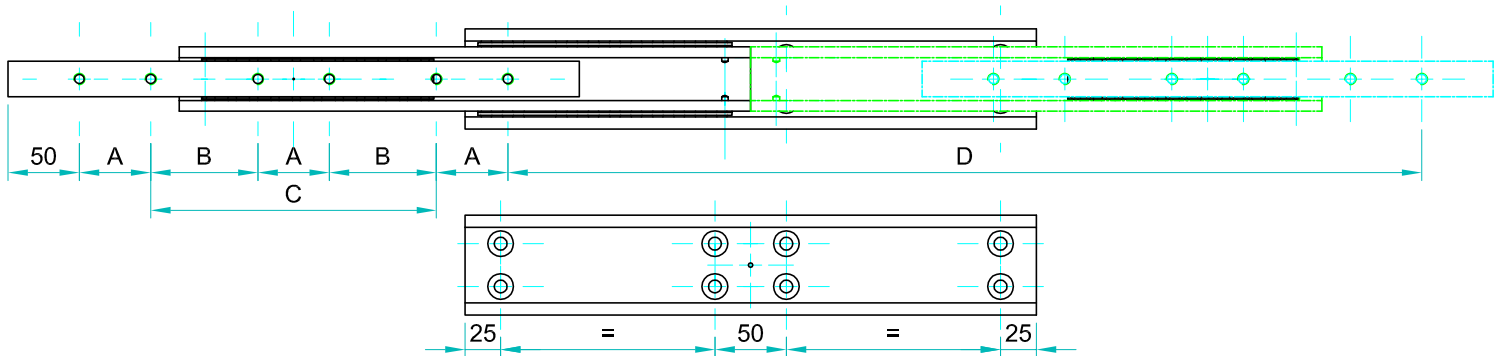
Ball bearings:Chromed C85,G100: DIN 5401.

End Bolts: ASTM A307.

Steel surface protection:Electrolytic alkaline Zinc coating 8-12 microns testet in salt chamber 900 hours without white rast.

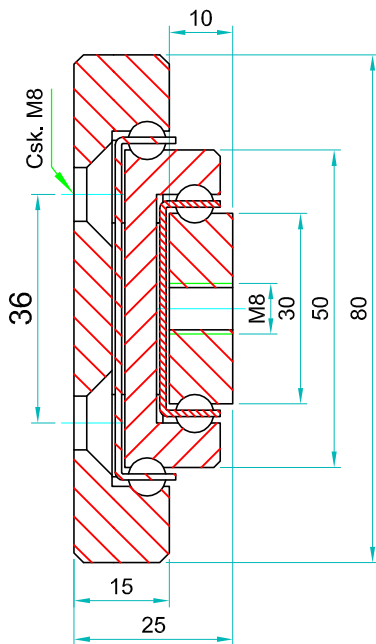
Maximum temperature:We recommend -40 to +200°C with low/high-temp lubrication and free movement to allow for steel expansion.

Note: The slide opening and the hole pattern, can be customized according customer's requirements.



Options:

- "V" - V shape channel raceways
- "F" - one outer beam countersunk
- "SB"- stainless steel ball bearings
- "SC"- stainless steel ball cages
- "SA"- stainless steel stopping pins and bolts



We recommend use the major axis.
Do not dismantle the slide !
The maximum safe load is given for a fully extended pair of slides, mounted on the major axis with a load spread uniformly along the inner beam. Flat mounted slide load capacities are reduced between 60-80%

Type: TSRT-80			Hole pattern			
Article number	Instalacion length :L	Extension length:D	Load per pair: kg	"A"	"B"	"C"
TSRT8025.0300	300	300	390	50	-	100
TSRT8025.0350	350	350	400	50	-	150
TSRT8025.0400	400	400	405	50	-	200
TSRT8025.0450	450	450	410	50	-	250
TSRT8025.0500	500	500	415	50	-	300
TSRT8025.0550	550	550	420	50	-	350
TSRT8025.0600	600	600	425	50	-	400
TSRT8025.0650	650	650	435	50	200	-
TSRT8025.0700	700	700	430	50	225	-
TSRT8025.0750	750	750	425	50	250	-
TSRT8025.0800	800	800	420	50	275	-
TSRT8025.0850	850	850	410	50	300	-
TSRT8025.0900	900	900	400	50	325	-
TSRT8025.0950	950	950	390	50	350	-
TSRT8025.1000	1000	1000	380	50	375	-
TSRT8025.1050	1050	1050	370	50	400	-
TSRT8025.1100	1100	1100	360	50	425	-
TSRT8025.1150	1150	1150	345	50	450	-
TSRT8025.1200	1200	1200	330	50	475	-
TSRT8025.1250	1250	1250	315	50	500	-
TSRT8025.1300	1300	1300	300	50	525	-
TSRT8025.1350	1350	1350	280	50	550	-
TSRT8025.1400	1400	1400	260	50	575	-
TSRT8025.1450	1450	1450	250	50	600	-
TSRT8025.1500	1500	1500	240	50	625	-
TSRT8025.1550	1550	1550	230	50	650	-
TSRT8025.1600	1600	1600	220	50	675	-
TSRT8025.1650	1650	1650	210	50	700	-
TSRT8025.1700	1700	1700	200	100	650	-
TSRT8025.1750	1750	1750	190	100	675	-
TSRT8025.1800	1800	1800	180	100	700	-
TSRT8025.1850	1850	1850	170	100	725	-
TSRT8025.1900	1900	1900	160	100	750	-
TSRT8025.1950	1950	1950	150	100	775	-
TSRT8025.2000	2000	2000	140	100	800	-

Material:All steel parts.

Beams:Cold drawn carbon steel C45E+C, - EN 10277, milled raceways.

Ball cages:Zinc plated sheet steel.

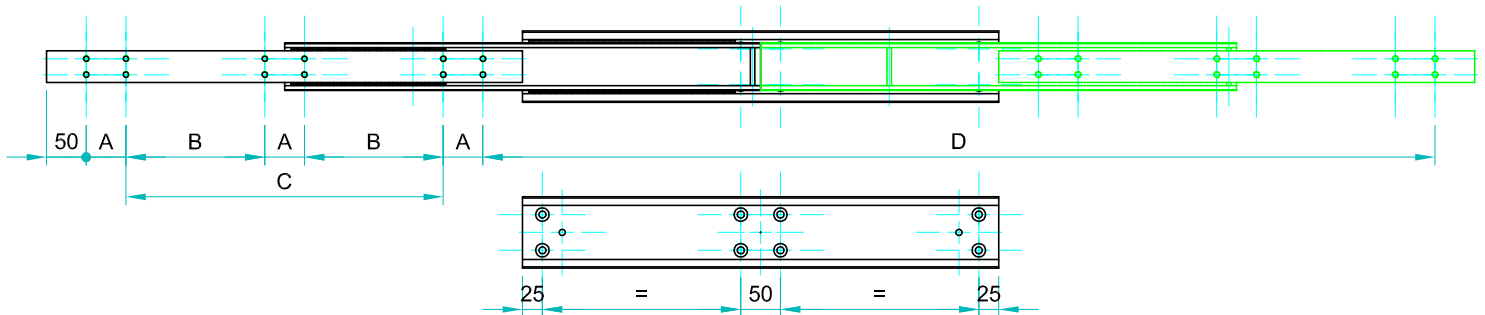
Ball bearings:Chromed C85,G100: DIN 5401.

End Bolts: ASTM A307.

Steel surface protection:Electrolytic alkaline Zinc coating 8-12 microns testet in salt chamber 900 hours without white rast.

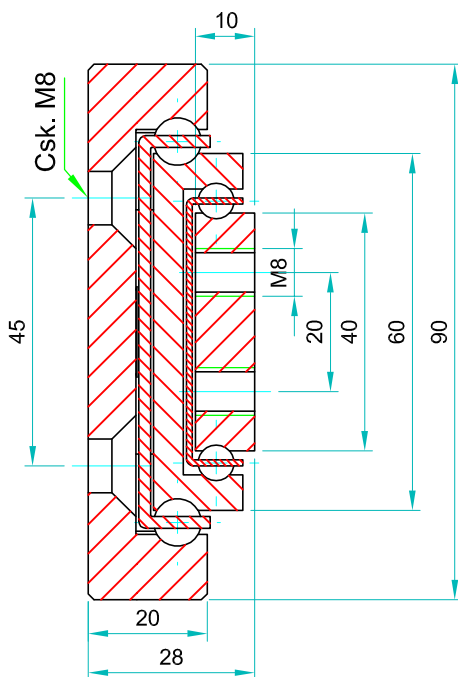
Maximum temperature:We recommend -40 to +200°C with low/high-temp lubrication and free movement to allow for steel expansion.

Note: The slide opening and the hole pattern, can be customized according customer's requirements.



Options:

- "V" - V shape channel raceways
- "F" - one outer beam countersunk
- "SB"- stainless steel ball bearings
- "SC"- stainless steel ball cages
- "SA"- stainless steel stopping pins and bolts



We recommend use the major axis.
Do not dismantle the slide !
The maximum safe load is given for a fully extended pair of slides, mounted on the major axis with a load spread uniformly along the inner beam. Flat mounted slide load capacities are reduced between 60-80%

Type: TSRT-90				Hole pattern		
Article number	Instalacion lenght :L	Extension lenght:D	Load per pair: kg	"A"	"B"	"C"
TSRT9028.0300	300	300	620	50	-	100
TSRT9028.0350	350	350	630	50	-	150
TSRT9028.0400	400	400	640	50	-	200
TSRT9028.0450	450	450	650	50	-	250
TSRT9028.0500	500	500	660	50	-	300
TSRT9028.0550	550	550	670	50	-	350
TSRT9028.0600	600	600	680	50	-	400
TSRT9028.0650	650	650	690	50	200	-
TSRT9028.0700	700	700	680	50	225	-
TSRT9028.0750	750	750	670	50	250	-
TSRT9028.0800	800	800	660	50	275	-
TSRT9028.0850	850	850	650	50	300	-
TSRT9028.0900	900	900	640	50	325	-
TSRT9028.0950	950	950	630	50	350	-
TSRT9028.1000	1000	1000	615	50	375	-
TSRT9028.1050	1050	1050	590	50	400	-
TSRT9028.1100	1100	1100	565	50	425	-
TSRT9028.1150	1150	1150	540	50	450	-
TSRT9028.1200	1200	1200	520	50	475	-
TSRT9028.1250	1250	1250	490	50	500	-
TSRT9028.1300	1300	1300	475	50	525	-
TSRT9028.1350	1350	1350	455	50	550	-
TSRT9028.1400	1400	1400	430	50	575	-
TSRT9028.1450	1450	1450	410	50	600	-
TSRT9028.1500	1500	1500	380	50	625	-
TSRT9028.1550	1550	1550	350	50	650	-
TSRT9028.1600	1600	1600	320	50	675	-
TSRT9028.1650	1650	1650	290	50	700	-
TSRT9028.1700	1700	1700	270	100	650	-
TSRT9028.1750	1750	1750	250	100	675	-
TSRT9028.1800	1800	1800	230	100	700	-
TSRT9028.1850	1850	1850	210	100	725	-
TSRT9028.1900	1900	1900	200	100	750	-
TSRT9028.1950	1950	1950	195	100	775	-
TSRT9028.2000	2000	2000	190	100	800	-

Material:All steel parts.

Beams:Cold drawn carbon steel C45E+C, - EN 10277, milled raceways.

Ball cages:Zinc plated sheet steel.

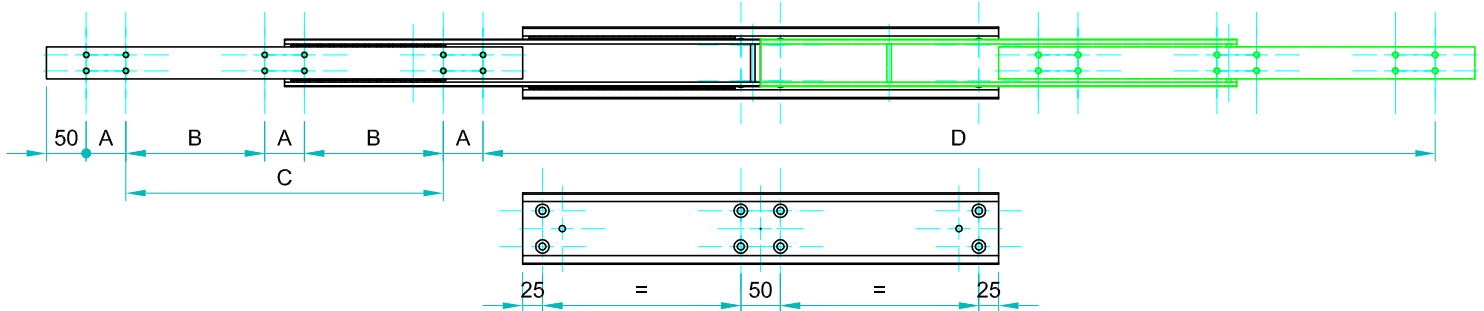
Ball bearings:Chromed C85,G100: DIN 5401.

End Bolts: ASTM A307.

Steel surface protection:Electrolytic alkaline Zinc coating 8-12 microns testet in salt chamber 900 hours without white rast.

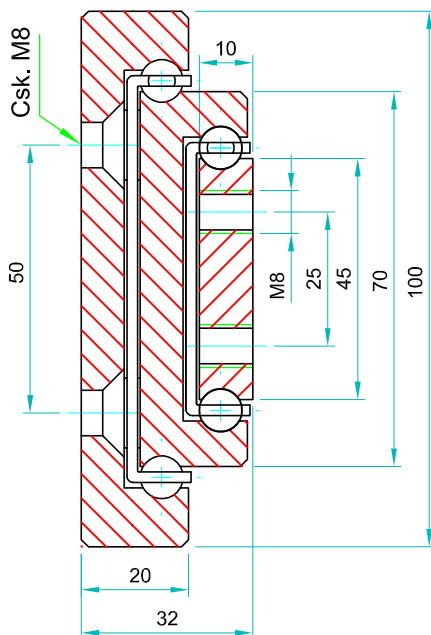
Maximum temperature:We recommend -40 to +200°C with low/high-temp lubrication and free movement to allow for steel expansion.

Note: The slide opening and the hole pattern, can be customized according customer's requirements.



Options:

- "V" - V shape channel raceways
- "F" - one outer beam countersunk
- "SB"- stainless steel ball bearings
- "SC"- stainless steel ball cages
- "SA"- stainless steel stopping pins and bolts



We recommend use the major axis.
Do not dismantle the slide !
The maximum safe load is given for a fully extended pair of slides, mounted on the major axis with a load spread uniformly along the inner beam. Flat mounted slide load capacities are reduced between 60-80%

Type: TSRT-100				Hole pattern		
Article number	Instalacion lenght :L	Extension lenght:D	Load per pair: kg	"A"	"B"	"C"
TSRT10027.0300	300	300	820	50	-	100
TSRT10027.0350	350	350	860	50	-	150
TSRT10027.0400	400	400	900	50	-	200
TSRT10027.0450	450	450	940	50	-	250
TSRT10027.0500	500	500	960	50	-	300
TSRT10027.0550	550	550	980	50	-	350
TSRT10027.0600	600	600	1000	50	-	400
TSRT10027.0650	650	650	980	50	200	-
TSRT10027.0700	700	700	950	50	225	-
TSRT10027.0750	750	750	920	50	250	-
TSRT10027.0800	800	800	890	50	275	-
TSRT10027.0850	850	850	860	50	300	-
TSRT10027.0900	900	900	830	50	325	-
TSRT10027.0950	950	950	820	50	350	-
TSRT10027.1000	1000	1000	800	50	375	-
TSRT10027.1050	1050	1050	780	50	400	-
TSRT10027.1100	1100	1100	760	50	425	-
TSRT10027.1150	1150	1150	740	50	450	-
TSRT10027.1200	1200	1200	720	50	475	-
TSRT10027.1250	1250	1250	700	50	500	-
TSRT10027.1300	1300	1300	680	50	525	-
TSRT10027.1350	1350	1350	660	50	550	-
TSRT10027.1400	1400	1400	640	50	575	-
TSRT10027.1450	1450	1450	620	50	600	-
TSRT10027.1500	1500	1500	600	50	625	-
TSRT10027.1550	1550	1550	580	50	650	-
TSRT10027.1600	1600	1600	560	50	675	-
TSRT10027.1650	1650	1650	540	50	700	-
TSRT10027.1700	1700	1700	520	100	650	-
TSRT10027.1750	1750	1750	500	100	675	-
TSRT10027.1800	1800	1800	480	100	700	-
TSRT10027.1850	1850	1850	460	100	725	-
TSRT10027.1900	1900	1900	440	100	750	-
TSRT10027.1950	1950	1950	420	100	775	-
TSRT10027.2000	2000	2000	400	100	800	-

Material:All steel parts.

Beams:Cold drawn carbon steel C45E+C, - EN 10277, milled raceways.

Ball cages:Zinc plated sheet steel.

Ball bearings:Chromed C85,G100: DIN 5401.

End Bolts: ASTM A307.

Steel surface protection:Electrolytic alkaline Zinc coating 8-12 microns testet in salt chamber 900 hours without white rast.

Maximum temperature:We recommend -40 to +200°C with low/high-temp lubrication and free movement to allow for steel expansion.