



TELESCOPIC SLIDES AND LINEAR RAILS

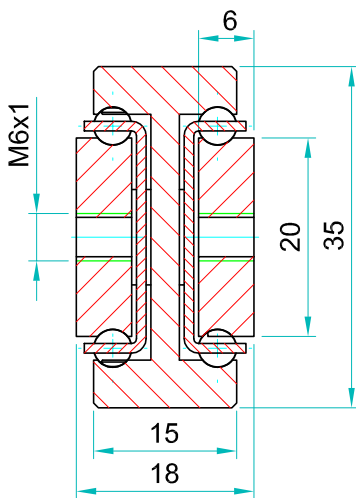
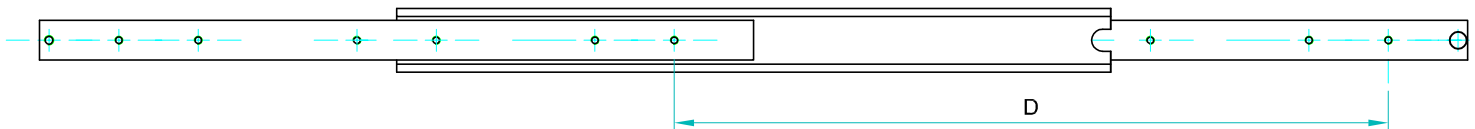
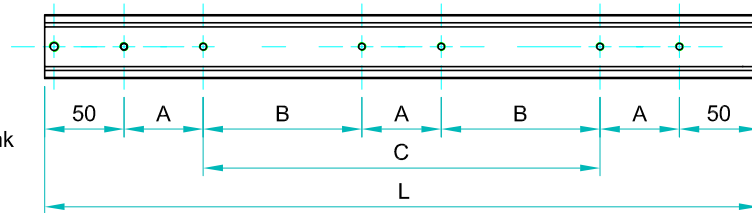
Full extension

Slide type: **DTS**
DOWS
STR
TSR

Note: The slide opening and the hole pattern, can be customized according customer's requirements.

Options:

- "V" - V shape channel raceways
- "F" - one outer beam countersunk
- "FF"- both outer beams countersunk
- "SB"- stainless steel ball bearings
- "SC"- stainless steel ball cages
- "SA"- stainless steel stopping pins and bolts



Type: DTS-35				Hole pattern		
Article number	Instalacion length : L	Extension length: D	Load per pair (kg)	"A"	"B"	"C"
DTS3518.0150	150	150	60	50		-
DTS3518.0200	200	200	70	50		-
DTS3518.0250	250	250	80	50		50
DTS3518.0300	300	300	90	50		100
DTS3518.0350	350	350	100	50		150
DTS3518.0400	400	400	110	50		200
DTS3518.0450	450	450	120	50		250
DTS3518.0500	500	500	130	50		300
DTS3518.0550	550	550	100	50	150	-
DTS3518.0600	600	600	90	50	175	-
DTS3518.0650	650	650	85	50	200	-
DTS3518.0700	700	700	80	50	225	-
DTS3518.0750	750	750	75	50	250	-
DTS3518.0800	800	800	70	50	275	-
DTS3518.0850	850	850	65	50	300	-
DTS3518.0900	900	900	60	50	325	-
DTS3518.0950	950	950	55	50	350	-
DTS3518.1000	1000	1000	50	50	375	-



We recommend use the major axis.
Do not dismantle the slide !
The maximum safe load is given for a fully extended pair of slides, mounted on the major axis with a load spread uniformly along the inner beam. Flat mounted slide load capacities are reduced between 60-80%

Material:All steel parts.

Beams:Cold drawn carbon steel C45E+C, - EN 10277, milled raceways.

Ball cages:Zinc plated sheet steel.

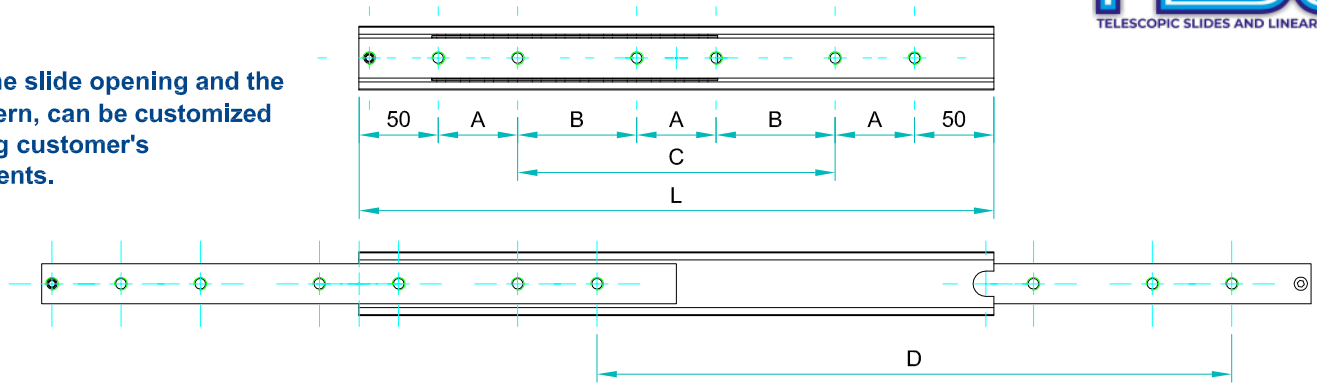
Ball bearings:Chromed C85,G100: DIN 5401.

End Bolts: ASTM A307.

Steel surface protection:Electrolytic alkaline Zinc coating 8-12 microns testet in salt chamber 900 hours without white rast.

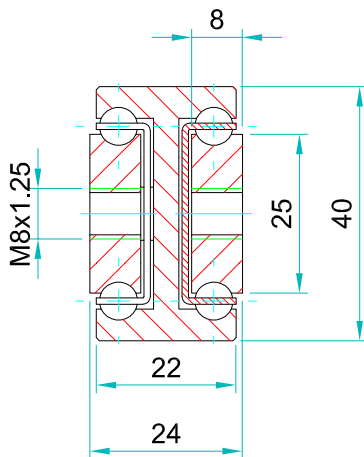
Maximum temperature:We recommend -40 to +200°C with low/high-temp lubrication and free movement to allow for steel expansion.

Note: The slide opening and the hole pattern, can be customized according customer's requirements.



Options:

- "V" - V shape channel raceways
- "F" - one outer beam countersunk
- "FF"- both outer beams countersunk
- "SB"- stainless steel ball bearings
- "SC"- stainless steel ball cages
- "SA"- stainless steel stopping pins and bolts



We recommend use the major axis.
Do not dismantle the slide !
The maximum safe load is given for a fully extended pair of slides, mounted on the major axis with a load spread uniformly along the inner beam. Flat mounted slide load capacities are reduced between 60-80%

Type: DTS-40				Hole pattern		
Article number	Instalacion lenght:L	Extension lenght:D	Load per pair: kg	"A"	"B"	"C"
DTS4024.0200	200	200	270	50	-	-
DTS4024.0250	250	250	280	50	-	50
DTS4024.0300	300	300	290	50	-	100
DTS4024.0350	350	350	300	50	-	150
DTS4024.0400	400	400	310	50	-	200
DTS4024.0450	450	450	320	50	-	250
DTS4024.0500	500	500	330	50	-	300
DTS4024.0550	550	550	350	50	150	-
DTS4024.0600	600	600	340	50	175	-
DTS4024.0650	650	650	320	50	200	-
DTS4024.0700	700	700	300	50	225	-
DTS4024.0750	750	750	290	50	250	-
DTS4024.0800	800	800	280	50	275	-
DTS4024.0850	850	850	270	50	300	-
DTS4024.0900	900	900	250	50	325	-
DTS4024.0950	950	950	230	50	350	-
DTS4024.1000	1000	1000	220	50	375	-
DTS4024.1050	1050	1050	210	50	400	-
DTS4024.1100	1100	1100	200	50	425	-
DTS4024.1150	1150	1150	190	50	450	-
DTS4024.1200	1200	1200	180	50	475	-
DTS4024.1250	1250	1250	170	50	500	-
DTS4024.1300	1300	1300	160	50	525	-
DTS4024.1350	1350	1350	155	50	550	-
DTS4024.1400	1400	1400	150	50	575	-
DTS4024.1450	1450	1450	145	50	600	-
DTS4024.1500	1500	1500	140	50	625	-
DTS4024.1550	1550	1550	130	50	650	-
DTS4024.1600	1600	1600	120	50	675	-
DTS4024.1650	1650	1650	110	50	700	-
DTS4024.1700	1700	1700	100	100	650	-
DTS4024.1750	1750	1750	90	100	675	-
DTS4024.1800	1800	1800	80	100	700	-
DTS4024.1850	1850	1850	70	100	725	-
DTS4024.1900	1900	1900	60	100	750	-
DTS4024.1950	1950	1950	50	100	775	-
DTS40242000	2000	2000	40	100	800	-

Material:All steel parts.

Beams:Cold drawn carbon steel C45E+C, - EN 10277, milled raceways.

Ball cages:Zinc plated sheet steel.

Ball bearings:Chromed C85,G100: DIN 5401.

End Bolts: ASTM A307.

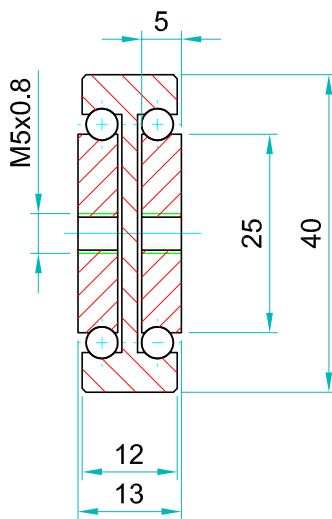
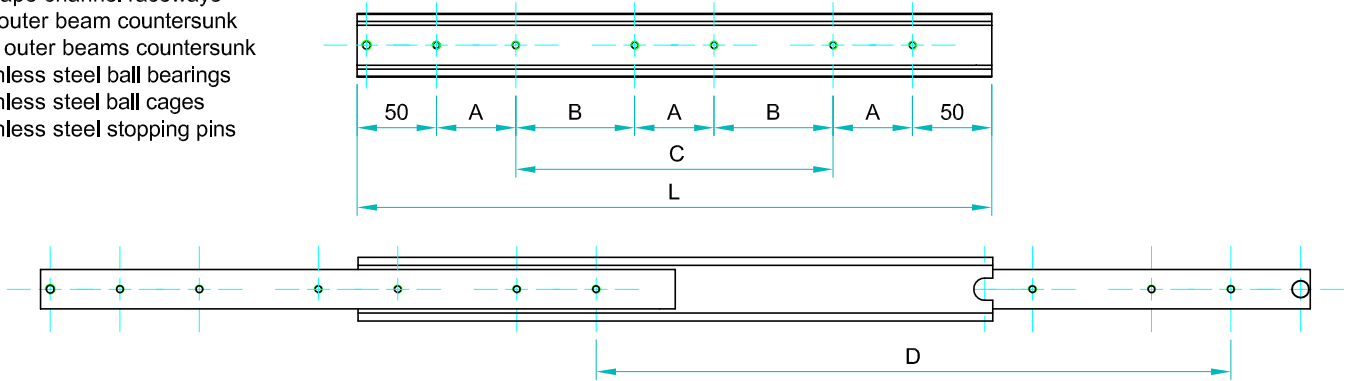
Steel surface protection:Electrolytic alkaline Zinc coating 8-12 microns testet in salt chamber 900 hours without white rast.

Maximum temperature:We recommend -40 to +200°C with low/high-temp lubrication and free movement to allow for steel expansion.

Note: The slide opening and the hole pattern, can be customized according customer's requirements.

Options:

- "V" - V shape channel raceways
- "F" - one outer beam countersunk
- "FF" - both outer beams countersunk
- "SB" - stainless steel ball bearings
- "SC" - stainless steel ball cages
- "SA" - stainless steel stopping pins and bolts



We recommend use the major axis.
Do not dismantle the slide !
The maximum safe load is given for a fully extended pair of slides, mounted on the major axis with a load spread uniformly along the inner beam. Flat mounted slide load capacities are reduced between 60-80%

Type: DTS-45				Hole pattern		
Article number	Instalacion lenght: L	Extension lenght: D	Load per pair: kg	"A"	"B"	"C"
DTS4513.0150	150	150	90	50	-	-
DTS4513.0200	200	200	107	50	-	-
DTS4513.0250	250	250	114	50	-	50
DTS4513.0300	300	300	125	50	-	100
DTS4513.0350	350	350	136	50	-	150
DTS4513.0400	400	400	147	50	-	200
DTS4513.0450	450	450	158	50	-	250
DTS4513.0500	500	500	164	50		300
DTS4513.0550	550	550	166	50	150	-
DTS4513.0600	600	600	160	50	175	-
DTS4513.0650	650	650	155	50	200	-
DTS4513.0700	700	700	150	50	225	-
DTS4513.0750	750	750	140	50	250	-
DTS4513.0800	800	800	125	50	275	-
DTS4513.0850	850	850	110	50	300	-
DTS4513.0900	900	900	98	50	325	-
DTS4513.0950	950	950	90	50	350	-
DTS4513.1000	1000	1000	80	50	375	-

Material:All steel parts.

Beams:Cold drawn carbon steel C45E+C, - EN 10277, milled raceways.

Ball cages:Zinc plated sheet steel.

Ball bearings:Chromed C85,G100: DIN 5401.

End Bolts: ASTM A307.

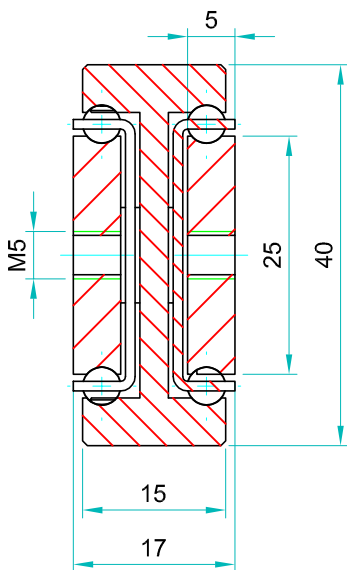
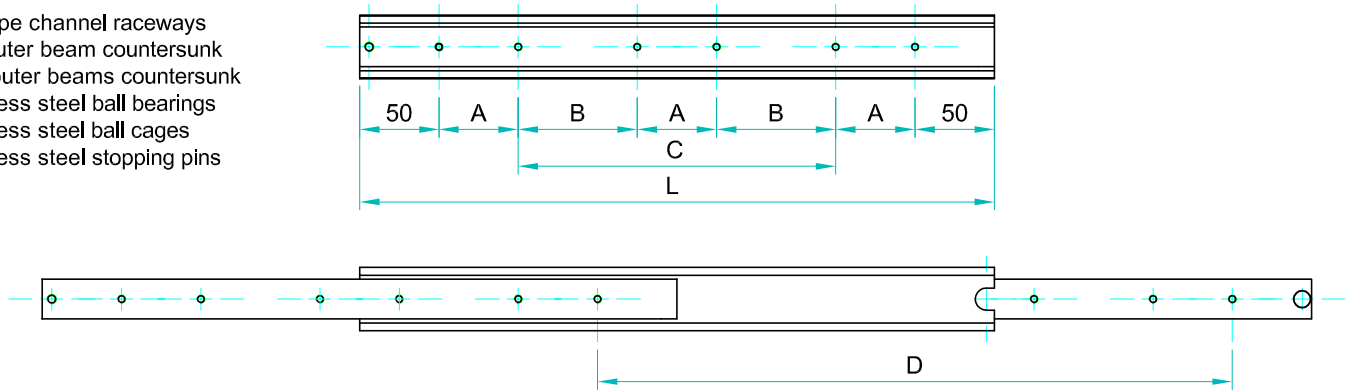
Steel surface protection:Electrolytic alkaline Zinc coating 8-12 microns testet in salt chamber 900 hours without white rast.

Maximum temperature:We recommend -40 to +200°C with low/high-temp lubrication and free movement to allow for steel expansion.

Note: The slide opening and the hole pattern, can be customized according customer's requirements.

Options:

- "V" - V shape channel raceways
- "F" - one outer beam countersunk
- "FF"- both outer beams countersunk
- "SB"- stainless steel ball bearings
- "SC"- stainless steel ball cages
- "SA"- stainless steel stopping pins and bolts



We recommend use the major axis.
Do not dismantle the slide !
The maximum safe load is given for a fully extended pair of slides, mounted on the major axis with a load spread uniformly along the inner beam. Flat mounted slide load capacities are reduced between 60-80%

Type: DTS-48				Hole pattern		
Article number	Instalacion lenght: L	Extension lenght: D	Load per pair: kg	"A"	"B"	"C"
DTS4817.0150	150	150	90	50	-	-
DTS4817.0200	200	200	107	50	-	-
DTS4817.0250	250	250	114	50	-	50
DTS4817.0300	300	300	125	50	-	100
DTS4817.0350	350	350	136	50	-	150
DTS4817.0400	400	400	147	50	-	200
DTS4817.0450	450	450	158	50	-	250
DTS4817.0500	500	500	164	50	-	300
DTS4817.0550	550	550	166	50	150	-
DTS4817.0600	600	600	160	50	175	-
DTS4817.0650	650	650	155	50	200	-
DTS4817.0700	700	700	150	50	225	-
DTS4817.0750	750	750	140	50	250	-
DTS4817.0800	800	800	125	50	275	-
DTS4817.0850	850	850	110	50	300	-
DTS4817.0900	900	900	98	50	325	-
DTS4817.0950	950	950	90	50	350	-
DTS4817.1000	1000	1000	80	50	375	-

Material:All steel parts.

Beams:Cold drawn carbon steel C45E+C, - EN 10277, milled raceways.

Ball cages:Zinc plated sheet steel.

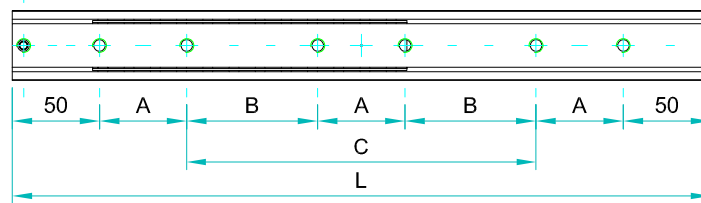
Ball bearings:Chromed C85,G100: DIN 5401.

End Bolts: ASTM A307.

Steel surface protection:Electrolytic alkaline Zinc coating 8-12 microns testet in salt chamber 900 hours without white rast.

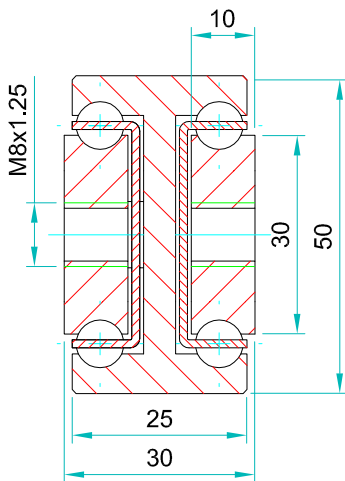
Maximum temperature:We recommend -40 to +200°C with low/high-temp lubrication and free movement to allow for steel expansion.

Note: The slide opening and the hole pattern, can be customized according customer's requirements.



Options:

- "V" - V shape channel raceways
- "F" - one outer beam countersunk
- "FF"- both outer beams countersunk
- "SB"- stainless steel ball bearings
- "SC"- stainless steel ball cages
- "SA"- stainless steel stopping pins and bolts



We recommend use the major axis.
Do not dismantle the slide !
The maximum safe load is given for a fully extended pair of slides, mounted on the major axis with a load spread uniformly along the inner beam. Flat mounted slide load capacities are reduced between 60-80%

Type: DTS-50				Hole pattern		
Article number	Instalacion lenght:L	Extension lenght:D	Load per pair: kg	"A"	"B"	"C"
DTS5030.0200	200	200	340	50	-	-
DTS5030.0250	250	250	350	50	-	50
DTS5030.0300	300	300	360	50	-	100
DTS5030.0350	350	350	370	50	-	150
DTS5030.0400	400	400	380	50	-	200
DTS5030.0450	450	450	390	50	-	250
DTS5030.0500	500	500	400	50	-	300
DTS5030.0550	550	550	410	50	150	-
DTS5030.0600	600	600	420	50	175	-
DTS5030.0650	650	650	410	50	200	-
DTS5030.0700	700	700	400	50	225	-
DTS5030.0750	750	750	390	50	250	-
DTS5030.0800	800	800	380	50	275	-
DTS5030.0850	850	850	370	50	300	-
DTS5030.0900	900	900	360	50	325	-
DTS5030.0950	950	950	350	50	350	-
DTS5030.1000	1000	1000	340	50	375	-
DTS5030.1050	1050	1050	330	50	400	-
DTS5030.1100	1100	1100	320	50	425	-
DTS5030.1150	1150	1150	310	50	450	-
DTS5030.1200	1200	1200	290	50	475	-
DTS5030.1250	1250	1250	280	50	500	-
DTS5030.1300	1300	1300	270	50	525	-
DTS5030.1350	1350	1350	260	50	550	-
DTS5030.1400	1400	1400	250	50	575	-
DTS5030.1450	1450	1450	230	50	600	-
DTS5030.1500	1500	1500	200	50	625	-
DTS5030.1550	1550	1550	190	50	650	-
DTS5030.1600	1600	1600	180	50	675	-
DTS5030.1650	1650	1650	170	50	700	-
DTS5030.1700	1700	1700	160	100	650	-
DTS5030.1750	1750	1750	150	100	675	-
DTS5030.1800	1800	1800	140	100	700	-
DTS5030.1850	1850	1850	130	100	725	-
DTS5030.1900	1900	1900	120	100	750	-
DTS5030.1950	1950	1950	110	100	775	-
DTS50302000	2000	2000	100	100	800	-

Material:All steel parts.

Beams:Cold drawn carbon steel C45E+C, - EN 10277, milled raceways.

Ball cages:Zinc plated sheet steel.

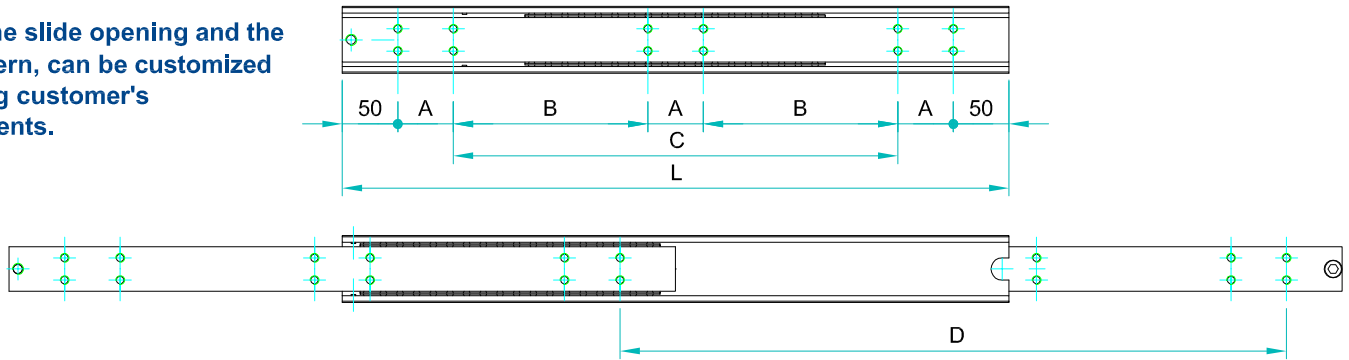
Ball bearings:Chromed C85,G100: DIN 5401.

End Bolts: ASTM A307.

Steel surface protection:Electrolytic alkaline Zinc coating 8-12 microns testet in salt chamber 900 hours without white rast.

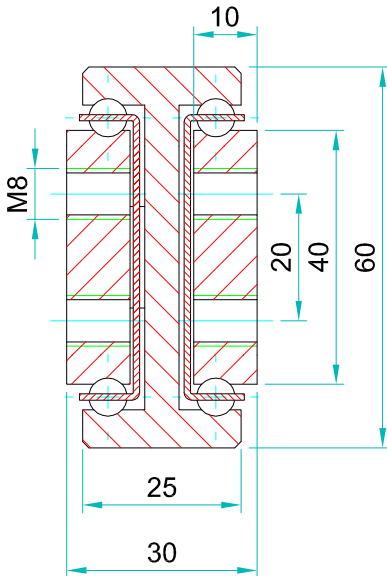
Maximum temperature:We recommend -40 to +200°C with low/high-temp lubrication and free movement to allow for steel expansion.

Note: The slide opening and the hole pattern, can be customized according customer's requirements.



Options:

- "V" - V shape channel raceways
- "F" - one outer beam countersunk
- "FF"- both outer beams countersunk
- "SB"- stainless steel ball bearings
- "SC"- stainless steel ball cages
- "SA"- stainless steel stopping pins and bolts



We recommend use the major axis.
Do not dismantle the slide !
The maximum safe load is given for a fully extended pair of slides, mounted on the major axis with a load spread uniformly along the inner beam. Flat mounted slide load capacities are reduced between 60-80%

Type:DTS-60				Hole pattern		
Article number	Instalacion lenght:L	Extension lenght:D	Load per pair: kg	"A"	"B"	"C"
DTS6030.0200	200	200	450	50	-	-
DTS6030.0250	250	250	470	50	-	50
DTS6030.0300	300	300	480	50	-	100
DTS6030.0350	350	350	490	50	-	150
DTS6030.0400	400	400	500	50	-	200
DTS6030.0450	450	450	520	50	-	250
DTS6030.0500	500	500	530	50	-	300
DTS6030.0550	550	550	550	50	-	350
DTS6030.0600	600	600	560	50	-	400
DTS6030.0650	650	650	570	50	200	-
DTS6030.0700	700	700	580	50	225	-
DTS6030.0750	750	750	590	50	250	-
DTS6030.0800	800	800	600	50	275	-
DTS6030.0850	850	850	590	50	300	-
DTS6030.0900	900	900	580	50	325	-
DTS6030.0950	950	950	570	50	350	-
DTS6030.1000	1000	1000	560	50	375	-
DTS6030.1050	1050	1050	540	50	400	-
DTS6030.1100	1100	1100	520	50	425	-
DTS6030.1150	1150	1150	510	50	450	-
DTS6030.1200	1200	1200	500	50	475	-
DTS6030.1250	1250	1250	480	50	500	-
DTS6030.1300	1300	1300	460	50	525	-
DTS6030.1350	1350	1350	440	50	550	-
DTS6030.1400	1400	1400	420	50	575	-
DTS6030.1450	1450	1450	400	50	600	-
DTS6030.1500	1500	1500	380	50	625	-
DTS6030.1550	1550	1550	350	50	650	-
DTS6030.1600	1600	1600	330	50	675	-
DTS6030.1650	1650	1650	310	50	700	-
DTS6030.1700	1700	1700	290	100	650	-
DTS6030.1750	1750	1750	280	100	675	-
DTS6030.1800	1800	1800	260	100	700	-
DTS6030.1850	1850	1850	240	100	725	-
DTS6030.1900	1900	1900	220	100	750	-
DTS6030.1950	1950	1950	200	100	775	-
DTS6030.2000	2000	2000	180	100	800	-

Material:All steel parts.

Beams:Cold drawn carbon steel C45E+C, - EN 10277, milled raceways.

Ball cages:Zinc plated sheet steel.

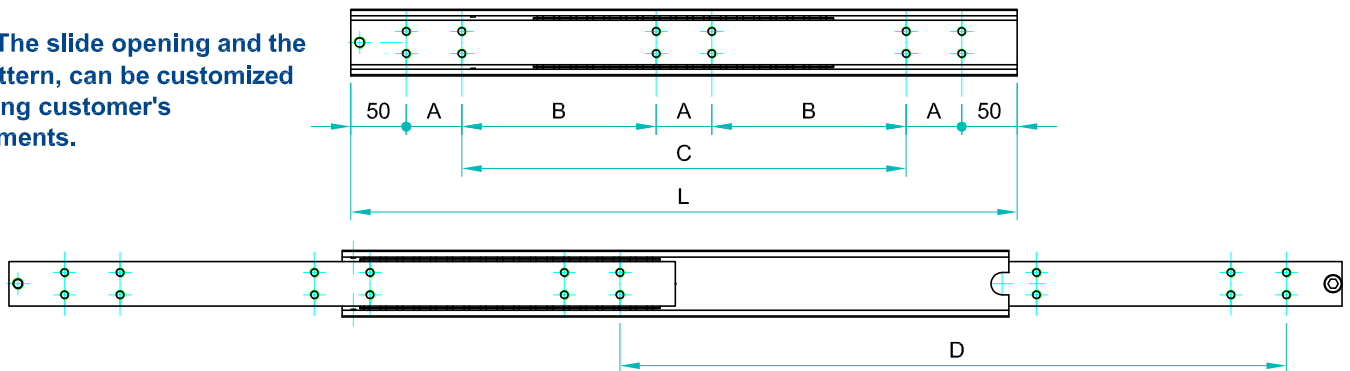
Ball bearings:Chromed C85,G100: DIN 5401.

End Bolts: ASTM A307.

Steel surface protection:Electrolytic alkaline Zinc coating 8-12 microns testet in salt chamber 900 hours without white rast.

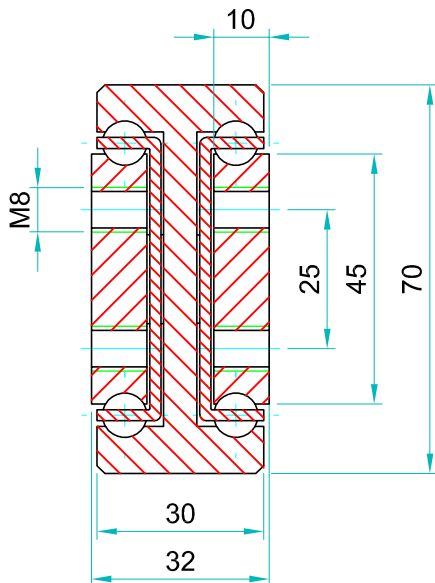
Maximum temperature:We recommend -40 to +200°C with low/high-temp lubrication and free movement to allow for steel expansion.

Note: The slide opening and the hole pattern, can be customized according customer's requirements.



Options:

- "V" - V shape channel raceways
- "F" - one outer beam countersunk
- "FF"- both outer beams countersunk
- "SB"- stainless steel ball bearings
- "SC"- stainless steel ball cages
- "SA"- stainless steel stopping pins and bolts



We recommend use the major axis.
Do not dismantle the slide !
The maximum safe load is given for a fully extended pair of slides, mounted on the major axis with a load spread uniformly along the inner beam. Flat mounted slide load capacities are reduced between 60-80%

Type:DTS-70				Hole pattern		
Article number	Instalacion lenght:L	Extension lenght:D	Load per pair: kg	"A"	"B"	"C"
DTS7032.0200	200	200	540	50	-	-
DTS7032.0250	250	250	560	50	-	50
DTS7032.0300	300	300	580	50	-	100
DTS7032.0350	350	350	600	50	-	150
DTS7032.0400	400	400	620	50	-	200
DTS7032.0450	450	450	640	50	-	250
DTS7032.0500	500	500	650	50	-	300
DTS7032.0550	550	550	660	50	-	350
DTS7032.0600	600	600	670	50	-	400
DTS7032.0650	650	650	680	50	200	-
DTS7032.0700	700	700	690	50	225	-
DTS7032.0750	750	750	695	50	250	-
DTS7032.0800	800	800	700	50	275	-
DTS7032.0850	850	850	695	50	300	-
DTS7032.0900	900	900	690	50	325	-
DTS7032.0950	950	950	685	50	350	-
DTS7032.1000	1000	1000	680	50	375	-
DTS7032.1050	1050	1050	660	50	400	-
DTS7032.1100	1100	1100	650	50	425	-
DTS7032.1150	1150	1150	630	50	450	-
DTS7032.1200	1200	1200	610	50	475	-
DTS7032.1250	1250	1250	600	50	500	-
DTS7032.1300	1300	1300	580	50	525	-
DTS7032.1350	1350	1350	550	50	550	-
DTS7032.1400	1400	1400	520	50	575	-
DTS7032.1450	1450	1450	490	50	600	-
DTS7032.1500	1500	1500	460	50	625	-
DTS7032.1550	1550	1550	420	50	650	-
DTS7032.1600	1600	1600	380	50	675	-
DTS7032.1650	1650	1650	350	50	700	-
DTS7032.1700	1700	1700	340	100	650	-
DTS7032.1750	1750	1750	315	100	675	-
DTS7032.1800	1800	1800	300	100	700	-
DTS7032.1850	1850	1850	280	100	725	-
DTS7032.1900	1900	1900	255	100	750	-
DTS7032.1950	1950	1950	240	100	775	-
DTS7032.2000	2000	2000	220	100	800	-

Material:All steel parts.

Beams:Cold drawn carbon steel C45E+C, - EN 10277, milled raceways.

Ball cages:Zinc plated sheet steel.

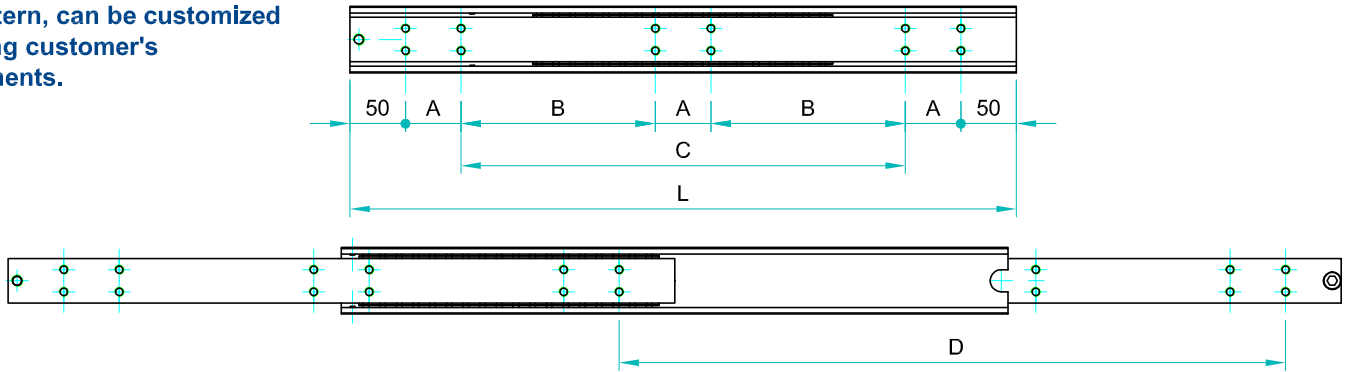
Ball bearings:Chromed C85,G100: DIN 5401.

End Bolts: ASTM A307.

Steel surface protection:Electrolytic alkaline Zinc coating 8-12 microns testet in salt chamber 900 hours without white rast.

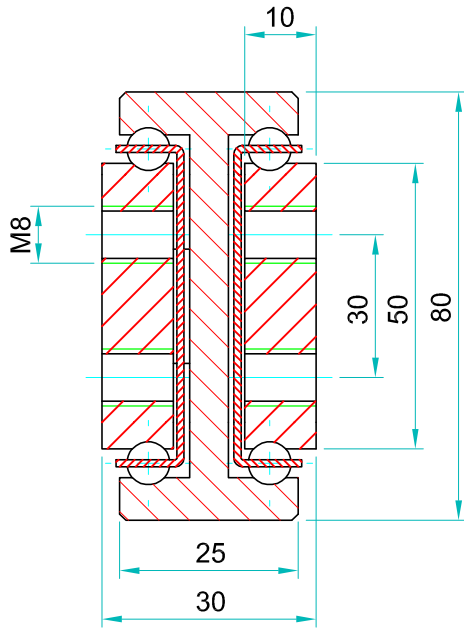
Maximum temperature:We recommend -40 to +200°C with low/high-temp lubrication and free movement to allow for steel expansion.

Note: The slide opening and the hole pattern, can be customized according customer's requirements.



Options:

- "V" - V shape channel raceways
- "F" - one outer beam countersunk
- "FF"- both outer beams countersunk
- "SB"- stainless steel ball bearings
- "SC"- stainless steel ball cages
- "SA"- stainless steel stopping pins and bolts



We recommend use the major axis.
Do not dismantle the slide !
The maximum safe load is given for a fully extended pair of slides, mounted on the major axis with a load spread uniformly along the inner beam. Flat mounted slide load capacities are reduced between 60-80%

Type:DTS-80				Hole pattern		
Article number	Instalacion lenght:L	Extension lenght: D	Load per pair : kg	"A"	"B"	"C"
DTS8030.0200	200	200	600	50	-	-
DTS8030.0250	250	250	620	50	-	50
DTS8030.0300	300	300	640	50	-	100
DTS8030.0350	350	350	680	50	-	150
DTS8030.0400	400	400	720	50	-	200
DTS8030.0450	450	450	760	50	-	250
DTS8030.0500	500	500	790	50	-	300
DTS8030.0550	550	550	830	50	-	350
DTS8030.0600	600	600	850	50	-	400
DTS8030.0650	650	650	860	50	200	-
DTS8030.0700	700	700	865	50	225	-
DTS8030.0750	750	750	875	50	250	-
DTS8030.0800	800	800	880	50	275	-
DTS8030.0850	850	850	870	50	300	-
DTS8030.0900	900	900	860	50	325	-
DTS8030.0950	950	950	850	50	350	-
DTS8030.1000	1000	1000	840	50	375	-
DTS8030.1050	1050	1050	820	50	400	-
DTS8030.1100	1100	1100	800	50	425	-
DTS8030.1150	1150	1150	780	50	450	-
DTS8030.1200	1200	1200	760	50	475	-
DTS8030.1250	1250	1250	740	50	500	-
DTS8030.1300	1300	1300	720	50	525	-
DTS8030.1350	1350	1350	690	50	550	-
DTS8030.1400	1400	1400	660	50	575	-
DTS8030.1450	1450	1450	630	50	600	-
DTS8030.1500	1500	1500	600	50	625	-
DTS8030.1550	1550	1550	580	50	650	-
DTS8030.1600	1600	1600	540	50	675	-

Material:All steel parts.

Beams:Cold drawn carbon steel C45E+C, - EN 10277, milled raceways.

Ball cages:Zinc plated sheet steel.

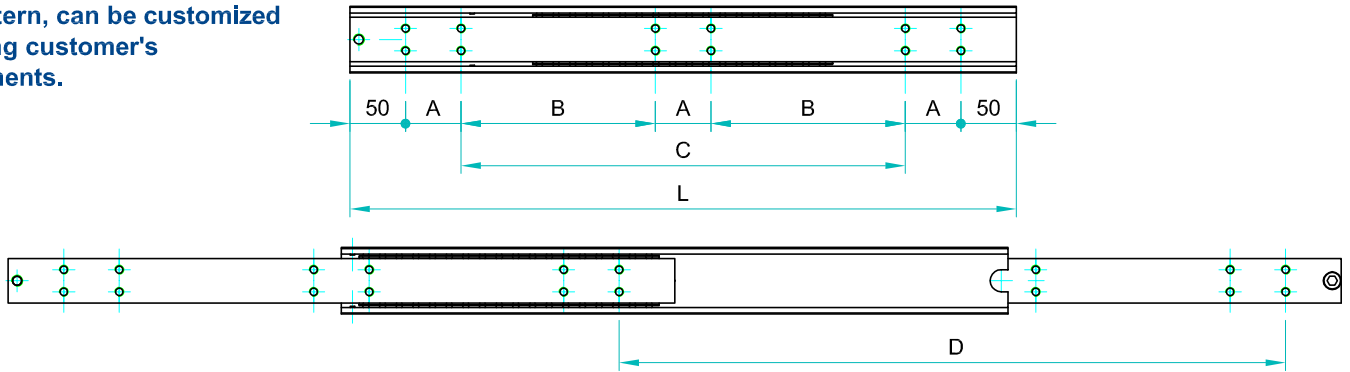
Ball bearings:Chromed C85,G100: DIN 5401.

End Bolts: ASTM A307.

Steel surface protection:Electrolytic alkaline Zinc coating 8-12 microns testet in salt chamber 900 hours without white rast.

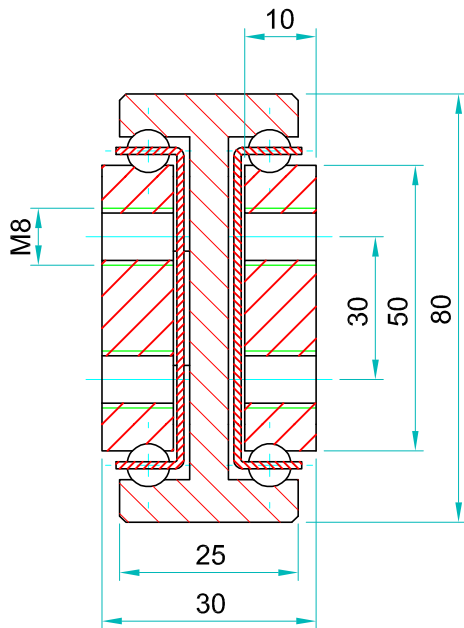
Maximum temperature:We recommend -40 to +200°C with low/high-temp lubrication and free movement to allow for steel expansion.

Note: The slide opening and the hole pattern, can be customized according customer's requirements.



Options:

- "V" - V shape channel raceways
- "F" - one outer beam countersunk
- "FF"- both outer beams countersunk
- "SB"- stainless steel ball bearings
- "SC"- stainless steel ball cages
- "SA"- stainless steel stopping pins and bolts



Type:DTS-80				Hole pattern		
Article number	Instalacion lenght:L	Extension lenght: D	Load per pair : kg	"A"	"B"	"C"
DTS8030.1650	1650	1650	520	50	700	
DTS8030.1700	1700	1700	490	100	650	
DTS8030.1750	1750	1750	450	100	675	
DTS8030.1800	1800	1800	400	100	700	
DTS8030.1850	1850	1850	360	100	725	
DTS8030.1900	1900	1900	320	100	750	
DTS8030.1950	1950	1950	280	100	775	
DTS8030.2000	2000	2000	250	100	800	
DTS8030.2050	2050	2050	230	50	700	
DTS8030.2100	2100	2100	210	100	650	
DTS8030.2150	2150	2150	190	100	675	
DTS8030.2200	2200	2200	170	100	700	
DTS8030.2250	2250	2250	150	100	725	
DTS8030.2300	2300	2300	130	100	750	
DTS8030.2350	2350	2350	110	100	775	
DTS8030.2400	2400	2400	90	100	800	



We recommend use the major axis.
Do not dismantle the slide !
The maximum safe load is given for a fully extended pair of slides, mounted on the major axis with a load spread uniformly along the inner beam. Flat mounted slide load capacities are reduced between 60-80%

Material:All steel parts.

Beams:Cold drawn carbon steel C45E+C, - EN 10277, milled raceways.

Ball cages:Zinc plated sheet steel.

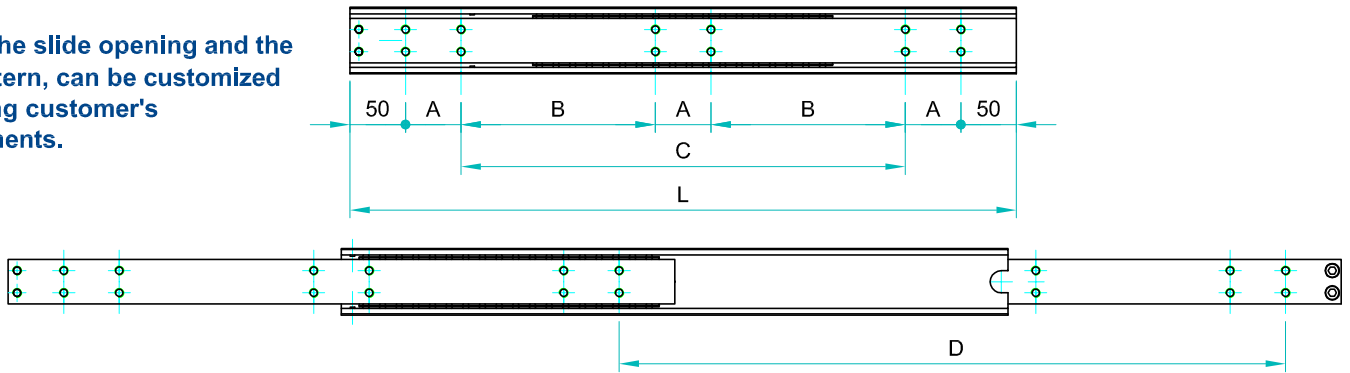
Ball bearings:Chromed C85,G100: DIN 5401.

End Bolts: ASTM A307.

Steel surface protection:Electrolytic alkaline Zinc coating 8-12 microns testet in salt chamber 900 hours without white rast.

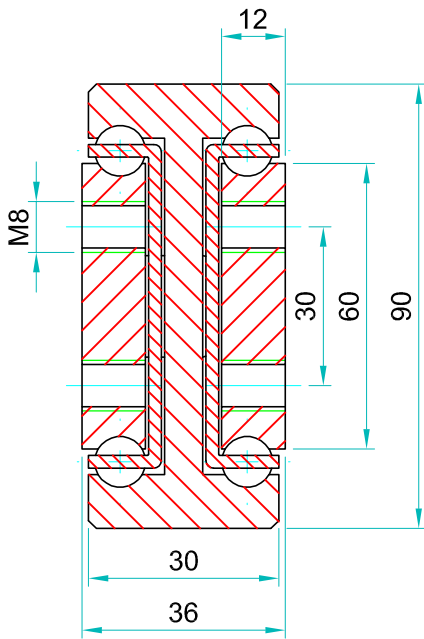
Maximum temperature:We recommend -40 to +200°C with low/high-temp lubrication and free movement to allow for steel expansion.

Note: The slide opening and the hole pattern, can be customized according customer's requirements.



Options:

- "V" - V shape channel raceways
- "F" - one outer beam countersunk
- "FF"- both outer beams countersunk
- "SB"- stainless steel ball bearings
- "SC"- stainless steel ball cages
- "SA"- stainless steel stopping pins and bolts



Type:DTS-90				Hole pattern		
Article number	Instalacion lenght:L	Extension lenght:D	Load per pair : kg	"A"	"B"	"C"
DTS9036.0200	200	200	650	50	-	-
DTS9036.0250	250	250	720	50	-	50
DTS9036.0300	300	300	780	50	-	100
DTS9036.0350	350	350	830	50	-	150
DTS9036.0400	400	400	860	50	-	200
DTS9036.0450	450	450	890	50	-	250
DTS9036.0500	500	500	940	50	-	300
DTS9036.0550	550	550	960	50	-	350
DTS9036.0600	600	600	980	50	-	400
DTS9036.0650	650	650	1000	50	200	-
DTS9036.0700	700	700	1030	50	225	-
DTS9036.0750	750	750	1040	50	250	-
DTS9036.0800	800	800	1050	50	275	-
DTS9036.0850	850	850	1045	50	300	-
DTS9036.0900	900	900	1030	50	325	-
DTS9036.0950	950	950	1015	50	350	-
DTS9036.1000	1000	1000	995	50	375	-
DTS9036.1050	1050	1050	980	50	400	-
DTS9036.1100	1100	1100	950	50	425	-
DTS9036.1150	1150	1150	920	50	450	-
DTS9036.1200	1200	1200	900	50	475	-
DTS9036.1250	1250	1250	880	50	500	-
DTS9036.1300	1300	1300	850	50	525	-
DTS9036.1350	1350	1350	820	50	550	-
DTS9036.1400	1400	1400	790	50	575	-
DTS9036.1450	1450	1450	740	50	600	-
DTS9036.1500	1500	1500	710	50	625	-
DTS9036.1550	1550	1550	690	50	650	-
DTS9036.1600	1600	1600	660	50	675	-



We recommend use the major axis.
Do not dismantle the slide !
The maximum safe load is given for a fully extended pair of slides, mounted on the major axis with a load spread uniformly along the inner beam.
Flat mounted slide load capacities are reduced between 60-80%

Material:All steel parts.

Beams:Cold drawn carbon steel C45E+C, - EN 10277, milled raceways.

Ball cages:Zinc plated sheet steel.

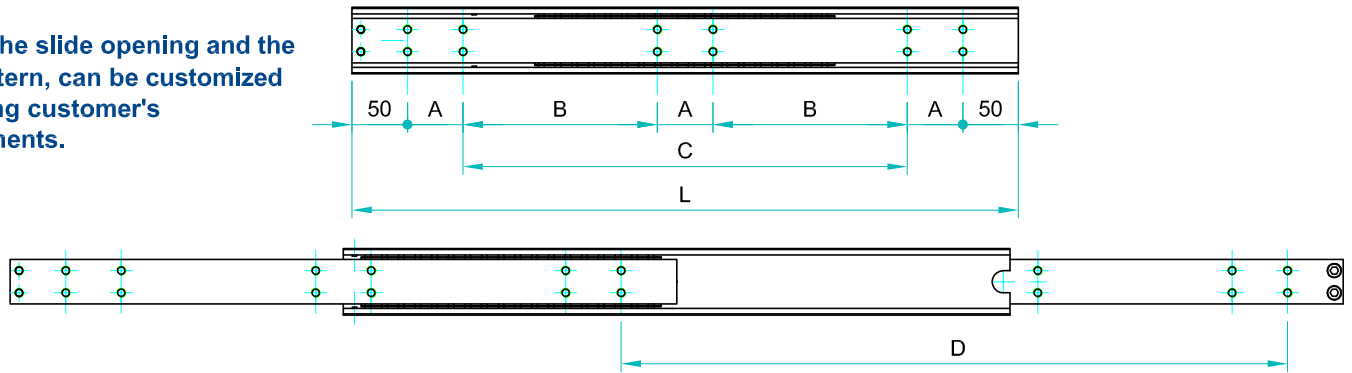
Ball bearings:Chromed C85,G100: DIN 5401.

End Bolts: ASTM A307.

Steel surface protection:Electrolytic alkaline Zinc coating 8-12 microns testet in salt chamber 900 hours without white rast.

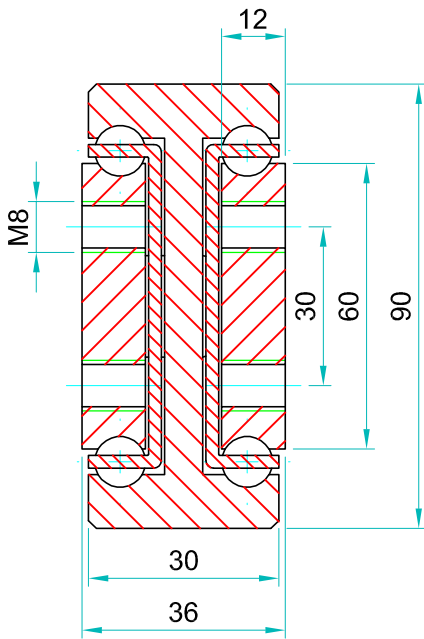
Maximum temperature:We recommend -40 to +200°C with low/high-temp lubrication and free movement to allow for steel expansion.

Note: The slide opening and the hole pattern, can be customized according customer's requirements.



Options:

- "V" - V shape channel raceways
- "F" - one outer beam countersunk
- "FF"- both outer beams countersunk
- "SB"- stainless steel ball bearings
- "SC"- stainless steel ball cages
- "SA"- stainless steel stopping pins and bolts



Type:DTS-90				Hole pattern		
Article number	Instalacion length:L	Extension length:D	Load per pair : kg	"A"	"B"	"C"
DTS9036.1650	1650	1650	640	50	700	
DTS9036.1700	1700	1700	620	100	650	
DTS9036.1750	1750	1750	580	100	675	
DTS9036.1800	1800	1800	540	100	700	
DTS9036.1850	1850	1850	500	100	725	
DTS9036.1900	1900	1900	470	100	750	
DTS9036.1950	1950	1950	440	100	775	
DTS9036.2000	2000	2000	420	100	800	
DTS9036.2050	2050	2050	410	100	825	
DTS9036.2100	2100	2100	400	100	850	
DTS9036.2150	2150	2150	390	100	875	
DTS9036.2200	2200	2200	380	100	900	
DTS9036.2250	2250	2250	370	100	925	
DTS9036.2300	2300	2300	360	100	950	
DTS9036.2350	2350	2350	350	100	975	
DTS9036.2400	2400	2400	340	100	1000	
DTS9036.2450	2450	2450	330	100	1025	
DTS9036.2500	2500	2500	320	100	1050	
DTS9036.2550	2550	2550	310	100	1075	
DTS9036.2600	2600	2600	300	100	1100	
DTS9036.2650	2650	2650	290	100	1125	
DTS9036.2700	2700	2700	280	100	1150	
DTS9036.2750	2750	2750	270	100	1175	
DTS9036.2800	2800	2800	260	100	1200	
DTS9036.2850	2850	2850	250	100	1225	
DTS9036.2900	2900	2900	240	100	1250	
DTS9036.2950	2950	2950	230	100	1275	
DTS9036.3000	3000	3000	220	100	1300	



We recommend use the major axis.
Do not dismantle the slide !
The maximum safe load is given for a fully extended pair of slides, mounted on the major axis with a load spread uniformly along the inner beam. Flat mounted slide load capacities are reduced between 60-80%

Material:All steel parts.

Beams:Cold drawn carbon steel C45E+C, - EN 10277, milled raceways.

Ball cages:Zinc plated sheet steel.

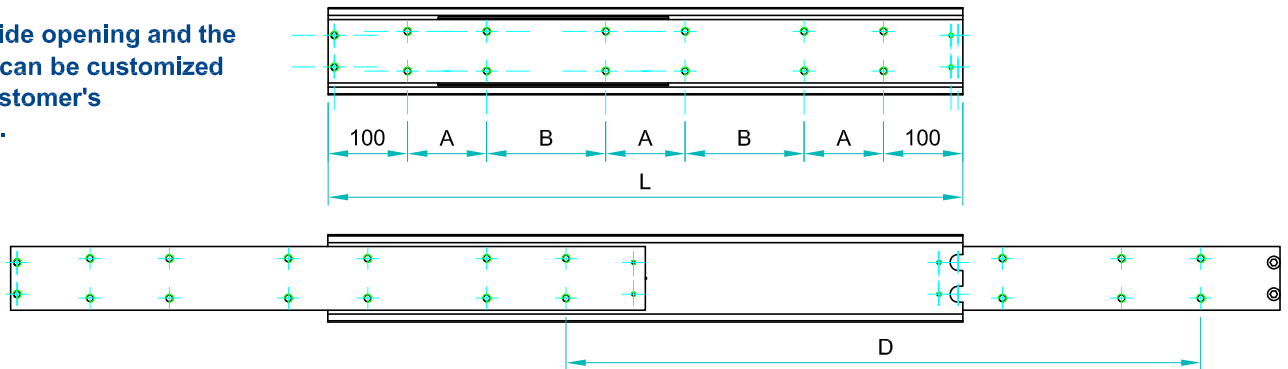
Ball bearings:Chromed C85,G100: DIN 5401.

End Bolts: ASTM A307.

Steel surface protection:Electrolytic alkaline Zinc coating 8-12 microns testet in salt chamber 900 hours without white rast.

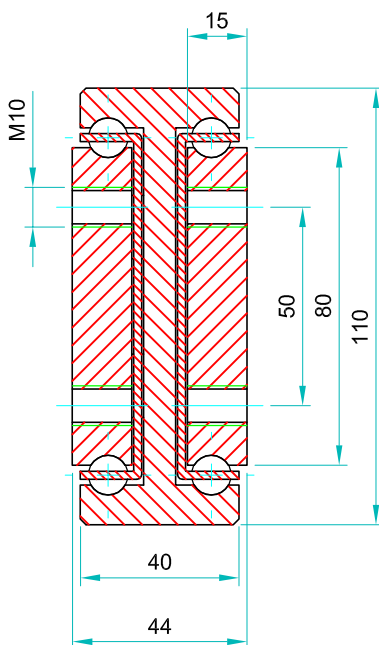
Maximum temperature:We recommend -40 to +200°C with low/high-temp lubrication and free movement to allow for steel expansion.

Note: The slide opening and the hole pattern, can be customized according customer's requirements.



Options:

- "V" - V shape channel raceways
- "F" - one outer beam countersunk
- "FF" - both outer beams countersunk
- "SB" - stainless steel ball bearings
- "SC" - stainless steel ball cages
- "SA" - stainless steel stopping pins and bolts



Type: DTS-110				Hole pattern		
Article number	Instalacion length : L	Extension length : D	Load per pair (kg)	"A"	"B"	"C"
DTS11044.0300	300	300	1430	100	-	
DTS11044.0350	350	350	1485	50	-	50
DTS11044.0400	400	400	1540	50	-	100
DTS11044.0450	450	450	1600	50	-	150
DTS11044.0500	500	500	1650	50	-	200
DTS11044.0550	550	550	1700	50	-	250
DTS11044.0600	600	600	1740	50	-	300
DTS11044.0650	650	650	1780	50	150	-
DTS11044.0700	700	700	1800	50	175	-
DTS11044.0750	750	750	1780	50	200	-
DTS11044.0800	800	800	1760	100	150	-
DTS11044.0850	850	850	1730	100	175	-
DTS11044.0900	900	900	1690	100	200	-
DTS11044.0950	950	950	1660	100	225	-
DTS11044.1000	1000	1000	1630	100	250	-
DTS11044.1050	1050	1050	1600	100	275	-
DTS11044.1100	1100	1100	1560	100	300	-
DTS11044.1150	1150	1150	1530	100	325	-
DTS11044.1200	1200	1200	1500	100	350	-
DTS11044.1250	1250	1250	1470	100	375	-
DTS11044.1300	1300	1300	1440	100	400	-
DTS11044.1350	1350	1350	1400	100	425	-
DTS11044.1400	1400	1400	1360	100	450	-
DTS11044.1450	1450	1450	1320	100	475	-
DTS11044.1500	1500	1500	1280	100	500	-
DTS11044.1550	1550	1550	1240	100	525	-
DTS11044.1600	1600	1600	1200	100	550	-



We recommend use the major axis.
Do not dismantle the slide !
The maximum safe load is given for a fully extended pair of slides, mounted on the major axis with a load spread uniformly along the inner beam. Flat mounted slide load capacities are reduced between 60-80%

Material:All steel parts.

Beams:Cold drawn carbon steel C45E+C, - EN 10277, milled raceways.

Ball cages:Zinc plated sheet steel.

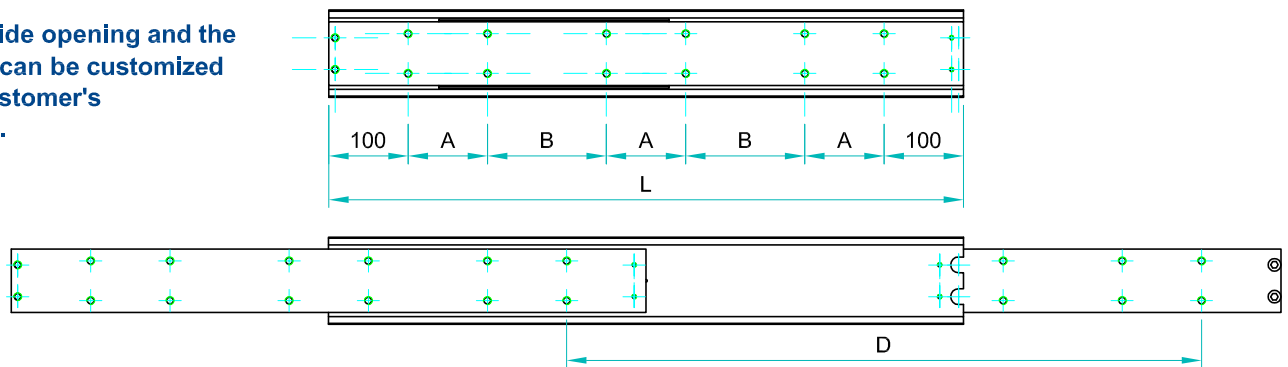
Ball bearings:Chromed C85,G100: DIN 5401.

End Bolts: ASTM A307.

Steel surface protection:Electrolytic alkaline Zinc coating 8-12 microns testet in salt chamber 900 hours without white rast.

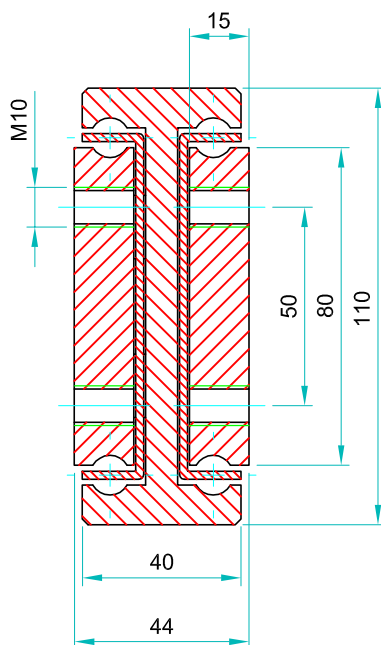
Maximum temperature:We recommend -40 to +200°C with low/high-temp lubrication and free movement to allow for steel expansion.

Note: The slide opening and the hole pattern, can be customized according customer's requirements.



Options:

- "V" - V shape channel raceways
- "F" - one outer beam countersunk
- "FF" - both outer beams countersunk
- "SB" - stainless steel ball bearings
- "SC" - stainless steel ball cages
- "SA" - stainless steel stopping pins and bolts



Type: DTS-110				Hole pattern		
Article number	Instalacion lenght : L	Extension lenght : D	Load per pair (kg)	"A"	"B"	"C"
DTS11044.1650	1650	1650	1160	100	575	
DTS11044.1700	1700	1700	1100	100	600	
DTS11044.1750	1750	1750	1060	100	625	
DTS11044.1800	1800	1800	1000	100	650	
DTS11044.1850	1850	1850	960	100	675	
DTS11044.1900	1900	1900	910	100	700	
DTS11044.1950	1950	1950	860	100	725	
DTS11044.2000	2000	2000	800	100	750	
DTS11044.2100	2100	2100	720	100	800	
DTS11044.2200	2200	2200	680	100	850	
DTS11044.2300	2300	2300	600	100	900	
DTS11044.2400	2400	2400	540	100	950	
DTS11044.2500	2500	2500	480	100	1000	
DTS11044.2600	2600	2600	400	100	1050	
DTS11044.2700	2700	2700	340	100	1100	
DTS11044.2800	2800	2800	280	100	1150	
DTS11044.2900	2900	2900	220	100	1200	
DTS11044.3000	3000	3000	160	100	1250	



We recommend use the major axis.
Do not dismantle the slide !
The maximum safe load is given for a fully extended pair of slides, mounted on the major axis with a load spread uniformly along the inner beam. Flat mounted slide load capacities are reduced between 60-80%

Material:All steel parts.

Beams:Cold drawn carbon steel C45E+C, - EN 10277, milled raceways.

Ball cages:Zinc plated sheet steel.

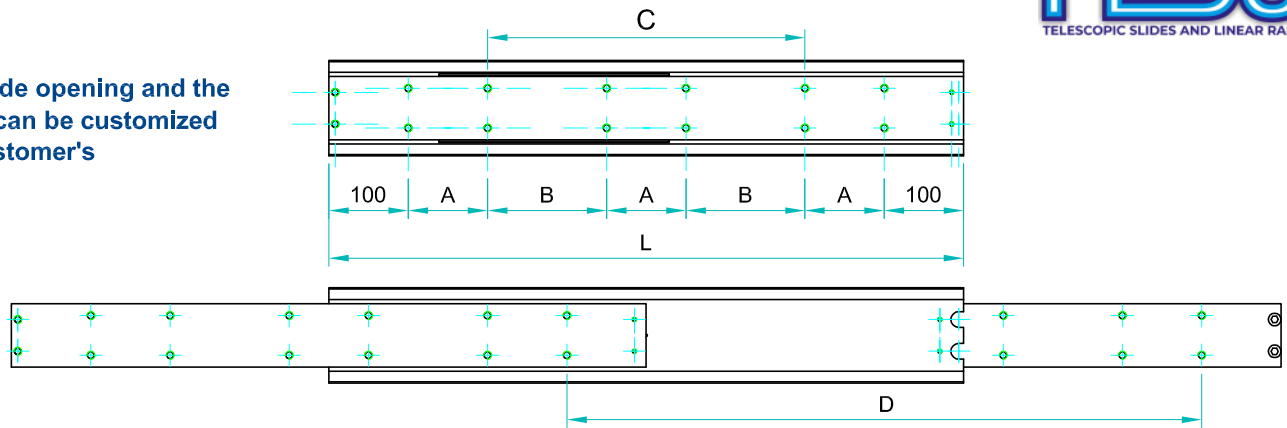
Ball bearings:Chromed C85,G100: DIN 5401.

End Bolts: ASTM A307.

Steel surface protection:Electrolytic alkaline Zinc coating 8-12 microns testet in salt chamber 900 hours without white rast.

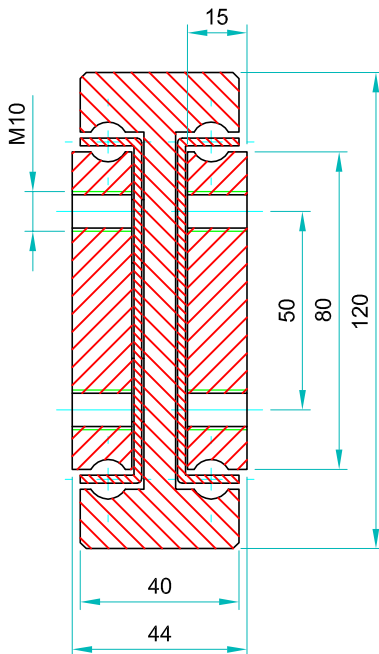
Maximum temperature:We recommend -40 to +200°C with low/high-temp lubrication and free movement to allow for steel expansion.

Note: The slide opening and the hole pattern, can be customized according customer's requirements.



Options:

- "V" - V shape channel raceways
- "F" - one outer beam countersunk
- "FF"- both outer beams countersunk
- "SB"- stainless steel ball bearings
- "SC"- stainless steel ball cages
- "SA"- stainless steel stopping pins and bolts



Type: DTS-120				Hole pattern		
Article number	Instalacion lenght : L	Extension lenght : D	Load per pair (kg)	"A"	"B"	"C"
DTS12044.0300	300	300	1480	100	-	
DTS12044.0350	350	350	1560	50	-	50
DTS12044.0400	400	400	1640	50	-	100
DTS12044.0450	450	450	1720	50	-	150
DTS12044.0500	500	500	1760	50	-	200
DTS12044.0550	550	550	1820	50	-	250
DTS12044.0600	600	600	1850	50	-	300
DTS12044.0650	650	650	1870	50	150	-
DTS12044.0700	700	700	1890	50	175	-
DTS12044.0750	750	750	1860	50	200	-
DTS12044.0800	800	800	1840	100	150	-
DTS12044.0850	850	850	1820	100	175	-
DTS12044.0900	900	900	1790	100	200	-
DTS12044.0950	950	950	1760	100	225	-
DTS12044.1000	1000	1000	1730	100	250	-
DTS12044.1050	1050	1050	1700	100	275	-
DTS12044.1100	1100	1100	1660	100	300	-
DTS12044.1150	1150	1150	1630	100	325	-
DTS12044.1200	1200	1200	1600	100	350	-
DTS12044.1250	1250	1250	1570	100	375	-
DTS12044.1300	1300	1300	1540	100	400	-
DTS12044.1350	1350	1350	1500	100	425	-
DTS12044.1400	1400	1400	1460	100	450	-
DTS12044.1450	1450	1450	1410	100	475	-
DTS12044.1500	1500	1500	1370	100	500	-
DTS12044.1550	1550	1550	1320	100	525	-
DTS12044.1600	1600	1600	1280	100	550	-



We recommend use the major axis.
Do not dismantle the slide !
The maximum safe load is given for a fully extended pair of slides, mounted on the major axis with a load spread uniformly along the inner beam. Flat mounted slide load capacities are reduced between 60-80%

Material:All steel parts.

Beams:Cold drawn carbon steel C45E+C, - EN 10277, milled raceways.

Ball cages:Zinc plated sheet steel.

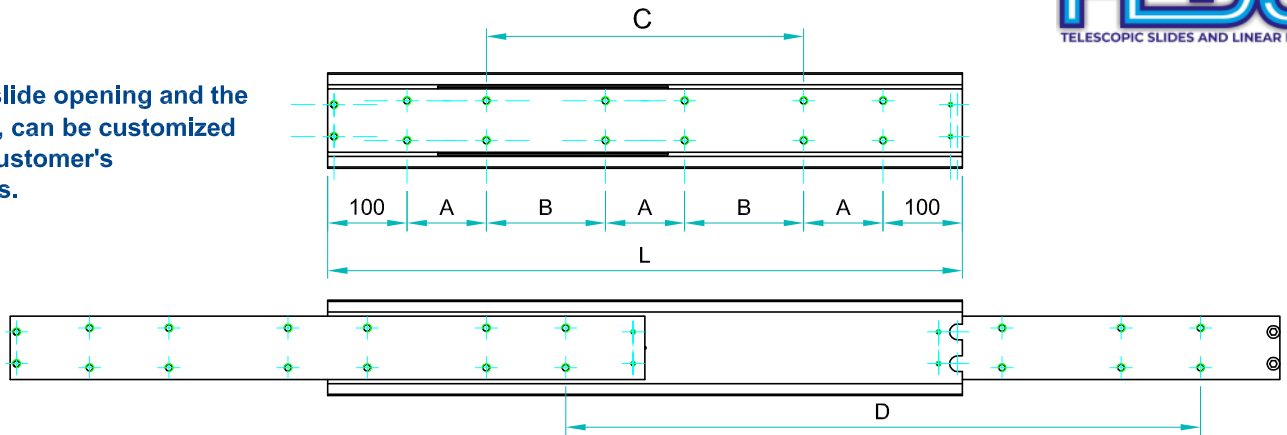
Ball bearings:Chromed C85,G100: DIN 5401.

End Bolts: ASTM A307.

Steel surface protection:Electrolytic alkaline Zinc coating 8-12 microns testet in salt chamber 900 hours without white rast.

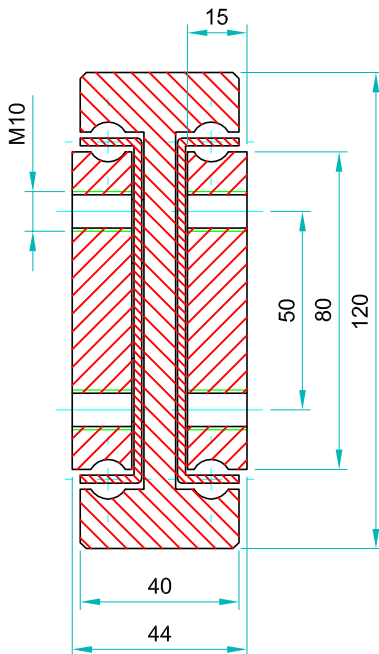
Maximum temperature:We recommend -40 to +200°C with low/high-temp lubrication and free movement to allow for steel expansion.

Note: The slide opening and the hole pattern, can be customized according customer's requirements.



Options:

- "V" - V shape channel raceways
- "F" - one outer beam countersunk
- "FF"- both outer beams countersunk
- "SB"- stainless steel ball bearings
- "SC"- stainless steel ball cages
- "SA"- stainless steel stopping pins and bolts



Type: DTS-120				Hole pattern		
Article number	Instalacion lenght : L	Extension lenght : D	Load per pair (kg)	"A"	"B"	"C"
DTS12044.1650	1650	1650	1230	100	575	
DTS12044.1700	1700	1700	1180	100	600	
DTS12044.1750	1750	1750	1130	100	625	
DTS12044.1800	1800	1800	1080	100	650	
DTS12044.1850	1850	1850	1030	100	675	
DTS12044.1900	1900	1900	980	100	700	
DTS12044.1950	1950	1950	920	100	725	
DTS12044.2000	2000	2000	860	100	750	
DTS12044.2100	2100	2100	800	100	800	
DTS12044.2200	2200	2200	740	100	850	
DTS12044.2300	2300	2300	680	100	900	
DTS12044.2400	2400	2400	620	100	950	
DTS12044.2500	2500	2500	560	100	1000	
DTS12044.2600	2600	2600	500	100	1050	
DTS12044.2700	2700	2700	440	100	900	
DTS12044.2800	2800	2800	380	100	950	
DTS12044.2900	2900	2900	320	100	1000	
DTS12044.3000	3000	3000	260	100	1050	



We recommend use the major axis.
Do not dismantle the slide !
The maximum safe load is given for a fully extended pair of slides, mounted on the major axis with a load spread uniformly along the inner beam. Flat mounted slide load capacities are reduced between 60-80%

Material:All steel parts.

Beams:Cold drawn carbon steel C45E+C, - EN 10277, milled raceways.

Ball cages:Zinc plated sheet steel.

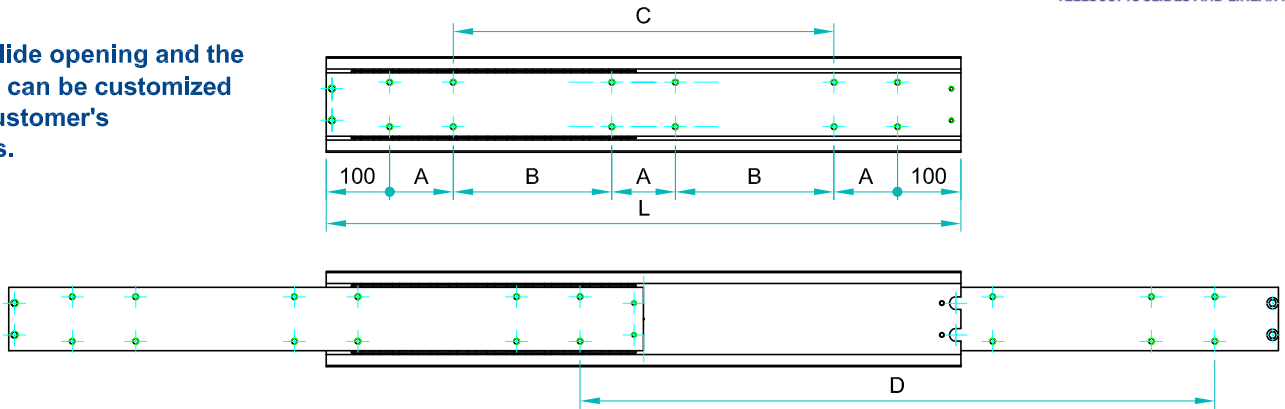
Ball bearings:Chromed C85,G100: DIN 5401.

End Bolts: ASTM A307.

Steel surface protection:Electrolytic alkaline Zinc coating 8-12 microns testet in salt chamber 900 hours without white rast.

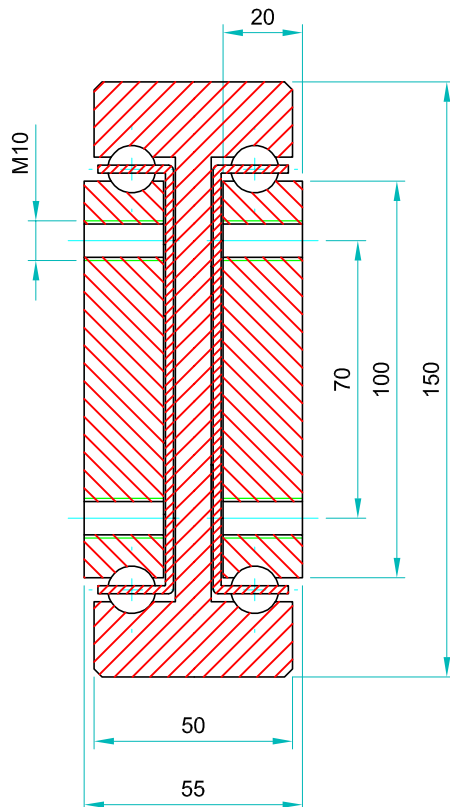
Maximum temperature:We recommend -40 to +200°C with low/high-temp lubrication and free movement to allow for steel expansion.

Note: The slide opening and the hole pattern, can be customized according customer's requirements.



Options:

- "V" - V shape channel raceways
- "F" - one outer beam countersunk
- "FF"- both outer beams countersunk
- "SB"- stainless steel ball bearings
- "SC"- stainless steel ball cages
- "SA"- stainless steel stopping pins and bolts



We recommend use the major axis.
Do not dismantle the slide !
The maximum safe load is given for a fully extended pair of slides, mounted on the major axis with a load spread uniformly along the inner beam. Flat mounted slide load capacities are reduced between 60-80%

Type:DTS-150				Hole pattern		
Article number	Instalacion lenght :L	Extension lenght:D	Load per pair : kg	"A"	"B"	"C"
DTS15055.0300	300	300	1720	100	-	-
DTS15055.0350	350	350	1790	50	-	50
DTS15055.0400	400	400	1860	50	-	100
DTS15055.0450	450	450	1930	50	-	150
DTS15055.0500	500	500	2020	50	-	200
DTS15055.0550	550	550	2100	50	-	250
DTS15055.0600	600	600	2180	50	-	300
DTS15055.0650	650	650	2250	50	150	-
DTS15055.0700	700	700	2300	50	175	-
DTS15055.0750	750	750	2340	50	200	-
DTS15055.0800	800	800	2380	100	150	-
DTS15055.0850	850	850	2410	100	175	-
DTS15055.0900	900	900	2370	100	200	-
DTS15055.0950	950	950	2330	100	225	-
DTS15055.1000	1000	1000	2300	100	250	-
DTS15055.1050	1050	1050	2270	100	275	-
DTS15055.1100	1100	1100	2240	100	300	-
DTS15055.1150	1150	1150	2210	100	325	-
DTS15055.1200	1200	1200	2180	100	350	-
DTS15055.1250	1250	1250	2150	100	375	-
DTS15055.1300	1300	1300	2120	100	400	-
DTS15055.1350	1350	1350	1990	100	425	-
DTS15055.1400	1400	1400	1960	100	450	-
DTS15055.1450	1450	1450	1920	100	475	-
DTS15055.1500	1500	1500	1880	100	500	-
DTS15055.1550	1550	1550	1840	100	525	-
DTS15055.1600	1600	1600	1800	100	550	-

Material:All steel parts.

Beams:Cold drawn carbon steel C45E+C, - EN 10277, milled raceways.

Ball cages:Zinc plated sheet steel.

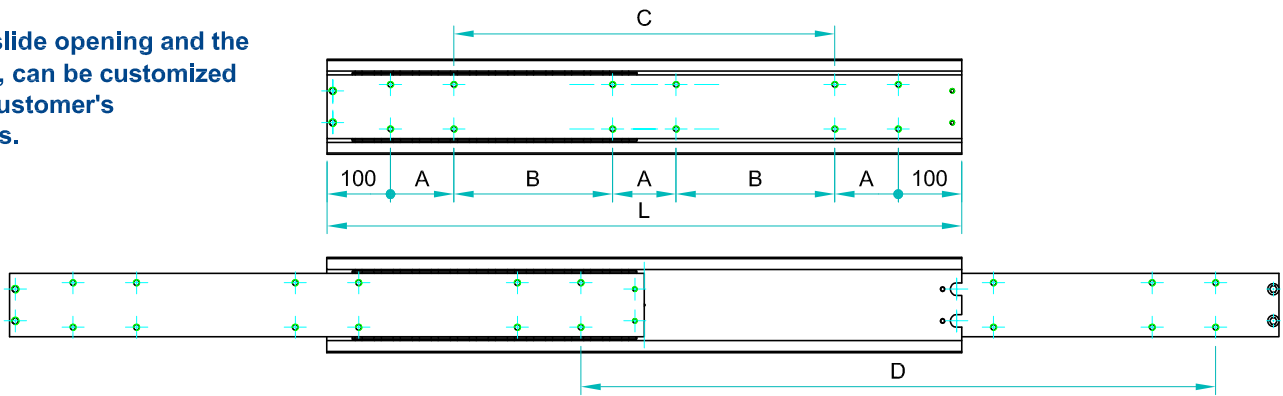
Ball bearings:Chromed C85,G100: DIN 5401.

End Bolts: ASTM A307.

Steel surface protection:Electrolytic alkaline Zinc coating 8-12 microns testet in salt chamber 900 hours without white rast.

Maximum temperature:We recommend -40 to +200°C with low/high-temp lubrication and free movement to allow for steel expansion.

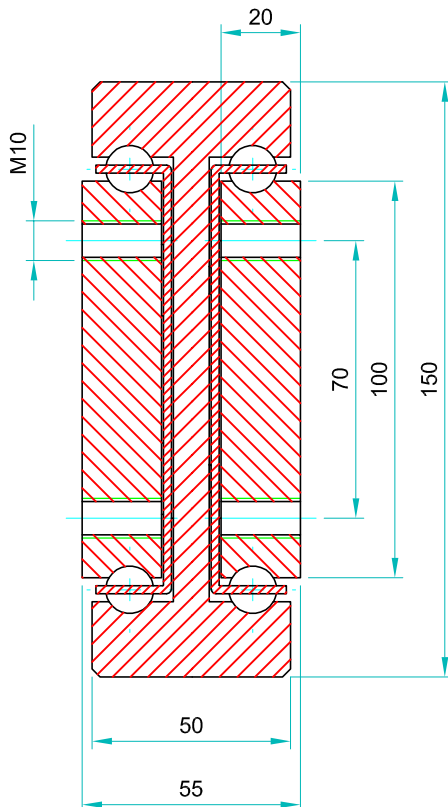
Note: The slide opening and the hole pattern, can be customized according customer's requirements.



Options:

- "V" - V shape channel raceways
- "F" - one outer beam countersunk
- "FF"- both outer beams countersunk
- "SB"- stainless steel ball bearings
- "SC"- stainless steel ball cages
- "SA"- stainless steel stopping pins and bolts

Type:DTS-150				Hole pattern		
Article number	Instalacion lenght :L	Extension lenght:D	Load per pair : kg	"A"	"B"	"C"
DTS15055.1650	1650	1650	1760	100	575	-
DTS15055.1700	1700	1700	1715	100	600	-
DTS15055.1750	1750	1750	1660	100	625	-
DTS15055.1800	1800	1800	1510	100	650	-
DTS15055.1850	1850	1850	1550	100	675	-
DTS15055.1900	1900	1900	1445	100	700	-
DTS15055.1950	1950	1950	1360	100	725	-
DTS15055.2000	2000	2000	1280	100	750	-
DTS15055.2100	2100	2100	1200	100	800	-
DTS15055.2200	2200	2200	1120	100	850	-
DTS15055.2300	2300	2300	1040	100	900	-
DTS15055.2400	2400	2400	960	100	950	-
DTS15055.2500	2500	2500	880	100	1000	-
DTS15055.2600	2600	2600	800	100	1050	-
DTS15055.2700	2700	2700	680	100	1100	-
DTS15055.2800	2800	2800	580	100	1150	-
DTS15055.2900	2900	2900	480	100	1200	-
DTS15055.3000	3000	3000	380	100	1250	-



We recommend use the major axis.
 Do not dismantle the slide !
 The maximum safe load is given for a fully extended pair of slides, mounted on the major axis with a load spread uniformly along the inner beam. Flat mounted slide load capacities are reduced between 60-80%

Material:All steel parts.

Beams:Cold drawn carbon steel C45E+C, - EN 10277, milled raceways.

Ball cages:Zinc plated sheet steel.

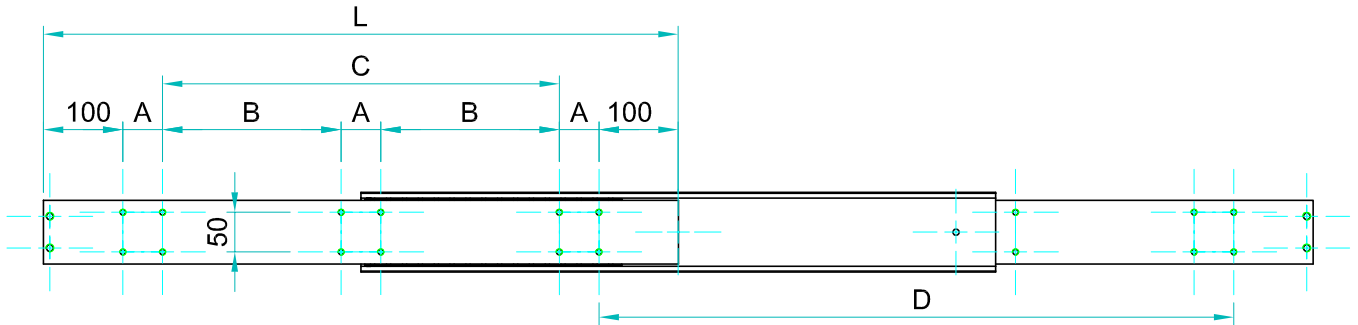
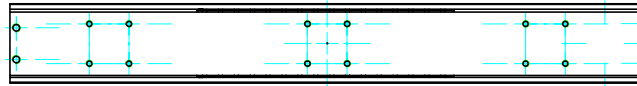
Ball bearings:Chromed C85,G100: DIN 5401.

End Bolts: ASTM A307.

Steel surface protection:Electrolytic alkaline Zinc coating 8-12 microns tested in salt chamber 900 hours without white rust.

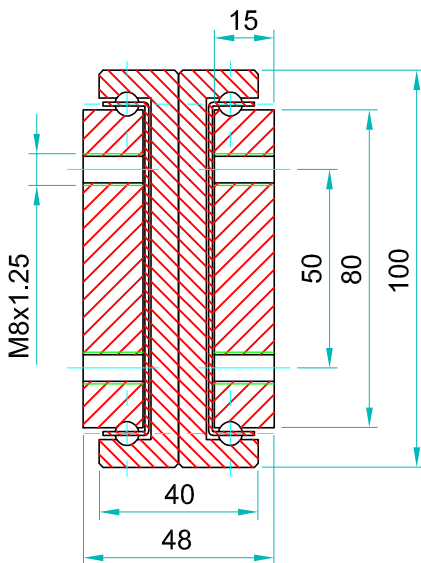
Maximum temperature:We recommend -40 to +200°C with low/high-temp lubrication and free movement to allow for steel expansion.

Note: The slide opening and the hole pattern, can be customized according customer's requirements.



Options:

- "V" - V shape channel raceways
- "F" - one outer beam countersunk
- "FF"- both outer beams countersunk
- "SB"- stainless steel ball bearings
- "SC"- stainless steel ball cages
- "SA"- stainless steel stopping pins and bolts



We recommend use the major axis.
Do not dismantle the slide !
The maximum safe load is given for a fully extended pair of slides, mounted on the major axis with a load spread uniformly along the inner beam. Flat mounted slide load capacities are reduced between 60-80%

Type: DOWS-100				Hole pattern		
Article number	Instalacion lenght : L	Extension lenght: D	Load per pair (kg)	"A"	"B"	"C"
DOWS10048.0300	300	300	1000	50	-	
DOWS10048.0350	350	350	1030	50	-	50
DOWS10048.0400	400	400	1070	50	-	100
DOWS10048.0450	450	450	1130	50	-	150
DOWS10048.0500	500	500	1180	50	-	200
DOWS10048.0550	550	550	1230	50	-	250
DOWS10048.0600	600	600	1290	50	-	300
DOWS10048.0650	650	650	1310	50	150	-
DOWS10048.0700	700	700	1340	50	175	-
DOWS10048.0750	750	750	1360	50	200	-
DOWS10048.0800	800	800	1380	100	150	-
DOWS10048.0850	850	850	1365	100	175	-
DOWS10048.0900	900	900	1350	100	200	-
DOWS10048.0950	950	950	1330	100	225	-
DOWS10048.1000	1000	1000	1300	100	250	-
DOWS10048.1050	1050	1050	1270	100	275	-
DOWS10048.1100	1100	1100	1240	100	300	-
DOWS10048.1150	1150	1150	1220	100	325	-
DOWS10048.1200	1200	1200	1180	100	350	-
DOWS10048.1250	1250	1250	1160	100	375	-
DOWS10048.1300	1300	1300	1140	100	400	-
DOWS10048.1350	1350	1350	1120	100	425	-
DOWS10048.1400	1400	1400	1100	100	450	-
DOWS10048.1450	1450	1450	1080	100	475	-
DOWS10048.1500	1500	1500	1060	100	500	-
DOWS10048.1550	1550	1550	1040	100	525	-
DOWS10048.1600	1600	1600	1010	100	550	-

Material:All steel parts.

Beams:Cold drawn carbon steel C45E+C, - EN 10277, milled raceways.

Ball cages:Zinc plated sheet steel.

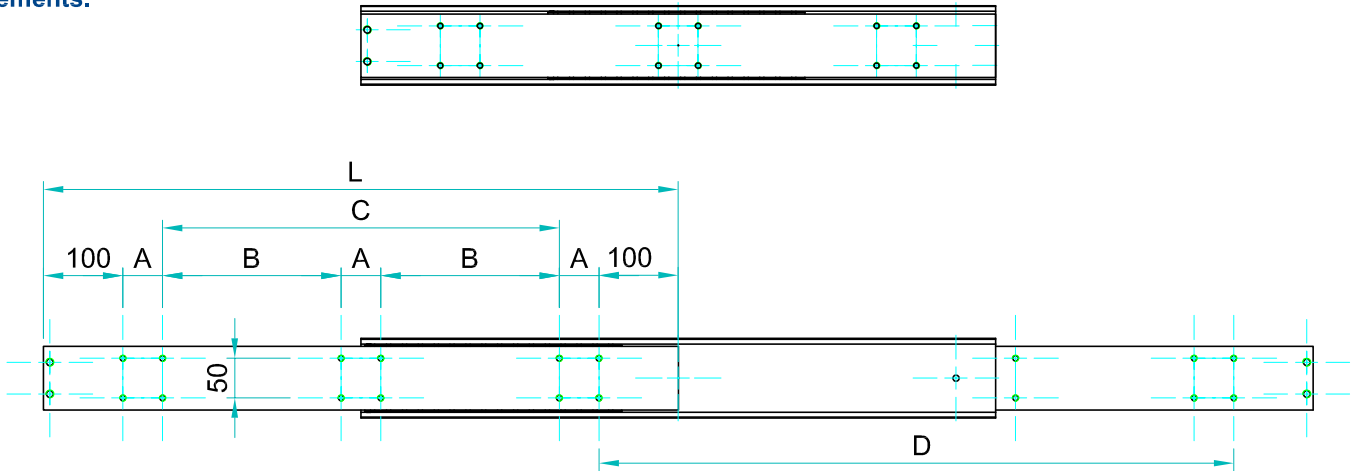
Ball bearings:Chromed C85,G100: DIN 5401.

End Bolts: ASTM A307.

Steel surface protection:Electrolytic alkaline Zinc coating 8-12 microns testet in salt chamber 900 hours without white rast.

Maximum temperature:We recommend -40 to +200°C with low/high-temp lubrication and free movement to allow for steel expansion.

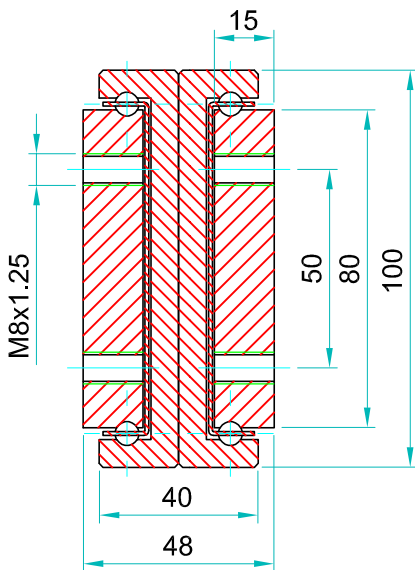
Note: The slide opening and the hole pattern, can be customized according customer's requirements.



Options:

- "V" - V shape channel raceways
- "F" - one outer beam countersunk
- "FF"- both outer beams countersunk
- "SB"- stainless steel ball bearings
- "SC"- tainless steel ball cages
- "SA"- stainless steel stopping pins and bolts

Type: DOWS-100				Hole pattern		
Article number	Instalacion lenght : L	Extension lenght: D	Load per pair (kg)	"A"	"B"	"C"
DOWS10048.1650	1650	1650	1040	100	575	-
DOWS10048.1700	1700	1700	1010	100	600	-
DOWS10048.1750	1750	1750	980	100	625	-
DOWS10048.1800	1800	1800	950	100	650	-
DOWS10048.1850	1850	1850	920	100	675	-
DOWS10048.1900	1900	1900	880	100	700	-
DOWS10048.1950	1950	1950	840	100	725	-
DOWS10048.2000	2000	2000	800	100	750	-
DOWS10048.2050	2050	2050	760	100	775	-
DOWS10048.2100	2100	2100	720	100	800	-
DOWS10048.2150	2150	2150	680	100	825	-
DOWS10048.2200	2200	2200	660	100	850	-
DOWS10048.2250	2250	2250	630	100	875	-
DOWS10048.2300	2300	2300	600	100	900	-
DOWS10048.2350	2350	2350	570	100	925	-
DOWS10048.2400	2400	2400	540	100	950	-
DOWS10048.2450	2450	2450	510	100	975	-
DOWS10048.2500	2500	2500	480	100	1000	-
DOWS10048.2550	2550	2550	460	100	1025	-
DOWS10048.2600	2600	2600	440	100	1050	-
DOWS10048.2700	2700	2700	420	100	1100	-
DOWS10048.2800	2800	2800	400	100	1150	-
DOWS10048.2900	2900	2900	380	100	1200	-
DOWS10048.3000	3000	3000	360	100	1250	-



We recommend use the major axis.
Do not dismantle the slide !
The maximum safe load is given for a fully extended pair of slides, mounted on the major axis with a load spread uniformly along the inner beam. Flat mounted slide load capacities are reduced between 60-80%

Material:All steel parts.

Beams:Cold drawn carbon steel C45E+C, - EN 10277, milled raceways.

Ball cages:Zinc plated sheet steel.

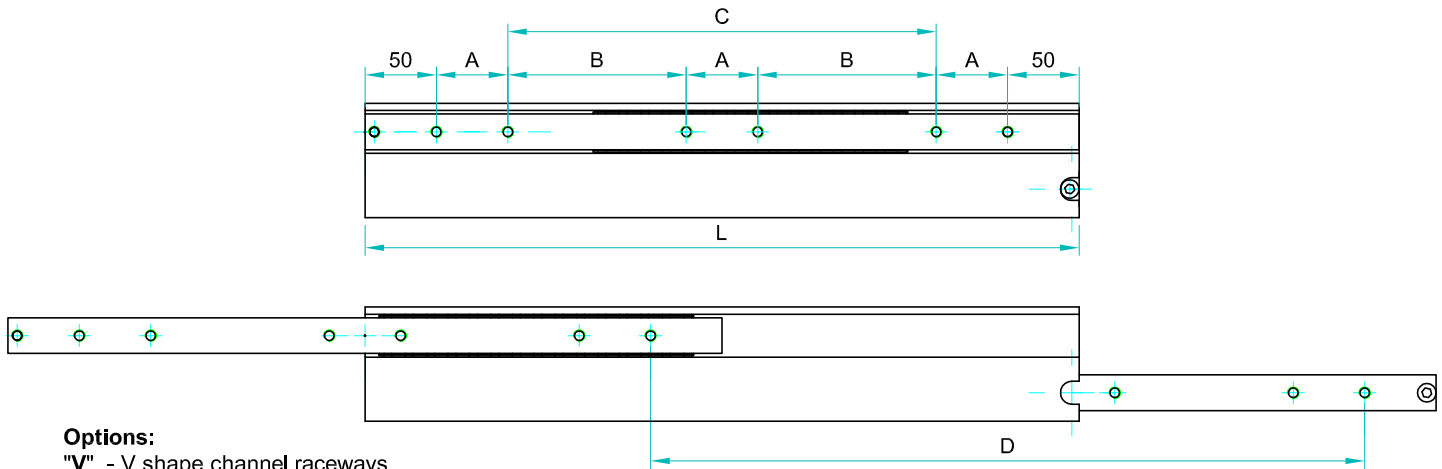
Ball bearings:Chromed C85,G100: DIN 5401.

End Bolts: ASTM A307.

Steel surface protection:Electrolytic alkaline Zinc coating 8-12 microns testet in salt chamber 900 hours without white rast.

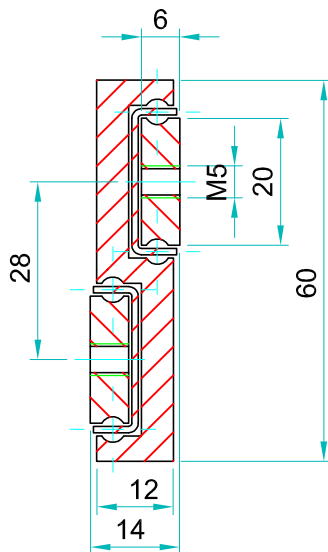
Maximum temperature:We recommend -40 to +200°C with low/high-temp lubrication and free movement to allow for steel expansion.

Note: The slide opening and the hole pattern, can be customized according customer's requirements.



Options:

- "V" - V shape channel raceways
- "F" - one outer beam countersunk
- "FF" - both outer beams countersunk
- "SB" - stainless steel ball bearings
- "SC" - stainless steel ball cages
- "SA" - stainless steel stopping pins and bolts



We recommend use the major axis.
Do not dismantle the slide !
The maximum safe load is given for a fully extended pair of slides, mounted on the major axis with a load spread uniformly along the inner beam. Flat mounted slide load capacities are reduced between 60-80%

Type:STR-60				Hole pattern		
Article number	Instalacion lenght:L	Extension lenght:D	Load per pair: kg	"A"	"B"	"C"
STR6014.0200	200	200	130	50	-	-
STR6014.0250	250	250	150	50	-	50
STR6014.0300	300	300	180	50	-	100
STR6014.0350	350	350	220	50	-	150
STR6014.0400	400	400	240	50	-	200
STR6014.0450	450	450	250	50	-	250
STR6014.0500	500	500	260	50	-	300
STR6014.0550	550	550	255	50	150	350
STR6014.0600	600	600	230	50	175	400
STR6014.0650	650	650	200	50	200	-
STR6014.0700	700	700	160	50	225	-
STR6014.0750	750	750	130	50	250	-
STR6014.0800	800	800	100	50	275	-
STR6014.0850	850	850	90	50	300	-
STR6014.0900	900	900	80	50	325	-
STR6014.0950	950	950	70	50	350	-
STR6014.1000	1000	1000	60	50	375	-
STR6014.1050	1050	1050	50	50	400	-
STR6014.1100	1100	1100	40	50	425	-
STR6014.1150	1150	1150	30	50	450	-
STR6014.1200	1200	1200	20	50	475	-

Material:All steel parts.

Beams:Cold drawn carbon steel C45E+C, - EN 10277, milled raceways.

Ball cages:Zinc plated sheet steel.

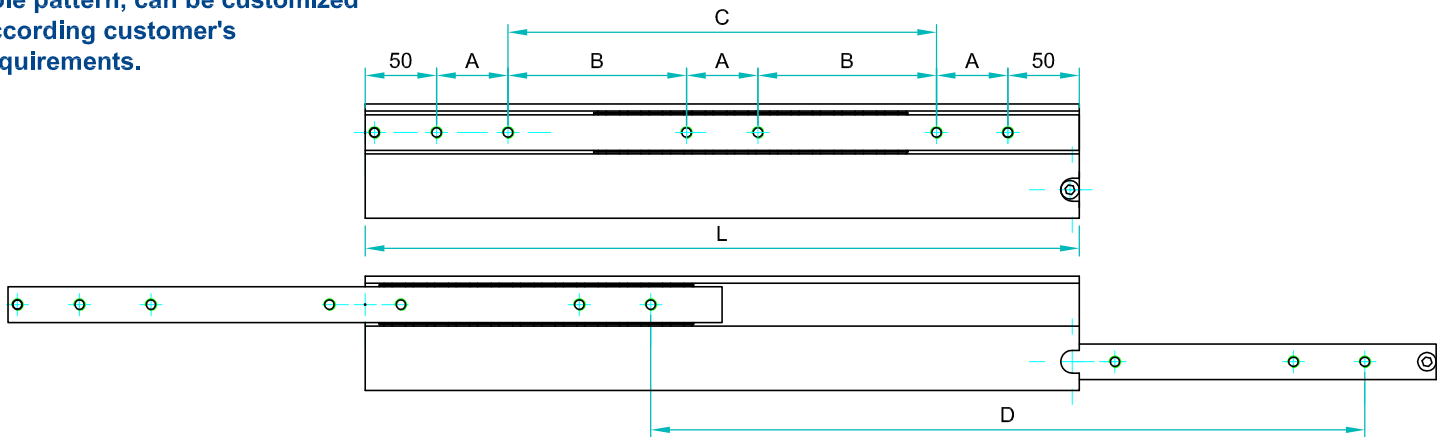
Ball bearings:Chromed C85,G100: DIN 5401.

End Bolts: ASTM A307.

Steel surface protection:Electrolytic alkaline Zinc coating 8-12 microns testet in salt chamber 900 hours without white rast.

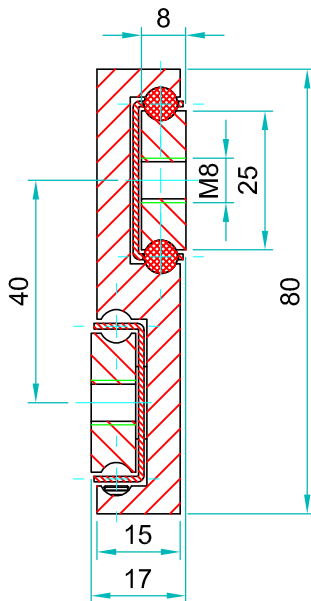
Maximum temperature:We recommend -40 to +200°C with low/high-temp lubrication and free movement to allow for steel expansion.

Note: The slide opening and the hole pattern, can be customized according customer's requirements.



Options:

- "V" - V shape channel raceways
- "F" - one outer beam countersunk
- "FF"- both outer beams countersunk
- "SB"- stainless steel ball bearings
- "SC"- stainless steel ball cages
- "SA"- stainless steel stopping pins and bolts



We recommend use the major axis.
Do not dismantle the slide !
The maximum safe load is given for a fully extended pair of slides, mounted on the major axis with a load spread uniformly along the inner beam. Flat mounted slide load capacities are reduced between 60-80%

Type: STR-80				Hole pattern		
Article number	Instalacion lenght :L	Extension lenght :D	Load per pair : kg	"A"	"B"	"C"
STR8017.0200	200	200	170	50	-	-
STR8017.0250	250	250	190	50	-	50
STR8017.0300	300	300	220	50	-	100
STR8017.0350	350	350	240	50	-	150
STR8017.0400	400	400	260	50	-	200
STR8017.0450	450	450	280	50	-	250
STR8017.0500	500	500	290	50	-	300
STR8017.0550	550	550	300	50	150	-
STR8017.0600	600	600	285	50	175	-
STR8017.0650	650	650	270	50	200	-
STR8017.0700	700	700	260	50	225	-
STR8017.0750	750	750	250	50	250	-
STR8017.0800	800	800	240	50	275	-
STR8017.0850	850	850	230	50	300	-
STR8017.0900	900	900	220	50	325	-
STR8017.0950	950	950	210	50	350	-
STR8017.1000	1000	1000	200	50	375	-
STR8017.1050	1050	1050	190	50	400	-
STR8017.1100	1100	1100	180	50	425	-
STR8017.1150	1150	1150	170	50	450	-
STR8017.1200	1200	1200	160	50	475	-
STR8017.1250	1250	1250	140	50	500	-
STR8017.1300	1300	1300	130	50	525	-
STR8017.1350	1350	1350	120	50	550	-
STR8017.1400	1400	1400	110	50	575	-
STR8017.1450	1450	1450	100	50	600	-
STR8017.1500	1500	1500	90	50	625	-
STR8017.1550	1550	1550	80	50	650	-
STR8017.1600	1600	1600	60	50	675	-

Material:All steel parts.

Beams:Cold drawn carbon steel C45E+C, - EN 10277, milled raceways.

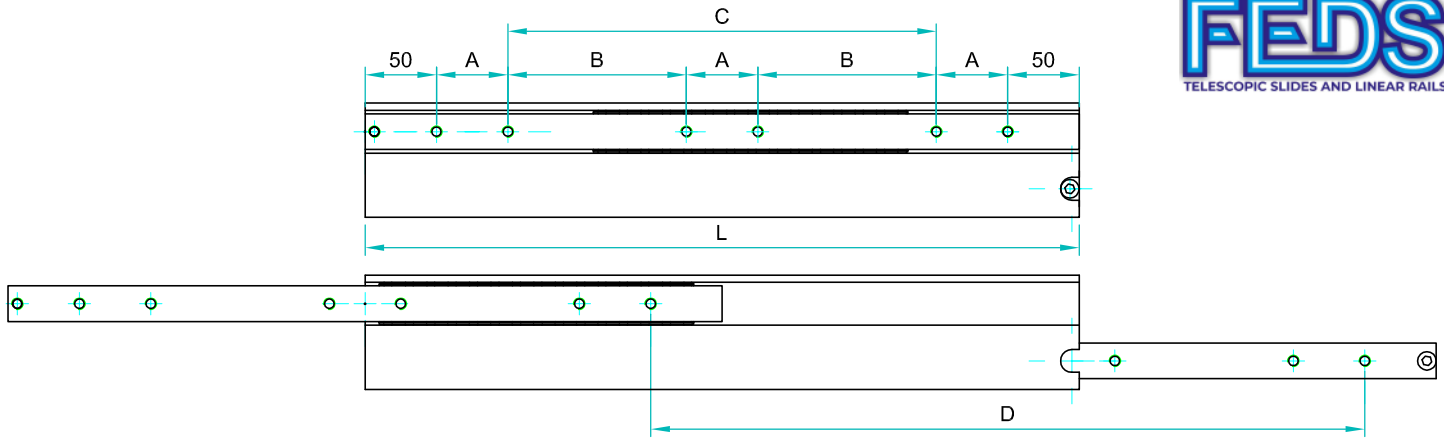
Ball cages:Zinc plated sheet steel.

Ball bearings:Chromed C85,G100: DIN 5401.

End Bolts: ASTM A307.

Steel surface protection:Electrolytic alkaline Zinc coating 8-12 microns testet in salt chamber 900 hours without white rast.

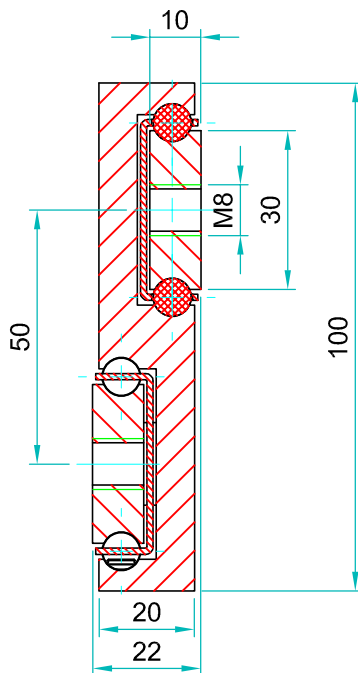
Maximum temperature:We recommend -40 to +200°C with low/high-temp lubrication and free movement to allow for steel expansion.



Note: The slide opening and the hole pattern, can be customized according customer's requirements.

Options:

- "V" - V shape channel raceways
- "F" - one outer beam countersunk
- "FF"- both outer beams countersunk
- "SB"- stainless steel ball bearings
- "SC"- stainless steel ball cages
- "SA"- stainless steel stopping pins and bolts



We recommend use the major axis.
Do not dismantle the slide !
The maximum safe load is given for a fully extended pair of slides, mounted on the major axis with a load spread uniformly along the inner beam. Flat mounted slide load capacities are reduced between 60-80%

Type: STR-100				Hole pattern		
Article number	Instalacion lenght	Extension lenght :D	Load per pair : kg	"A"	"B"	"C"
STR10020.0200	200	200	250	50	-	-
STR10020.0250	250	250	280	50	-	50
STR10020.0300	300	300	320	50	-	100
STR10020.0350	350	350	360	50	-	150
STR10020.0400	400	400	390	50	-	200
STR10020.0450	450	450	410	50	-	250
STR10020.0500	500	500	425	50	-	300
STR10020.0550	550	550	435	50	150	-
STR10020.0600	600	600	420	50	175	-
STR10020.0650	650	650	410	50	200	-
STR10020.0700	700	700	400	50	225	-
STR10020.0750	750	750	380	50	250	-
STR10020.0800	800	800	360	50	275	-
STR10020.0850	850	850	340	50	300	-
STR10020.0900	900	900	320	50	325	-
STR10020.0950	950	950	300	50	350	-
STR10020.1000	1000	1000	285	50	375	-
STR10020.1050	1050	1050	270	50	400	-
STR10020.1100	1100	1100	255	50	425	-
STR10020.1150	1150	1150	240	50	450	-
STR10020.1200	1200	1200	230	50	475	-
STR10020.1250	1250	1250	220	50	500	-
STR10020.1300	1300	1300	210	50	525	-
STR10020.1350	1350	1350	200	50	550	-
STR10020.1400	1400	1400	190	50	575	-
STR10020.1450	1450	1450	180	50	600	-
STR10020.1500	1500	1500	170	50	625	-
STR10020.1550	1550	1550	160	50	650	-
STR10020.1600	1600	1600	150	50	675	-
STR10020.1650	1650	1650	140	50	700	-
STR10020.1700	1700	1700	130	50	725	-
STR10020.1750	1750	1750	110	50	750	-
STR10020.1800	1800	1800	90	50	775	-
STR10020.1850	1850	1850	80	50	800	-
STR10020.1900	1900	1900	70	50	825	-
STR10020.1950	1950	1950	60	50	850	-
STR10020.2000	2000	2000	50	50	875	-

Material:All steel parts.

Beams:Cold drawn carbon steel C45E+C, - EN 10277, milled raceways.

Ball cages:Zinc plated sheet steel.

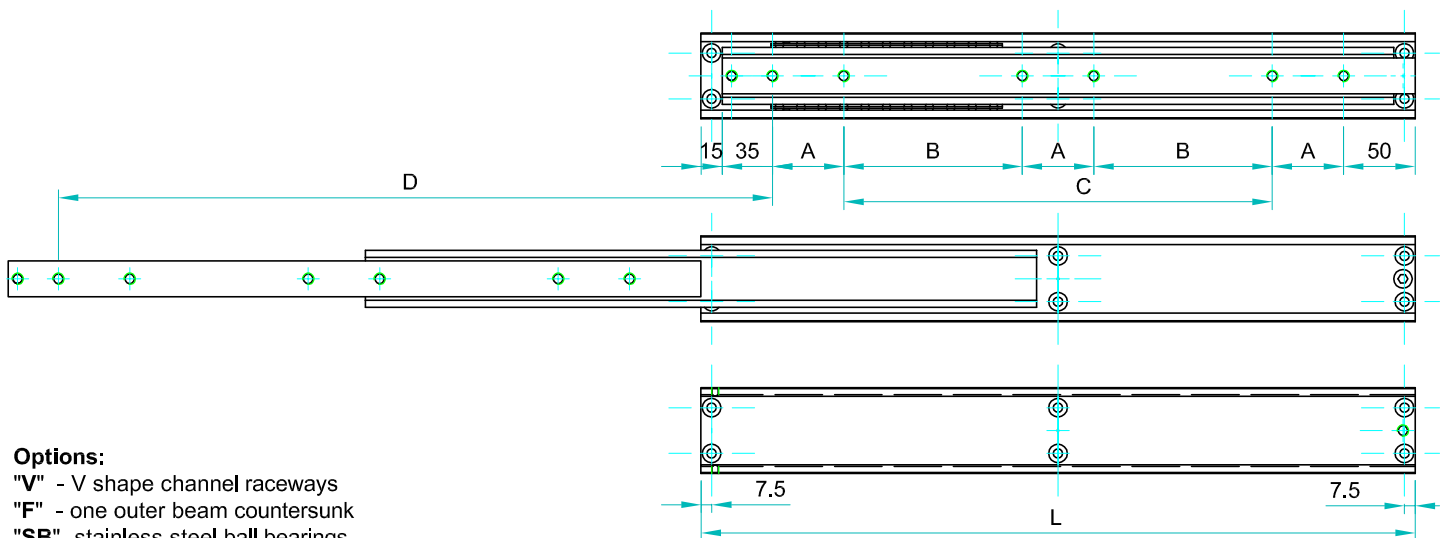
Ball bearings:Chromed C85,G100: DIN 5401.

End Bolts: ASTM A307.

Steel surface protection:Electrolytic alkaline Zinc coating 8-12 microns testet in salt chamber 900 hours without white rast.

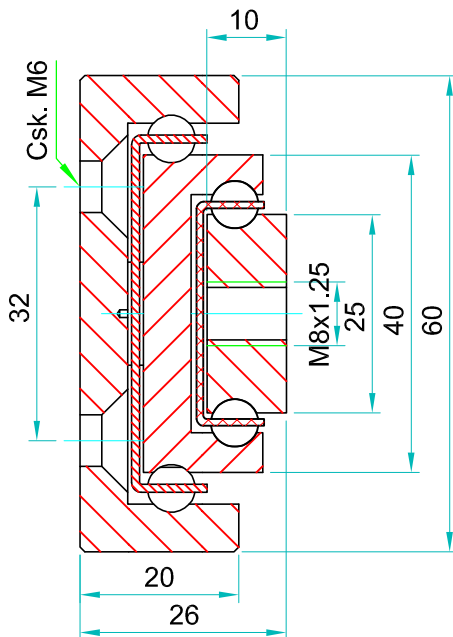
Maximum temperature:We recommend -40 to +200°C with low/high-temp lubrication and free movement to allow for steel expansion.

Note: The slide opening and the hole pattern, can be customized according customer's requirements.



Options:

- "V" - V shape channel raceways
- "F" - one outer beam countersunk
- "SB"- stainless steel ball bearings
- "SC"- stainless steel ball cages
- "SA"- stainless steel stopping pins and bolts



We recommend use the major axis.
Do not dismantle the slide !
The maximum safe load is given for a fully extended pair of slides, mounted on the major axis with a load spread uniformly along the inner beam. Flat mounted slide load capacities are reduced between 60-80%

Type: TSR-60		Hole pattern				
Article number	Instalacion lenght :L	Extension lenght:D	Load per pair: kg	"A"	"B"	"C"
TSR6026.0300	300	300	274	50	-	100
TSR6026.0350	350	350	279	50	-	150
TSR6026.0400	400	400	284	50	-	200
TSR6026.0450	450	450	288	50	-	250
TSR6026.0500	500	500	294	50	-	300
TSR6026.0550	550	550	300	50	150	
TSR6026.0600	600	600	307	50	175	
TSR6026.0650	650	650	314	50	200	-
TSR6026.0700	700	700	310	50	225	-
TSR6026.0750	750	750	306	50	250	-
TSR6026.0800	800	800	300	50	275	-
TSR6026.0850	850	850	292	50	300	-
TSR6026.0900	900	900	286	50	325	-
TSR6026.0950	950	950	280	50	350	-
TSR6026.1000	1000	1000	272	50	375	-
TSR6026.1050	1050	1050	262	50	400	-
TSR6026.1100	1100	1100	252	50	425	-
TSR6026.1150	1150	1150	242	50	450	-
TSR6026.1200	1200	1200	232	50	475	-
TSR6026.1250	1250	1250	222	50	500	-
TSR6026.1300	1300	1300	212	50	525	-
TSR6026.1350	1350	1350	200	50	550	-
TSR6026.1400	1400	1400	190	50	575	-
TSR6026.1450	1450	1450	180	50	600	-
TSR6026.1500	1500	1500	170	50	625	-
TSR6026.1550	1550	1550	160	50	650	-
TSR6026.1600	1600	1600	150	50	675	-

Material:All steel parts.

Beams:Cold drawn carbon steel C45E+C, - EN 10277, milled raceways.

Ball cages:Zinc plated sheet steel.

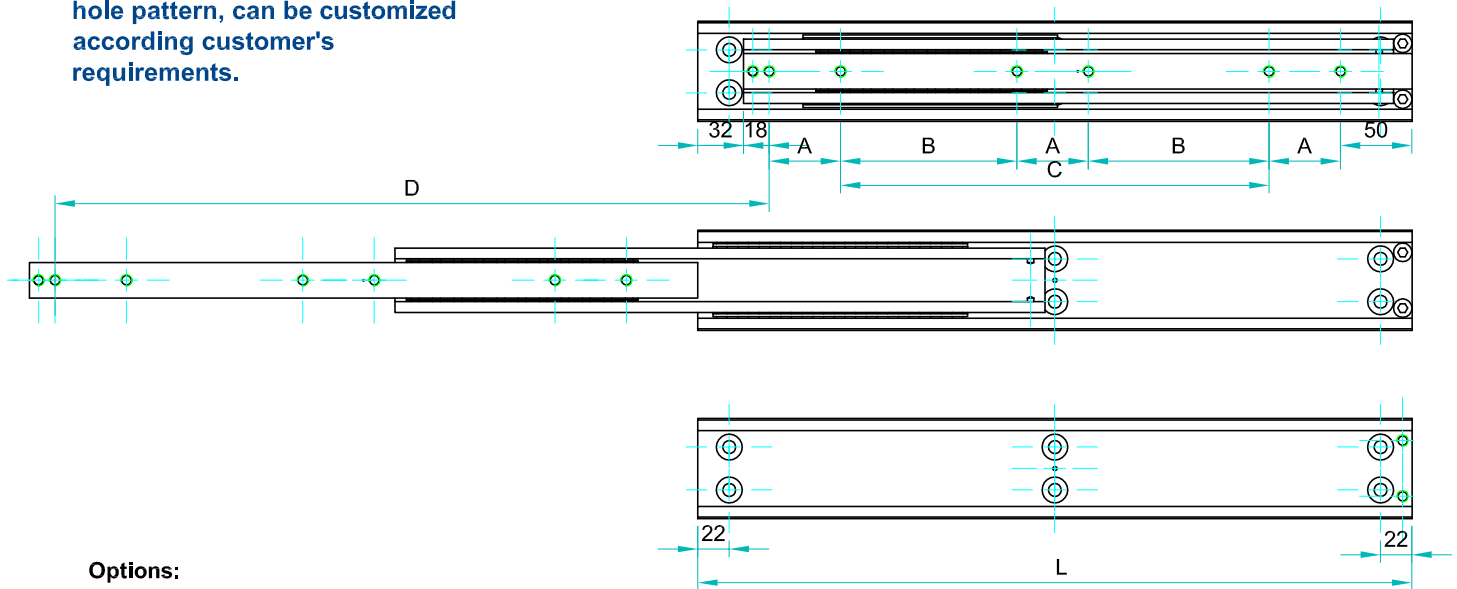
Ball bearings:Chromed C85,G100: DIN 5401.

End Bolts: ASTM A307.

Steel surface protection:Electrolytic alkaline Zinc coating 8-12 microns testet in salt chamber 900 hours without white rast.

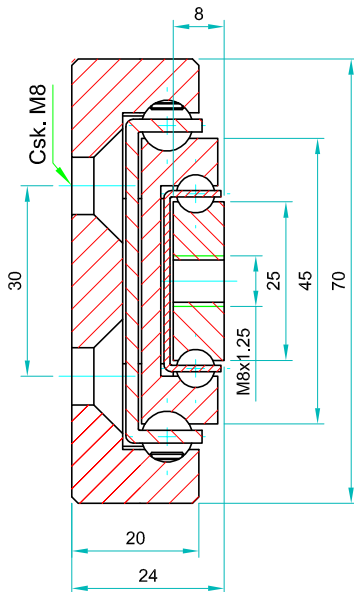
Maximum temperature:We recommend -40 to +200°C with low/high-temp lubrication and free movement to allow for steel expansion.

Note: The slide opening and the hole pattern, can be customized according customer's requirements.



Options:

- "V" - V shape channel raceways
- "F" - one outer beam countersunk
- "SB"- stainless steel ball bearings
- "SC"- stainless steel ball cages
- "SA"- stainless steel stopping pins and bolts



We recommend use the major axis.
Do not dismantle the slide !
The maximum safe load is given for a fully extended pair of slides, mounted on the major axis with a load spread uniformly along the inner beam. Flat mounted slide load capacities are reduced between 60-80%

Type: TSR-70				Hole pattern		
Article number	Instalacion lenght :L	Extension lenght:D	Load per pair: kg	"A"	"B"	"C"
TSR7024.0300	300	300	390	50	-	100
TSR7024.0350	350	350	395	50	-	150
TSR7024.0400	400	400	400	50	-	200
TSR7024.0450	450	450	405	50	-	250
TSR7024.0500	500	500	415	50	-	300
TSR7024.0550	550	550	420	50	-	350
TSR7024.0600	600	600	430	50	-	400
TSR7024.0650	650	650	435	50	200	-
TSR7024.0700	700	700	430	50	225	-
TSR7024.0750	750	750	425	50	250	-
TSR7024.0800	800	800	420	50	275	-
TSR7024.0850	850	850	410	50	300	-
TSR7024.0900	900	900	400	50	325	-
TSR7024.0950	950	950	395	50	350	-
TSR7024.1000	1000	1000	380	50	375	-
TSR7024.1050	1050	1050	365	50	400	-
TSR7024.1100	1100	1100	350	50	425	-
TSR7024.1150	1150	1150	340	50	450	-
TSR7024.1200	1200	1200	325	50	475	-
TSR7024.1250	1250	1250	310	50	500	-
TSR7024.1300	1300	1300	290	50	525	-
TSR7024.1350	1350	1350	280	50	550	-
TSR7024.1400	1400	1400	270	50	575	-
TSR7024.1450	1450	1450	260	50	600	-
TSR7024.1500	1500	1500	245	50	625	-
TSR7024.1550	1550	1550	230	50	650	-
TSR7024.1600	1600	1600	215	50	675	-
TSR7024.1650	1650	1650	200	50	700	-
TSR7024.1700	1700	1700	185	100	650	-
TSR7024.1750	1750	1750	165	100	675	-
TSR7024.1800	1800	1800	145	100	700	-
TSR7024.1850	1850	1850	125	100	725	-
TSR7024.1900	1900	1900	105	100	750	-
TSR7024.1950	1950	1950	85	100	775	-
TSR7024.2000	2000	2000	65	100	800	-

Material:All steel parts.

Beams:Cold drawn carbon steel C45E+C, - EN 10277, milled raceways.

Ball cages:Zinc plated sheet steel.

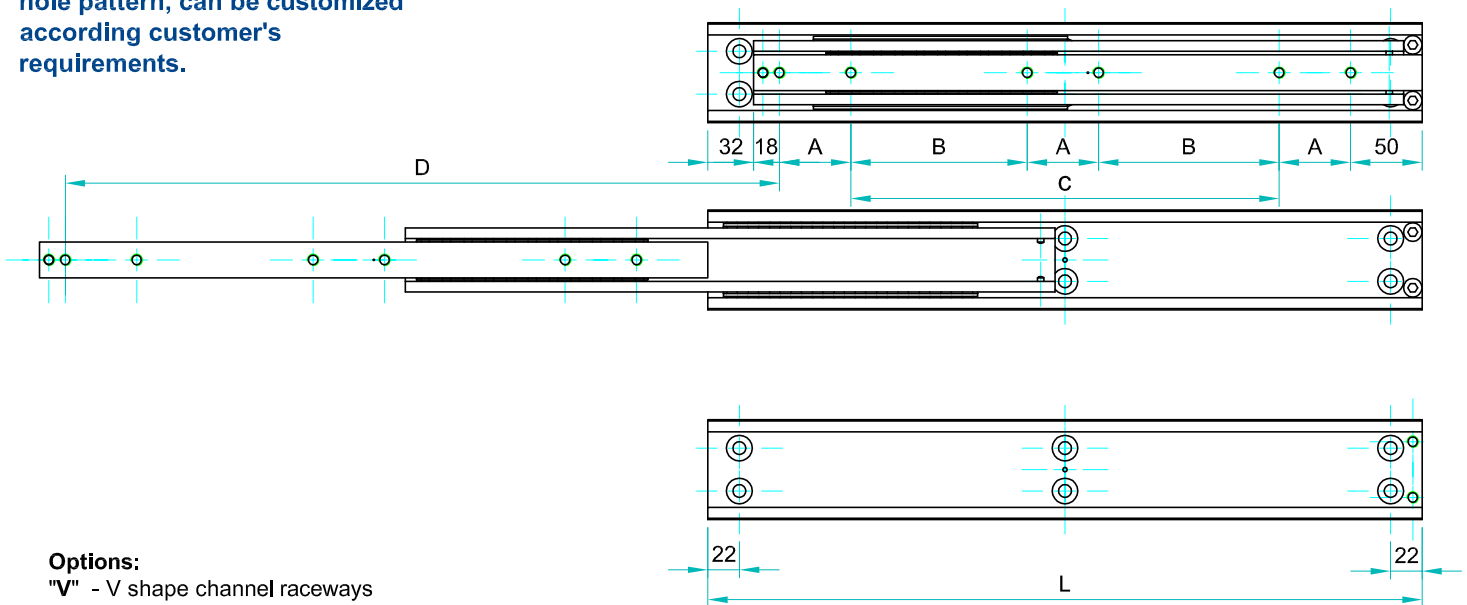
Ball bearings:Chromed C85,G100: DIN 5401.

End Bolts: ASTM A307.

Steel surface protection:Electrolytic alkaline Zinc coating 8-12 microns testet in salt chamber 900 hours without white rast.

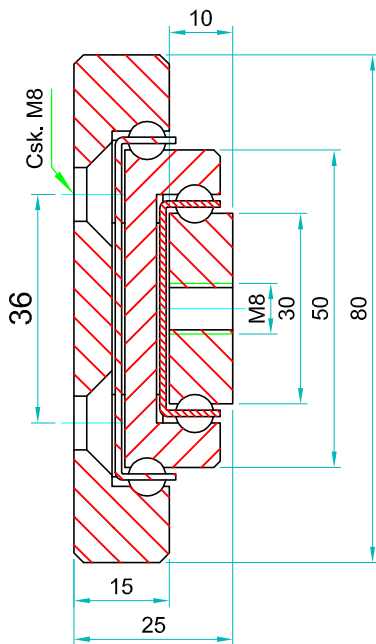
Maximum temperature:We recommend -40 to +200°C with low/high-temp lubrication and free movement to allow for steel expansion.

Note: The slide opening and the hole pattern, can be customized according customer's requirements.



Options:

- "V" - V shape channel raceways
- "F" - one outer beam countersunk
- "SB"- stainless steel ball bearings
- "SC"- stainless steel ball cages
- "SA"- stainless steel stopping pins and bolts



We recommend use the major axis.
Do not dismantle the slide !
The maximum safe load is given for a fully extended pair of slides, mounted on the major axis with a load spread uniformly along the inner beam. Flat mounted slide load capacities are reduced between 60-80%

Type: TSR-80			Hole pattern			
Article number	Instalacion lenght :L	Extension lenght:D	Load per pair: kg	"A"	"B"	"C"
TSR8025.0300	300	300	390	50	-	100
TSR8025.0350	350	350	400	50	-	150
TSR8025.0400	400	400	405	50	-	200
TSR8025.0450	450	450	410	50	-	250
TSR8025.0500	500	500	415	50	-	300
TSR8025.0550	550	550	420	50	-	350
TSR8025.0600	600	600	425	50	-	400
TSR8025.0650	650	650	435	50	200	-
TSR8025.0700	700	700	430	50	225	-
TSR8025.0750	750	750	425	50	250	-
TSR8025.0800	800	800	420	50	275	-
TSR8025.0850	850	850	410	50	300	-
TSR8025.0900	900	900	400	50	325	-
TSR8025.0950	950	950	390	50	350	-
TSR8025.1000	1000	1000	380	50	375	-
TSR8025.1050	1050	1050	370	50	400	-
TSR8025.1100	1100	1100	360	50	425	-
TSR8025.1150	1150	1150	345	50	450	-
TSR8025.1200	1200	1200	330	50	475	-
TSR8025.1250	1250	1250	315	50	500	-
TSR8025.1300	1300	1300	300	50	525	-
TSR8025.1350	1350	1350	280	50	550	-
TSR8025.1400	1400	1400	260	50	575	-
TSR8025.1450	1450	1450	250	50	600	-
TSR8025.1500	1500	1500	240	50	625	-
TSR8025.1550	1550	1550	230	50	650	-
TSR8025.1600	1600	1600	220	50	675	-
TSR8025.1650	1650	1650	210	50	700	-
TSR8025.1700	1700	1700	200	100	650	-
TSR8025.1750	1750	1750	190	100	675	-
TSR8025.1800	1800	1800	180	100	700	-
TSR8025.1850	1850	1850	170	100	725	-
TSR8025.1900	1900	1900	160	100	750	-
TSR8025.1950	1950	1950	150	100	775	-
TSR8025.2000	2000	2000	140	100	800	-

Material:All steel parts.

Beams:Cold drawn carbon steel C45E+C, - EN 10277, milled raceways.

Ball cages:Zinc plated sheet steel.

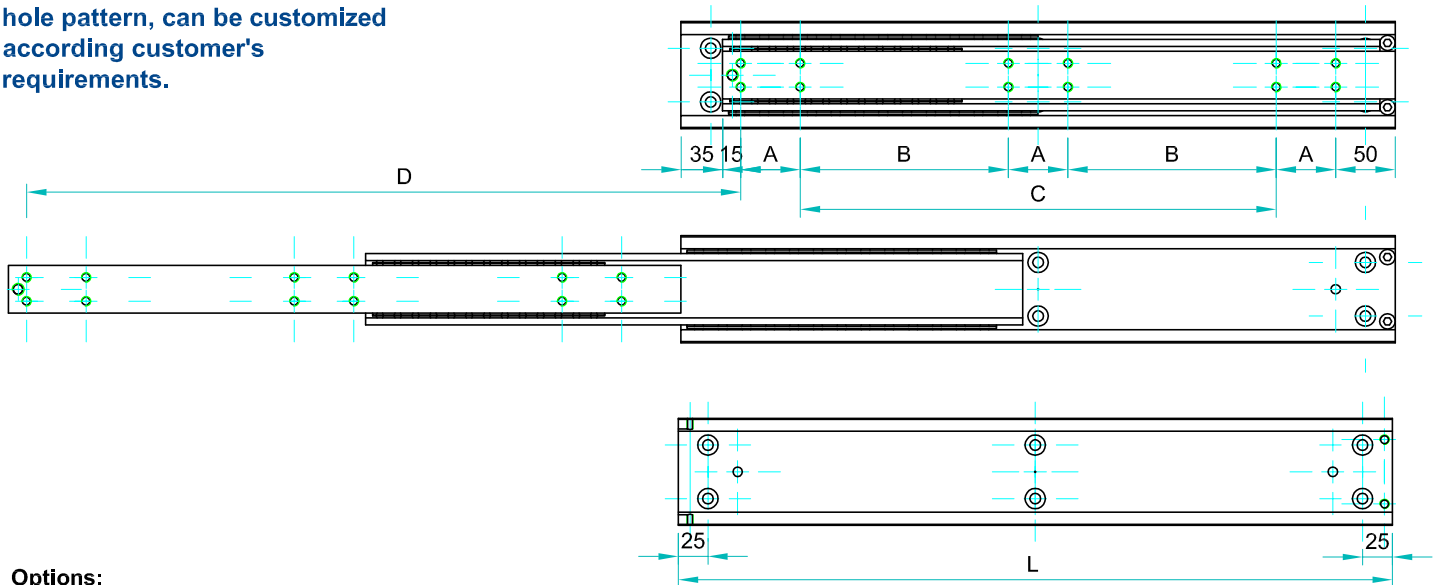
Ball bearings:Chromed C85,G100: DIN 5401.

End Bolts: ASTM A307.

Steel surface protection:Electrolytic alkaline Zinc coating 8-12 microns testet in salt chamber 900 hours without white rast.

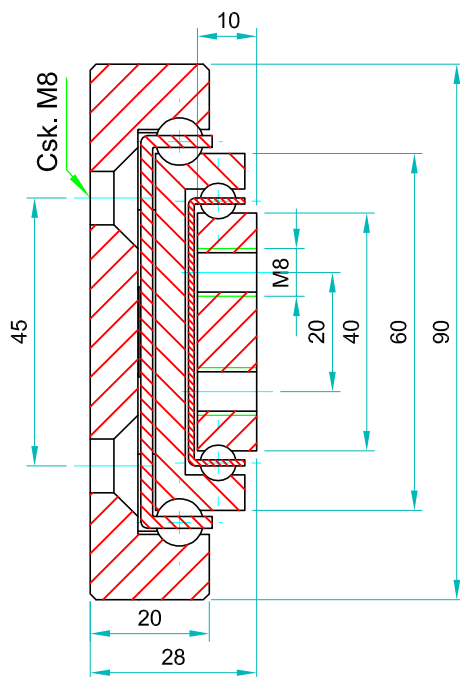
Maximum temperature:We recommend -40 to +200°C with low/high-temp lubrication and free movement to allow for steel expansion.

Note: The slide opening and the hole pattern, can be customized according customer's requirements.



Options:

- "V" - V shape channel raceways
- "F" - one outer beam countersunk
- "SB"- stainless steel ball bearings
- "SC"- stainless steel ball cages
- "SA"- stainless steel stopping pins and bolts



We recommend use the major axis.
Do not dismantle the slide !
The maximum safe load is given for a fully extended pair of slides, mounted on the major axis with a load spread uniformly along the inner beam. Flat mounted slide load capacities are reduced between 60-80%

Type: TSR-90				Hole pattern		
Article number	Instalacion lenght :L	Extension lenght:D	Load per pair: kg	"A"	"B"	"C"
TSR9028.0300	300	300	620	50	-	100
TSR9028.0350	350	350	630	50	-	150
TSR9028.0400	400	400	640	50	-	200
TSR9028.0450	450	450	650	50	-	250
TSR9028.0500	500	500	660	50	-	300
TSR9028.0550	550	550	670	50	-	350
TSR9028.0600	600	600	680	50	-	400
TSR9028.0650	650	650	690	50	200	-
TSR9028.0700	700	700	680	50	225	-
TSR9028.0750	750	750	670	50	250	-
TSR9028.0800	800	800	660	50	275	-
TSR9028.0850	850	850	650	50	300	-
TSR9028.0900	900	900	640	50	325	-
TSR9028.0950	950	950	630	50	350	-
TSR9028.1000	1000	1000	615	50	375	-
TSR9028.1050	1050	1050	590	50	400	-
TSR9028.1100	1100	1100	565	50	425	-
TSR9028.1150	1150	1150	540	50	450	-
TSR9028.1200	1200	1200	520	50	475	-
TSR9028.1250	1250	1250	490	50	500	-
TSR9028.1300	1300	1300	475	50	525	-
TSR9028.1350	1350	1350	455	50	550	-
TSR9028.1400	1400	1400	430	50	575	-
TSR9028.1450	1450	1450	410	50	600	-
TSR9028.1500	1500	1500	380	50	625	-
TSR9028.1550	1550	1550	350	50	650	-
TSR9028.1600	1600	1600	320	50	675	-
TSR9028.1650	1650	1650	290	50	700	-
TSR9028.1700	1700	1700	270	100	650	-
TSR9028.1750	1750	1750	250	100	675	-
TSR9028.1800	1800	1800	230	100	700	-
TSR9028.1850	1850	1850	210	100	725	-
TSR9028.1900	1900	1900	200	100	750	-
TSR9028.1950	1950	1950	195	100	775	-
TSR9028.2000	2000	2000	190	100	800	-

Material:All steel parts.

Beams:Cold drawn carbon steel C45E+C, - EN 10277, milled raceways.

Ball cages:Zinc plated sheet steel.

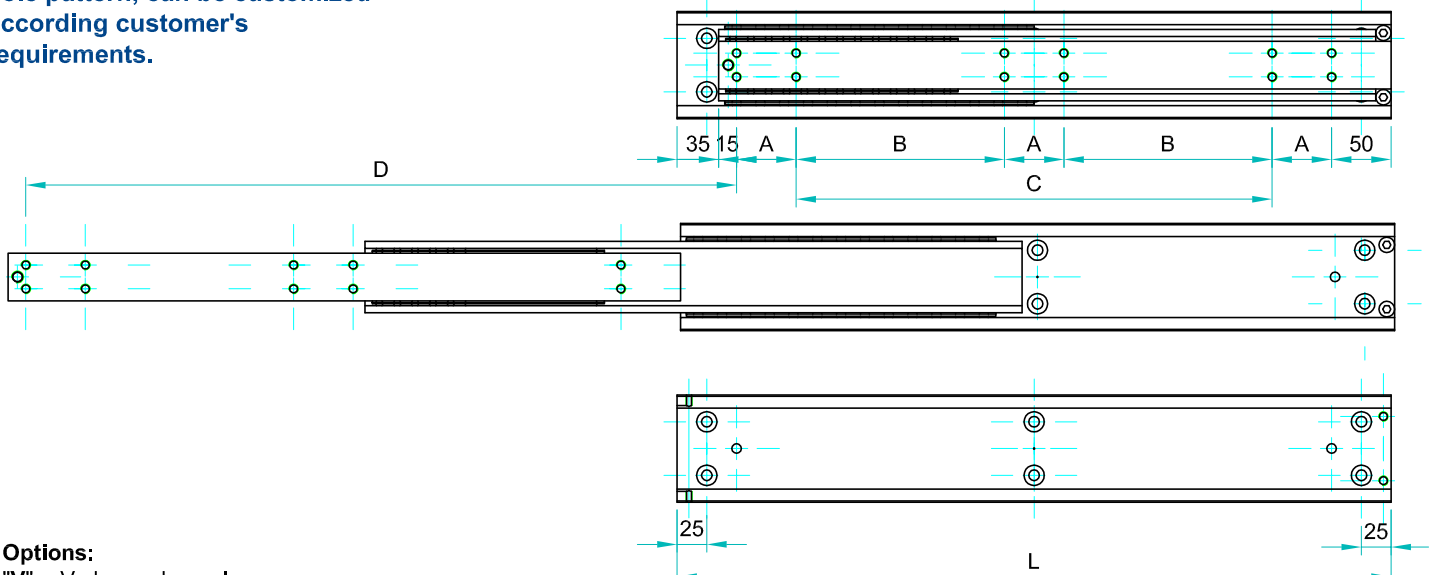
Ball bearings:Chromed C85,G100: DIN 5401.

End Bolts: ASTM A307.

Steel surface protection:Electrolytic alkaline Zinc coating 8-12 microns testet in salt chamber 900 hours without white rast.

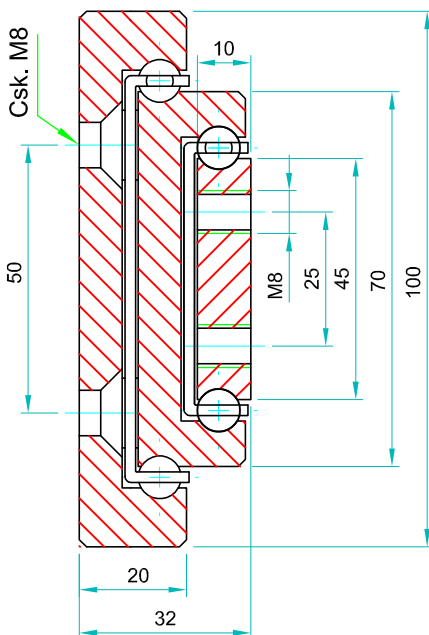
Maximum temperature:We recommend -40 to +200°C with low/high-temp lubrication and free movement to allow for steel expansion.

Note: The slide opening and the hole pattern, can be customized according customer's requirements.



Options:

- "V" - V shape channel raceways
- "F" - one outer beam countersunk
- "SB"- stainless steel ball bearings
- "SC"- stainless steel ball cages
- "SA"- stainless steel stopping pins and bolts



We recommend use the major axis.
Do not dismantle the slide !
The maximum safe load is given for a fully extended pair of slides, mounted on the major axis with a load spread uniformly along the inner beam. Flat mounted slide load capacities are reduced between 60-80%

Type: TSR-100				Hole pattern		
Article number	Instalacion lenght :L	Extension lenght:D	Load per pair: kg	"A"	"B"	"C"
TSR10027.0300	300	300	820	50	-	100
TSR10027.0350	350	350	860	50	-	150
TSR10027.0400	400	400	900	50	-	200
TSR10027.0450	450	450	940	50	-	250
TSR10027.0500	500	500	960	50	-	300
TSR10027.0550	550	550	980	50	-	350
TSR10027.0600	600	600	1000	50	-	400
TSR10027.0650	650	650	980	50	200	-
TSR10027.0700	700	700	950	50	225	-
TSR10027.0750	750	750	920	50	250	-
TSR10027.0800	800	800	890	50	275	-
TSR10027.0850	850	850	860	50	300	-
TSR10027.0900	900	900	830	50	325	-
TSR10027.0950	950	950	820	50	350	-
TSR10027.1000	1000	1000	800	50	375	-
TSR10027.1050	1050	1050	780	50	400	-
TSR10027.1100	1100	1100	760	50	425	-
TSR10027.1150	1150	1150	740	50	450	-
TSR10027.1200	1200	1200	720	50	475	-
TSR10027.1250	1250	1250	700	50	500	-
TSR10027.1300	1300	1300	680	50	525	-
TSR10027.1350	1350	1350	660	50	550	-
TSR10027.1400	1400	1400	640	50	575	-
TSR10027.1450	1450	1450	620	50	600	-
TSR10027.1500	1500	1500	600	50	625	-
TSR10027.1550	1550	1550	580	50	650	-
TSR10027.1600	1600	1600	560	50	675	-
TSR10027.1650	1650	1650	540	50	700	-
TSR10027.1700	1700	1700	520	100	650	-
TSR10027.1750	1750	1750	500	100	675	-
TSR10027.1800	1800	1800	480	100	700	-
TSR10027.1850	1850	1850	460	100	725	-
TSR10027.1900	1900	1900	440	100	750	-
TSR10027.1950	1950	1950	420	100	775	-
TSR10027.2000	2000	2000	400	100	800	-

Material:All steel parts.

Beams:Cold drawn carbon steel C45E+C, - EN 10277, milled raceways.

Ball cages:Zinc plated sheet steel.

Ball bearings:Chromed C85,G100: DIN 5401.

End Bolts: ASTM A307.

Steel surface protection:Electrolytic alkaline Zinc coating 8-12 microns testet in salt chamber 900 hours without white rast.

Maximum temperature:We recommend -40 to +200°C with low/high-temp lubrication and free movement to allow for steel expansion.