

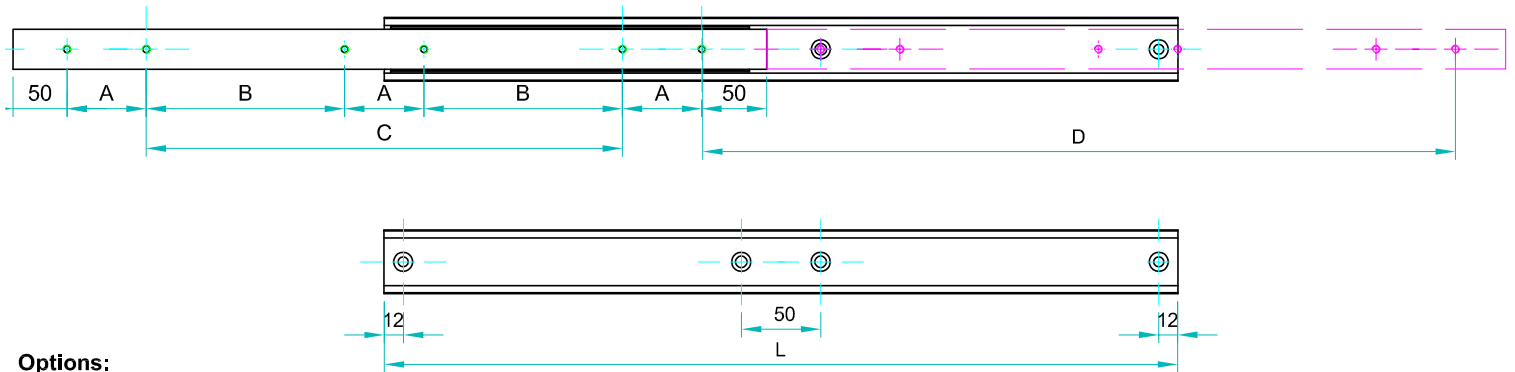
FEDS

TELESCOPIC SLIDES AND LINEAR RAILS

Partial extension
Bi directional

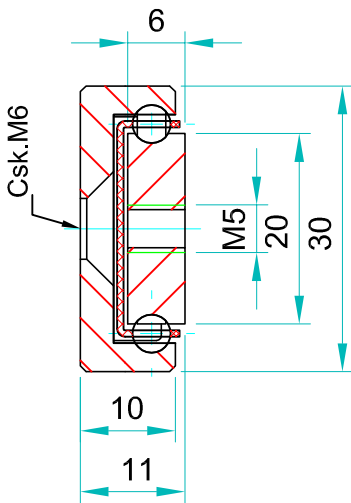
Slide type: **OWST**

Note: The slide opening and the hole pattern, can be customized according customer's requirements.



Options:

- "V" - V shape channel raceways
- "F" - one outer beam countersunk
- "SB"- stainless steel ball bearings
- "SC"- stainless steel ball cages
- "SA"- stainless steel stopping pins and bolts



We recommend use the major axis.
Do not dismantle the slide !
The maximum safe load is given for a fully extended pair of slides, mounted on the major axis with a load spread uniformly along the inner beam. Flat mounted slide load capacities are reduced between 60-80%

Type: OWST-30				Hole pattern		
Article number	Instalacion lenght: L	Extension lenght: D	Load per pair: kg	"A"	"B"	"C"
OWST3011.0150	150	150	80	50	-	-
OWST3011.0200	200	200	90	50	-	-
OWST3011.0250	250	250	110	50	-	50
OWST3011.0300	300	300	130	50	-	100
OWST3011.0350	350	350	150	50	-	150
OWST3011.0400	400	400	180	50	-	200
OWST3011.0450	450	450	240	50	-	250
OWST3011.0500	500	500	260	50		300
OWST3011.0550	550	550	270	50	150	-
OWST3011.0600	600	600	280	50	175	-
OWST3011.0650	650	650	260	50	200	-
OWST3011.0700	700	700	240	50	225	-
OWST3011.0750	750	750	220	50	250	-
OWST3011.0800	800	800	200	50	275	-
OWST3011.0850	850	850	180	50	300	-
OWST3011.0900	900	900	160	50	325	-
OWST3011.0950	950	950	140	50	350	-
OWST3011.1000	1000	1000	120	50	375	-

Material:All steel parts.

Beams:Cold drawn carbon steel C45E+C, - EN 10277, milled raceways.

Ball cages:Zinc plated sheet steel.

Ball bearings:Chromed C85,G100: DIN 5401.

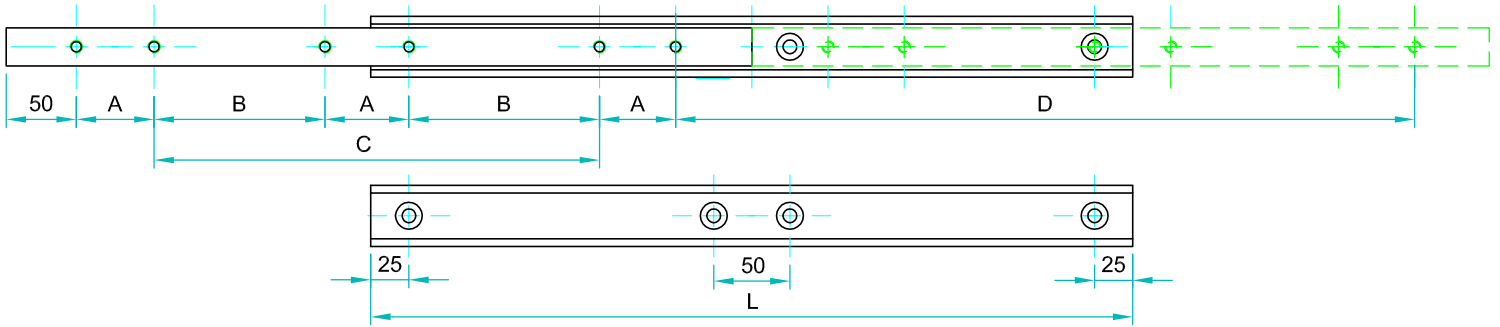
End Bolts: ASTM A307.

Steel surface protection:Electrolytic alkaline Zinc coating 8-12 microns testet in salt chamber 900 hours without white rast.

Maximum temperature:We recommend -40 to +200°C with low/high-temp lubrication and free movement to allow for steel expansion.

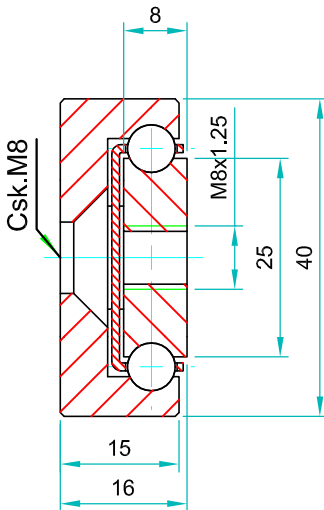


according customer's requirements.



Options:

- "V" - V shape channel raceways
- "F" - one outer beam countersunk
- "SB"- stainless steel ball bearings
- "SC"- stainless steel ball cages
- "SA"- stainless steel stopping pins and bolts



We recommend use the major axis.
Do not dismantle the slide !
The maximum safe load is given for a fully extended pair of slides, mounted on the major axis with a load spread uniformly along the inner beam
Flat mounted slide load capacities are reduced between 60-80%

Type: OWST-40				Hole pattern		
Article number	Instalacion lenght:L	Extension lenght :D	Load per pair: kg	"A"	"B"	"C"
OWST4016.0200	200	200	240	50	-	-
OWST4016.0250	250	250	250	50	-	50
OWST4016.0300	300	300	260	50	-	100
OWST4016.0350	350	350	280	50	-	150
OWST4016.0400	400	400	300	50	-	200
OWST4016.0450	450	450	315	50	-	250
OWST4016.0500	500	500	330	50	-	300
OWST4016.0550	550	550	340	50	150	-
OWST4016.0600	600	600	350	50	175	-
OWST4016.0650	650	650	355	50	200	-
OWST4016.0700	700	700	360	50	225	-
OWST4016.0750	750	750	345	50	250	-
OWST4016.0800	800	800	335	50	275	-
OWST4016.0850	850	850	320	50	300	-
OWST4016.0900	900	900	305	50	325	-
OWST4016.0950	950	950	280	50	350	-
OWST4016.1000	1000	1000	265	50	375	-
OWST4016.1050	1050	1050	250	50	400	-
OWST4016.1100	1100	1100	240	50	425	-
OWST4016.1150	1150	1150	230	50	450	-
OWST4016.1200	1200	1200	220	50	475	-
OWST4016.1250	1250	1250	200	50	500	-
OWST4016.1300	1300	1300	180	50	525	-
OWST4016.1350	1350	1350	160	50	550	-
OWST4016.1400	1400	1400	140	50	575	-
OWST4016.1450	1450	1450	120	50	600	-
OWST4016.1500	1500	1500	100	50	625	-
OWST4016.1550	1550	1550	80	50	650	-
OWST4016.1600	1600	1600	60	50	675	-

Material:All steel parts.

Beams:Cold drawn carbon steel C45E+C, - EN 10277, milled raceways.

Ball cages:Zinc plated sheet steel.

Ball bearings:Chromed C85,G100: DIN 5401.

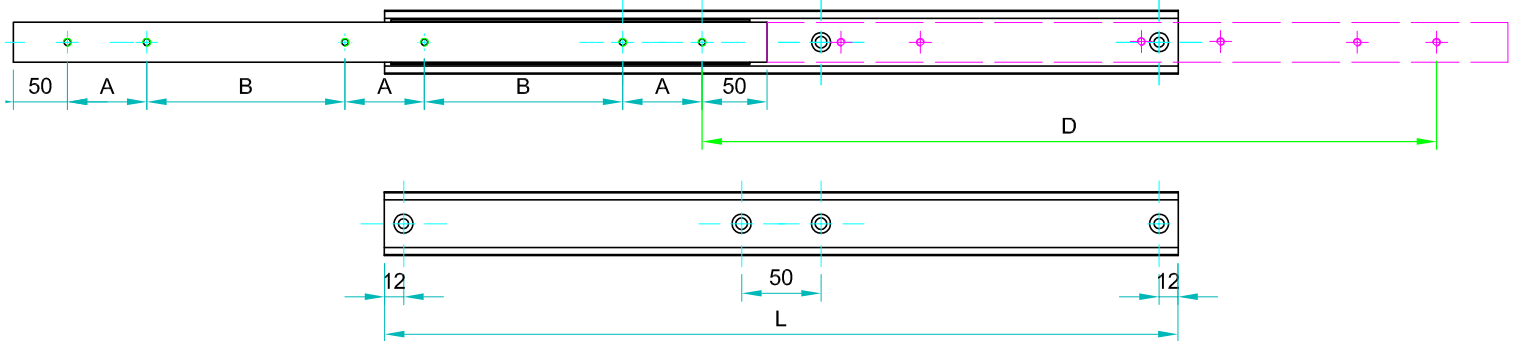
End Bolts: ASTM A307.

Steel surface protection:Electrolytic alkaline Zinc coating 8-12 microns testet in salt chamber 900 hours without white rast.

Maximum temperature:We recommend -40 to +200°C with low/high-temp lubrication and free movement to allow for steel expansion.



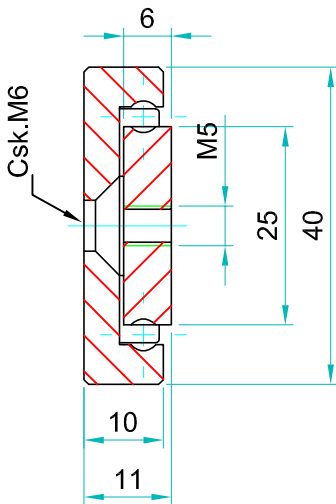
Note: The slide opening and the hole pattern, can be customized according customer's requirements.



Options:

- "V" - V shape channel raceways
- "F" - one outer beam countersunk
- "SB"- stainless steel ball bearings
- "SC"- stainless steel ball cages
- "SA"- stainless steel stopping pins and bolts

Type: OWST-45				Hole pattern		
Article number	Instalacion lenght: L	Extension lenght: D	Load per pair: kg	"A"	"B"	"C"
OWST4511.0150	150	150	80	50	-	-
OWST4511.0200	200	200	90	50	-	-
OWST4511.0250	250	250	110	50	-	50
OWST4511.0300	300	300	130	50	-	100
OWST4511.0350	350	350	150	50	-	150
OWST4511.0400	400	400	180	50	-	200
OWST4511.0450	450	450	240	50	-	250
OWST4511.0500	500	500	260	50		300
OWST4511.0550	550	550	270	0	150	-
OWST4511.0600	600	600	260	50	175	-
OWST4511.0650	650	650	250	50	200	-
OWST4511.0700	700	700	240	50	225	-
OWST4511.0750	750	750	230	50	250	-
OWST4511.0800	800	800	220	50	275	-
OWST4511.0850	850	850	210	50	300	-
OWST4511.0900	900	900	200	50	325	-
OWST4511.0950	950	950	190	50	350	-
OWST4511.1000	1000	1000	180	50	375	-
OWST4511.1050	1050	1050	160	50	400	-
OWST4511.1100	1100	1100	140	50	425	-
OWST4511.1150	1150	1150	120	50	450	-
OWST4511.1200	1200	1200	100	50	475	-



We recommend use the major axis.
Do not dismantle the slide !
The maximum safe load is given for a fully extended pair of slides, mounted on the major axis with a load spread uniformly along the inner beam. Flat mounted slide load capacities are reduced between 60-80%

Material:All steel parts.

Beams:Cold drawn carbon steel C45E+C, - EN 10277, milled raceways.

Ball cages:Zinc plated sheet steel.

Ball bearings:Chromed C85,G100: DIN 5401.

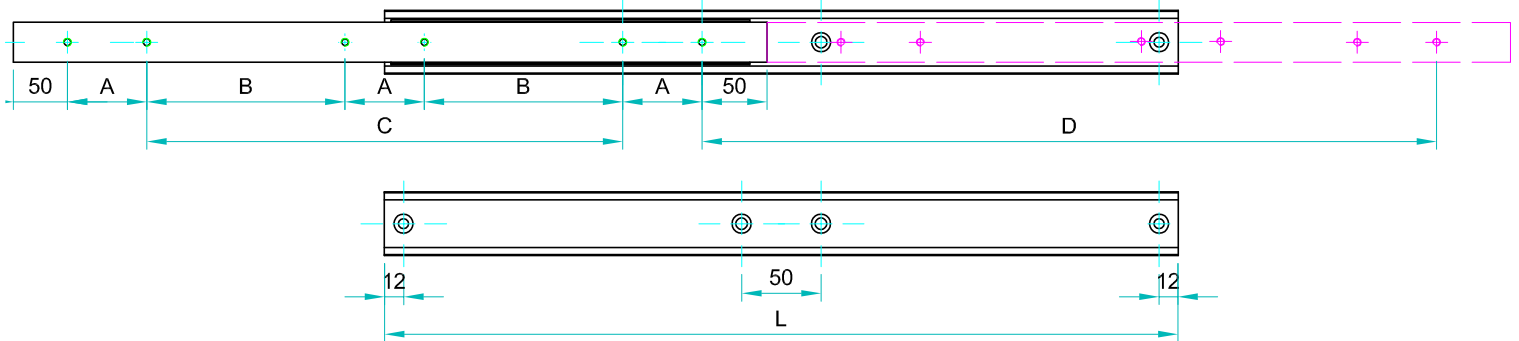
End Bolts: ASTM A307.

Steel surface protection:Electrolytic alkaline Zinc coating 8-12 microns testet in salt chamber 900 hours without white rast.

Maximum temperature:We recommend -40 to +200°C with low/high-temp lubrication and free movement to allow for steel expansion.

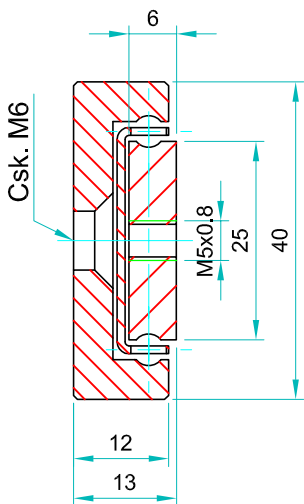


Note: The slide opening and the hole pattern, can be customized according customer's requirements.



Options:

- "V" - V shape channel raceways
- "F" - one outer beam countersunk
- "SB"- stainless steel ball bearings
- "SC"- stainless steel ball cages
- "SA"- stainless steel stopping pins and bolts



We recommend use the major axis.
Do not dismantle the slide !
The maximum safe load is given for a fully extended pair of slides, mounted on the major axis with a load spread uniformly along the inner beam. Flat mounted slide load capacities are reduced between 60-80%

Type: OWST-48				Hole pattern		
Article number	Instalacion lenght: L	Extension lenght: D	Load per pair: kg	"A"	"B"	"C"
OWST4813.0150	150	150	80	50	-	-
OWST4813.0200	200	200	90	50	-	-
OWST4813.0250	250	250	110	50	-	50
OWST4813.0300	300	300	130	50	-	100
OWST4813.0350	350	350	150	50	-	150
OWST4813.0400	400	400	180	50	-	200
OWST4813.0450	450	450	230	50	-	250
OWST4813.0500	500	500	260	50	-	300
OWST4813.0550	550	550	280	50	150	-
OWST4813.0600	600	600	270	50	175	-
OWST4813.0650	650	650	260	50	200	-
OWST4813.0700	700	700	250	50	225	-
OWST4813.0750	750	750	240	50	250	-
OWST4813.0800	800	800	230	50	275	-
OWST4813.0850	850	850	220	50	300	-
OWST4813.0900	900	900	210	50	325	-
OWST4813.0950	950	950	200	50	350	-
OWST4813.1000	1000	1000	190	50	375	-
OWST4813.1050	1050	1050	170	50	400	-
OWST4813.1100	1100	1100	150	50	425	-
OWST4813.1150	1150	1150	130	50	450	-
OWST4813.1200	1200	1200	110	50	475	-

Material:All steel parts.

Beams:Cold drawn carbon steel C45E+C, - EN 10277, milled raceways.

Ball cages:Zinc plated sheet steel.

Ball bearings:Chromed C85,G100: DIN 5401.

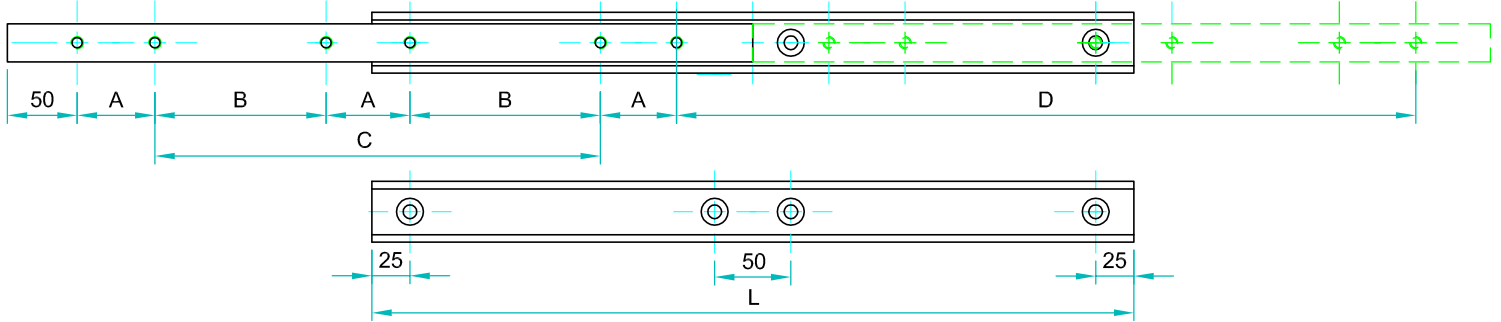
End Bolts: ASTM A307.

Steel surface protection:Electrolytic alkaline Zinc coating 8-12 microns testet in salt chamber 900 hours without white rast.

Maximum temperature:We recommend -40 to +200°C with low/high-temp lubrication and free movement to allow for steel expansion.

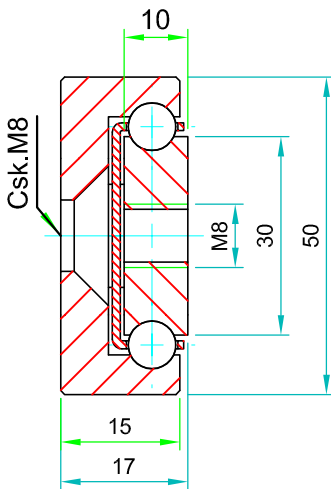


according customer's requirements.



Options:

- "V" - V shape channel raceways
- "F" - one outer beam countersunk
- "SB"-stainless steel ball bearings
- "SC"-stainless steel ball cages
- "SA"-stainless steel stopping pins and bolts



We recommend use the major axis.
Do not dismantle the slide !
The maximum safe load is given for a fully extended pair of slides, mounted on the major axis with a load spread uniformly along the inner beam
Flat mounted slide load capacities are reduced between 60-80%

Type: OWST-50				Hole pattern		
Article number	Instalacion lenght:L	Extension lenght:D	Load per pair: kg	"A"	"B"	"C"
OWST1517.0200	200	200	290	50	-	-
OWST1517.0250	250	250	300	50	-	50
OWST1517.0300	300	300	310	50	-	100
OWST1517.0350	350	350	320	50	-	150
OWST1517.0400	400	400	330	50	-	200
OWST1517.0450	450	450	340	50	-	250
OWST1517.0500	500	500	350	50	-	300
OWST1517.0550	550	550	340	50	150	-
OWST1517.0600	600	600	330	50	175	-
OWST1517.0650	650	650	320	50	200	-
OWST1517.0700	700	700	310	50	225	-
OWST1517.0750	750	750	300	50	250	-
OWST1517.0800	800	800	290	50	275	-
OWST1517.0850	850	850	280	50	300	-
OWST1517.0900	900	900	270	50	325	-
OWST1517.0950	950	950	260	50	350	-
OWST1517.1000	1000	1000	250	50	375	-
OWST1517.1050	1050	1050	240	50	400	-
OWST1517.1100	1100	1100	230	50	425	-
OWST1517.1150	1150	1150	225	50	450	-
OWST1517.1200	1200	1200	220	50	475	-
OWST1517.1250	1250	1250	215	50	500	-
OWST1517.1300	1300	1300	205	50	525	-
OWST1517.1350	1350	1350	200	50	550	-
OWST1517.1400	1400	1400	190	50	575	-
OWST1517.1450	1450	1450	180	50	600	-
OWST1517.1500	1500	1500	170	50	625	-
OWST1517.1550	1550	1550	160	50	650	-
OWST1517.1600	1600	1600	150	50	675	-
OWST1517.1650	1650	1650	140	50	700	-
OWST1517.1700	1700	1700	130	100	650	-
OWST1517.1750	1750	1750	120	100	675	-
OWST1517.1800	1800	1800	110	100	700	-
OWST1517.1850	1850	1850	100	100	725	-
OWST1517.1900	1900	1900	90	100	750	-
OWST1517.1950	1950	1950	80	100	775	-
OWST1517.2000	2000	2000	70	100	800	-

Material: All steel parts

Beams: Cold down carbon steel C45E+C, - EN 10277, milled raceways

Ball cages: Zinc plated sheet steel .

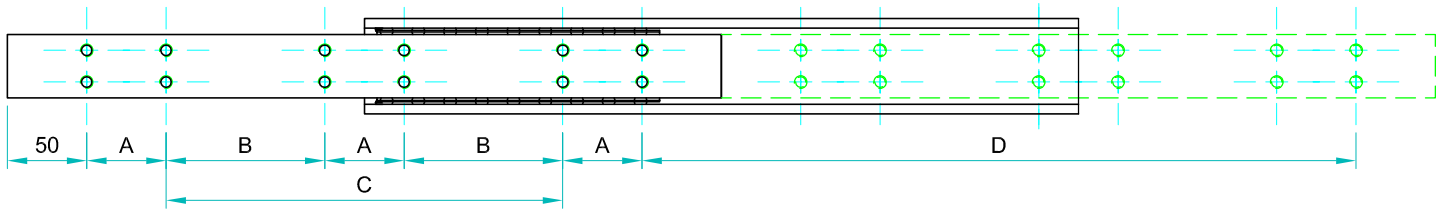
Ball bearings: Chromed C85,G100: DIN 5401

End Bolts: ASTM A307

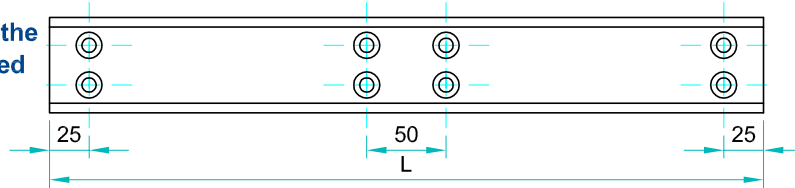
Steel surface protection: Electrolytic alkaline Zinc coating 8-12 microns

Maximum temperature: We recommend -10 to +200°C with low/high-temp lubrication and free movement to allow for steel expansion.



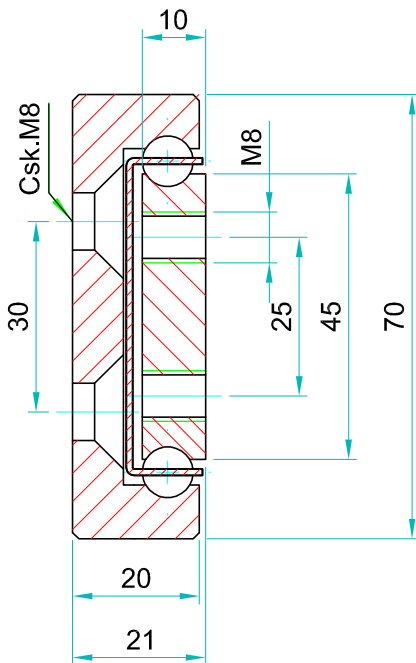


Note: The slide opening and the hole pattern, can be customized according customer's requirements.



Options:

- "V" - V shape channel raceways
- "F" - one outer beam countersunk
- "SB"- stainless steel ball bearings
- "SC"- stainless steel ball cages
- "SA"- stainless steel stopping pins and bolts



We recommend use the major axis.
Do not dismantle the slide !
The maximum safe load is given for a fully extended pair of slides, mounted on the major axis with a load spread uniformly along the inner beam. Flat mounted slide load capacities are reduced between 60-80%

Type: OWST-60				Hole pattern		
Article number	Instalacion lenght :L	Extension lenght:D	Load per pair : kg	"A"	"B"	"C"
OWST6017.0300	300	300	520	50	-	100
OWST6017.0350	350	350	560	50	-	150
OWST6017.0400	400	400	610	50	-	200
OWST6017.0450	450	450	660	50	-	250
OWST6017.0500	500	500	710	50	-	300
OWST6017.0550	550	550	720	50	-	350
OWST6017.0600	600	600	730	50	-	400
OWST6017.0650	650	650	740	50	200	-
OWST6017.0700	700	700	750	50	225	-
OWST6017.0750	750	750	740	50	250	-
OWST6017.0800	800	800	720	50	275	-
OWST6017.0850	850	850	700	50	300	-
OWST6017.0900	900	900	680	50	325	-
OWST6017.0950	950	950	660	50	350	-
OWST6017.1000	1000	1000	640	50	375	-
OWST6017.1050	1050	1050	610	50	400	-
OWST6017.1100	1100	1100	580	50	425	-
OWST6017.1150	1150	1150	550	50	450	-
OWST6017.1200	1200	1200	520	50	475	-
OWST6017.1250	1250	1250	490	50	500	-
OWST6017.1300	1300	1300	480	50	525	-
OWST6017.1350	1350	1350	460	50	550	-
OWST6017.1400	1400	1400	440	50	575	-
OWST6017.1450	1450	1450	420	50	600	-
OWST6017.1500	1500	1500	390	50	625	-
OWST6017.1550	1550	1550	360	50	650	-
OWST6017.1600	1600	1600	340	50	675	-
OWST6017.1650	1650	1650	310	50	700	-
OWST6017.1700	1700	1700	280	100	650	-
OWST6017.1750	1750	1750	250	100	675	-
OWST6017.1800	1800	1800	220	100	700	-
OWST6017.1850	1850	1850	190	100	725	-
OWST6017.1900	1900	1900	160	100	750	-
OWST6017.1950	1950	1950	130	100	775	-
OWST6017.2000	2000	2000	100	100	800	-

Material:All steel parts.

Beams:Cold drawn carbon steel C45E+C, - EN 10277, milled raceways.

Ball cages:Zinc plated sheet steel.

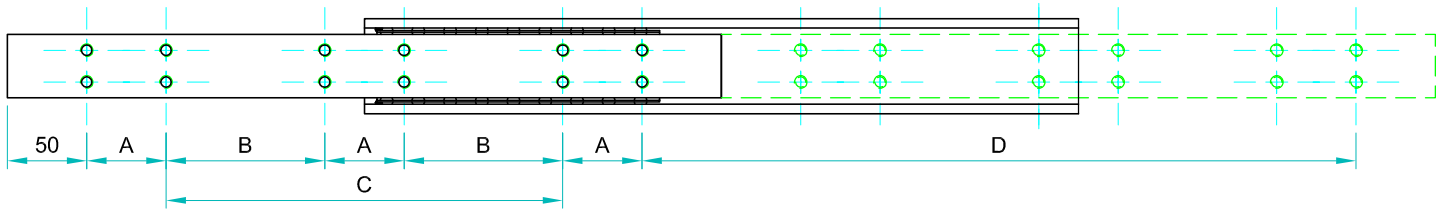
Ball bearings:Chromed C85,G100: DIN 5401.

End Bolts: ASTM A307.

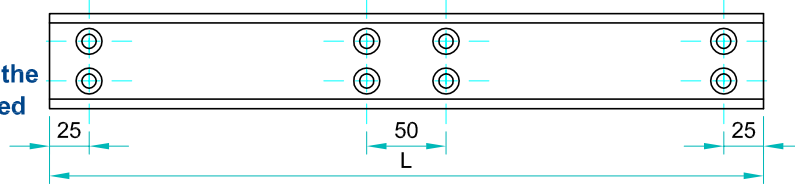
Steel surface protection:Electrolytic alkaline Zinc coating 8-12 microns testet in salt chamber 900 hours without white rast.

Maximum temperature:We recommend -40 to +200°C with low/high-temp lubrication and free movement to allow for steel expansion.



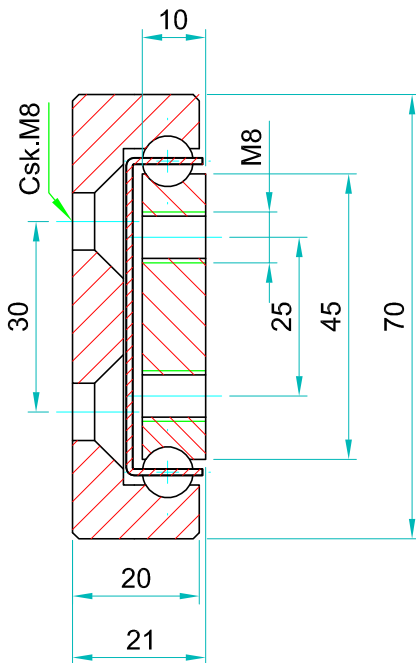


Note: The slide opening and the hole pattern, can be customized according customer's requirements.



Options:

- "V" - V shape channel raceways
- "F" - one outer beam countersunk
- "SB"- stainless steel ball bearings
- "SC"- stainless steel ball cages
- "SA"- stainless steel stopping pins and bolts



We recommend use the major axis.
Do not dismantle the slide !
The maximum safe load is given for a fully extended pair of slides, mounted on the major axis with a load spread uniformly along the inner beam. Flat mounted slide load capacities are reduced between 60-80%

Type: OWST-70				Hole pattern		
Article number	Instalacion lenght :L	Extension lenght:D	Load per pair : kg	"A"	"B"	"C"
OWST7021.0300	300	300	800	50	-	100
OWST7021.0350	350	350	830	50	-	150
OWST7021.0400	400	400	860	50	-	200
OWST7021.0450	450	450	890	50	-	250
OWST7021.0500	500	500	930	50	-	300
OWST7021.0550	550	550	960	50	-	350
OWST7021.0600	600	600	980	50	-	400
OWST7021.0650	650	650	1020	50	200	-
OWST7021.0700	700	700	1060	50	225	-
OWST7021.0750	750	750	1030	50	250	-
OWST7021.0800	800	800	990	50	275	-
OWST7021.0850	850	850	940	50	300	-
OWST7021.0900	900	900	860	50	325	-
OWST7021.0950	950	950	800	50	350	-
OWST7021.1000	1000	1000	750	50	375	-
OWST7021.1050	1050	1050	710	50	400	-
OWST7021.1100	1100	1100	670	50	425	-
OWST7021.1150	1150	1150	630	50	450	-
OWST7021.1200	1200	1200	600	50	475	-
OWST7021.1250	1250	1250	570	50	500	-
OWST7021.1300	1300	1300	540	50	525	-
OWST7021.1350	1350	1350	510	50	550	-
OWST7021.1400	1400	1400	490	50	575	-
OWST7021.1450	1450	1450	470	50	600	-
OWST7021.1500	1500	1500	450	50	625	-
OWST7021.1550	1550	1550	420	50	650	-
OWST7021.1600	1600	1600	400	50	675	-
OWST7021.1650	1650	1650	390	50	700	-
OWST7021.1700	1700	1700	380	100	650	-
OWST7021.1750	1750	1750	365	100	675	-
OWST7021.1800	1800	1800	350	100	700	-
OWST7021.1850	1850	1850	340	100	725	-
OWST7021.1900	1900	1900	330	100	750	-
OWST7021.1950	1950	1950	320	100	775	-
OWST7021.2000	2000	2000	310	100	800	-

Material:All steel parts.

Beams:Cold drawn carbon steel C45E+C, - EN 10277, milled raceways.

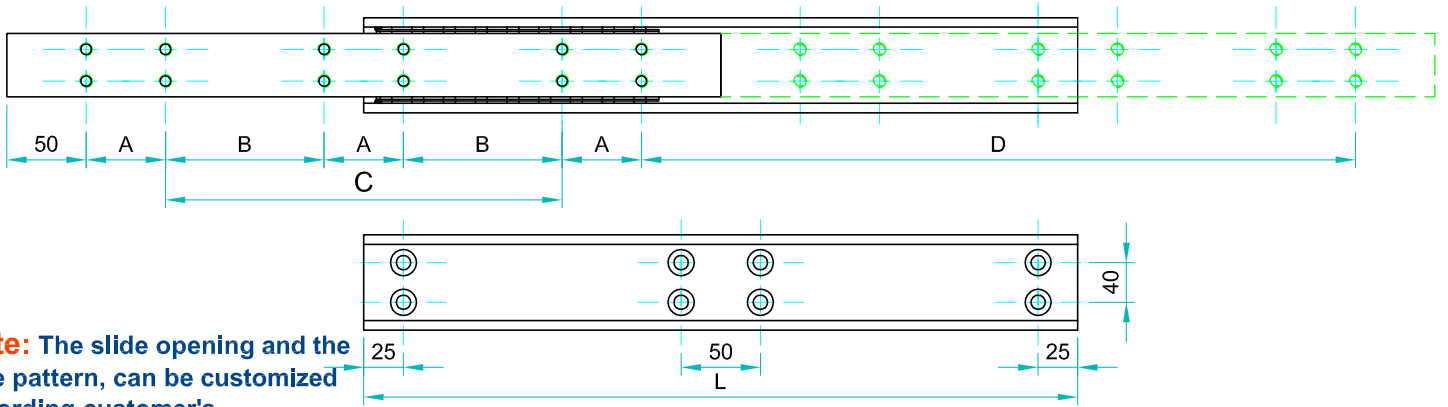
Ball cages:Zinc plated sheet steel.

Ball bearings:Chromed C85,G100: DIN 5401.

End Bolts: ASTM A307.

Steel surface protection:Electrolytic alkaline Zinc coating 8-12 microns testet in salt chamber 900 hours without white rast.

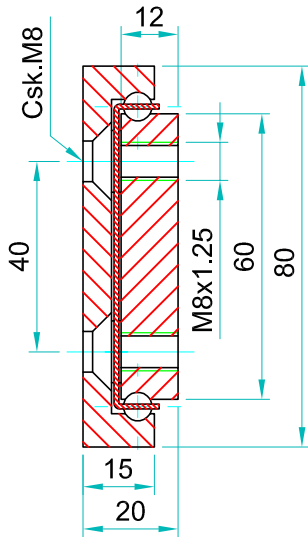
Maximum temperature:We recommend -40 to +200°C with low/high-temp lubrication and free movement to allow for steel expansion.



Note: The slide opening and the hole pattern, can be customized according customer's requirements.

Options:

- "V" - V shape channel raceways
- "F" - one outer beam countersunk
- "SB"- stainless steel ball bearings
- "SC"- stainless steel ball cages
- "SA"- stainless steel stopping pins and bolts



We recommend use the major axis.
Do not dismantle the slide !
The maximum safe load is given for a fully extended pair of slides, mounted on the major axis with a load spread uniformly along the inner beam. Flat mounted slide load capacities are reduced between 60-80%

Type: OWST-80				Hole pattern		
Article number	Instalacion lenght: L	Extension lenght: D	Load per pair : kg	"A"	"B"	"C"
OWST8020.0200	200	200	850	50		
OWST8020.0250	250	250	920	50	-	50
OWST8020.0300	300	300	960	50	-	100
OWST8020.0350	350	450	980	50	-	150
OWST8020.0400	400	400	1000	50	-	200
OWST8020.0450	450	450	1030	50	-	250
OWST8020.0500	500	500	1080	50	-	300
OWST8020.0550	550	550	1110	50	150	-
OWST8020.0600	600	600	1150	50	175	-
OWST8020.0650	650	650	1180	50	200	-
OWST8020.0700	700	700	1210	50	225	-
OWST8020.0750	750	750	1190	50	250	-
OWST8020.0800	800	800	1160	50	275	-
OWST8020.0850	850	850	1110	50	300	-
OWST8020.0900	900	900	1070	50	325	-
OWST8020.0950	950	950	1030	50	350	-
OWST8020.1000	1000	1000	970	50	375	-
OWST8020.1050	1050	1050	960	50	400	-
OWST8020.1100	1100	1100	940	50	425	-
OWST8020.1150	1150	1150	910	50	450	-
OWST8020.1200	1200	1200	880	50	475	-
OWST8020.1250	1250	1250	840	50	500	-
OWST8020.1300	1300	1300	800	50	525	-
OWST8020.1350	1350	1350	770	50	550	-
OWST8020.1400	1400	1400	740	50	575	-
OWST8020.1450	1450	1450	700	50	600	-
OWST8020.1500	1500	1500	650	50	625	-
OWST8020.1550	1550	1550	630	50	650	-
OWST8020.1600	1600	1600	600	50	675	-
OWST8020.1650	1650	1650	580	50	700	-
OWST8020.1700	1700	1700	560	100	650	-
OWST8020.1750	1750	1750	550	100	675	-
OWST8020.1800	1800	1800	530	100	700	-
OWST8020.1850	1850	1850	510	100	725	-
OWST8020.1900	1900	1900	490	100	750	-
OWST8020.1950	1950	1950	470	100	775	-
OWST8020.2000	2000	2000	450	100	800	-

Material:All steel parts.

Beams:Cold down carbon steel C45E+C, - EN 10277, milled raceways.

Ball cages:Zinc plated sheet steel.

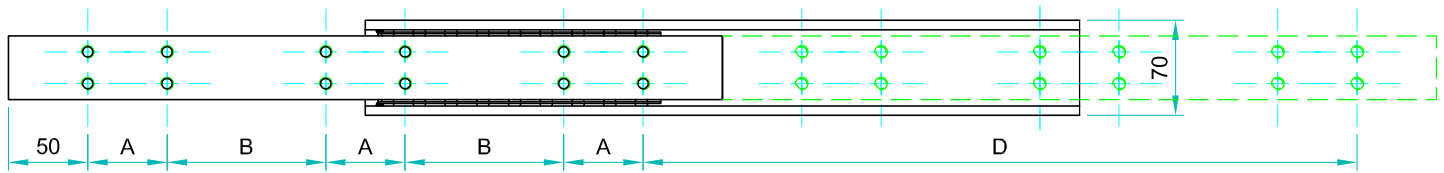
Ball bearings:Chromed C85,G100: DIN 5401.

End Bolts: ASTM A307.

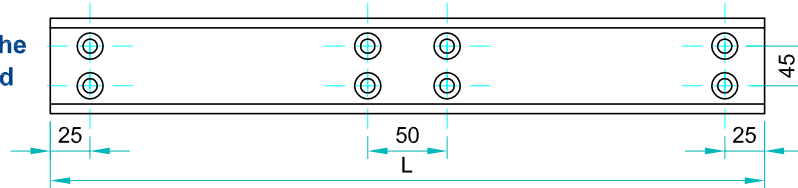
Steel surface protection:Electrolytic alkaline Zinc coating 8-12 microns testet in salt chamber 900 hours without white rast.

Maximum temperature:We recommend -40 to +200°C with low/high-temp lubrication and free movement to allow for steel expansion.



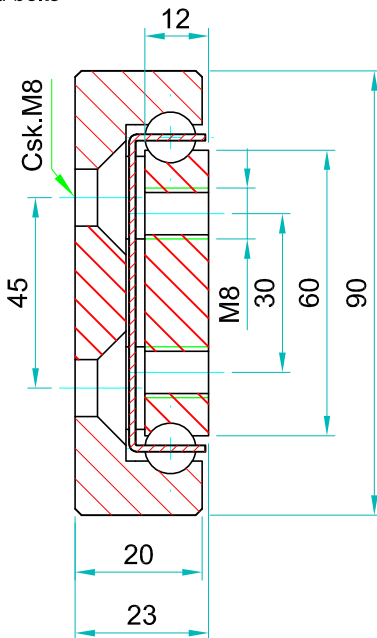


Note: The slide opening and the hole pattern, can be customized according customer's requirements.



Options:

- "V" - V shape channel raceways
- "F" - one outer beam countersunk
- "SB"- stainless steel ball bearings
- "SC"- stainless steel ball cages
- "SA"- stainless steel stopping pins and bolts



We recommend use the major axis.
Do not dismantle the slide !
The maximum safe load is given for a fully extended pair of slides, mounted on the major axis with a load spread uniformly along the inner beam. Flat mounted slide load capacities are reduced between 60-80%

Type: OWST-90				Hole pattern		
Article number	Instalacion lenght :L	Extension lenght:D	Load per pair : kg	"A"	"B"	"C"
OWST9023.0300	300	300	1260	50	-	100
OWST9023.0350	350	350	1300	50	-	150
OWST9023.0400	400	400	1380	50	-	200
OWST9023.0450	450	450	1440	50	-	250
OWST9023.0500	500	500	1480	50	-	300
OWST9023.0550	550	550	1520	50	-	350
OWST9023.0600	600	600	1550	50	-	400
OWST9023.0650	650	650	1580	50	200	-
OWST9023.0700	700	700	1600	50	225	-
OWST9023.0750	750	750	1560	50	250	-
OWST9023.0800	800	800	1500	50	275	-
OWST9023.0850	850	850	1440	50	300	-
OWST9023.0900	900	900	1360	50	325	-
OWST9023.0950	950	950	1320	50	350	-
OWST9023.1000	1000	1000	1240	50	375	-
OWST9023.1050	1050	1050	1180	50	400	-
OWST9023.1100	1100	1100	1100	50	425	-
OWST9023.1150	1150	1150	1010	50	450	-
OWST9023.1200	1200	1200	950	50	475	-
OWST9023.1250	1250	1250	900	50	500	-
OWST9023.1300	1300	1300	850	50	525	-
OWST9023.1350	1350	1350	810	50	550	-
OWST9023.1400	1400	1400	780	50	575	-
OWST9023.1450	1450	1450	730	50	600	-
OWST9023.1500	1500	1500	690	50	625	-
OWST9023.1550	1550	1550	650	50	650	-
OWST9023.1600	1600	1600	630	50	675	-
OWST9023.1650	1650	1650	610	50	700	-
OWST9023.1700	1700	1700	600	100	650	-
OWST9023.1750	1750	1750	590	100	675	-
OWST9023.1800	1800	1800	580	100	700	-
OWST9023.1850	1850	1850	565	100	725	-
OWST9023.1900	1900	1900	545	100	750	-
OWST9023.1950	1950	1950	525	100	775	-
OWST9023.2000	2000	2000	510	100	800	-

Material:All steel parts.

Beams:Cold drawn carbon steel C45E+C, - EN 10277, milled raceways.

Ball cages:Zinc plated sheet steel.

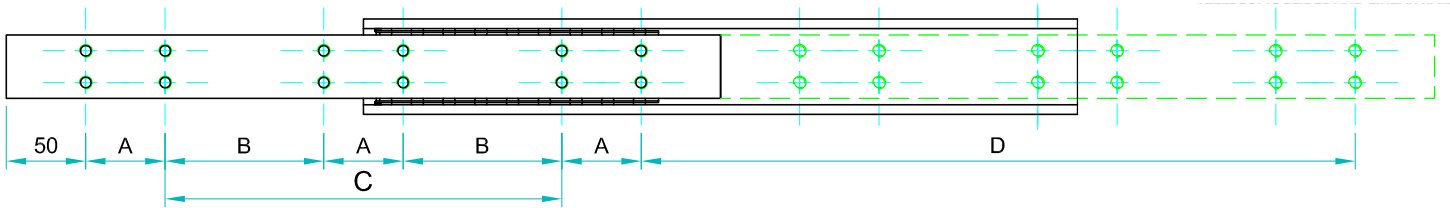
Ball bearings:Chromed C85,G100: DIN 5401.

End Bolts: ASTM A307.

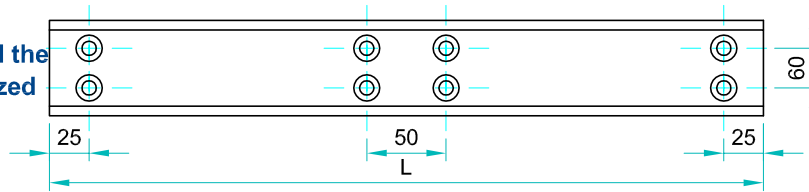
Steel surface protection:Electrolytic alkaline Zinc coating 8-12 microns testet in salt chamber 900 hours without white rast.

Maximum temperature:We recommend -40 to +200°C with low/high-temp lubrication and free movement to allow for steel expansion.



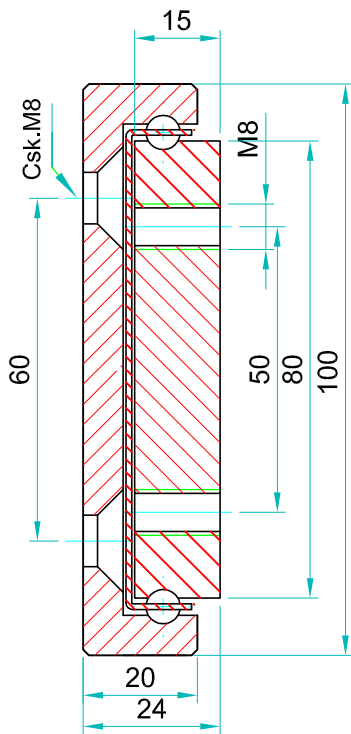


Note: The slide opening and the hole pattern, can be customized according customer's requirements.



Options:

- "V" - V shape channel raceways
- "F" - one outer beam countersunk
- "SB"- stainless steel ball bearings
- "SC"- stainless steel ball cages
- "SA"- stainless steel stopping pins and bolts



We recommend use the major axis.
Do not dismantle the slide !
The maximum safe load is given for a fully extended pair of slides, mounted on the major axis with a load spread uniformly along the inner beam. Flat mounted slide load capacities are reduced between 60-80%

Type: OWST-100				Hole pattern		
Article number	Instalacion lenght :L	Extension lenght:D	Load per pair : kg	"A"	"B"	"C"
OWST9023.0300	300	300	1410	50	-	100
OWST9023.0350	350	350	1450	50	-	150
OWST9023.0400	400	400	1510	50	-	200
OWST9023.0450	450	450	1570	50	-	250
OWST9023.0500	500	500	1630	50	-	300
OWST9023.0550	550	550	1670	50	-	350
OWST9023.0600	600	600	1700	50	-	400
OWST9023.0650	650	650	1730	50	200	-
OWST9023.0700	700	700	1750	50	225	-
OWST9023.0750	750	750	1690	50	250	-
OWST9023.0800	800	800	1630	50	275	-
OWST9023.0850	850	850	1550	50	300	-
OWST9023.0900	900	900	1450	50	325	-
OWST9023.0950	950	950	1400	50	350	-
OWST9023.1000	1000	1000	1320	50	375	-
OWST9023.1050	1050	1050	1260	50	400	-
OWST9023.1100	1100	1100	1210	50	425	-
OWST9023.1150	1150	1150	1160	50	450	-
OWST9023.1200	1200	1200	1100	50	475	-
OWST9023.1250	1250	1250	1070	50	500	-
OWST9023.1300	1300	1300	1030	50	525	-
OWST9023.1350	1350	1350	970	50	550	-
OWST9023.1400	1400	1400	940	50	575	-
OWST9023.1450	1450	1450	900	50	600	-
OWST9023.1500	1500	1500	860	50	625	-
OWST9023.1550	1550	1550	830	50	650	-
OWST9023.1600	1600	1600	790	50	675	-
OWST9023.1650	1650	1650	760	50	700	-
OWST9023.1700	1700	1700	740	100	650	-
OWST9023.1750	1750	1750	730	100	675	-
OWST9023.1800	1800	1800	710	100	700	-
OWST9023.1850	1850	1850	700	100	725	-
OWST9023.1900	1900	1900	690	100	750	-
OWST9023.1950	1950	1950	680	100	775	-
OWST9023.2000	2000	2000	670	100	800	-

Material:All steel parts.

Beams:Cold drawn carbon steel C45E+C, - EN 10277, milled raceways.

Ball cages:Zinc plated sheet steel.

Ball bearings:Chromed C85,G100: DIN 5401.

End Bolts: ASTM A307.

Steel surface protection:Electrolytic alkaline Zinc coating 8-12 microns testet in salt chamber 900 hours without white rast.

Maximum temperature:We recommend -40 to +200°C with low/high-temp lubrication and free movement to allow for steel expansion.

