



FEDS

TELESCOPIC SLIDES AND LINEAR RAILS

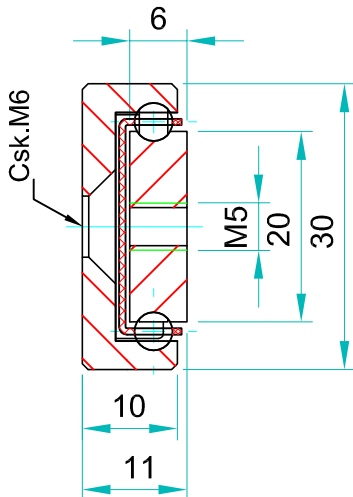
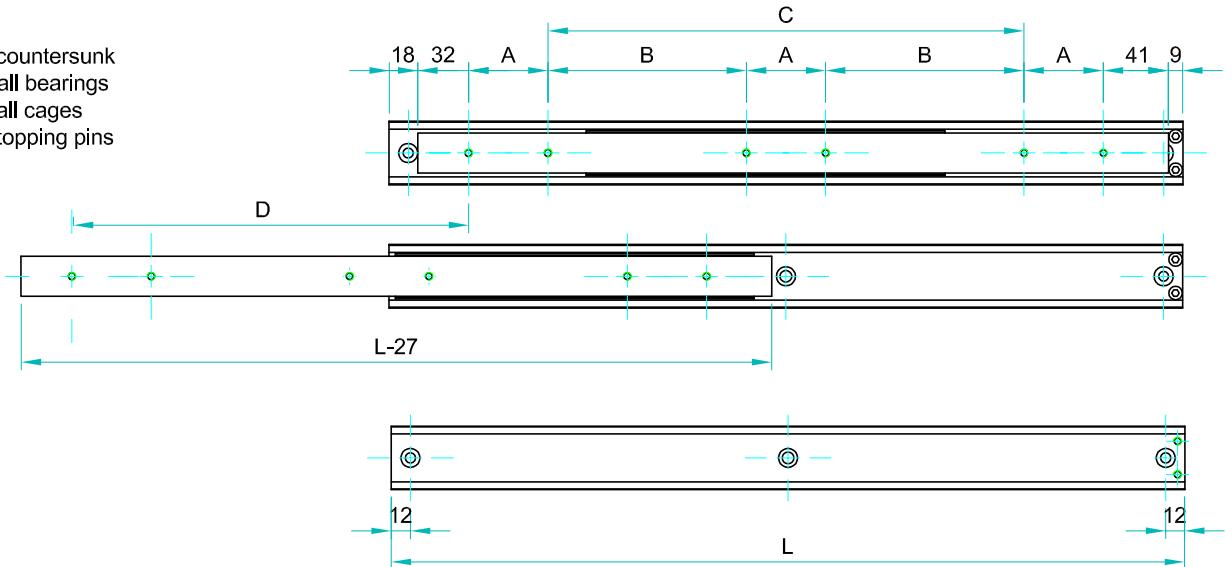
Partial extension

Slide type: **OWS**

Note: The slide opening and the hole pattern, can be customized according customer's requirements.

Options:

- "F" - one outer beam countersunk
- "SB"- stainless steel ball bearings
- "SC"- stainless steel ball cages
- "SA"- stainless steel stopping pins and bolts



Type: OWS-30				Hole pattern		
Article number	Instalacion lenght: L	Extension lenght: D	Load per pair: kg	"A"	"B"	"C"
OWS3011.0150	150	75	80	50	-	-
OWS3011.0200	200	100	90	50	-	-
OWS3011.0250	250	125	110	50	-	50
OWS3011.0300	300	150	130	50	-	100
OWS3011.0350	350	175	150	50	-	150
OWS3011.0400	400	200	180	50	-	200
OWS3011.0450	450	225	240	50	-	250
OWS3011.0500	500	250	260	50	-	300
OWS3011.0550	550	275	270	50	150	-
OWS3011.0600	600	300	280	50	175	-
OWS3011.0650	650	325	260	50	200	-
OWS3011.0700	700	350	240	50	225	-
OWS3011.0750	750	375	220	50	250	-
OWS3011.0800	800	400	200	50	275	-
OWS3011.0850	850	425	180	50	300	-
OWS3011.0900	900	450	160	50	325	-
OWS3011.0950	950	475	140	50	350	-
OWS3011.1000	1000	500	120	50	375	-

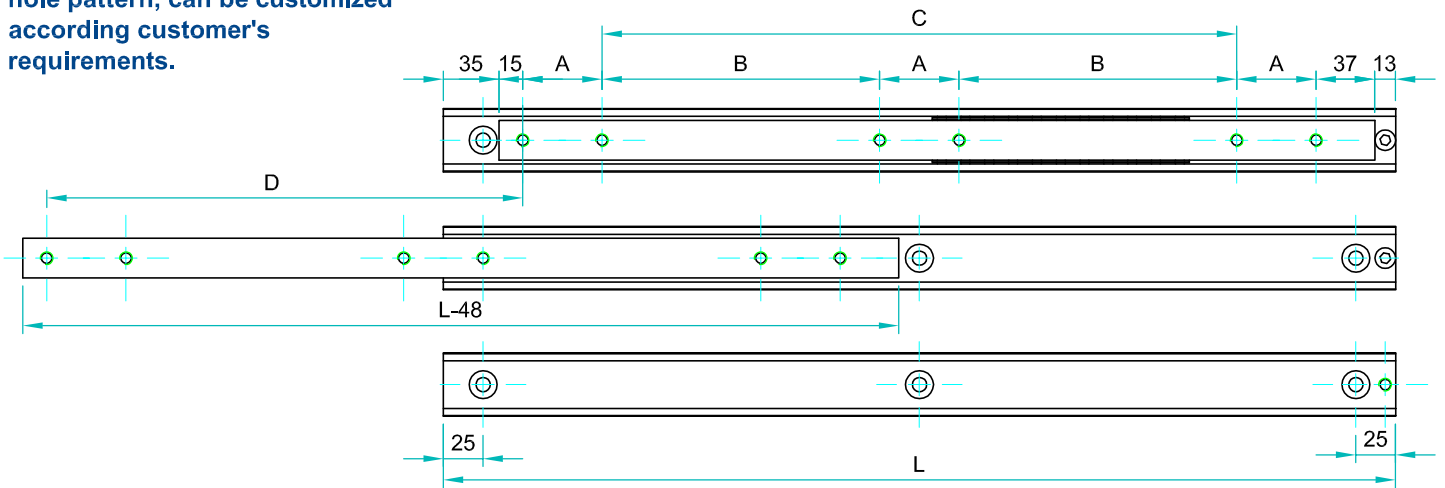


We recommend use the major axis.
Do not dismantle the slide !
The maximum safe load is given for a fully extended pair of slides, mounted on the major axis with a load spread uniformly along the inner beam
Flat mounted slide load capacities are reduced between 60-80%

Material:All steel parts.
Beams:Cold drawn carbon steel C45E+C, - EN 10277, milled raceways.
Ball cages:Zinc plated sheet steel.
Ball bearings:Chromed C85,G100: DIN 5401.
End Bolts: ASTM A307.
Steel surface protection:Electrolytic alkaline Zinc coating 8-12 microns testet in salt chamber 900 hours without white rast.
Maximum temperature:We recommend -40 to +200°C with low/high-temp lubrication and free movement to allow for steel expansion.

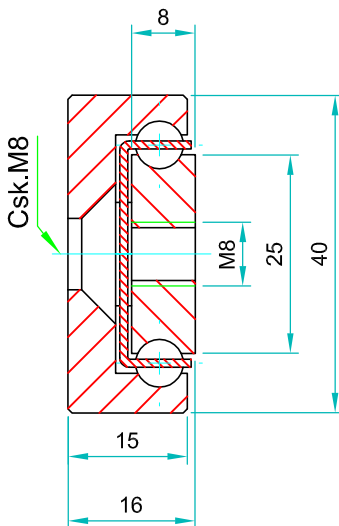


hole pattern, can be customized according customer's requirements.



Options:

- "V" - V shape channel raceways
- "F" - one outer beam countersunk
- "SB"- stainless steel ball bearings
- "SC"- stainless steel ball cages
- "SA"- stainless steel stopping pins and bolts



We recommend use the major axis.
Do not dismantle the slide !
The maximum safe load is given for a fully extended pair of slides, mounted on the major axis with a load spread uniformly along the inner beam. Flat mounted slide load capacities are reduced between 60-80%

Type:OWS-40				Hole pattern		
Article number	Instalacion lenght: L	Extension lenght :D	Load per pair :kg	"A"	"B"	"C"
OWS4016.0200	200	100	240	50	-	-
OWS4016.0250	250	125	250	50	-	50
OWS4016.0300	300	150	260	50	-	100
OWS4016.0350	350	175	280	50	-	150
OWS4016.0400	400	200	300	50	-	200
OWS4016.0450	450	225	315	50	-	250
OWS4016.0500	500	250	330	50	-	300
OWS4016.0550	550	275	340	50	150	-
OWS4016.0600	600	300	350	50	175	-
OWS4016.0650	650	325	355	50	200	-
OWS4016.0700	700	350	360	50	225	-
OWS4016.0750	750	375	345	50	250	-
OWS4016.0800	800	400	335	50	275	-
OWS4016.0850	850	425	320	50	300	-
OWS4016.0900	900	450	305	50	325	-
OWS4016.0950	950	475	280	50	350	-
OWS4016.1000	1000	500	265	50	375	-
OWS4016.1050	1050	525	250	50	400	-
OWS4016.1100	1100	550	240	50	425	-
OWS4016.1150	1150	575	230	50	450	-
OWS4016.1200	1200	600	220	50	475	-
OWS4016.1250	1250	625	200	50	500	
OWS4016.1300	1300	650	180	50	525	
OWS4016.1350	1350	675	160	50	550	
OWS4016.1400	1400	700	140	50	575	
OWS4016.1450	1450	725	120	50	600	
OWS4016.1500	1500	750	100	50	625	
OWS4016.1550	1550	775	80	50	650	
OWS4016.1600	1600	800	60	50	675	

Material:All steel parts.

Beams:Cold drawn carbon steel C45E+C, - EN 10277, milled raceways.

Ball cages:Zinc plated sheet steel.

Ball bearings:Chromed C85,G100: DIN 5401.

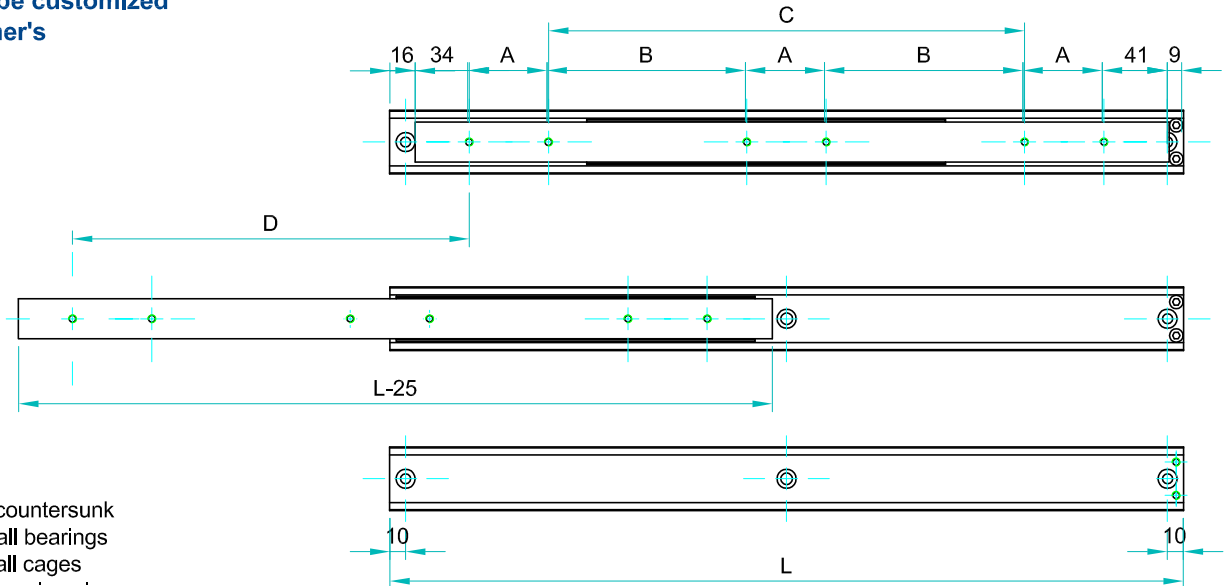
End Bolts: ASTM A307.

Steel surface protection:Electrolytic alkaline Zinc coating 8-12 microns testet in salt chamber 900 hours without white rast.

Maximum temperature:We recommend -40 to +200°C with low/high-temp lubrication and free movement to allow for steel expansion.

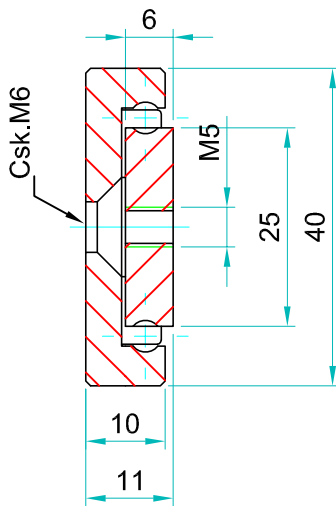


Note: The slide opening and the hole pattern, can be customized according customer's requirements.



Options:

- "F" - one outer beam countersunk
- "SB"- stainless steel ball bearings
- "SC"- stainless steel ball cages
- "SA"- stainless steel stopping pins and bolts



We recommend use the major axis.
Do not dismantle the slide !
The maximum safe load is given for a fully extended pair of slides, mounted on the major axis with a load spread uniformly along the inner beam. Flat mounted slide load capacities are reduced between 60-80%

Type: OWS-45				Hole pattern		
Article number	Instalacion lenght: L	Extension lenght: D	Load per pair: kg	"A"	"B"	"C"
OWS4511.0150	150	75	80	50	-	-
OWS4511.0200	200	100	90	50	-	-
OWS4511.0250	250	125	110	50	-	50
OWS4511.0300	300	150	130	50	-	100
OWS4511.0350	350	175	150	50	-	150
OWS4511.0400	400	200	180	50	-	200
OWS4511.0450	450	225	240	50	-	250
OWS4511.0500	500	250	260	50	-	300
OWS4511.0550	550	275	270	0	150	-
OWS4511.0600	600	300	260	50	175	-
OWS4511.0650	650	325	250	50	200	-
OWS4511.0700	700	350	240	50	225	-
OWS4511.0750	750	375	230	50	250	-
OWS4511.0800	800	400	220	50	275	-
OWS4511.0850	850	425	210	50	300	-
OWS4511.0900	900	450	200	50	325	-
OWS4511.0950	950	475	190	50	350	-
OWS4511.1000	1000	500	180	50	375	-
OWS4511.1050	1050	525	160	50	400	-
OWS4511.1100	1100	550	140	50	425	-
OWS4511.1150	1150	575	120	50	450	-
OWS4511.1200	1200	600	100	50	575	-

Material:All steel parts.

Beams:Cold drawn carbon steel C45E+C, - EN 10277, milled raceways.

Ball cages:Zinc plated sheet steel.

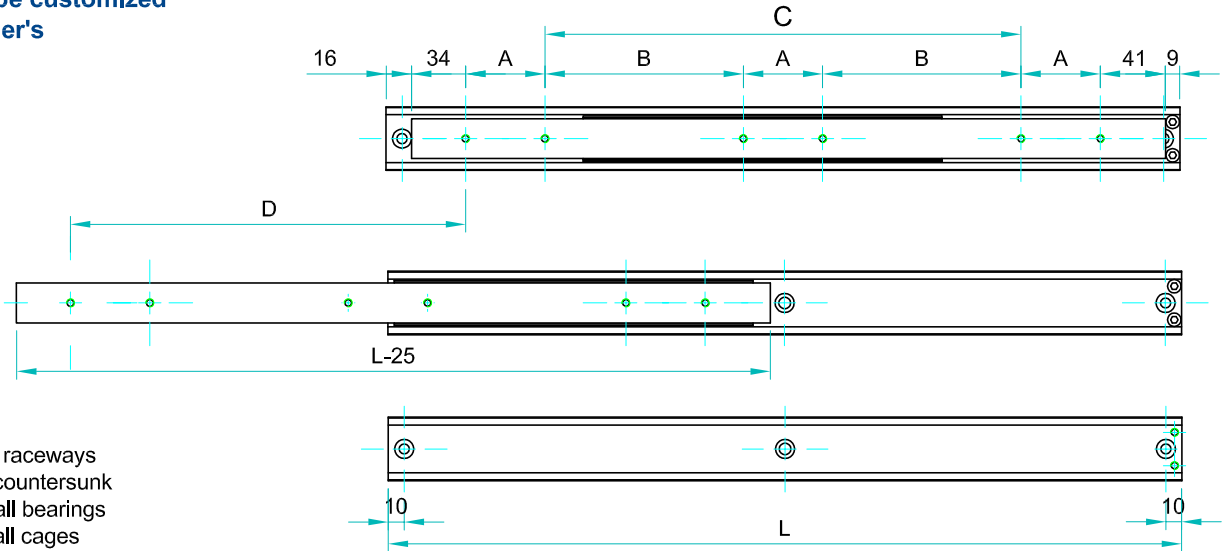
Ball bearings:Chromed C85,G100: DIN 5401.

End Bolts: ASTM A307.

Steel surface protection:Electrolytic alkaline Zinc coating 8-12 microns testet in salt chamber 900 hours without white rast.

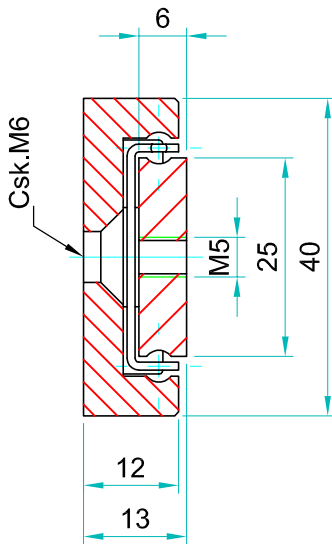
Maximum temperature:We recommend -40 to +200°C with low/high-temp lubrication and free movement to allow for steel expansion.

Note: The slide opening and the hole pattern, can be customized according customer's requirements.



Options:

- "V" - V shape channel raceways
- "F" - one outer beam countersunk
- "SB"- stainless steel ball bearings
- "SC"- stainless steel ball cages
- "SA"- stainless steel stopping pins and bolts



We recommend use the major axis.
Do not dismantle the slide !
The maximum safe load is given for a fully extended pair of slides, mounted on the major axis with a load spread uniformly along the inner beam. Flat mounted slide load capacities are reduced between 60-80%

Type: OWS-48				Hole pattern		
Article number	Instalacion lenght: L	Extension lenght: D	Load per pair: kg	"A"	"B"	"C"
OWS4813.0150	150	75	80	50	-	-
OWS4813.0200	200	100	90	50	-	-
OWS4813.0250	250	125	110	50	-	50
OWS4813.0300	300	150	130	50	-	100
OWS4813.0350	350	175	150	50	-	150
OWS4813.0400	400	200	180	50	-	200
OWS4813.0450	450	225	240	50	-	250
OWS4813.0500	500	250	260	50	-	300
OWS4813.0550	550	275	280	50	150	-
OWS4813.0600	600	300	270	50	175	-
OWS4813.0650	650	325	260	50	200	-
OWS4813.0700	700	350	250	50	225	-
OWS4813.0750	750	375	240	50	250	-
OWS4813.0800	800	400	230	50	275	-
OWS4813.0850	850	425	220	50	300	-
OWS4813.0900	900	450	210	50	325	-
OWS4813.0950	950	475	200	50	350	-
OWS4813.1000	1000	500	190	50	375	-
OWS4813.1050	1050	525	170	50	400	-
OWS4813.1100	1100	550	150	50	425	-
OWS4813.1150	1150	575	130	50	450	-
OWS4813.1200	1200	600	110	50	475	-

Material:All steel parts.

Beams:Cold drawn carbon steel C45E+C, - EN 10277, milled raceways.

Ball cages:Zinc plated sheet steel.

Ball bearings:Chromed C85,G100: DIN 5401.

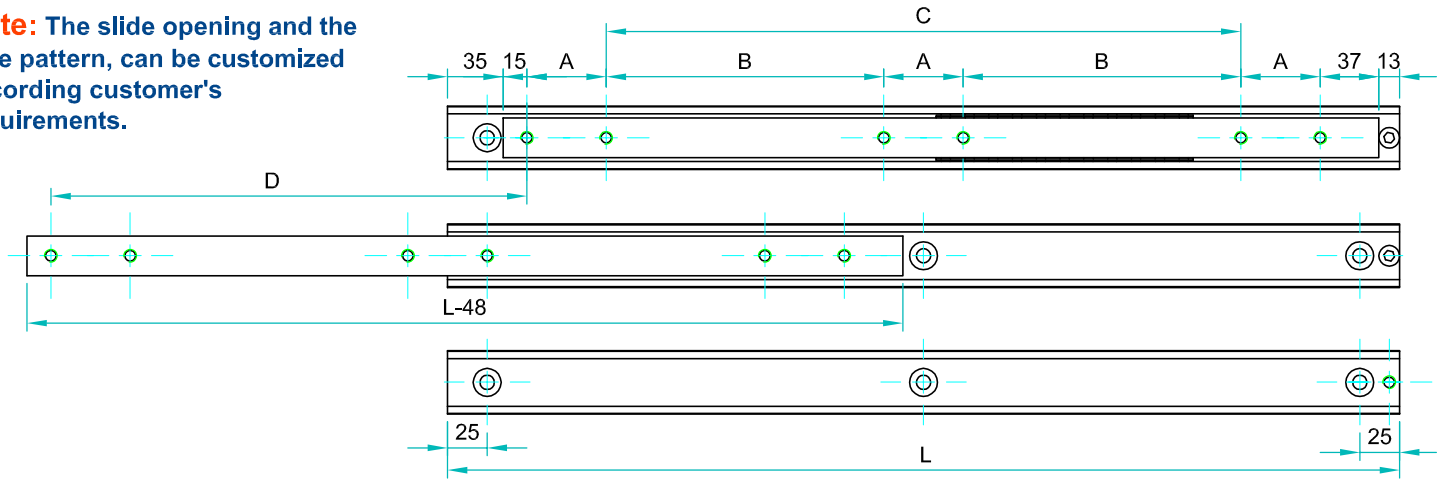
End Bolts: ASTM A307.

Steel surface protection:Electrolytic alkaline Zinc coating 8-12 microns testet in salt chamber 900 hours without white rast.

Maximum temperature:We recommend -40 to +200°C with low/high-temp lubrication and free movement to allow for steel expansion.

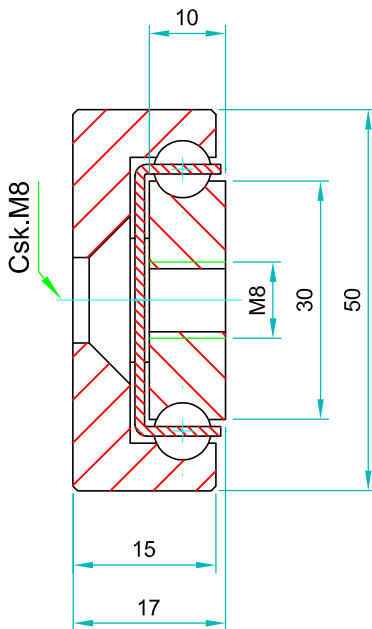


Note: The slide opening and the hole pattern, can be customized according customer's requirements.



Options:

- "V" - V shape channel raceways
- "F" - one outer beam countersunk
- "SB"- stainless steel ball bearings
- "SC"- stainless steel ball cages
- "SA"- stainless steel stopping pins and bolts



We recommend use the major axis.
Do not dismantle the slide !
The maximum safe load is given for a fully extended pair of slides, mounted on the major axis with a load spread uniformly along the inner beam. Flat mounted slide load capacities are reduced between 60-80%

Type:OWS-50				Hole pattern		
Article number	Instalacion lenght: L	Extension lenght: D	Load per pair: kg	"A"	"B"	"C"
OWS1517.0200	200	100	300	50	-	-
OWS1517.0250	250	125	320	50	-	50
OWS1517.0300	300	150	340	50	-	100
OWS1517.0350	350	175	355	50	-	150
OWS1517.0400	400	200	370	50	-	200
OWS1517.0450	450	225	380	50	-	250
OWS1517.0500	500	250	400	50	-	300
OWS1517.0550	550	275	430	50	150	-
OWS1517.0600	600	300	450	50	175	-
OWS1517.0650	650	325	440	50	200	-
OWS1517.0700	700	350	420	50	225	-
OWS1517.0750	750	375	410	50	250	-
OWS1517.0800	800	400	400	50	275	-
OWS1517.0850	850	425	390	50	300	-
OWS1517.0900	900	450	375	50	325	-
OWS1517.0950	950	475	360	50	350	-
OWS1517.1000	1000	500	340	50	375	-
OWS1517.1050	1050	525	320	50	400	-
OWS1517.1100	1100	550	300	50	425	-
OWS1517.1150	1150	575	290	50	450	-
OWS1517.1200	1200	600	280	50	475	-
OWS1517.1250	1250	625	260	50	500	-
OWS1517.1300	1300	650	240	50	525	-
OWS1517.1350	1350	675	230	50	550	-
OWS1517.1400	1400	700	220	50	575	-
OWS1517.1450	1450	725	210	50	600	-
OWS1517.1500	1500	750	200	50	625	-
OWS1517.1550	1550	775	190	50	650	-
OWS1517.1600	1600	800	180	50	675	-
OWS1517.1250	1650	825	170	50	500	-
OWS1517.1300	1700	850	155	100	650	-
OWS1517.1350	1750	875	140	100	675	-
OWS1517.1400	1800	900	120	100	700	-
OWS1517.1450	1850	925	100	100	725	-
OWS1517.1500	1900	950	80	100	750	-
OWS1517.1550	1950	975	60	100	775	-
OWS1517.1600	2000	1000	40	100	800	-

Material:All steel parts.

Beams:Cold drawn carbon steel C45E+C, - EN 10277, milled raceways.

Ball cages:Zinc plated sheet steel.

Ball bearings:Chromed C85,G100: DIN 5401.

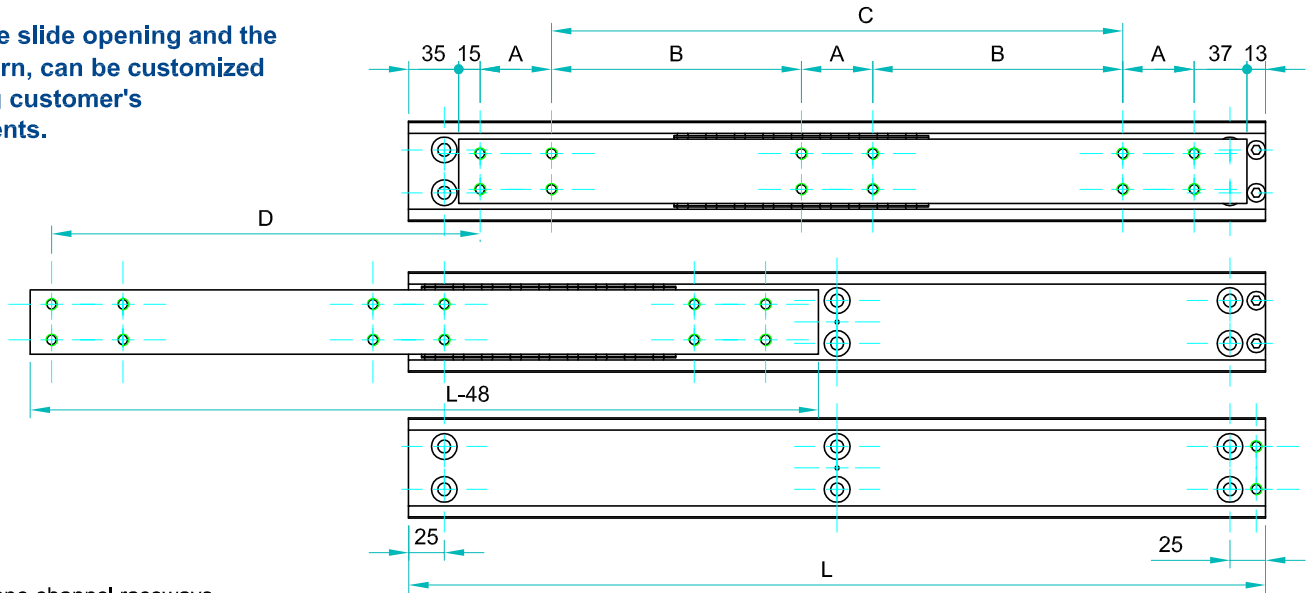
End Bolts: ASTM A307.

Steel surface protection:Electrolytic alkaline Zinc coating 8-12 microns testet in salt chamber 900 hours without white rast.

Maximum temperature:We recommend -40 to +200°C with low/high-temp lubrication and free movement to allow for steel expansion.

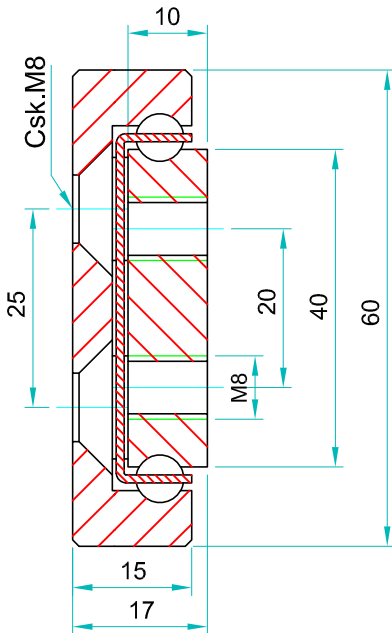


Note: The slide opening and the hole pattern, can be customized according customer's requirements.



Options:

- "V" - V shape channel raceways
- "F" - one outer beam countersunk
- "SB"- stainless steel ball bearings
- "SC"- stainless steel ball cages
- "SA"- stainless steel stopping pins and bolts



We recommend use the major axis.
Do not dismantle the slide !
The maximum safe load is given for a fully extended pair of slides, mounted on the major axis with a load spread uniformly along the inner beam. Flat mounted slide load capacities are reduced between 60-80%

Type: OWS-60				Hole pattern		
Article number	Instalacion lenght :L	Extension lenght:D	Load per pair : kg	"A"	"B"	"C"
OWS6017.0300	300	150	520	50	-	100
OWS6017.0350	350	175	560	50	-	150
OWS6017.0400	400	200	610	50	-	200
OWS6017.0450	450	225	660	50	-	250
OWS6017.0500	500	250	710	50	-	300
OWS6017.0550	550	275	720	50	-	350
OWS6017.0600	600	300	730	50	-	400
OWS6017.0650	650	325	740	50	200	-
OWS6017.0700	700	350	750	50	225	-
OWS6017.0750	750	375	740	50	250	-
OWS6017.0800	800	400	720	50	275	-
OWS6017.0850	850	425	700	50	300	-
OWS6017.0900	900	450	680	50	325	-
OWS6017.0950	950	475	660	50	350	-
OWS6017.1000	1000	500	640	50	375	-
OWS6017.1050	1050	525	610	50	400	-
OWS6017.1100	1100	550	580	50	425	-
OWS6017.1150	1150	575	550	50	450	-
OWS6017.1200	1200	600	520	50	475	-
OWS6017.1250	1250	625	490	50	500	-
OWS6017.1300	1300	650	480	50	525	-
OWS6017.1350	1350	675	460	50	550	-
OWS6017.1400	1400	700	440	50	575	-
OWS6017.1450	1450	725	420	50	600	-
OWS6017.1500	1500	750	390	50	625	-
OWS6017.1550	1550	775	360	50	650	-
OWS6017.1600	1600	800	340	50	675	-
OWS6017.1650	1650	825	310	50	700	-
OWS6017.1700	1700	850	280	100	650	-
OWS6017.1750	1750	875	250	100	675	-
OWS6017.1800	1800	900	220	100	700	-
OWS6017.1850	1850	925	190	100	725	-
OWS6017.1900	1900	950	160	100	750	-
OWS6017.1950	1950	975	130	100	775	-
OWS6017.2000	2000	1000	100	100	800	-

Material:All steel parts.

Beams:Cold drawn carbon steel C45E+C, - EN 10277, milled raceways.

Ball cages:Zinc plated sheet steel.

Ball bearings:Chromed C85,G100: DIN 5401.

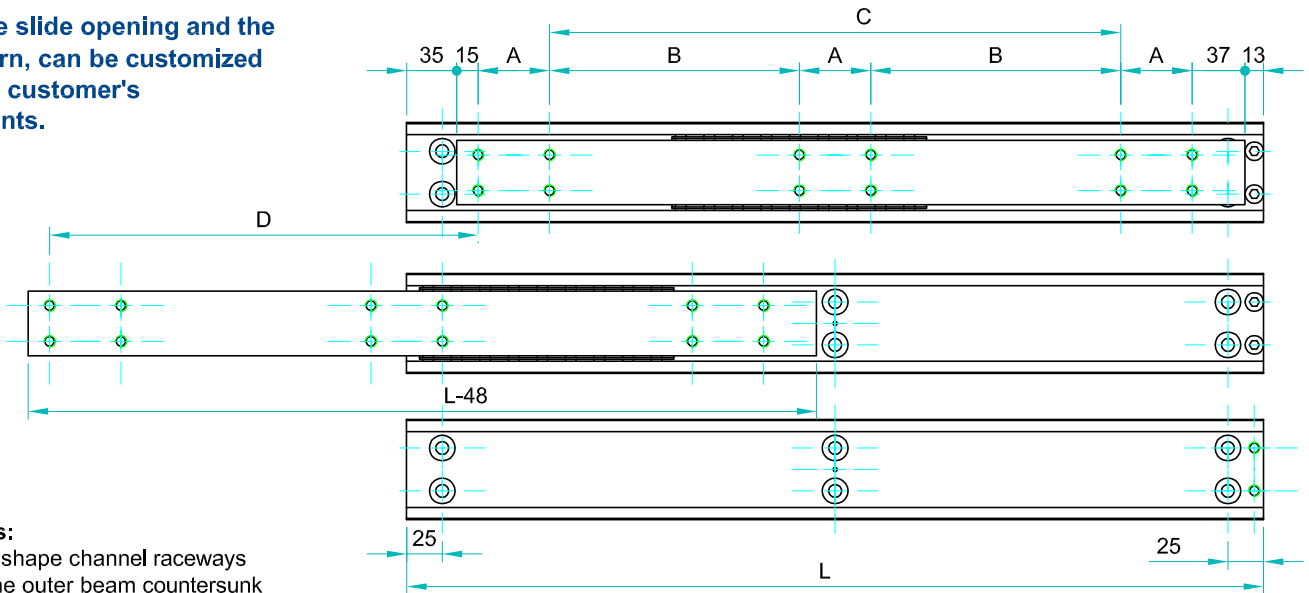
End Bolts: ASTM A307.

Steel surface protection:Electrolytic alkaline Zinc coating 8-12 microns testet in salt chamber 900 hours without white rast.

Maximum temperature:We recommend -40 to +200°C with low/high-temp lubrication and free movement to allow for steel expansion.

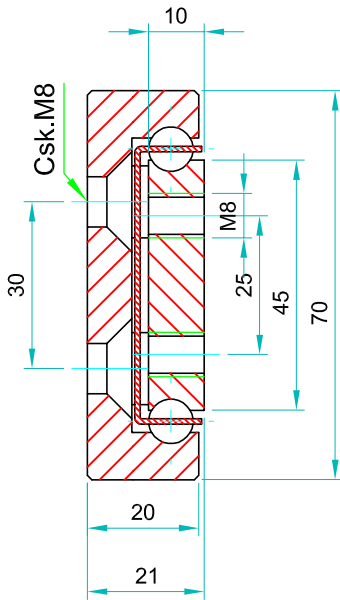


Note: The slide opening and the hole pattern, can be customized according customer's requirements.



Options:

- "V" - V shape channel raceways
- "F" - one outer beam countersunk
- "SB"- stainless steel ball bearings
- "SC"- stainless steel ball cages
- "SA"- stainless steel stopping pins and bolts



We recommend use the major axis.
Do not dismantle the slide !
The maximum safe load is given for a fully extended pair of slides, mounted on the major axis with a load spread uniformly along the inner beam. Flat mounted slide load capacities are reduced between 60-80%

Type: OWS-70				Hole pattern		
Article number	Instalacion lenght :L	Extension lenght:D	Load per pair : kg	"A"	"B"	"C"
OWS7021.0300	300	150	800	50	-	100
OWS7021.0350	350	175	830	50	-	150
OWS7021.0400	400	200	860	50	-	200
OWS7021.0450	450	225	890	50	-	250
OWS7021.0500	500	250	930	50	-	300
OWS7021.0550	550	275	960	50	-	350
OWS7021.0600	600	300	980	50	-	400
OWS7021.0650	650	325	1020	50	200	-
OWS7021.0700	700	350	1060	50	225	-
OWS7021.0750	750	375	1030	50	250	-
OWS7021.0800	800	400	990	50	275	-
OWS7021.0850	850	425	940	50	300	-
OWS7021.0900	900	450	860	50	325	-
OWS7021.0950	950	475	800	50	350	-
OWS7021.1000	1000	500	750	50	375	-
OWS7021.1050	1050	525	710	50	400	-
OWS7021.1100	1100	550	670	50	425	-
OWS7021.1150	1150	575	630	50	450	-
OWS7021.1200	1200	600	600	50	475	-
OWS7021.1250	1250	625	570	50	500	-
OWS7021.1300	1300	650	540	50	525	-
OWS7021.1350	1350	675	510	50	550	-
OWS7021.1400	1400	700	490	50	575	-
OWS7021.1450	1450	725	470	50	600	-
OWS7021.1500	1500	750	450	50	625	-
OWS7021.1550	1550	775	420	50	650	-
OWS7021.1600	1600	800	400	50	675	-
OWS7021.1650	1650	825	390	50	700	-
OWS7021.1700	1700	850	380	100	650	-
OWS7021.1750	1750	875	365	100	675	-
OWS7021.1800	1800	900	350	100	700	-
OWS7021.1850	1850	925	340	100	725	-
OWS7021.1900	1900	950	330	100	750	-
OWS7021.1950	1950	975	320	100	775	-
OWS7021.2000	2000	1000	310	100	800	-

Material:All steel parts.

Beams:Cold drawn carbon steel C45E+C, - EN 10277, milled raceways.

Ball cages:Zinc plated sheet steel.

Ball bearings:Chromed C85,G100: DIN 5401.

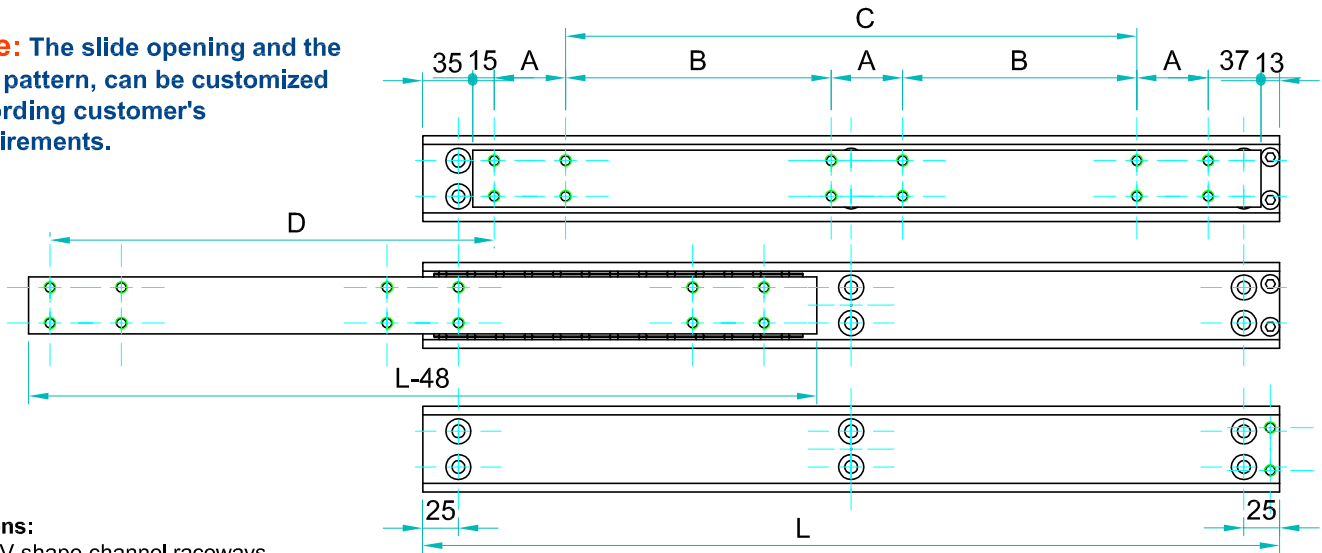
End Bolts: ASTM A307.

Steel surface protection:Electrolytic alkaline Zinc coating 8-12 microns testet in salt chamber 900 hours without white rast.

Maximum temperature:We recommend -40 to +200°C with low/high-temp lubrication and free movement to allow for steel expansion.

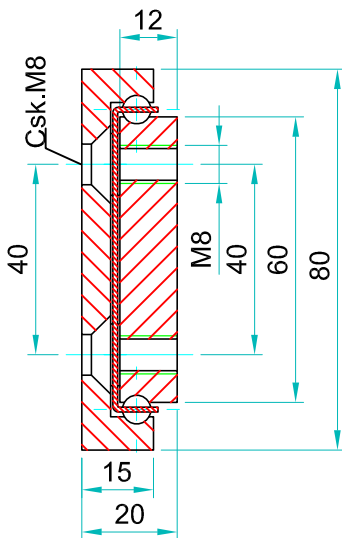


Note: The slide opening and the hole pattern, can be customized according customer's requirements.



Options:

- "V" - V shape channel raceways
- "F" - one outer beam countersunk
- "SB"- stainless steel ball bearings
- "SC"- stainless steel ball cages
- "SA"- stainless steel stopping pins and bolts



Type: OWS-80				Hole pattern		
Article number	Instalacion length: L	Extension length: D	Load per pair : kg	"A"	"B"	"C"
OWS8020.0200	200	100	850			
OWS8020.0250	250	125	920	50	-	50
OWS8020.0300	300	150	960	50	-	100
OWS8020.0350	350	175	980	50	-	150
OWS8020.0400	400	200	1000	50	-	200
OWS8020.0450	450	225	1030	50	-	250
OWS8020.0500	500	250	1080	50	-	300
OWS8020.0550	550	275	1110	50	150	-
OWS8020.0600	600	600	1150	50	175	-
OWS8020.0650	650	325	1180	50	200	-
OWS8020.0700	700	350	1210	50	225	-
OWS8020.0750	750	375	1190	50	250	-
OWS8020.0800	800	400	1160	50	275	-
OWS8020.0850	850	425	1110	50	300	-
OWS8020.0900	900	450	1070	50	325	-
OWS8020.0950	950	475	1030	50	350	-
OWS8020.1000	1000	500	970	50	375	-



We recommend use the major axis.
Do not dismantle the slide !
The maximum safe load is given for a fully extended pair of slides, mounted on the major axis with a load spread uniformly along the inner beam. Flat mounted slide load capacities are reduced between 60-80%

Material:All steel parts.

Beams:Cold drawn carbon steel C45E+C, - EN 10277, milled raceways.

Ball cages:Zinc plated sheet steel.

Ball bearings:Chromed C85,G100: DIN 5401.

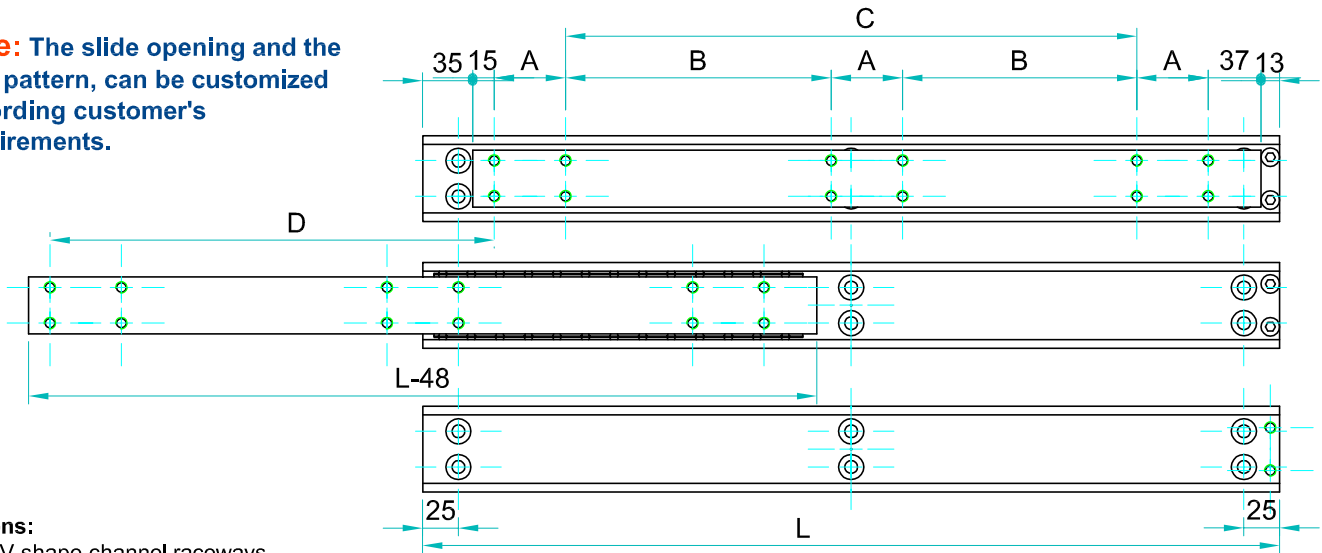
End Bolts: ASTM A307.

Steel surface protection:Electrolytic alkaline Zinc coating 8-12 microns testet in salt chamber 900 hours without white rast.

Maximum temperature:We recommend -40 to +200°C with low/high-temp lubrication and free movement to allow for steel expansion.

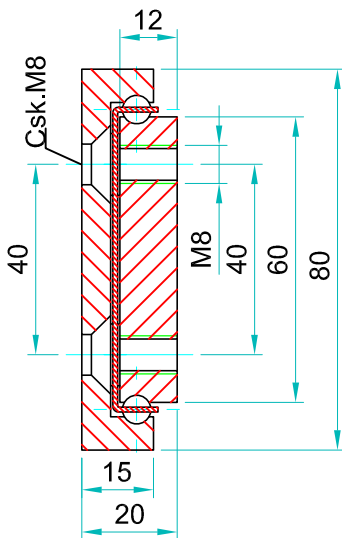


Note: The slide opening and the hole pattern, can be customized according customer's requirements.



Options:

- "V" - V shape channel raceways
- "F" - one outer beam countersunk
- "SB"- stainless steel ball bearings
- "SC"- stainless steel ball cages
- "SA"- stainless steel stopping pins and bolts



Type: OWS-80				Hole pattern		
Article number	Instalacion lenght: L	Extension lenght: D	Load per pair : kg	"A"	"B"	"C"
OWS8020.1050	1050	525	960	50	400	-
OWS8020.1100	1100	550	940	50	425	-
OWS8020.1150	1150	575	910	50	450	-
OWS8020.1200	1200	600	880	50	475	-
OWS8020.1250	1250	625	840	50	500	-
OWS8020.1300	1300	650	800	50	525	-
OWS8020.1350	1350	675	770	50	550	-
OWS8020.1400	1400	700	740	50	575	-
OWS8020.1450	1450	725	700	50	600	-
OWS8020.1500	1500	750	650	50	625	-
OWS8020.1550	1550	775	630	50	650	-
OWS8020.1600	1600	800	600	50	675	-
OWS8020.1650	1650	825	580	50	700	-
OWS8020.1700	1700	850	560	100	650	-
OWS8020.1750	1750	875	550	100	675	-
OWS8020.1800	1800	900	530	100	700	-
OWS8020.1850	1850	925	510	100	725	-
OWS8020.1900	1900	950	490	100	750	-
OWS8020.1950	1950	975	470	100	775	-
OWS8020.2000	2000	1000	450	100	800	-

We recommend use the major axis.
Do not dismantle the slide !
The maximum safe load is given for a fully extended pair of slides, mounted on the major axis with a load spread uniformly along the inner beam. Flat mounted slide load capacities are reduced between 60-80%

Material:All steel parts.

Beams:Cold drawn carbon steel C45E+C, - EN 10277, milled raceways.

Ball cages:Zinc plated sheet steel.

Ball bearings:Chromed C85,G100: DIN 5401.

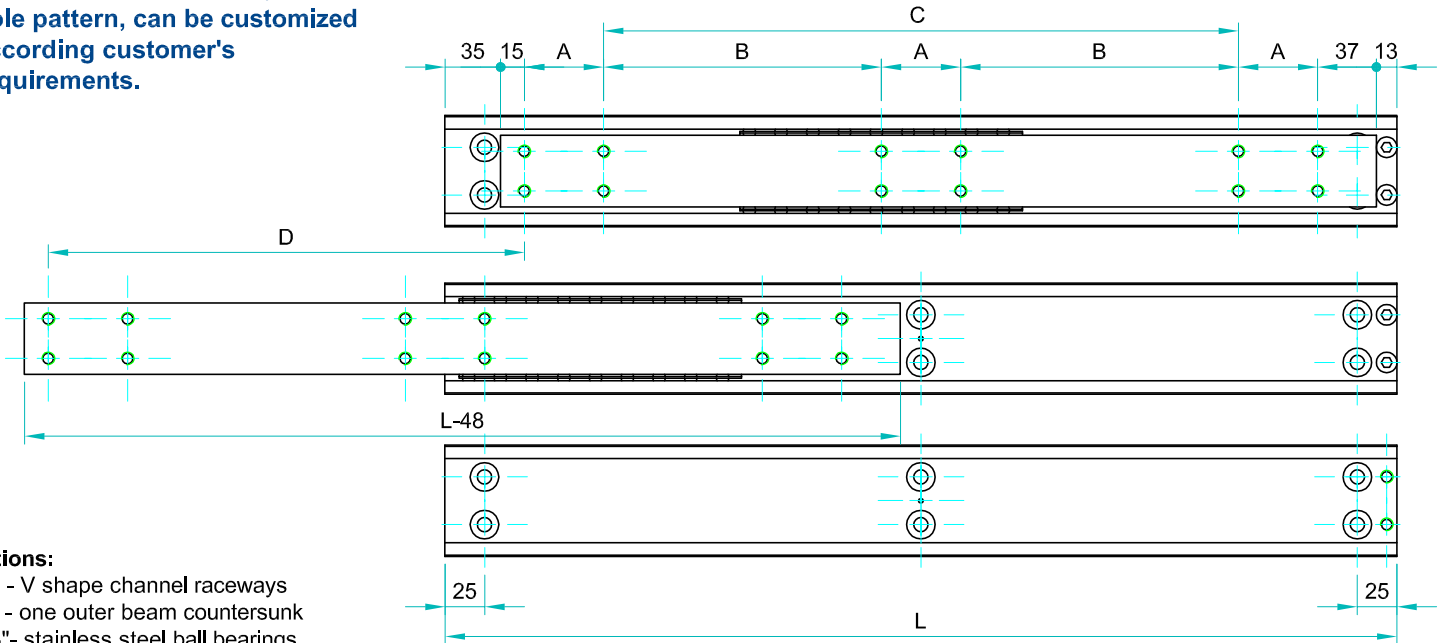
End Bolts: ASTM A307.

Steel surface protection:Electrolytic alkaline Zinc coating 8-12 microns testet in salt chamber 900 hours without white rast.

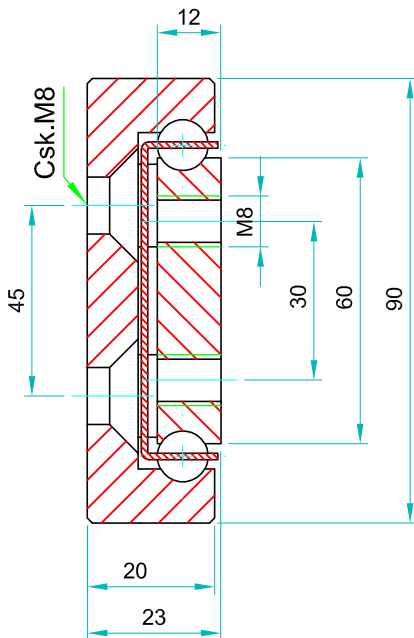
Maximum temperature:We recommend -40 to +200°C with low/high-temp lubrication and free movement to allow for steel expansion.



Note: The slide opening and the hole pattern, can be customized according customer's requirements.



- Options:**
- "V" - V shape channel raceways
 - "F" - one outer beam countersunk
 - "SB"- stainless steel ball bearings
 - "SC"- stainless steel ball cages
 - "SA"- stainless steel stopping pins and bolts



Type: OWS-90				Hole pattern		
Article number	Instalacion lenght :L	Extension lenght :D	Load per pair : kg	"A"	"B"	"C"
OWS9023.0300	300	150	1260	50	-	100
OWS9023.0350	350	175	1300	50	-	150
OWS9023.0400	400	200	1380	50	-	200
OWS9023.0450	450	225	1440	50	-	250
OWS9023.0500	500	250	1480	50	-	300
OWS9023.0550	550	275	1520	50	-	350
OWS9023.0600	600	300	1550	50	-	400
OWS9023.0650	650	325	1580	50	200	-
OWS9023.0700	700	350	1600	50	225	-
OWS9023.0750	750	375	1560	50	250	-
OWS9023.0800	800	400	1500	50	275	-
OWS9023.0850	850	425	1440	50	300	-
OWS9023.0900	900	450	1360	50	325	-
OWS9023.0950	950	475	1320	50	350	-
OWS9023.1000	1000	500	1240	50	375	-
OWS9023.1050	1050	525	1180	50	400	-
OWS9023.1100	1100	550	1100	50	425	-
OWS9023.1150	1150	575	1010	50	450	-
OWS9023.1200	1200	600	950	50	475	-



We recommend use the major axis.
 Do not dismantle the slide !
 The maximum safe load is given for a fully extended pair of slides, mounted on the major axis with a load spread uniformly along the inner beam
 Flat mounted slide load capacities are reduced between 60-80%

Material:All steel parts.

Beams:Cold drawn carbon steel C45E+C, - EN 10277, milled raceways.

Ball cages:Zinc plated sheet steel.

Ball bearings:Chromed C85,G100: DIN 5401.

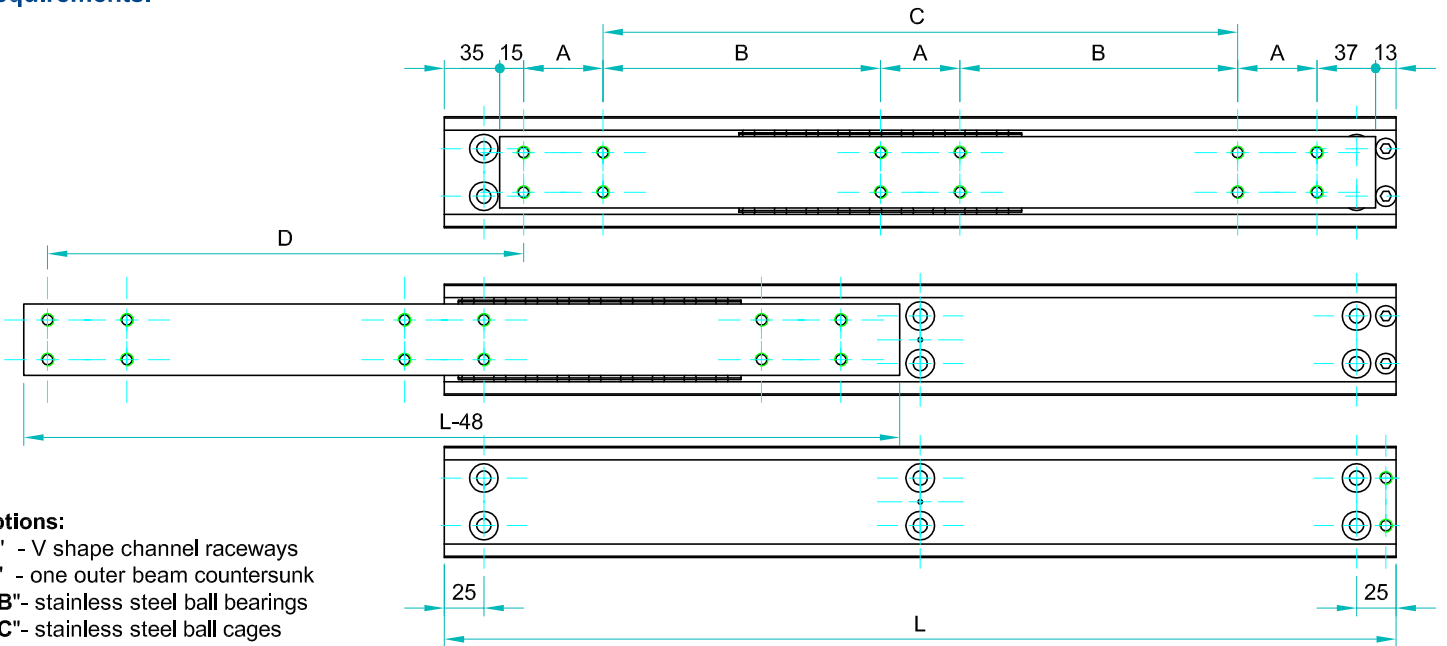
End Bolts: ASTM A307.

Steel surface protection:Electrolytic alkaline Zinc coating 8-12 microns testet in salt chamber 900 hours without white rast.

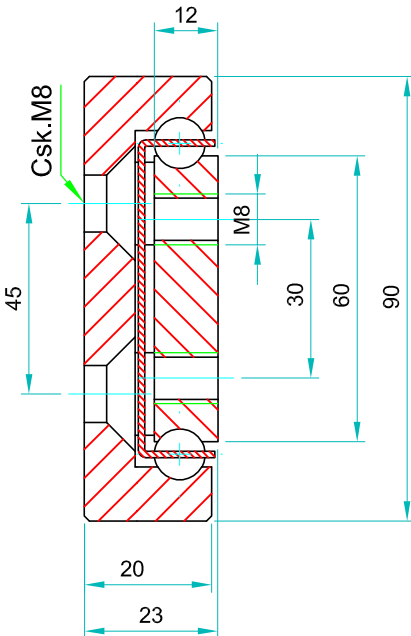
Maximum temperature:We recommend -40 to +200°C with low/high-temp lubrication and free movement to allow for steel expansion.



Note: The slide opening and the hole pattern, can be customized according customer's requirements.



- Options:**
 "V" - V shape channel raceways
 "F" - one outer beam countersunk
 "SB"- stainless steel ball bearings
 "SC"- stainless steel ball cages
 "SA"- stainless steel stopping pins and bolts



Type: OWS-90				Hole pattern		
Article number	Instalacion lenght :L	Extension lenght :D	Load per pair : kg	"A"	"B"	"C"
OWS9023.1250	1250	625	900	50	500	-
OWS9023.1300	1300	650	850	50	525	-
OWS9023.1350	1350	675	810	50	550	-
OWS9023.1400	1400	700	780	50	575	-
OWS9023.1450	1450	725	730	50	600	-
OWS9023.1500	1500	750	690	50	625	-
OWS9023.1550	1550	775	650	50	650	-
OWS9023.1600	1600	800	630	50	675	-
OWS9023.1650	1650	825	610	50	700	-
OWS9023.1700	1700	850	600	100	650	-
OWS9023.1750	1750	875	590	100	675	-
OWS9023.1800	1800	900	580	100	700	-
OWS9023.1850	1850	925	565	100	725	-
OWS9023.1900	1900	950	545	100	750	-
OWS9023.1950	1950	975	525	100	775	-
OWS9023.2000	2000	1000	510	100	800	-

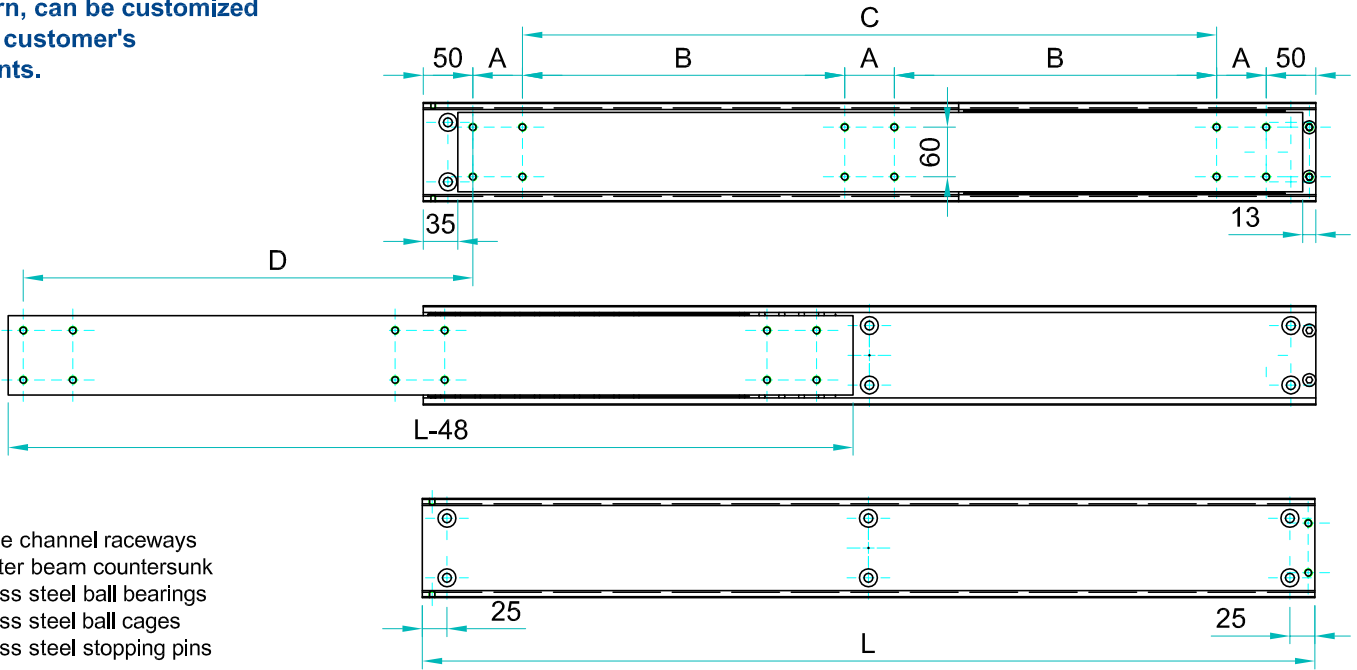


We recommend use the major axis.
 Do not dismantle the slide !
 The maximum safe load is given for a fully extended pair of slides, mounted on the major axis with a load spread uniformly along the inner beam. Flat mounted slide load capacities are reduced between 60-80%

Material:All steel parts.
Beams:Cold drawn carbon steel C45E+C, - EN 10277, milled raceways.
Ball cages:Zinc plated sheet steel.
Ball bearings:Chromed C85,G100: DIN 5401.
End Bolts: ASTM A307.
Steel surface protection:Electrolytic alkaline Zinc coating 8-12 microns tested in salt chamber 900 hours without white rast.
Maximum temperature:We recommend -40 to +200°C with low/high-temp lubrication and free movement to allow for steel expansion.

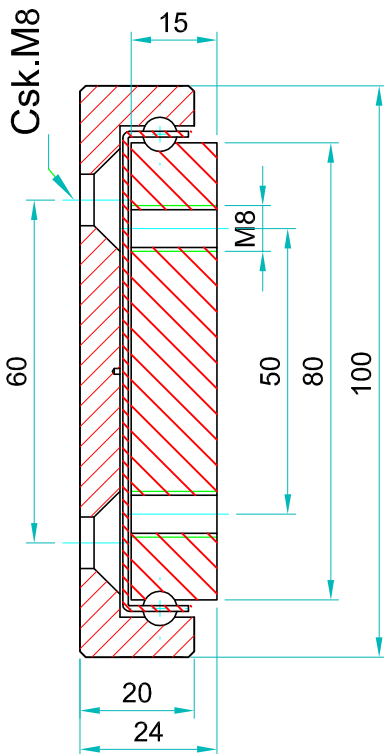


Note: The slide opening and the hole pattern, can be customized according customer's requirements.



Options:

- "V" - V shape channel raceways
- "F" - one outer beam countersunk
- "SB"- stainless steel ball bearings
- "SC"- stainless steel ball cages
- "SA"- stainless steel stopping pins and bolts



Type: OWS-100				Hole pattern		
Article number	Instalacion lenght :L	Extension lenght:D	Load capacity	"A"	"B"	"C"
OWS10024.0300	300	150	1410	50	-	100
OWS10024.0350	350	175	1450	50	-	150
OWS10024.0400	400	200	1510	50	-	200
OWS10024.0450	450	225	1570	50	-	250
OWS10024.0500	500	250	1630	50	-	300
OWS10024.0550	550	275	1670	50	-	350
OWS10024.0600	600	300	1700	50	-	400
OWS10024.0650	650	325	1730	50	200	-
OWS10024.0700	700	350	1750	50	225	-
OWS10024.0750	750	375	1690	50	250	-
OWS10024.0800	800	400	1630	50	275	-
OWS10024.0850	850	425	1550	50	300	-
OWS10024.0900	900	450	1450	50	325	-
OWS10024.0950	950	475	1400	50	350	-
OWS10024.1000	1000	500	1320	50	375	-
OWS10024.1050	1050	525	1260	50	400	-
OWS10024.1100	1100	550	1210	50	425	-
OWS10024.1150	1150	575	1160	50	450	-
OWS10024.1200	1200	600	1100	50	475	-



We recommend use the major axis.
Do not dismantle the slide !
The maximum safe load is given for a fully extended pair of slides, mounted on the major axis with a load spread uniformly along the inner beam. Flat mounted slide load capacities are reduced between 60-80%

Material:All steel parts.

Beams:Cold drawn carbon steel C45E+C, - EN 10277, milled raceways.

Ball cages:Zinc plated sheet steel.

Ball bearings:Chromed C85,G100: DIN 5401.

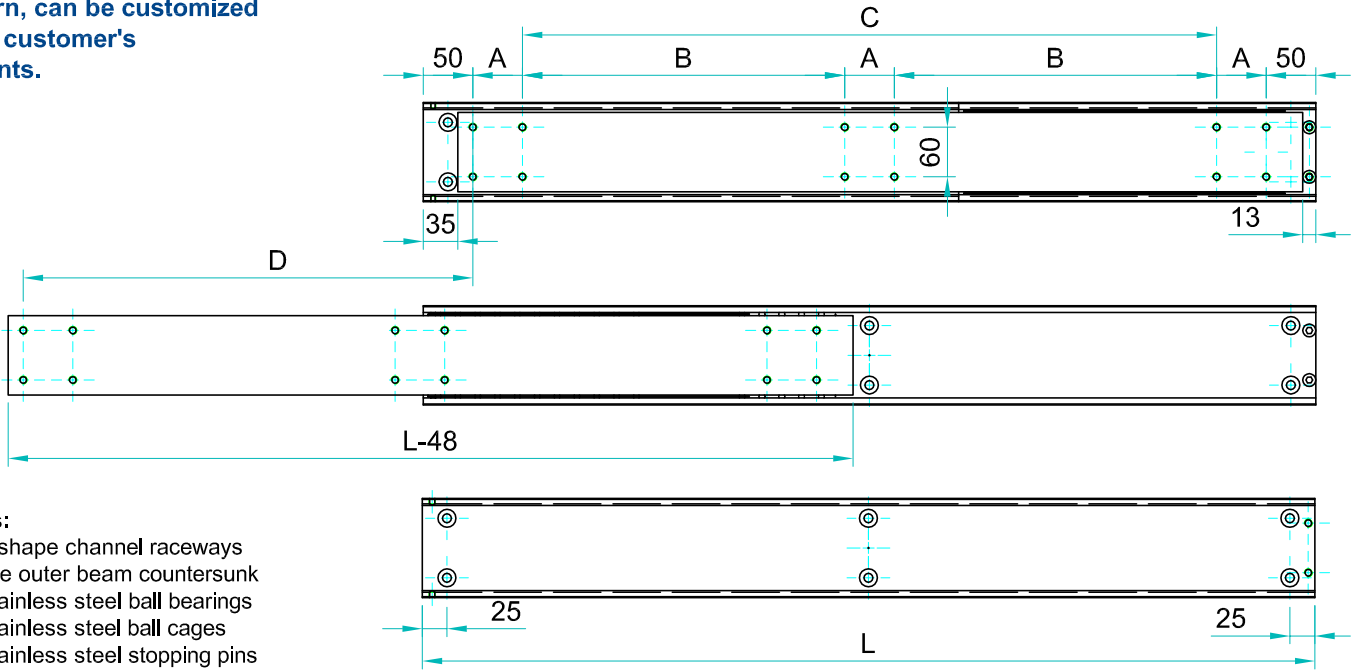
End Bolts: ASTM A307.

Steel surface protection:Electrolytic alkaline Zinc coating 8-12 microns testet in salt chamber 900 hours without white rast.

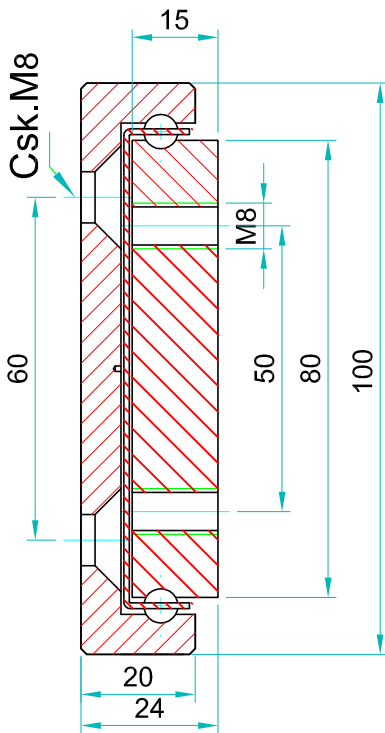
Maximum temperature:We recommend -40 to +200°C with low/high-temp lubrication and free movement to allow for steel expansion.



Note: The slide opening and the hole pattern, can be customized according customer's requirements.



- Options:**
 "V" - V shape channel raceways
 "F" - one outer beam countersunk
 "SB"- stainless steel ball bearings
 "SC"- stainless steel ball cages
 "SA"- stainless steel stopping pins and bolts



Type: OWS-100				Hole pattern		
Article number	Instalacion lenght :L	Extension lenght:D	Load capacity	"A"	"B"	"C"
OWS10024.1250	1250	625	1070	50	500	-
OWS10024.1300	1300	650	1030	50	525	-
OWS10024.1350	1350	675	970	50	550	-
OWS10024.1400	1400	700	940	50	575	-
OWS10024.1450	1450	725	900	50	600	-
OWS10024.1500	1500	750	860	50	625	-
OWS10024.1550	1550	775	830	50	650	-
OWS10024.1600	1600	800	790	50	675	-
OWS10024.1650	1650	825	760	50	700	-
OWS10024.1700	1700	850	740	100	650	-
OWS10024.1750	1750	875	730	100	675	-
OWS10024.1800	1800	900	710	100	700	-
OWS10024.1850	1850	925	700	100	725	-
OWS10024.1900	1900	950	690	100	750	-
OWS10024.1950	1950	975	680	100	775	-
OWS10024.2000	2000	1000	670	100	800	-



We recommend use the major axis.
 Do not dismantle the slide !
 The maximum safe load is given for a fully extended pair of slides, mounted on the major axis with a load spread uniformly along the inner beam. Flat mounted slide load capacities are reduced between 60-80%

Material:All steel parts.
Beams:Cold drawn carbon steel C45E+C, - EN 10277, milled raceways.
Ball cages:Zinc plated sheet steel.
Ball bearings:Chromed C85,G100: DIN 5401.
End Bolts: ASTM A307.
Steel surface protection:Electrolytic alkaline Zinc coating 8-12 microns testet in salt chamber 900 hours without white rast.
Maximum temperature:We recommend -40 to +200°C with low/high-temp lubrication and free movement to allow for steel expansion.

