

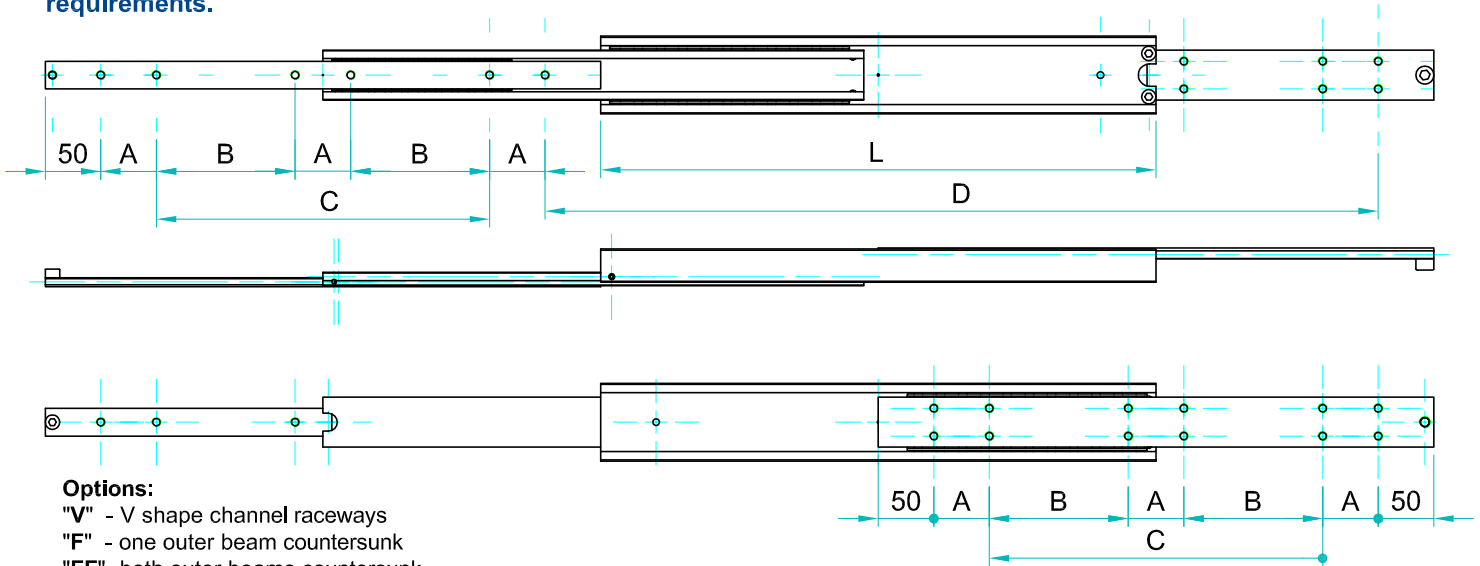
FEDS

TELESCOPIC SLIDES AND LINEAR RAILS

Super extension

Slide type: **DDTS**
QSRT

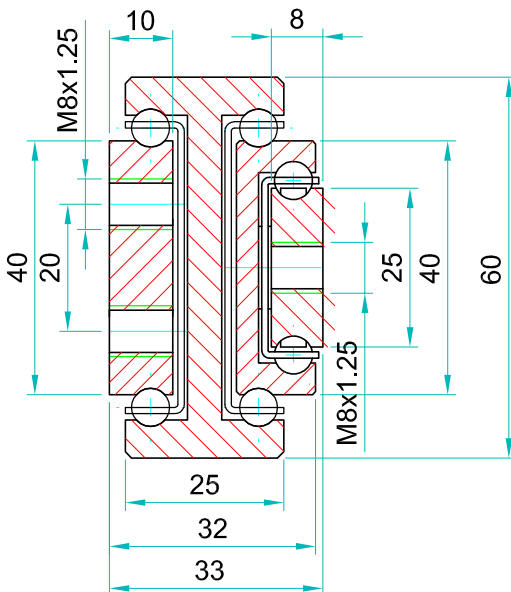
Note: The slide opening and the hole pattern, can be customized according customer's requirements.



Options:

- "V" - V shape channel raceways
- "F" - one outer beam countersunk
- "FF"- both outer beams countersunk
- "SB"- stainless steel ball bearings
- "SC"- stainless steel ball cages
- "SA"- stainless steel stopping pins and bolts

Type:QSRT-60				Hole pattern		
Article number	Instalacion length:L	Extension length:D	Load per pair: kg	"A"	"B"	"C"
QSRT6033.0200	200	300	160	50	-	-
QSRT6033.0250	250	375	170	50	-	50
QSRT6033.0300	300	450	180	50	-	100
QSRT6033.0350	350	525	190	50	-	150
QSRT6033.0400	400	600	200	50	-	200
QSRT6033.0450	450	675	210	50	-	250
QSRT6033.0500	500	750	220	50	-	300
QSRT6033.0550	550	825	225	50	150	-
QSRT6033.0600	600	900	230	50	175	-
QSRT6033.0650	650	975	210	50	200	-
QSRT6033.0700	700	1050	190	50	225	-
QSRT6033.0750	750	1125	170	50	250	-
QSRT6033.0800	800	1200	160	50	275	-
QSRT6033.0850	850	1275	150	50	300	-
QSRT6033.0900	900	1350	140	50	325	-
QSRT6033.0950	950	1425	135	50	350	-
QSRT6033.1000	1000	1500	130	50	375	-
QSRT6033.1050	1050	1575	125	50	400	-
QSRT6033.1100	1100	1650	120	50	425	-
QSRT6033.1150	1150	1725	115	50	450	-
QSRT6033.1200	1200	1800	110	50	475	-
QSRT6033.1250	1250	1875	105	50	500	-
QSRT6033.1300	1300	1950	100	50	525	-
QSRT6033.1350	1350	2025	95	50	550	-
QSRT6033.1400	1400	2100	90	50	575	-
QSRT6033.1450	1450	2175	85	50	600	-
QSRT6033.1500	1500	2250	80	50	625	-
QSRT6033.1550	1550	2325	75	50	650	-
QSRT6033.1600	1600	2400	70	50	675	-



We recommend use the major axis.
Do not dismantle the slide !
The maximum safe load is given for a fully extended pair of slides, mounted on the major axis with a load spread uniformly along the inner beam. Flat mounted slide load capacities are reduced between 60-80%

Material:All steel parts.

Beams:Cold drawn carbon steel C45E+C, - EN 10277, milled raceways.

Ball cages:Zinc plated sheet steel.

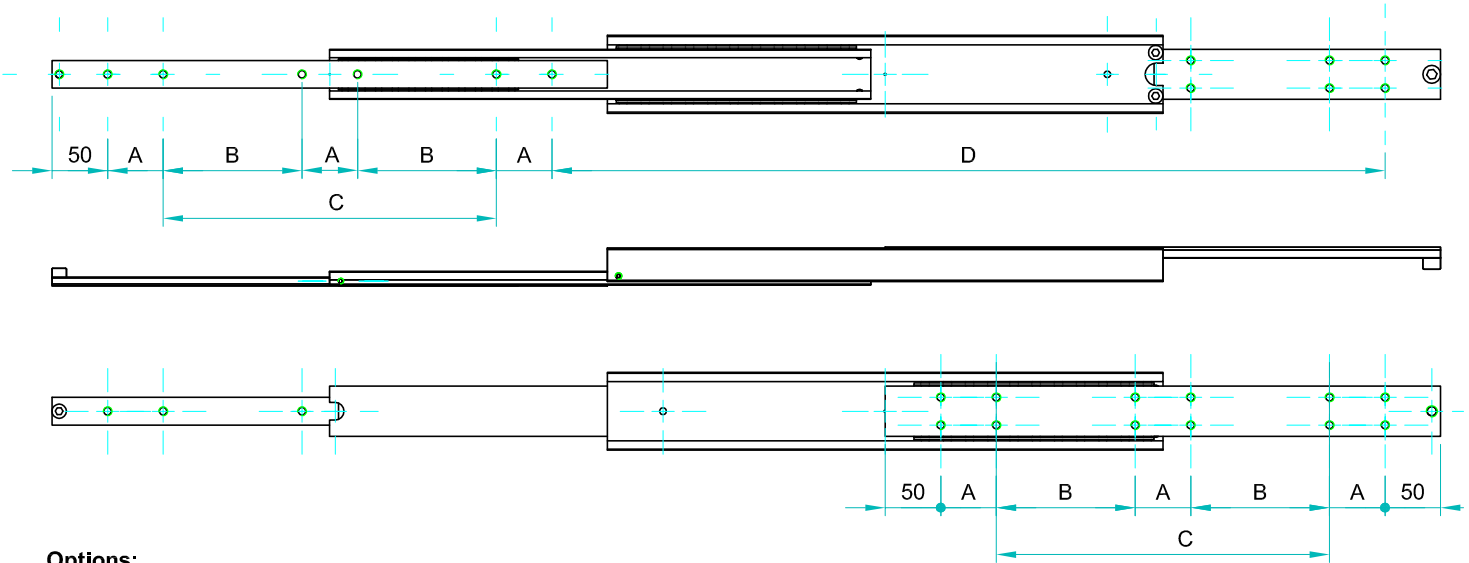
Ball bearings:Chromed C85,G100: DIN 5401.

End Bolts: ASTM A307.

Steel surface protection:Electrolytic alkaline Zinc coating 8-12 microns testet in salt chamber 900 hours without white rast.

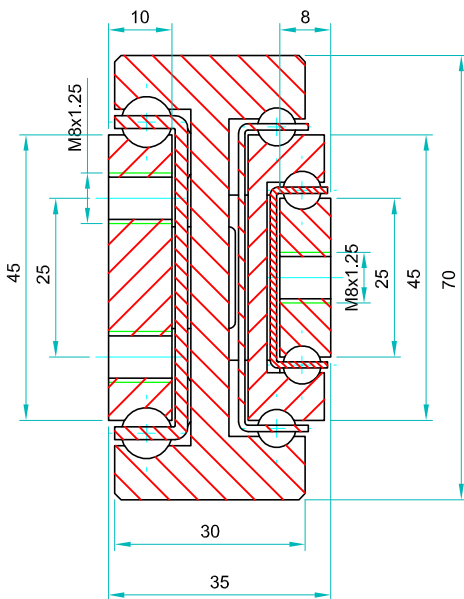
Maximum temperature:We recommend -40 to +200°C with low/high-temp lubrication and free movement to allow for steel expansion.

Note: The slide opening and the hole pattern, can be customized according customer's requirements.



Options:

- "V" - V shape channel raceways
- "F" - one outer beam countersunk
- "FF" - both outer beams countersunk
- "SB" - stainless steel ball bearings
- "SC" - stainless steel ball cages
- "SA" - stainless steel stopping pins and bolts



We recommend use the major axis.
Do not dismantle the slide !
The maximum safe load is given for a fully extended pair of slides, mounted on the major axis with a load spread uniformly along the inner beam. Flat mounted slide load capacities are reduced between 60-80%

Type: QSRT-70				Hole pattern		
Article number	Instalacion lenght: L	Extension lenght: D	Load per pair: kg.	"A"	"B"	"C"
QSRT7035.0300	300	450	260	50		100
QSRT7035.0350	350	525	270	50		150
QSRT7035.0400	400	600	280	50		200
QSRT7035.0450	450	675	285	50		250
QSRT7035.0500	500	750	295	50		300
QSRT7035.0550	550	825	305	50	150	-
QSRT7035.0600	600	900	310	50	175	-
QSRT7035.0650	650	975	300	50	200	-
QSRT7035.0700	700	1050	290	50	225	-
QSRT7035.0750	750	1125	280	50	250	-
QSRT7035.0800	800	1200	270	50	275	-
QSRT7035.0850	850	1275	260	50	300	-
QSRT7035.0900	900	1350	250	50	325	-
QSRT7035.0950	950	1425	240	50	350	-
QSRT7035.1000	1000	1500	230	50	375	-
QSRT7035.1050	1050	1575	210	50	400	-
QSRT7035.1100	1100	1650	200	50	425	-
QSRT7035.1150	1150	1725	190	50	450	-
QSRT7035.1200	1200	1800	180	50	475	-
QSRT7035.1250	1250	1875	170	50	500	-
QSRT7035.1300	1300	1950	160	50	525	-
QSRT7035.1350	1350	2025	150	50	550	-
QSRT7035.1400	1400	2100	140	50	575	-
QSRT7035.1450	1450	2175	130	50	600	-
QSRT7035.1500	1500	2250	120	50	625	-
QSRT7035.1550	1550	2325	110	50	650	-
QSRT7035.1600	1600	2400	100	50	675	-

Material:All steel parts.

Beams:Cold drawn carbon steel C45E+C, - EN 10277, milled raceways.

Ball cages:Zinc plated sheet steel.

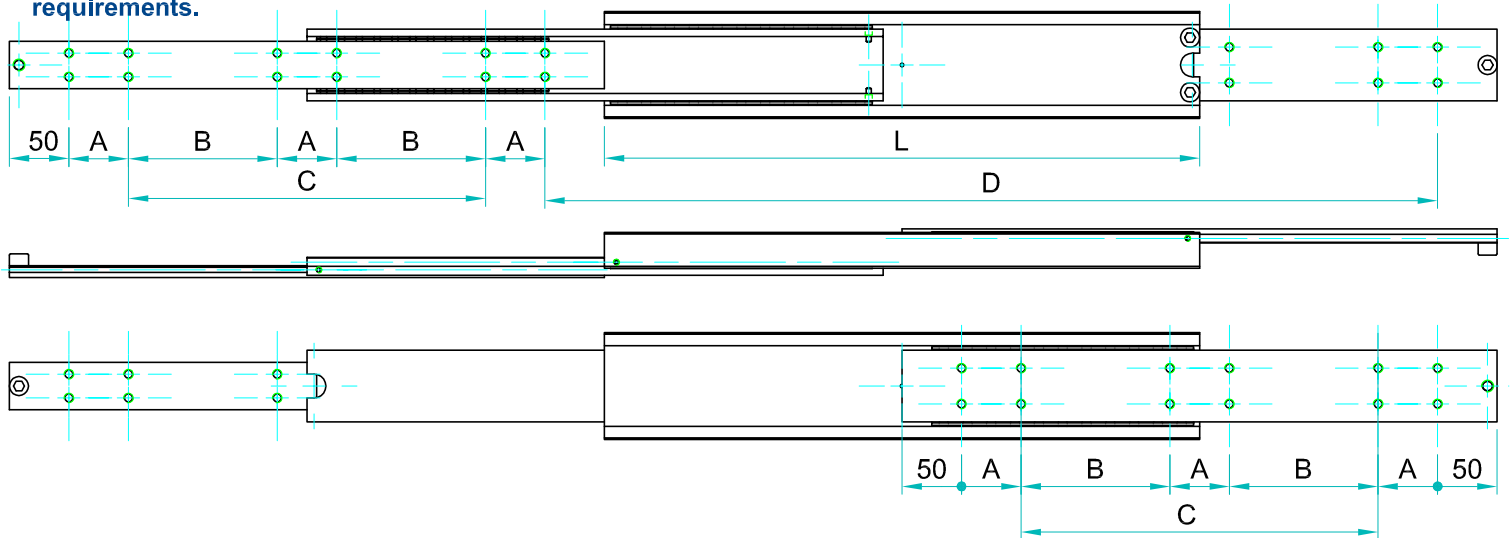
Ball bearings:Chromed C85,G100: DIN 5401.

End Bolts: ASTM A307.

Steel surface protection:Electrolytic alkaline Zinc coating 8-12 microns testet in salt chamber 900 hours without white rast.

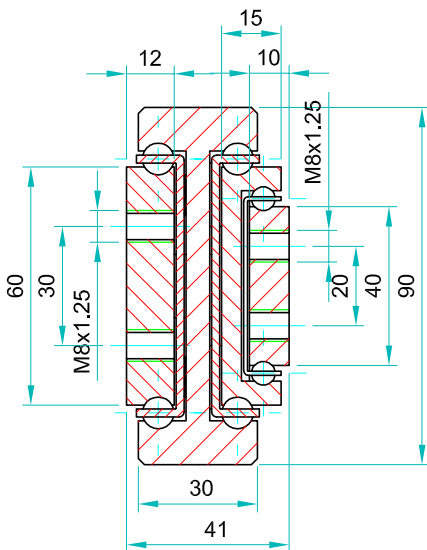
Maximum temperature:We recommend -40 to +200°C with low/high-temp lubrication and free movement to allow for steel expansion.

Note: The slide opening and the hole pattern, can be customized according customer's requirements.



Options:

- "V" - V shape channel raceways
- "F" - one outer beam countersunk
- "FF" - both outer beams countersunk
- "SB" - stainless steel ball bearings
- "SC" - stainless steel ball cages
- "SA" - stainless steel stopping pins and bolts



We recommend use the major axis.
Do not dismantle the slide !
The maximum safe load is given for a fully extended pair of slides, mounted on the major axis with a load spread uniformly along the inner beam. Flat mounted slide load capacities are reduced between 60-80%

Type: QSRT-90				Hole pattern		
Article number	Instalacion lenght: L	Extension lenght: D	Load per pair: kg.	"A"	"B"	"C"
QSRT9041.0300	300	450	360	50		100
QSRT9041.0350	350	525	380	50		150
QSRT9041.0400	400	600	400	50		200
QSRT9041.0450	450	675	420	50		250
QSRT9041.0500	500	750	430	50		300
QSRT9041.0550	550	825	440	50	150	-
QSRT9041.0600	600	900	455	50	175	-
QSRT9041.0650	650	975	470	50	200	-
QSRT9041.0700	700	1050	460	50	225	-
QSRT9041.0750	750	1125	450	50	250	-
QSRT9041.0800	800	1200	440	50	275	-
QSRT9041.0850	850	1275	430	50	300	-
QSRT9041.0900	900	1350	420	50	325	-
QSRT9041.0950	950	1425	400	50	350	-
QSRT9041.1000	1000	1500	380	50	375	-
QSRT9041.1050	1050	1575	360	50	400	-
QSRT9041.1100	1100	1650	340	50	425	-
QSRT9041.1150	1150	1725	330	50	450	-
QSRT9041.1200	1200	1800	315	50	475	-
QSRT9041.1250	1250	1875	300	50	500	-
QSRT9041.1300	1300	1950	290	50	525	-

Material:All steel parts.

Beams:Cold drawn carbon steel C45E+C, - EN 10277, milled raceways.

Ball cages:Zinc plated sheet steel.

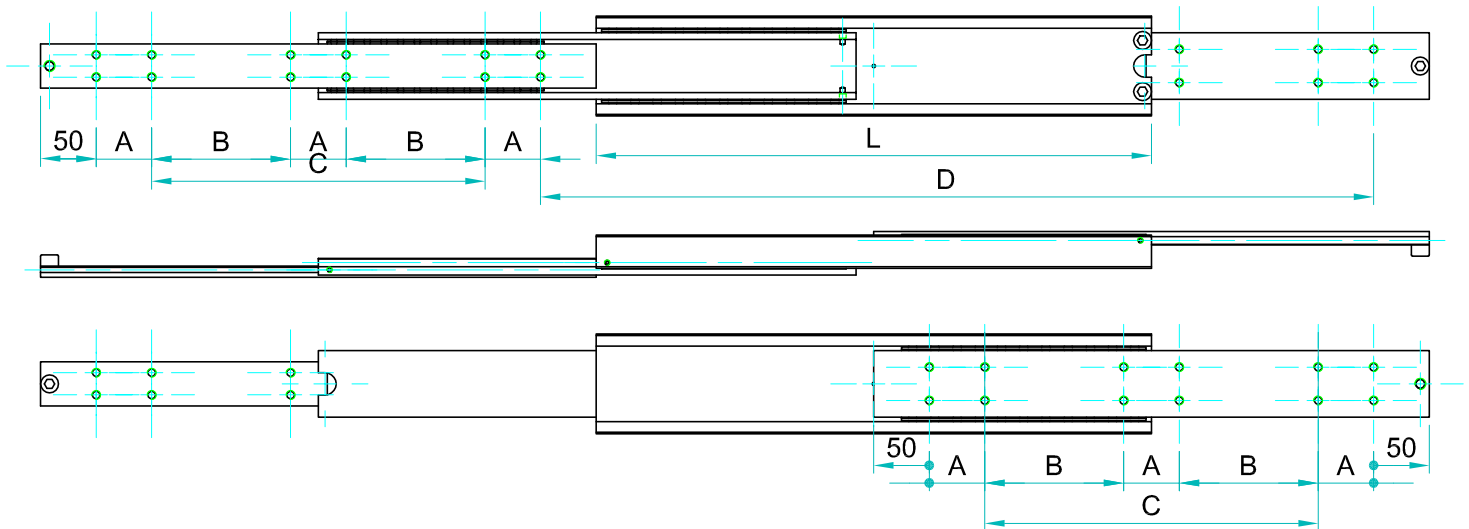
Ball bearings:Chromed C85,G100: DIN 5401.

End Bolts: ASTM A307.

Steel surface protection:Electrolytic alkaline Zinc coating 8-12 microns testet in salt chamber 900 hours without white rast.

Maximum temperature:We recommend -40 to +200°C with low/high-temp lubrication and free movement to allow for steel expansion.

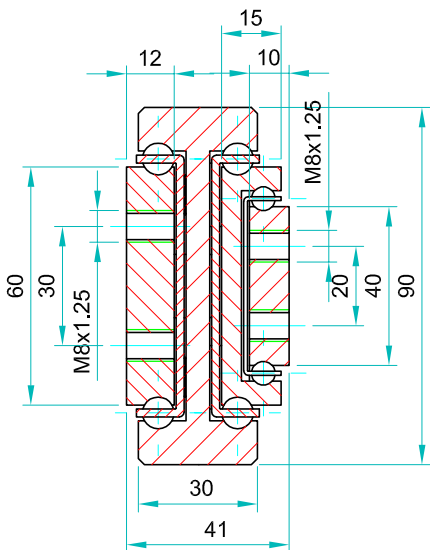
Note: The slide opening and the hole pattern, can be customized according customer's requirements.



Options:

- "V" - V shape channel raceways
- "F" - one outer beam countersunk
- "FF" - both outer beams countersunk
- "SB" - stainless steel ball bearings
- "SC" - stainless steel ball cages
- "SA" - stainless steel stopping pins and bolts

Type: QSRT-90					Hole pattern	
Article number	Instalacion lenght: L	Extension lenght: D	Load per pair: kg.	"A"	"B"	"C"
QSRT9041.1350	1350	2025	280	50	550	
QSRT9041.1400	1400	2100	270	50	575	
QSRT9041.1450	1450	2175	250	50	600	
QSRT9041.1500	1500	2250	230	50	625	
QSRT9041.1550	1550	2325	220	50	650	
QSRT9041.1600	1600	2400	210	50	675	
QSRT9041.1650	1650	2475	205	50	700	
QSRT9041.1700	1700	2550	200	100	650	
QSRT9041.1750	1750	2625	190	100	675	
QSRT9041.1800	1800	2700	180	100	700	
QSRT9041.1850	1850	2775	170	100	725	
QSRT9041.1900	1900	2850	160	100	750	
QSRT9041.1950	1950	2925	150	100	775	
QSRT9041.2000	2000	3000	140	100	800	



We recommend use the major axis.
Do not dismantle the slide !
The maximum safe load is given for a fully extended pair of slides, mounted on the major axis with a load spread uniformly along the inner beam. Flat mounted slide load capacities are reduced between 60-80%

Material:All steel parts.

Beams:Cold drawn carbon steel C45E+C, - EN 10277, milled raceways.

Ball cages:Zinc plated sheet steel.

Ball bearings:Chromed C85,G100: DIN 5401.

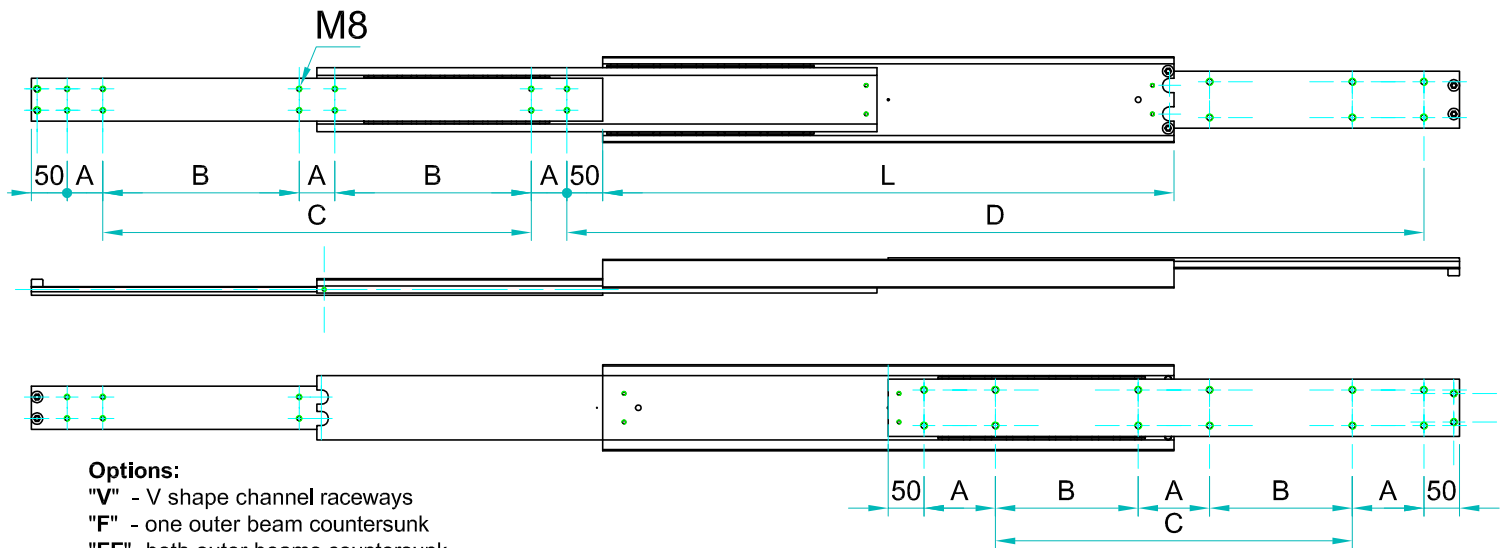
End Bolts: ASTM A307.

Steel surface protection:Electrolytic alkaline Zinc coating 8-12 microns testet in salt chamber 900 hours without white rast.

Maximum temperature:We recommend -40 to +200°C with low/high-temp lubrication and free movement to allow for steel expansion.

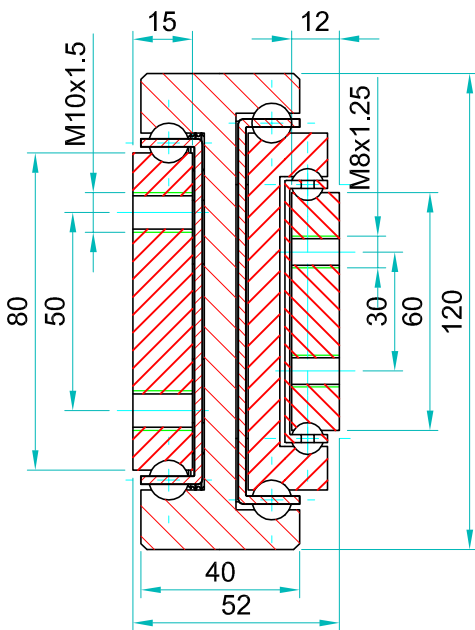


Note: The slide opening and the hole pattern, can be customized according customer's requirements.



Options:

- "V" - V shape channel raceways
- "F" - one outer beam countersunk
- "FF"- both outer beams countersunk
- "SB"- stainless steel ball bearings
- "SC"- stainless steel ball cages
- "SA"- stainless steel stopping pins and bolts



Type:QSRT-120			Hole pattern			
Article number	Instalacion lenght: L	Extension lenght: D	Load per pair: kg.	"A"	"B"	"C"
QSRT12052.0300	300	450	540	50		100
QSRT12052.0350	350	525	560	50		150
QSRT12052.0400	400	600	580	50		200
QSRT12052.0450	450	675	600	50		250
QSRT12052.0500	500	750	620	50		300
QSRT12052.0550	550	825	640	50	150	-
QSRT12052.0600	600	900	650	50	175	-
QSRT12052.0650	650	975	660	50	200	-
QSRT12052.0700	700	1050	670	50	225	-
QSRT12052.0750	750	1125	680	50	250	-
QSRT12052.0800	800	1200	670	50	275	-
QSRT12052.0850	850	1275	660	50	300	-
QSRT12052.0900	900	1350	650	50	325	-
QSRT12052.0950	950	1425	640	50	350	-
QSRT12052.1000	1000	1500	630	50	375	-
QSRT12052.1050	1050	1575	620	50	400	-
QSRT12052.1100	1100	1650	600	50	425	-
QSRT12052.1150	1150	1725	580	50	450	-
QSRT12052.1200	1200	1800	560	50	475	-
QSRT12052.1250	1250	1875	530	50	500	-
QSRT12052.1300	1300	1950	500	50	525	-



We recommend use the major axis.
Do not dismantle the slide !
The maximum safe load is given for a fully extended pair of slides, mounted on the major axis with a load spread uniformly along the inner beam. Flat mounted slide load capacities are reduced between 60-80%

Material:All steel parts.

Beams:Cold drawn carbon steel C45E+C, - EN 10277, milled raceways.

Ball cages:Zinc plated sheet steel.

Ball bearings:Chromed C85,G100: DIN 5401.

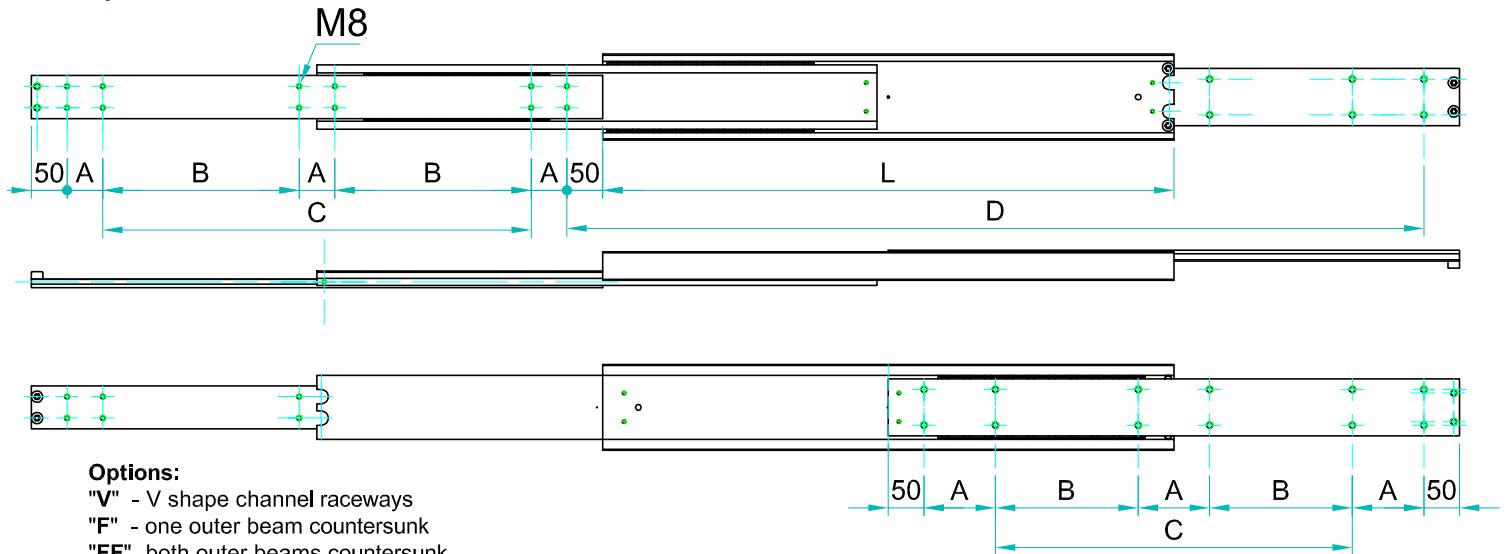
End Bolts: ASTM A307.

Steel surface protection:Electrolytic alkaline Zinc coating 8-12 microns testet in salt chamber 900 hours without white rast.

Maximum temperature:We recommend -40 to +200°C with low/high-temp lubrication and free movement to allow for steel expansion.

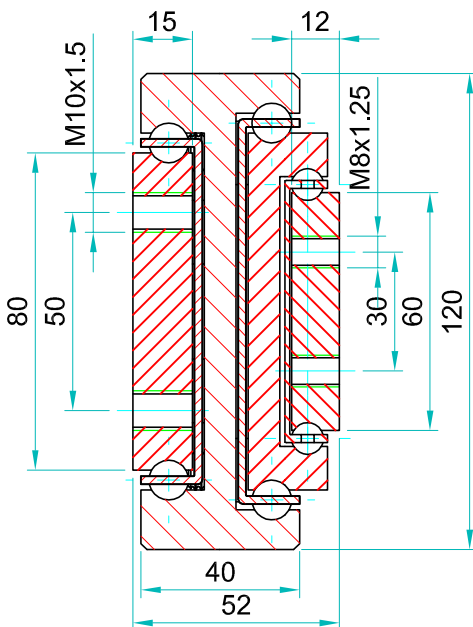


Note: The slide opening and the hole pattern, can be customized according customer's requirements.



Options:

- "V" - V shape channel raceways
- "F" - one outer beam countersunk
- "FF"- both outer beams countersunk
- "SB"- stainless steel ball bearings
- "SC"- stainless steel ball cages
- "SA"- stainless steel stopping pins and bolts



We recommend use the major axis.
Do not dismantle the slide !
The maximum safe load is given for a fully extended pair of slides, mounted on the major axis with a load spread uniformly along the inner beam. Flat mounted slide load capacities are reduced between 60-80%

Type:QSRT-120			Hole pattern			
Article number	Instalacion lenght: L	Extension lenght: D	Load per pair: kg.	"A"	"B"	"C"
QSRT12052.1350	1350	2025	470	50	550	
QSRT12052.1400	1400	2100	430	50	575	
QSRT12052.1450	1450	2175	400	50	600	
QSRT12052.1500	1500	2250	350	50	625	
QSRT12052.1550	1550	2325	310	50	650	
QSRT12052.1600	1600	2400	295	50	675	
QSRT12052.1650	1650	2475	280	50	700	
QSRT12052.1700	1700	2550	270	100	650	
QSRT12052.1750	1750	2625	260	100	675	
QSRT12052.1800	1800	2700	255	100	700	
QSRT12052.1850	1850	2775	240	100	725	
QSRT12052.1900	1900	2850	230	100	750	
QSRT12052.1950	1950	2925	215	100	775	
QSRT12052.2000	2000	3000	240	100	800	

Material:All steel parts.

Beams:Cold drawn carbon steel C45E+C, - EN 10277, milled raceways.

Ball cages:Zinc plated sheet steel.

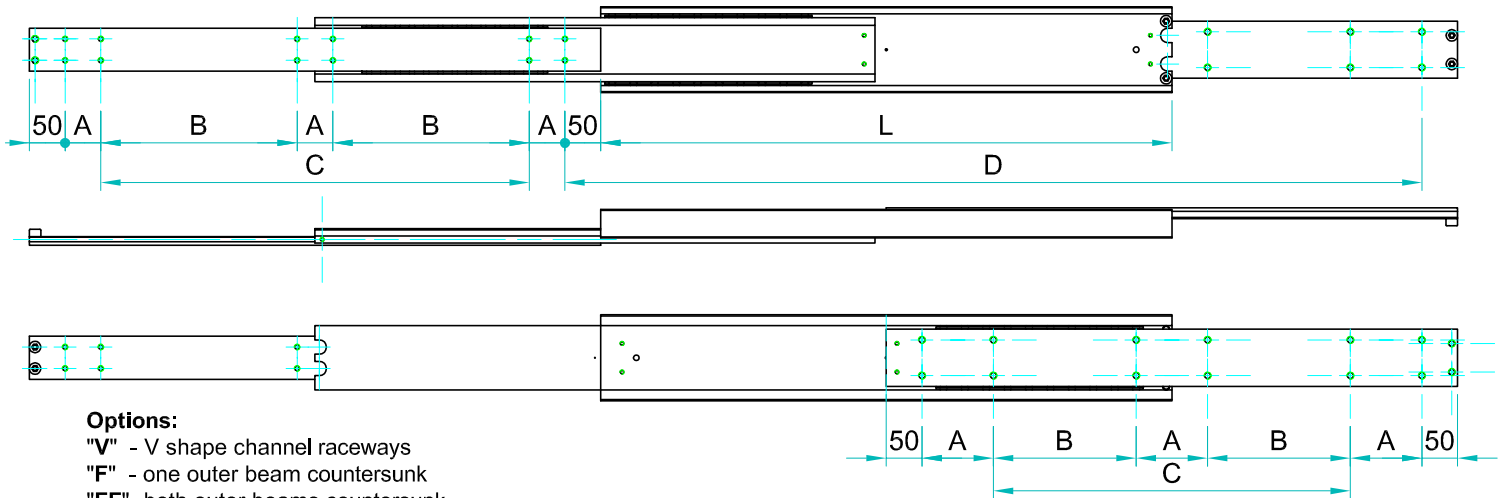
Ball bearings:Chromed C85,G100: DIN 5401.

End Bolts: ASTM A307.

Steel surface protection:Electrolytic alkaline Zinc coating 8-12 microns testet in salt chamber 900 hours without white rast.

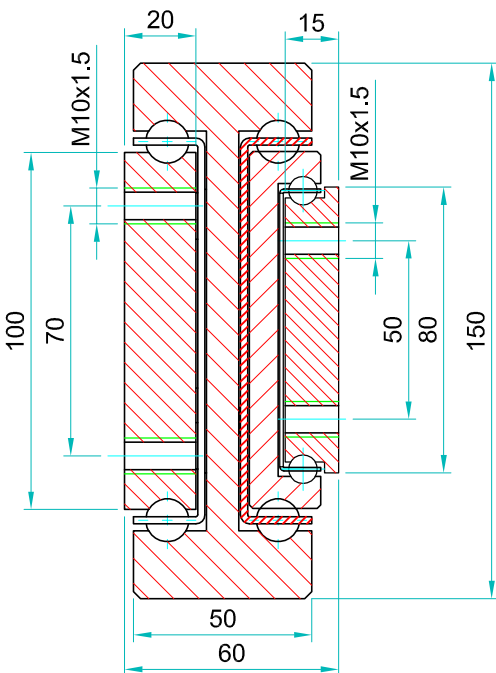
Maximum temperature:We recommend -40 to +200°C with low/high-temp lubrication and free movement to allow for steel expansion.

Note: The slide opening and the hole pattern, can be customized according customer's requirements.



Options:

- "V" - V shape channel raceways
- "F" - one outer beam countersunk
- "FF"- both outer beams countersunk
- "SB"- stainless steel ball bearings
- "SC"- stainless steel ball cages
- "SA"- stainless steel stopping pins and bolts



Type:QSRT-150				Hole pattern		
Article number	Instalacion lenght: L	Extension lenght: D	Load per pair: kg.	"A"	"B"	"C"
QSRT15060.0300	300	450	690	50		100
QSRT15060.0350	350	525	710	50		150
QSRT15060.0400	400	600	730	50		200
QSRT15060.0450	450	675	750	50		250
QSRT15060.0500	500	750	770	50		300
QSRT15060.0550	550	825	790	50	150	-
QSRT15060.0600	600	900	800	50	175	-
QSRT15060.0650	650	975	810	50	200	-
QSRT15060.0700	700	1050	815	50	225	-
QSRT15060.0750	750	1125	805	50	250	-
QSRT15060.0800	800	1200	800	50	275	-
QSRT12052.0850	850	1275	790	50	300	-
QSRT12052.0900	900	1350	780	50	325	-
QSRT12052.0950	950	1425	770	50	350	-
QSRT12052.1000	1000	1500	750	50	375	-
QSRT12052.1050	1050	1575	730	50	400	-
QSRT12052.1100	1100	1650	710	50	425	-
QSRT12052.1150	1150	1725	690	50	450	-
QSRT12052.1200	1200	1800	670	50	475	-
QSRT12052.1250	1250	1875	650	50	500	-
QSRT12052.1300	1300	1950	630	50	525	-



We recommend use the major axis.
Do not dismantle the slide !
The maximum safe load is given for a fully extended pair of slides, mounted on the major axis with a load spread uniformly along the inner beam. Flat mounted slide load capacities are reduced between 60-80%

Material:All steel parts.

Beams:Cold drawn carbon steel C45E+C, - EN 10277, milled raceways.

Ball cages:Zinc plated sheet steel.

Ball bearings:Chromed C85,G100: DIN 5401.

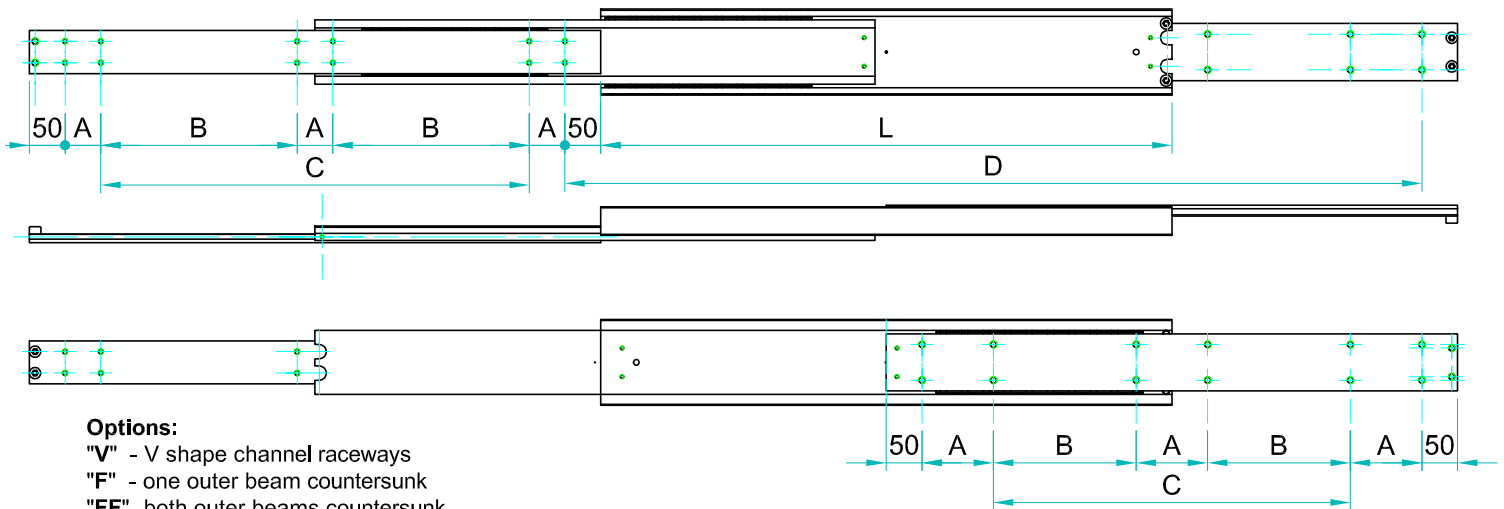
End Bolts: ASTM A307.

Steel surface protection:Electrolytic alkaline Zinc coating 8-12 microns testet in salt chamber 900 hours without white rast.

Maximum temperature:We recommend -40 to +200°C with low/high-temp lubrication and free movement to allow for steel expansion.

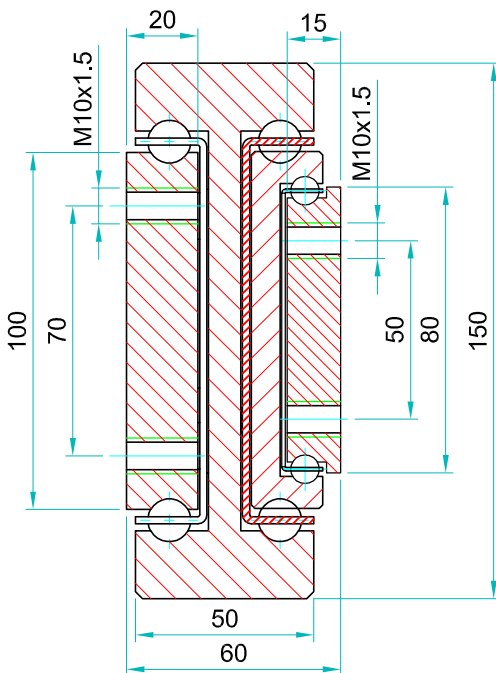


Note: The slide opening and the hole pattern, can be customized according customer's requirements.



Options:

- "V" - V shape channel raceways
- "F" - one outer beam countersunk
- "FF"- both outer beams countersunk
- "SB"- stainless steel ball bearings
- "SC"- stainless steel ball cages
- "SA"- stainless steel stopping pins and bolts



We recommend use the major axis.
Do not dismantle the slide !
The maximum safe load is given for a fully extended pair of slides, mounted on the major axis with a load spread uniformly along the inner beam. Flat mounted slide load capacities are reduced between 60-80%

Type:QSRT-150				Hole pattern		
Article number	Instalacion lenght: L	Extension lenght: D	Load per pair: kg.	"A"	"B"	"C"
QSRT12052.1350	1350	2025	610	50	550	
QSRT12052.1400	1400	2100	590	50	575	
QSRT12052.1450	1450	2175	580	50	600	
QSRT12052.1500	1500	2250	560	50	625	
QSRT12052.1550	1550	2325	540	50	650	
QSRT12052.1600	1600	2400	520	50	675	
QSRT12052.1650	1650	2475	500	50	700	
QSRT12052.1700	1700	2550	480	100	650	
QSRT12052.1750	1750	2625	460	100	675	
QSRT12052.1800	1800	2700	440	100	700	
QSRT12052.1850	1850	2775	420	100	725	
QSRT12052.1900	1900	2850	410	100	750	
QSRT12052.1950	1950	2925	400	100	775	
QSRT12052.2000	2000	3000	390	100	800	

Material:All steel parts.

Beams:Cold drawn carbon steel C45E+C, - EN 10277, milled raceways.

Ball cages:Zinc plated sheet steel.

Ball bearings:Chromed C85,G100: DIN 5401.

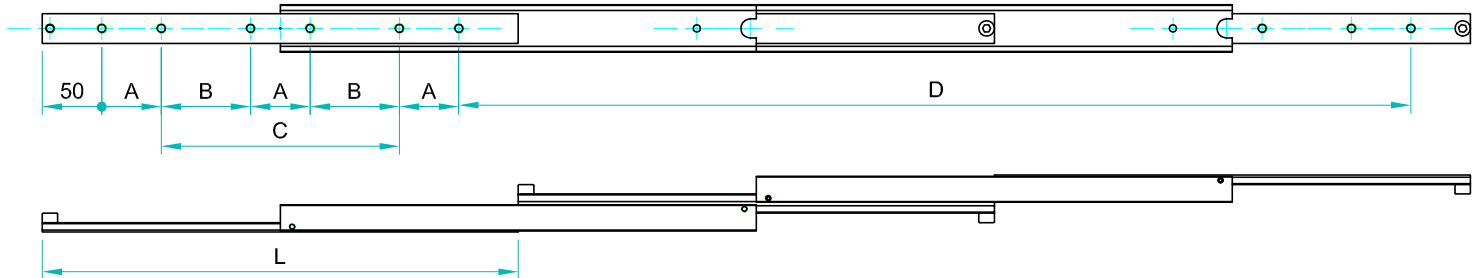
End Bolts: ASTM A307.

Steel surface protection:Electrolytic alkaline Zinc coating 8-12 microns testet in salt chamber 900 hours without white rast.

Maximum temperature:We recommend -40 to +200°C with low/high-temp lubrication and free movement to allow for steel expansion.

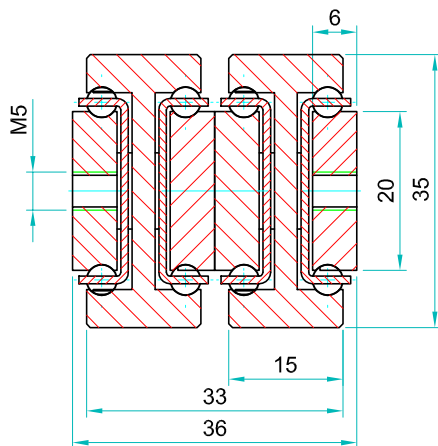


Note: The slide opening and the hole pattern, can be customized according customer's requirements.



Options:

- "V" - V shape channel raceways
- "F" - one outer beam countersunk
- "FF"- both outer beams countersunk
- "SB"- stainless steel ball bearings
- "SC"- stainless steel ball cages
- "SA"- stainless steel stopping pins and bolts



We recommend use the major axis.
Do not dismantle the slide !
The maximum safe load is given for a fully extended pair of slides, mounted on the major axis with a load spread uniformly along the inner beam. Flat mounted slide load capacities are reduced between 60-80%

Type: DDTS-35				Hole pattern		
Article number	Instalacion lenght: L	Extension lenght: D	Load per pair: kg	"A"	"B"	"C"
DDTS3536.0150	150	300	60	50	-	-
DDTS3536.0200	200	400	70	50	-	-
DDTS3536.0250	250	500	80	50	-	50
DDTS3536.0300	300	600	90	50	-	100
DDTS3536.0350	350	700	100	50	-	150
DDTS3536.0400	400	800	90	50	-	200
DDTS3536.0450	450	900	80	50	-	250
DDTS3536.0500	500	1000	70	50		300
DDTS3536.0550	550	1100	65	50	150	-
DDTS3536.0600	600	1200	60	50	175	-
DDTS3536.0650	650	1300	55	50	200	-
DDTS3536.0700	700	1400	50	50	225	-
DDTS3536.0750	750	1500	45	50	250	-
DDTS3536.0800	800	1600	40	50	275	-
DDTS3536.0850	850	1700	35	50	300	-
DDTS3536.0900	900	1800	30	50	325	-
DDTS3536.0950	950	1900	25	50	350	-
DDTS3536.1000	1000	2000	20	50	375	-

Material:All steel parts.

Beams:Cold drawn carbon steel C45E+C, - EN 10277, milled raceways.

Ball cages:Zinc plated sheet steel.

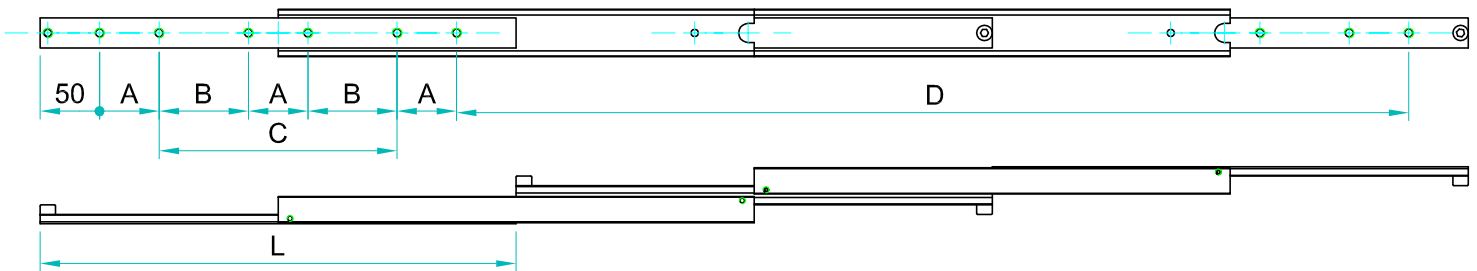
Ball bearings:Chromed C85,G100: DIN 5401.

End Bolts: ASTM A307.

Steel surface protection:Electrolytic alkaline Zinc coating 8-12 microns testet in salt chamber 900 hours without white rast.

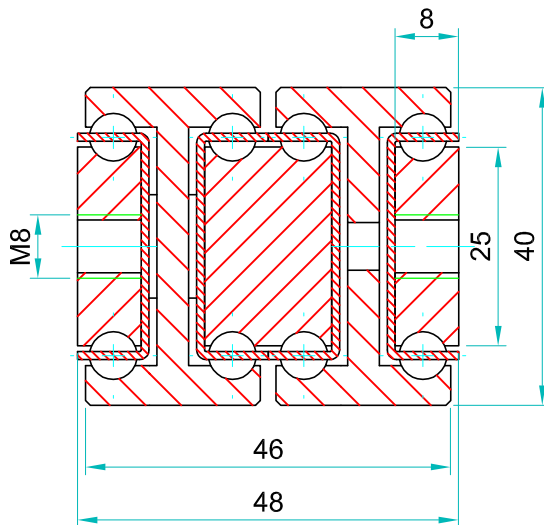
Maximum temperature:We recommend -40 to +200°C with low/high-temp lubrication and free movement to allow for steel expansion.

Note: The slide opening and the hole pattern, can be customized according customer's requirements.



Options:

- "V" - V shape channel raceways
- "F" - one outer beam countersunk
- "FF" - both outer beams countersunk
- "SB" - stainless steel ball bearings
- "SC" - stainless steel ball cages
- "SA" - stainless steel stopping pins and bolts



Type: DDTS-40				Hole pattern		
Article number	Instalacion length L	Extension length D	Load per pair : kg	"A"	"B"	"C"
DDTS4048.0200	200	400	130	50	-	-
DDTS4048.0250	250	500	138	50	-	50
DDTS4048.0300	300	600	145	50	-	100
DDTS4048.0350	350	700	152	50	-	150
DDTS4048.0400	400	800	160	50	-	200
DDTS4048.0450	450	900	155	50	-	250
DDTS4048.0500	500	1000	150	50	-	300
DDTS4048.0550	550	1100	145	50	150	-
DDTS4048.0600	600	1200	140	50	175	-
DDTS4048.0650	650	1300	135	50	200	-
DDTS4048.0700	700	1400	130	50	225	-
DDTS4048.0750	750	1500	125	50	250	-
DDTS4048.0800	800	1600	120	50	275	-
DDTS4048.0850	850	1700	115	50	300	-
DDTS4048.0900	900	1800	110	50	325	-
DDTS4048.0950	950	1900	105	50	350	-
DDTS4048.1000	1000	2000	100	50	375	-
DDTS4048.1050	1050	2100	95	50	400	-
DDTS4048.1100	1100	2200	90	50	425	-
DDTS4048.1150	1150	2300	85	50	450	-
DDTS4048.1200	1200	2400	80	50	475	-



We recommend use the major axis.
Do not dismantle the slide !
The maximum safe load is given for a fully extended pair of slides, mounted on the major axis with a load spread uniformly along the inner beam. Flat mounted slide load capacities are reduced between 60-80%

Material:All steel parts.

Beams:Cold drawn carbon steel C45E+C, - EN 10277, milled raceways.

Ball cages:Zinc plated sheet steel.

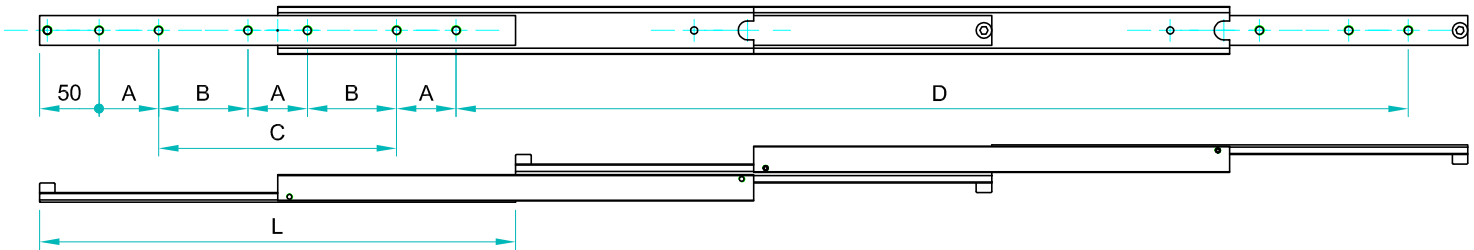
Ball bearings:Chromed C85,G100: DIN 5401.

End Bolts: ASTM A307.

Steel surface protection:Electrolytic alkaline Zinc coating 8-12 microns testet in salt chamber 900 hours without white rast.

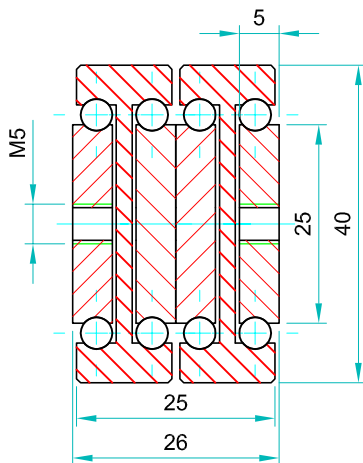
Maximum temperature:We recommend -40 to +200°C with low/high-temp lubrication and free movement to allow for steel expansion.

Note: The slide opening and the hole pattern, can be customized according customer's requirements.



Options:

- "V" - V shape channel raceways
- "F" - one outer beam countersunk
- "FF"- both outer beams countersunk
- "SB"- stainless steel ball bearings
- "SC"- stainless steel ball cages
- "SA"- stainless steel stopping pins and bolts



Type: DDTS-45				Hole pattern		
Article number	Instalacion lenght: L	Extension lenght: D	Load per pair: kg	"A"	"B"	"C"
DDTS4526.0150	150	300	60	50	-	-
DDTS4526.0200	200	400	65	50	-	-
DDTS4526.0250	250	500	70	50	-	50
DDTS4526.0300	300	600	75	50	-	100
DDTS4526.0350	350	700	80	50	-	150
DDTS4526.0400	400	800	75	50	-	200
DDTS4526.0450	450	900	70	50	-	250
DDTS4526.0500	500	1000	65	50	-	300
DDTS4526.0550	550	1100	60	50	150	-
DDTS4526.0600	600	1200	55	50	175	-
DDTS4526.0650	650	1300	50	50	200	-
DDTS4526.0700	700	1400	45	50	225	-
DDTS4526.0750	750	1500	40	50	250	-
DDTS4526.0800	800	1600	35	50	275	-
DDTS4526.0850	850	1700	30	50	300	-
DDTS4526.0900	900	1800	25	50	325	-
DDTS4526.0950	950	1900	20	50	350	-
DDTS4526.1000	1000	2000	15	50	375	-



We recommend use the major axis.
Do not dismantle the slide !
The maximum safe load is given for a fully extended pair of slides, mounted on the major axis with a load spread uniformly along the inner beam. Flat mounted slide load capacities are reduced between 60-80%

Material:All steel parts.

Beams:Cold drawn carbon steel C45E+C, - EN 10277, milled raceways.

Ball cages:Zinc plated sheet steel.

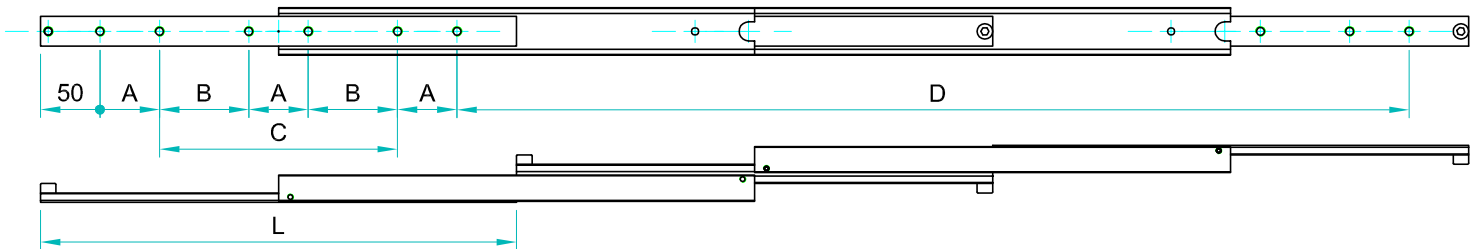
Ball bearings:Chromed C85,G100: DIN 5401.

End Bolts: ASTM A307.

Steel surface protection:Electrolytic alkaline Zinc coating 8-12 microns testet in salt chamber 900 hours without white rast.

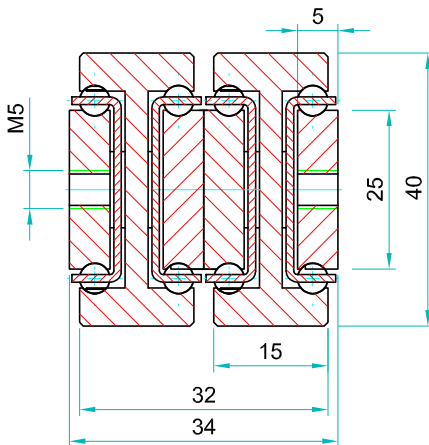
Maximum temperature:We recommend -40 to +200°C with low/high-temp lubrication and free movement to allow for steel expansion.

Note: The slide opening and the hole pattern, can be customized according customer's requirements.



Options:

- "V" - V shape channel raceways
- "F" - one outer beam countersunk
- "FF"- both outer beams countersunk
- "SB"- stainless steel ball bearings
- "SC"- stainless steel ball cages
- "SA"- stainless steel stopping pins and bolts



Type: DDTS-48				Hole pattern		
Article number	Instalacion lenght: L	Extension lenght: D	Load per pair: kg	"A"	"B"	"C"
DDTS4834.0150	150	300	70	50	-	-
DDTS4834.0200	200	400	75	50	-	-
DDTS4834.0250	250	500	80	50	-	50
DDTS4834.0300	300	600	85	50	-	100
DDTS4834.0350	350	700	90	50	-	150
DDTS4834.0400	400	800	85	50	-	200
DDTS4834.0450	450	900	80	50	-	250
DDTS4834.0500	500	1000	75	50	-	300
DDTS4834.0550	550	1100	70	50	150	-
DDTS4834.0600	600	1200	65	50	175	-
DDTS4834.0650	650	1300	60	50	200	-
DDTS4834.0700	700	1400	55	50	225	-
DDTS4834.0750	750	1500	50	50	250	-
DDTS4834.0800	800	1600	45	50	275	-
DDTS4834.0850	850	1700	40	50	300	-
DDTS4834.0900	900	1800	35	50	325	-
DDTS4834.0950	950	1900	30	50	350	-
DDTS4834.1000	1000	2000	20	50	375	-



We recommend use the major axis.
 Do not dismantle the slide !
 The maximum safe load is given for a fully extended pair of slides, mounted on the major axis with a load spread uniformly along the inner beam. Flat mounted slide load capacities are reduced between 60-80%

Material:All steel parts.

Beams:Cold drawn carbon steel C45E+C, - EN 10277, milled raceways.

Ball cages:Zinc plated sheet steel.

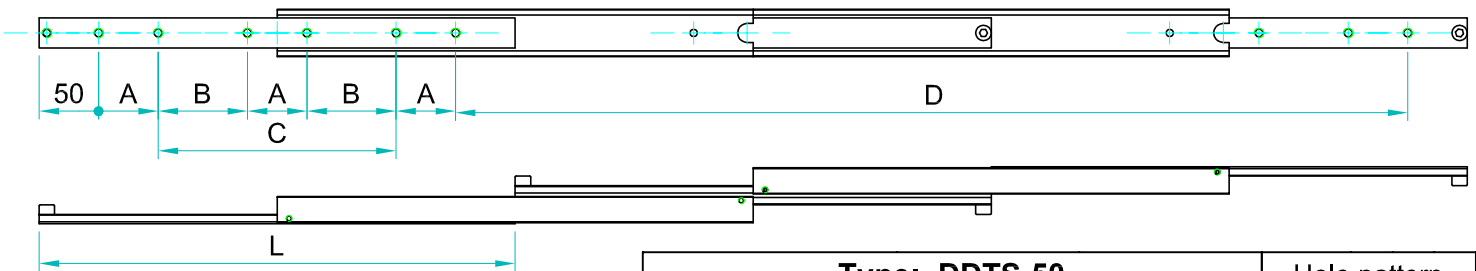
Ball bearings:Chromed C85,G100: DIN 5401.

End Bolts: ASTM A307.

Steel surface protection:Electrolytic alkaline Zinc coating 8-12 microns testet in salt chamber 900 hours without white rast.

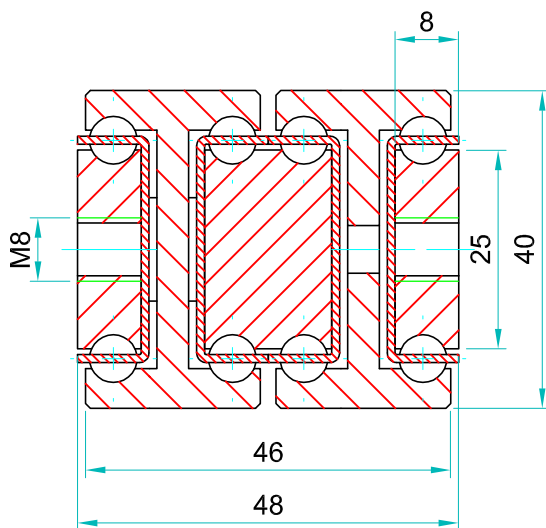
Maximum temperature:We recommend -40 to +200°C with low/high-temp lubrication and free movement to allow for steel expansion.

Note: The slide opening and the hole pattern, can be customized according customer's requirements.



Options:

- "V" - V shape channel raceways
- "F" - one outer beam countersunk
- "FF" - both outer beams countersunk
- "SB" - stainless steel ball bearings
- "SC" - stainless steel ball cages
- "SA" - stainless steel stopping pins and bolts



We recommend use the major axis.
Do not dismantle the slide !
The maximum safe load is given for a fully extended pair of slides, mounted on the major axis with a load spread uniformly along the inner beam. Flat mounted slide load capacities are reduced between 60-80%

Type: DDTS-50				Hole pattern		
Article number	Instalacion lenght: L	Extension lenght: D	Load per pair : kg	"A"	"B"	"C"
DDTS5060.0200	200	400	190	50	-	-
DDTS5060.0250	250	500	195	50	-	50
DDTS5060.0300	300	600	200	50	-	100
DDTS5060.0350	350	700	210	50	-	150
DDTS5060.0400	400	800	220	50	-	200
DDTS5060.0450	450	900	225	50	-	250
DDTS5060.0500	500	1000	230	50	-	300
DDTS5060.0550	550	1100	235	50	150	-
DDTS5060.0600	600	1200	240	50	175	-
DDTS5060.0650	650	1300	232	50	200	-
DDTS5060.0700	700	1400	225	50	225	-
DDTS5060.0750	750	1500	218	50	250	-
DDTS5060.0800	800	1600	210	50	275	-
DDTS5060.0850	850	1700	195	50	300	-
DDTS5060.0900	900	1800	182	50	325	-
DDTS5060.0950	950	1900	172	50	350	-
DDTS5060.1000	1000	2000	160	50	375	-
DDTS5060.1050	1050	2100	155	50	400	-
DDTS5060.1100	1100	2200	150	50	425	-
DDTS5060.1150	1150	2300	145	50	450	-
DDTS5060.1200	1200	2400	140	50	475	-
DDTS5060.1250	1250	2500	135	50	500	-
DDTS5060.1300	1300	2600	130	50	525	-
DDTS5060.1350	1350	2700	125	50	550	-
DDTS5060.1400	1400	2800	120	50	575	-
DDTS5060.1450	1450	2900	115	50	600	-
DDTS5060.1500	1500	3000	110	50	625	-
DDTS5060.1550	1550	3100	105	50	650	-
DDTS5060.1600	1600	3200	100	50	675	-

Material:All steel parts.

Beams:Cold drawn carbon steel C45E+C, - EN 10277, milled raceways.

Ball cages:Zinc plated sheet steel.

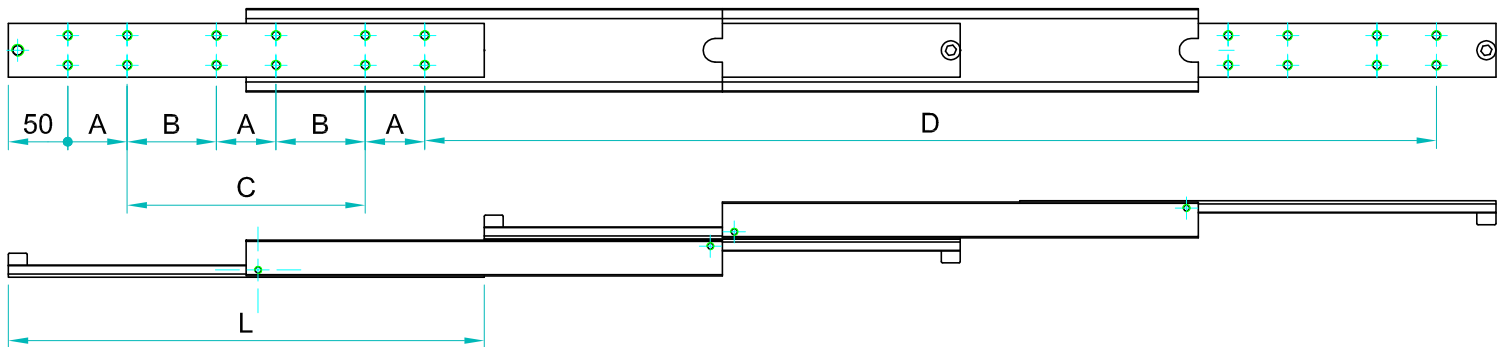
Ball bearings:Chromed C85,G100: DIN 5401.

End Bolts: ASTM A307.

Steel surface protection:Electrolytic alkaline Zinc coating 8-12 microns testet in salt chamber 900 hours without white rast.

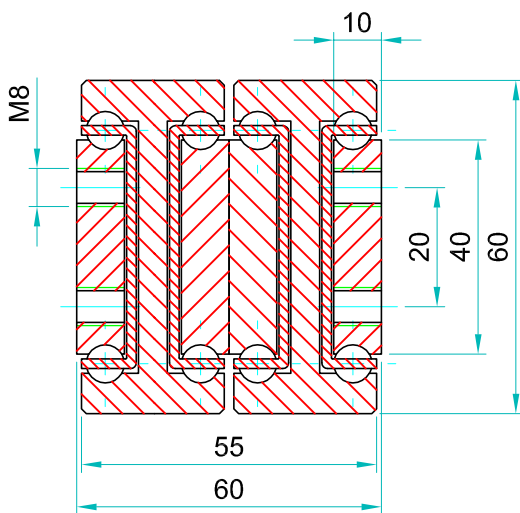
Maximum temperature:We recommend -40 to +200°C with low/high-temp lubrication and free movement to allow for steel expansion.

Note: The slide opening and the hole pattern, can be customized according customer's requirements.



Options:

- "V" - V shape channel raceways
- "F" - one outer beam countersunk
- "FF" - both outer beams countersunk
- "SB" - stainless steel ball bearings
- "SC" - stainless steel ball cages
- "SA" - stainless steel stopping pins and bolts



We recommend use the major axis.
Do not dismantle the slide!
The maximum safe load is given for a fully extended pair of slides, mounted on the major axis with a load spread uniformly along the inner beam
Flat mounted slide load capacities are reduced between 60-80%

Type: DDTS-60				Hole pattern		
Article number	Instalacion lenght :L	Extension lenght:D	Load per pair : kg	"A"	"B"	"C"
DDTS6060.0300	300	600	290	50	-	100
DDTS6060.0350	350	700	295	50	-	150
DDTS6060.0400	400	800	300	50	-	200
DDTS6060.0450	450	900	305	50	-	250
DDTS6060.0500	500	1000	310	50	-	300
DDTS6060.0550	550	1100	315	50	-	350
DDTS6060.0600	600	1200	320	50	-	400
DDTS6060.0650	650	1300	317	50	200	-
DDTS6060.0700	700	1400	315	50	225	-
DDTS6060.0750	750	1500	313	50	250	-
DDTS6060.0800	800	1600	310	50	275	-
DDTS6060.0850	850	1700	308	50	300	-
DDTS6060.0900	900	1800	306	50	325	-
DDTS6060.0950	950	1900	304	50	350	-
DDTS6060.1000	1000	2000	300	50	375	-
DDTS6060.1050	1050	2100	290	50	400	-
DDTS6060.1100	1100	2200	280	50	425	-
DDTS6060.1150	1150	2300	270	50	450	-
DDTS6060.1200	1200	2400	260	50	475	-
DDTS6060.1250	1250	2500	250	50	500	-
DDTS6060.1300	1300	2600	240	50	525	-
DDTS6060.1350	1350	2700	230	50	550	-
DDTS6060.1400	1400	2800	220	50	575	-
DDTS6060.1450	1450	2900	210	50	600	-
DDTS6060.1500	1500	3000	200	50	625	-
DDTS6060.1550	1550	3100	190	50	650	-
DDTS6060.1600	1600	3200	180	50	675	-
DDTS6060.1650	1650	3300	170	50	700	-
DDTS6060.1700	1700	3400	160	100	650	-
DDTS6060.1750	1750	3500	150	100	675	-
DDTS6060.1800	1800	3600	140	100	700	-
DDTS6060.1850	1850	3700	130	100	725	-
DDTS6060.1900	1900	3800	110	100	750	-
DDTS6060.1950	1950	3900	100	100	775	-
DDTS6060.2000	2000	4000	90	100	800	-

Material:All steel parts.

Beams:Cold drawn carbon steel C45E+C, - EN 10277, milled raceways.

Ball cages:Zinc plated sheet steel.

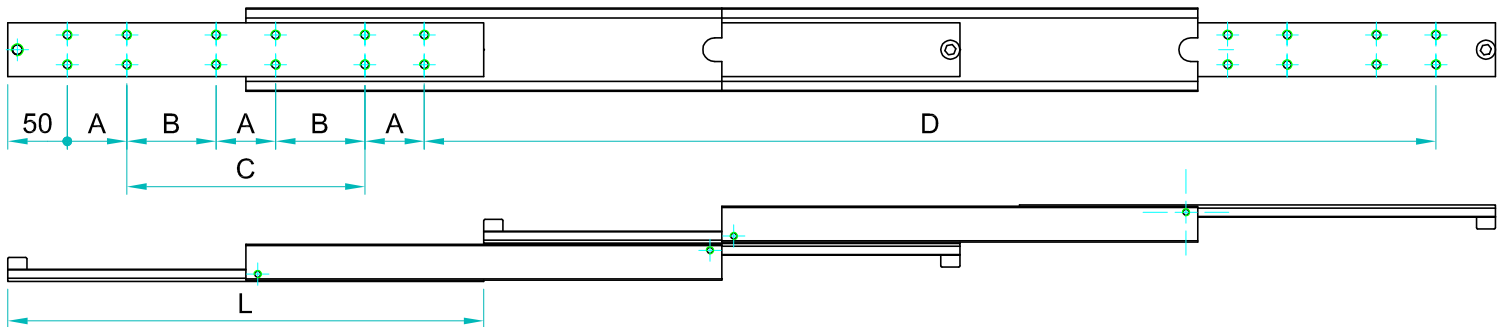
Ball bearings:Chromed C85,G100: DIN 5401.

End Bolts: ASTM A307.

Steel surface protection:Electrolytic alkaline Zinc coating 8-12 microns testet in salt chamber 900 hours without white rast.

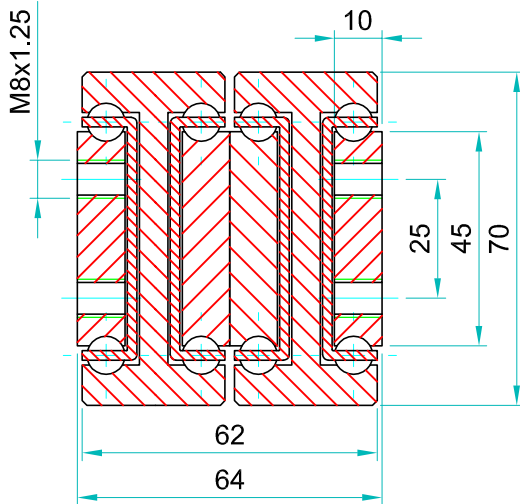
Maximum temperature:We recommend -40 to +200°C with low/high-temp lubrication and free movement to allow for steel expansion.

Note: The slide opening and the hole pattern, can be customized according customer's requirements.



Options:

- "V" - V shape channel raceways
- "F" - one outer beam countersunk
- "FF" - both outer beams countersunk
- "SB" - stainless steel ball bearings
- "SC" - stainless steel ball cages
- "SA" - stainless steel stopping pins and bolts



We recommend use the major axis.
Do not dismantle the slide!
The maximum safe load is given for a fully extended pair of slides, mounted on the major axis with a load spread uniformly along the inner beam
Flat mounted slide load capacities are reduced between 60-80%

Type: DDTS-70				Hole pattern		
Article number	Instalacion lenght :L	Extension lenght:D	Load per pair: kg	"A"	"B"	"C"
DDTS7064.0300	300	600	350	50	-	100
DDTS7064.0350	350	700	355	50	-	150
DDTS7064.0400	400	800	360	50	-	200
DDTS7064.0450	450	900	365	50	-	250
DDTS7064.0500	500	1000	370	50	-	300
DDTS7064.0550	550	1100	380	50	-	350
DDTS7064.0600	600	1200	385	50	-	400
DDTS7064.0650	650	1300	395	50	200	-
DDTS7064.0700	700	1400	400	50	225	-
DDTS7064.0750	750	1500	405	50	250	-
DDTS7064.0800	800	1600	410	50	275	-
DDTS7064.0850	850	1700	400	50	300	-
DDTS7064.0900	900	1800	390	50	325	-
DDTS7064.0950	950	1900	380	50	350	-
DDTS7064.1000	1000	2000	360	50	375	-
DDTS7064.1050	1050	2100	350	50	400	-
DDTS7064.1100	1100	2200	340	50	425	-
DDTS7064.1150	1150	2300	330	50	450	-
DDTS7064.1200	1200	2400	320	50	475	-
DDTS7064.1250	1250	2500	320	50	500	-
DDTS7064.1300	1300	2600	306	50	525	-
DDTS7064.1350	1350	2700	287	50	550	-
DDTS7064.1400	1400	2800	269	50	575	-
DDTS7064.1450	1450	2900	250	50	600	-
DDTS7064.1500	1500	3000	240	50	625	-
DDTS7064.1550	1550	3100	230	50	650	-
DDTS7064.1600	1600	3200	220	50	675	-
DDTS7064.1650	1650	3300	210	50	700	-
DDTS7064.1700	1700	3400	200	100	650	-
DDTS7064.1750	1750	3500	180	100	675	-
DDTS7064.1800	1800	3600	160	100	700	-
DDTS7064.1850	1850	3700	150	100	725	-
DDTS7064.1900	1900	3800	140	100	750	-
DDTS7064.1950	1950	3900	130	100	775	-
DDTS7064.2000	2000	4000	120	100	800	-

Material:All steel parts.

Beams:Cold drawn carbon steel C45E+C, - EN 10277, milled raceways.

Ball cages:Zinc plated sheet steel.

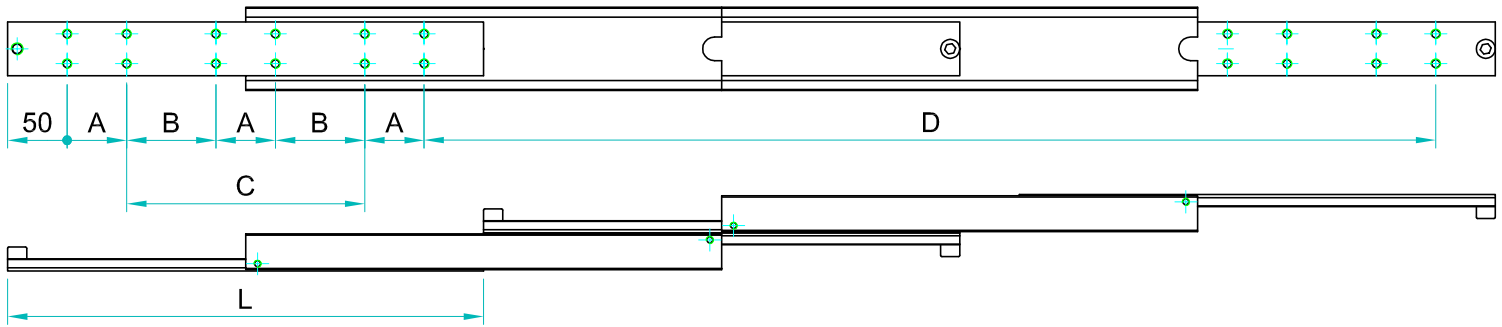
Ball bearings:Chromed C85,G100: DIN 5401.

End Bolts: ASTM A307.

Steel surface protection:Electrolytic alkaline Zinc coating 8-12 microns testet in salt chamber 900 hours without white rast.

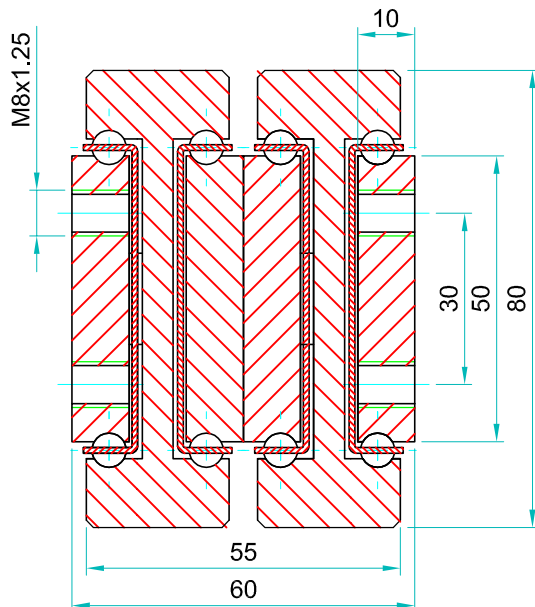
Maximum temperature:We recommend -40 to +200°C with low/high-temp lubrication and free movement to allow for steel expansion.

Note: The slide opening and the hole pattern, can be customized according customer's requirements.



Options:

- "V" - V shape channel raceways
- "F" - one outer beam countersunk
- "FF"- both outer beams countersunk
- "SB"- stainless steel ball bearings
- "SC"- stainless steel ball cages
- "SA"- stainless steel stopping pins and bolts



We recommend use the major axis.
Do not dismantle the slide !
The maximum safe load is given for a fully extended pair of slides, mounted on the major axis with a load spread uniformly along the inner beam
Flat mounted slide load capacities are reduced between 60-80%

Type: DDTs-80				Hole pattern		
Article number	Instalacion lenght :L	Extension lenght:D	Load per pair: kg	"A"	"B"	"C"
DDTS8060.0300	300	600	420	50	-	100
DDTS8060.0350	350	700	430	50	-	150
DDTS8060.0400	400	800	440	50	-	200
DDTS8060.0450	450	900	450	50	-	250
DDTS8060.0500	500	1000	460	50	-	300
DDTS8060.0550	550	1100	470	50	-	350
DDTS8060.0600	600	1200	480	50	-	400
DDTS8060.0650	650	1300	490	50	200	-
DDTS8060.0700	700	1400	500	50	225	-
DDTS8060.0750	750	1500	510	50	250	-
DDTS8060.0800	800	1600	500	50	275	-
DDTS8060.0850	850	1700	495	50	300	-
DDTS8060.0900	900	1800	490	50	325	-
DDTS8060.0950	950	1900	475	50	350	-
DDTS8060.1000	1000	2000	460	50	375	-
DDTS8060.1050	1050	2100	440	50	400	-
DDTS8060.1100	1100	2200	420	50	425	-
DDTS8060.1150	1150	2300	400	50	450	-
DDTS8060.1200	1200	2400	380	50	475	-
DDTS8060.1250	1250	2500	360	50	500	-
DDTS8060.1300	1300	2600	340	50	525	-
DDTS8060.1350	1350	2700	320	50	550	-
DDTS8060.1400	1400	2800	300	50	575	-
DDTS8060.1450	1450	2900	280	50	600	-
DDTS8060.1500	1500	3000	260	50	625	-
DDTS8060.1550	1550	3100	250	50	650	-
DDTS8060.1600	1600	3200	240	50	675	-
DDTS8060.1650	1650	3300	230	50	700	-
DDTS8060.1700	1700	3400	220	100	650	-
DDTS8060.1750	1750	3500	200	100	675	-
DDTS8060.1800	1800	3600	180	100	700	-
DDTS8060.1850	1850	3700	170	100	725	-
DDTS8060.1900	1900	3800	160	100	750	-
DDTS8060.1950	1950	3900	150	100	775	-
DDTS8060.2000	2000	4000	140	100	800	-

Material:All steel parts.

Beams:Cold drawn carbon steel C45E+C, - EN 10277, milled raceways.

Ball cages:Zinc plated sheet steel.

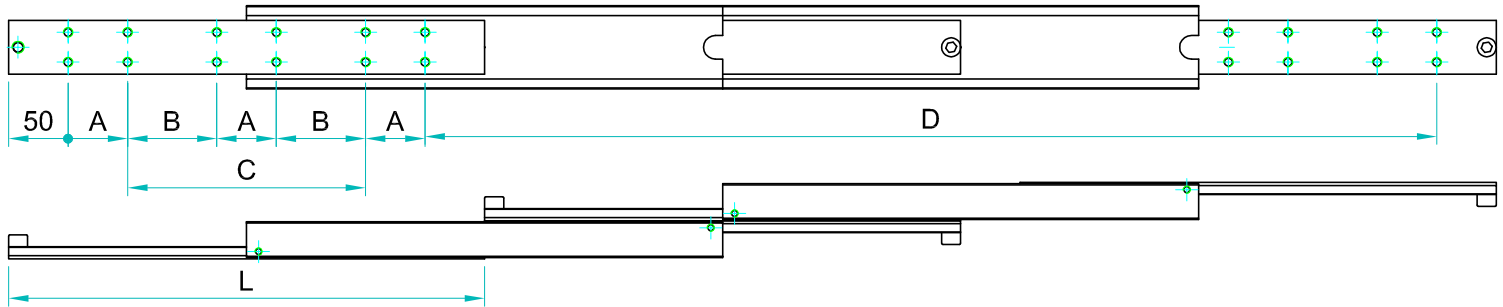
Ball bearings:Chromed C85,G100: DIN 5401.

End Bolts: ASTM A307.

Steel surface protection:Electrolytic alkaline Zinc coating 8-12 microns testet in salt chamber 900 hours without white rast.

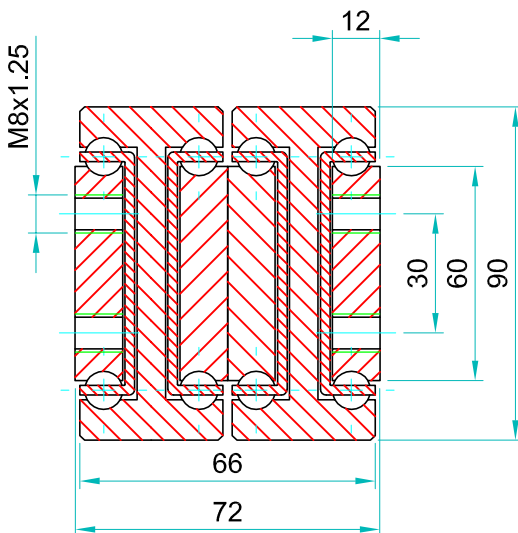
Maximum temperature:We recommend -40 to +200°C with low/high-temp lubrication and free movement to allow for steel expansion.

Note: The slide opening and the hole pattern, can be customized according customer's requirements.



Options:

- "V" - V shape channel raceways
- "F" - one outer beam countersunk
- "FF"- both outer beams countersunk
- "SB"- stainless steel ball bearings
- "SC"- stainless steel ball cages
- "SA"- stainless steel stopping pins and bolts



We recommend use the major axis.
Do not dismantle the slide !
The maximum safe load is given for a fully extended pair of slides, mounted on the major axis with a load spread uniformly along the inner beam
Flat mounted slide load capacities are reduced between 60-80%

Type: DDTS-90				Hole pattern		
Article number	Instalacion lenght :L	Extension lenght:D	Load per pair : kg	"A"	"B"	"C"
DDTS9072.0300	300	600	460	50	-	100
DDTS9072.0350	350	700	480	50	-	150
DDTS9072.0400	400	800	510	50	-	200
DDTS9072.0450	450	900	530	50	-	250
DDTS9072.0500	500	1000	550	50	-	300
DDTS9072.0550	550	1100	575	50	-	350
DDTS9072.0600	600	1200	600	50	-	400
DDTS9072.0650	650	1300	610	50	200	-
DDTS9072.0700	700	1400	620	50	225	-
DDTS9072.0750	750	1500	625	50	250	-
DDTS9072.0800	800	1600	630	50	275	-
DDTS9072.0850	850	1700	625	50	300	-
DDTS9072.0900	900	1800	620	50	325	-
DDTS9072.0950	950	1900	615	50	350	-
DDTS9072.1000	1000	2000	610	50	375	-
DDTS9072.1050	1050	2100	585	50	400	-
DDTS9072.1100	1100	2200	570	50	425	-
DDTS9072.1150	1150	2300	555	50	450	-
DDTS9072.1200	1200	2400	535	50	475	-
DDTS9072.1250	1250	2500	520	50	500	-
DDTS9072.1300	1300	2600	500	50	525	-
DDTS9072.1350	1350	2700	480	50	550	-
DDTS9072.1400	1400	2800	460	50	575	-
DDTS9072.1450	1450	2900	440	50	600	-
DDTS9072.1500	1500	3000	420	50	625	-
DDTS9072.1550	1550	3100	405	50	650	-
DDTS9072.1600	1600	3200	390	50	675	-
DDTS9072.1650	1650	3300	380	50	700	-
DDTS9072.1700	1700	3400	360	100	650	-
DDTS9072.1750	1750	3500	330	100	675	-
DDTS9072.1800	1800	3600	300	100	700	-
DDTS9072.1850	1850	3700	280	100	725	-
DDTS9072.1900	1900	3800	260	100	750	-
DDTS7064.1950	1950	3900	240	100	775	-
DDTS7064.2000	2000	4000	220	100	800	-

Material:All steel parts.

Beams:Cold drawn carbon steel C45E+C, - EN 10277, milled raceways.

Ball cages:Zinc plated sheet steel.

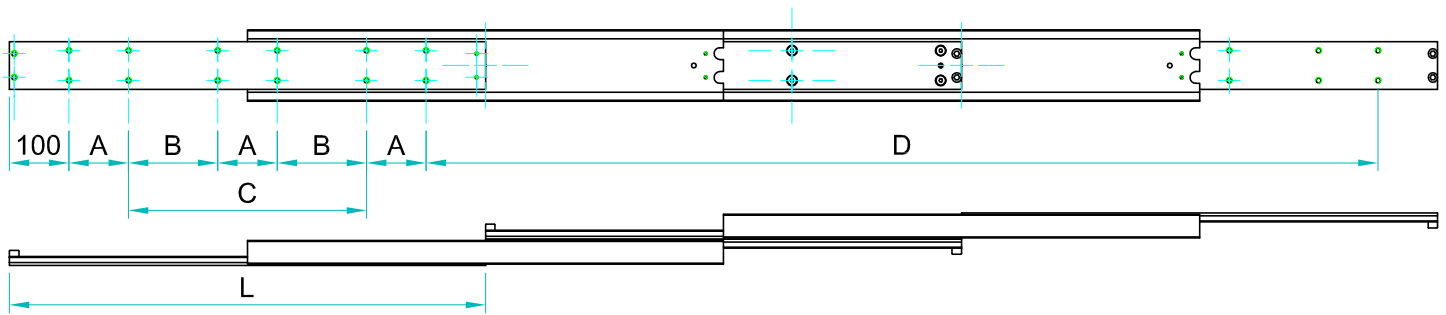
Ball bearings:Chromed C85,G100: DIN 5401.

End Bolts: ASTM A307.

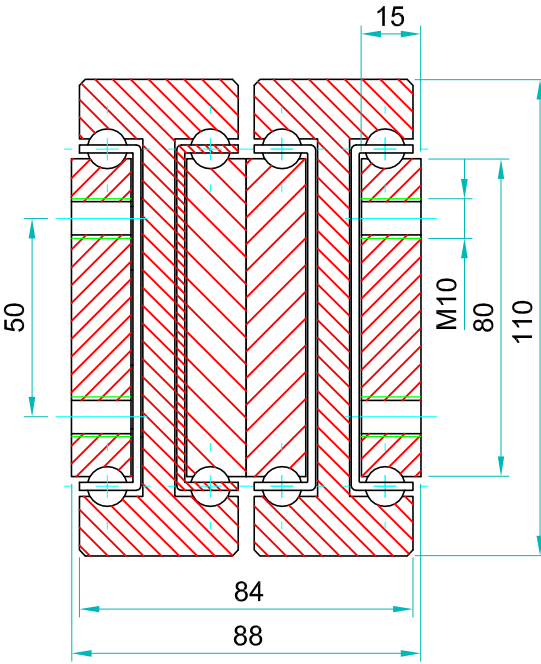
Steel surface protection:Electrolytic alkaline Zinc coating 8-12 microns testet in salt chamber 900 hours without white rast.

Maximum temperature:We recommend -40 to +200°C with low/high-temp lubrication and free movement to allow for steel expansion.

Note: The slide opening and the hole pattern, can be customized according customer's requirements.



- Options:**
 "V" - V shape channel raceways
 "F" - one outer beam countersunk
 "FF" - both outer beams countersunk
 "SB" - stainless steel ball bearings
 "SC" - stainless steel ball cages
 "SA" - stainless steel stopping pins and bolts

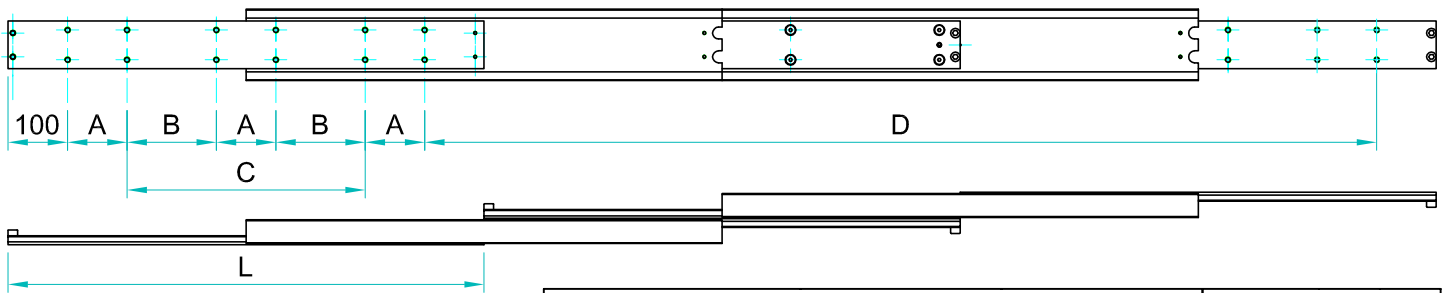


We recommend use the major axis.
 Do not dismantle the slide !
 The maximum safe load is given for a fully extended pair of slides, mounted on the major axis with a load spread uniformly along the inner beam. Flat mounted slide load capacities are reduced between 60-80%

Type: DDTS-110				Hole pattern		
Article number	Instalacion lenght :L	Extension lenght:D	Load per pair:kg	"A"	"B"	"C"
DDTS11088.0300	300	600	600	100	-	-
DDTS110880350	350	700	640	50	-	50
DDTS11088.0400	400	800	670	50	-	100
DDTS11088.0450	450	900	700	50	-	150
DDTS11088.0500	500	1000	740	50	-	200
DDTS11088.0550	550	1100	770	50	-	250
DDTS11088.0600	600	1200	790	50	-	300
DDTS11088.0650	650	1300	810	50	200	-
DDTS11088.0700	700	1400	820	50	225	-
DDTS110880750	750	1500	840	50	250	-
DDTS11088.0800	800	1600	830	100	275	-
DDTS11088.0850	850	1700	800	100	300	-
DDTS11088.0900	900	1800	780	100	325	-
DDTS11088.0950	950	1900	760	100	350	-
DDTS11088.1000	1000	2000	740	100	375	-
DDTS110881050	1050	2100	720	100	400	-
DDTS11088.1100	1100	2200	700	100	425	-
DDTS11088.1150	1150	2300	680	100	450	-
DDTS11088.1200	1200	2400	660	100	475	-
DDTS11088.1250	1250	2500	640	100	500	-
DDTS11088.1300	1300	2600	630	100	525	-
DDTS11088.1350	1350	2700	620	100	550	-
DDTS11088.1400	1400	2800	600	100	575	-
DDTS11088.1450	1450	2900	590	100	600	-
DDTS11088.1500	1500	3000	580	100	625	-
DDTS11088.1550	1550	3100	560	100	650	-
DDTS11088.1600	1600	3200	540	100	675	-
DDTS11088.1650	1650	3300	520	100	700	-
DDTS110881700	1700	3400	500	100	650	-
DDTS11088.1750	1750	3500	480	100	675	-
DDTS11088.1800	1800	3600	460	100	700	-
DDTS11088.1850	1850	3700	440	100	725	-
DDTS11088.1900	1900	3800	420	100	750	-
DDTS11088.1950	1950	3900	400	100	785	-
DDTS11088.2000	2000	4000	370	100	800	-
DDTS11088.2100	2100	4200	290	100	850	-
DDTS11088.2200	2200	4400	200	100	900	-

Material:All steel parts.
Beams:Cold drawn carbon steel C45E+C, - EN 10277, milled raceways.
Ball cages:Zinc plated sheet steel.
Ball bearings:Chromed C85,G100: DIN 5401.
End Bolts: ASTM A307.
Steel surface protection:Electrolytic alkaline Zinc coating 8-12 microns testet in salt chamber 900 hours without white rast.
Maximum temperature:We recommend -40 to +200°C with low/high-temp lubrication and free movement to allow for steel expansion.

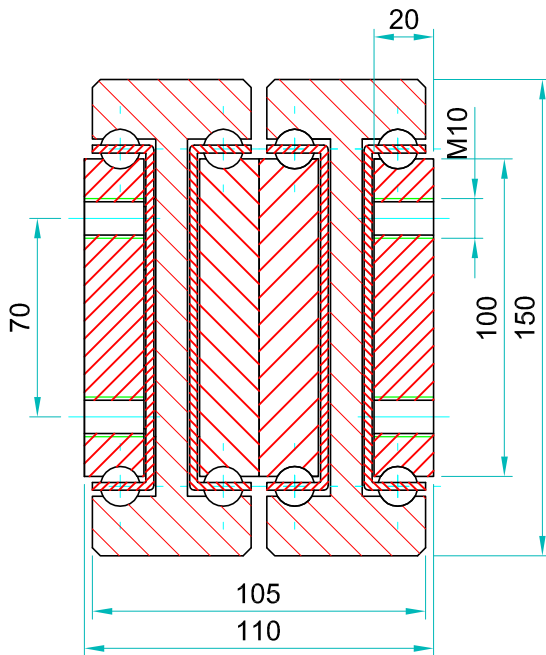




Note: The slide opening and the hole pattern, can be customized according customer's requirements.

Options:

- "V" - V shape channel raceways
- "F" - one outer beam countersunk
- "FF"- both outer beams countersunk
- "SB"- stainless steel ball bearings
- "SC"- stainless steel ball cages
- "SA"- stainless steel stopping pins and bolts



We recommend use the major axis.
Do not dismantle the slide !
The maximum safe load is given for a fully extended pair of slides, mounted on the major axis with a load spread uniformly along the inner beam. Flat mounted slide load capacities are reduced between 60-80%

Type:DDTS-150				Hole pattern		
Article number	Instalacion lenght :L	Extension lenght:D	Load per pair : kg	"A"	"B"	"C"
DDTS150110.0300	300	600	1120	100	-	-
DDTS150110.0350	350	700	1170	50	-	50
DDTS150110.0400	400	800	1220	50	-	100
DDTS150110.0450	450	900	1280	50	-	150
DDTS150110.0500	500	1000	1330	50	-	200
DDTS150110.0550	550	1100	1380	50	-	250
DDTS150110.0600	600	1200	1440	50	-	300
DDTS150110.0650	650	1300	1460	50	150	-
DDTS150110.0700	700	1400	1490	50	175	-
DDTS150110.0750	750	1500	1510	50	200	-
DDTS150110.0800	800	1600	1540	100	150	-
DDTS150110.0850	850	1700	1520	100	175	-
DDTS150110.0900	900	1800	1500	100	200	-
DDTS150110.0950	950	1900	1480	100	225	-
DDTS150110.1000	1000	2000	1460	100	250	-
DDTS150110.1050	1050	2100	1440	100	275	-
DDTS150110.1100	1100	2200	1410	100	300	-
DDTS150110.1150	1150	2300	1390	100	325	-
DDTS150110.1200	1200	2400	1350	100	350	-
DDTS150110.1250	1250	2500	1330	100	375	-
DDTS150110.1300	1300	2600	1300	100	400	-
DDTS150110.1350	1350	2700	1275	100	425	-
DDTS150110.1400	1400	2800	1250	100	450	-
DDTS150110.1450	1450	2900	1225	100	475	-
DDTS150110.1500	1500	3000	1200	100	500	-
DDTS150110.1550	1550	3100	1180	100	525	-
DDTS150110.1600	1600	3200	1160	100	550	-
DDTS150110.1650	1650	3300	1130	100	575	-
DDTS150110.1700	1700	3400	1100	100	600	-
DDTS150110.1750	1750	3500	1060	100	625	-
DDTS150110.1800	1800	3600	1000	100	650	-
DDTS150110.1850	1850	3700	940	100	675	-
DDTS150110.1900	1900	3800	880	100	700	-
DDTS150110.1950	1950	3900	820	100	725	-
DDTS150110.2000	2000	4000	760	100	750	-
DDTS150110.2050	2050	4100	700	100	775	-
DDTS150110.2100	2100	4200	640	100	800	-
DDTS150110.2150	2150	4300	580	100	825	-
DDTS150110.2200	2200	4400	520	100	850	-
DDTS150110.2250	2250	4500	460	100	875	-
DDTS150110.2300	2300	4600	400	100	900	-
DDTS150110.2350	2350	4700	340	100	925	-
DDTS150110.2400	2400	4800	280	100	950	-
DDTS150110.2450	2450	4900	220	100	975	-
DDTS150110.2500	2500	5000	160	100	1000	-

Material:All steel parts.

Beams:Cold drawn carbon steel C45E+C, - EN 10277, milled raceways.

Ball cages:Zinc plated sheet steel.

Ball bearings:Chromed C85,G100: DIN 5401.

End Bolts: ASTM A307.

Steel surface protection:Electrolytic alkaline Zinc coating 8-12 microns testet in salt chamber 900 hours without white rast.

Maximum temperature:We recommend -40 to +200°C with low/high-temp lubrication and free movement to allow for steel expansion.