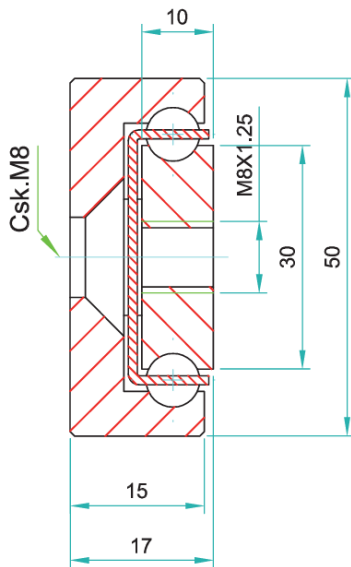


Options:

- "V" - V shape channel raceways
- "F" - one outer beam countersunk



| SOWST-5017 weights 5.5 kg/m | | | | Hole pattern | | |
|-----------------------------|------------------------|---------------------|-------------------|--------------|-----|-----|
| Article number | Installation length: L | Extension length: D | Load per pair: kg | "A" | "B" | "C" |
| SOWST5017.0200 | 200 | 100 | 330 | 50 | - | - |
| SOWST5017.0250 | 250 | 125 | 340 | 50 | - | 50 |
| SOWST5017.0300 | 300 | 150 | 350 | 50 | - | 100 |
| SOWST5017.0350 | 350 | 175 | 360 | 50 | - | 150 |
| SOWST5017.0400 | 400 | 200 | 370 | 50 | - | 200 |
| SOWST5017.0450 | 450 | 225 | 380 | 50 | - | 250 |
| SOWST5017.0500 | 500 | 250 | 390 | 50 | - | 300 |
| SOWST5017.0550 | 550 | 275 | 400 | 50 | 150 | - |
| SOWST5017.0600 | 600 | 300 | 380 | 50 | 175 | - |
| SOWST5017.0650 | 650 | 325 | 360 | 50 | 200 | - |
| SOWST5017.0700 | 700 | 350 | 340 | 50 | 225 | - |
| SOWST5017.0750 | 750 | 375 | 320 | 50 | 250 | - |
| SOWST5017.0800 | 800 | 400 | 310 | 50 | 275 | - |
| SOWST5017.0850 | 850 | 425 | 300 | 50 | 300 | - |
| SOWST5017.0900 | 900 | 450 | 290 | 50 | 325 | - |
| SOWST5017.0950 | 950 | 475 | 280 | 50 | 350 | - |
| SOWST5017.1000 | 1000 | 500 | 270 | 50 | 375 | - |
| SOWST5017.1050 | 1050 | 525 | 260 | 50 | 400 | - |
| SOWST5017.1100 | 1100 | 550 | 250 | 50 | 425 | - |
| SOWST5017.1150 | 1150 | 575 | 240 | 50 | 450 | - |
| SOWST5017.1200 | 1200 | 600 | 230 | 50 | 475 | - |

**Do not dismantle the slide!**

The maximum safe working load is stated for fully extended pair of slides, mounted upright. Use all fixing holes and spread the load evenly across the inner beam.
 Flat mounting: Reduce the load by 60-80%.
 We recommend the use of strong L brackets for under or floor mount.
 Deflection is calculated up to 1% of the closed length, at or near full load capacity.

Installation tolerance:

Closed length Tolerance: DIN2768 – c

Extension Tolerance: DIN2768 - c

Installation width tolerance + 0.4 to – 0.6mm

| SOWST-5017 weights 5.5 kg/m | | | | Hole pattern | | |
|-----------------------------|------------------------|---------------------|-------------------|--------------|-----|-----|
| Article number | Installation length: L | Extension length: D | Load per pair: kg | “A” | “B” | “C” |
| SOWST5017.1250 | 1250 | 625 | 215 | 50 | 500 | - |
| SOWST5017.1300 | 1300 | 650 | 200 | 50 | 525 | - |
| SOWST5017.1350 | 1350 | 675 | 190 | 50 | 550 | - |
| SOWST5017.1400 | 1400 | 700 | 180 | 50 | 575 | - |
| SOWST5017.1450 | 1450 | 725 | 170 | 50 | 600 | - |
| SOWST5017.1500 | 1500 | 750 | 160 | 50 | 625 | - |
| SOWST5017.1550 | 1550 | 775 | 150 | 50 | 650 | - |
| SOWST5017.1600 | 1600 | 800 | 140 | 50 | 675 | - |
| SOWST5017.1650 | 1650 | 825 | 130 | 50 | 700 | - |
| SOWST5017.1700 | 1700 | 850 | 120 | 100 | 650 | - |
| SOWST5017.1750 | 1750 | 875 | 110 | 100 | 675 | - |
| SOWST5017.1800 | 1800 | 900 | 100 | 100 | 700 | - |
| SOWST5017.1850 | 1850 | 925 | 90 | 100 | 725 | - |
| SOWST5017.1900 | 1900 | 950 | 80 | 100 | 750 | - |
| SOWST5017.1950 | 1950 | 975 | 70 | 100 | 775 | - |
| SOWST5017.2000 | 2000 | 1000 | 60 | 100 | 800 | - |

Indirect Axis (Flat) Mounting: As in the image above, reduce the load capacity by 60-80% and allow for increased deflection, or contact our engineers to request accurate FEA load analysis for OEM projects. We load rate per fully extended pair of slides on the direct axis, upright, with uniform loading across the beams, spaced 1,000mm apart. If load capacities need to be increased, or slides are fitted to extra-wide drawers, please contact us for technical advice.

Material: All austenitic stainless-steel parts

Beams: Stainless 316L (1.4404) precision milled

Ball cages: Stainless 316L (1.4404)

Ball bearings: Stainless 316L (1.4404)

End Bolts: Stainless A2 304 (1.4301)

Steel surface protection: Polished

Temperature range: Cryogenic to ≈800° C with suitable lubrication & material yield strength reduction

Lubrication: We apply and recommend lithium based EP3 grease for general applications. High & low temp grease upon request

